

DRAWING NO.  
SD082518-01

| REV | DATE                  | DESCRIPTION     | ECO   | BY | C'H'K. |
|-----|-----------------------|-----------------|-------|----|--------|
| A   | 10/3/2007 12:00:00 AM | REWORK IN PROG. | 15066 | AP | PL     |

| COMMERCIAL COPPER CABLE RANGE                        | METRIC COPPER CABLE RANGE  | CATALOG NUMBER | FIG. NO. | C            | D            | H             | L             | T            | Y            | INSTALLATION DATA<br>DIE SET CAT. NO. AND<br>(NUMBER OF CRIMPS) |           |          | DIE INDEX AND EMBOSMENT |
|--|--|----------------|----------|--------------|--------------|---------------|---------------|--------------|--------------|---|-----------|----------|-------------------------|
|  |  |                |          |              |              |               |               |              |              | Y750/Y35/Y39  | Y45       | Y46      |                         |
| #2 STR (.292 DIA)<br>THRU<br>250 kcmil (.575 DIA)    | 35mm <sup>2</sup> (7.6mm DIA)<br>THRU<br>120mm <sup>2</sup> (14.4mm DIA)   | YGF29-2N       | 1        | 2.00<br>[51] | 3.25<br>[83] | 3.62<br>[92]  | 5.78<br>[147] | 1.31<br>[33] | 2.00<br>[51] | U997 (1)  | U997 (1)  | U997 (1) | 997                     |
|  |  | YGF29-4N       | 2        | 3.25<br>[83] |              |               |               |              |              |   |           |          |                         |
| 250 kcmil (.575 DIA)<br>THRU<br>500 kcmil (.813 DIA) | 120mm <sup>2</sup> (14.4mm DIA)<br>THRU<br>240mm <sup>2</sup> (20.4mm DIA) | YGF34-2N       | 1        | 2.00<br>[51] | 3.75<br>[95] | 4.62<br>[117] | 5.40<br>[137] | 2.19<br>[56] | U1011 (3)    | S1011 (2)   | P1011 (2) | 1011     |                         |
|  |  | YGF34-4N       | 2        | 3.75<br>[95] |              |               |               |              |              |   |           |          |                         |

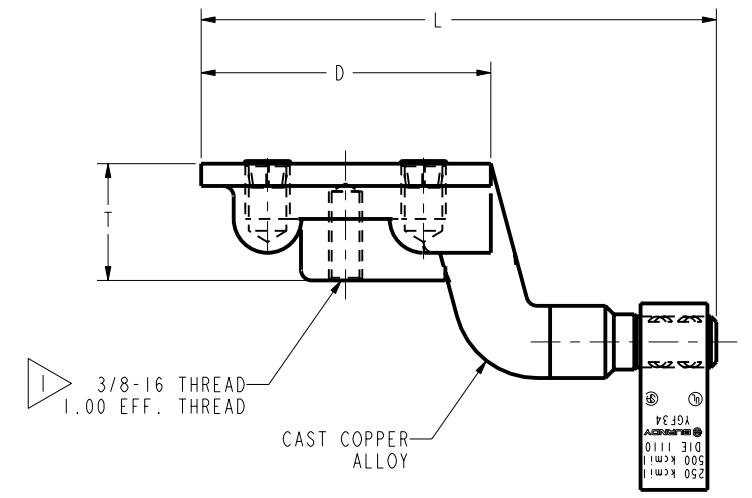
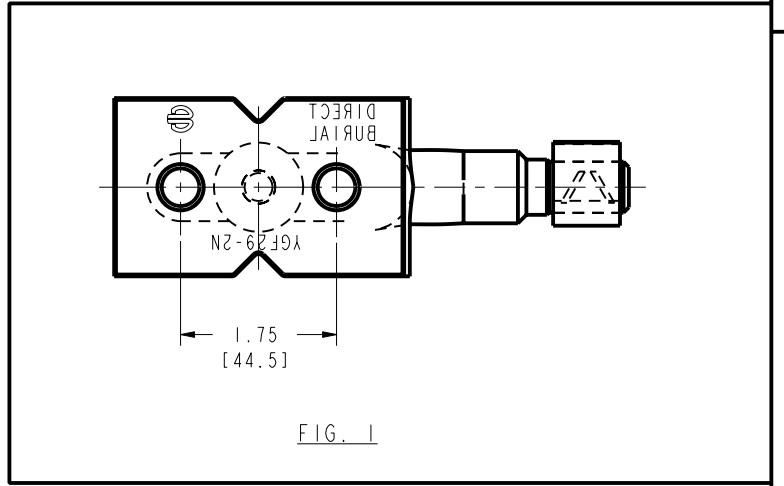
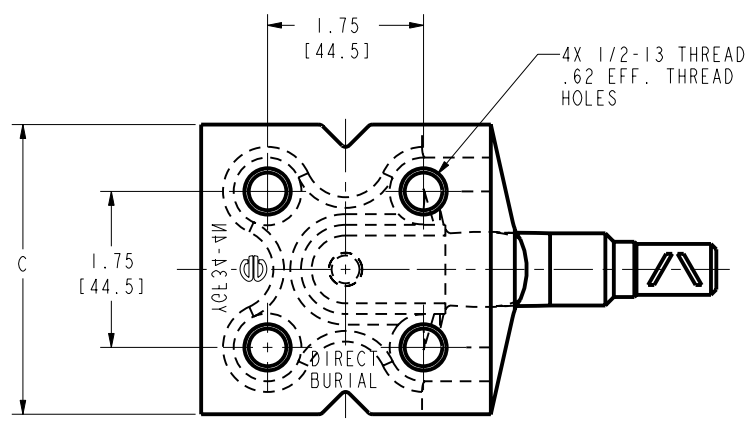
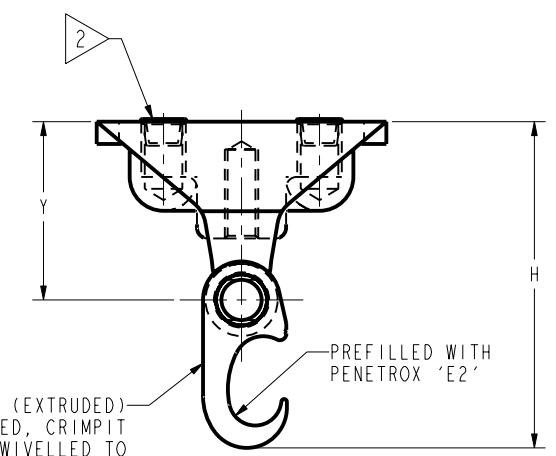


FIG. 2



COPPER CRIMPIT (EXTRUDED) UNTIL CRIMPED, CRIMPIT MAY BE SWIVELLED TO ANY DESIRED POSITION

NOTES:

- 1 THIS TAPPED HOLE MAY BE USED TO POSITION THE GROUNDING PLATE ON A THREADED ROD PRIOR TO POURING OF THE CONCRETE. 3/8-16 THREAD WITH 1.00 EFF. THREAD IS STANDARD. IF OTHER THREAD IS REQUIRED, ADD APPROPRIATE CODE NO. TO CATALOG NO. FOR DESIRED THREAD:  
-50 (1/2-13, .94 EFF. THREAD)  
-62 (5/8-11, .94 EFF. THREAD)  
-75 (3/4-10, .81 EFF. THREAD)  
EXAMPLE: YGF-34N-50 IS YGF34-4N WITH 1/2-13 THREAD.
- 2 PLASTIC PLUGS ARE PROVIDED TO KEEP DIRT & CONCRETE OUT OF THE THREADED HOLES UNTIL THE ATTACHMENT OF GROUNDING TERMINALS.
- 3 SUITABLE FOR DIRECT BURIAL IN EARTH OR CONCRETE.
- 4 LOCATE FIRST CRIMP AT CENTER OF CONNECTOR AND MAKE SECOND CRIMP TO EITHER SIDE OF FIRST CRIMP.
- 5 WHERE A "U" DIE OR "PU" DIE IS RECOMMENDED WITH THE Y45 HYPRESS, A PT6515 ADAPTOR MUST BE USED
- 6 WHERE A "U" DIE OR "PU" DIE IS RECOMMENDED WITH THE Y46 HYPRESS, A P-UADP ADAPTOR MUST BE USED
- 7 THESE CONNECTORS CAN ONLY BE INSTALLED USING THE Y750, Y45 OR Y46 HYPRESS WITH RECOMMENDED DIES. THESE CONNECTORS CAN NOT BE INSTALLED WITH THE Y35 OR Y39 HYPRESS.
- 8 DIMENSIONS IN BRACKETS [ ] ARE IN MILLIMETERS.

|   |              |              |     |
|---|--------------|--------------|-----|
| TO ORDER BURNDY PRODUCTS CALL 1-800-346-4175<br>MANCHESTER, NH 03109, USA<br>FOR PRODUCT INFO = <a href="http://www.fciconnect.com">http://www.fciconnect.com</a> |              |              |     |
| GROUNDING PLATE   |              |              |     |
| ITEM NO:  | N/A          |              |     |
| CAT. NO:  | SEE TABLE    |              |     |
| DRAWN BY:   | J. H. BENNET | 12/13/78     |     |
| CHECKER:  | ORR          | 02/02/79     |     |
| DSN APPVL:  | ESR          | 02/02/79     |     |
| MFG APPVL:  | --           | --           |     |
| QA APPVL:   | --           | --           |     |
| MKT APPVL:  | --           | --           |     |
| PROD FAM:   | --           | DRAWING NO   | REV |
| PROJECT #:  | --           | SD082518-01  | A   |
| DOCUMENT TYPE:  | Sales        | SIZE         | D   |
| REL LEVEL:  | Released     | SHEET 1 OF 1 |     |

REV: PE0200