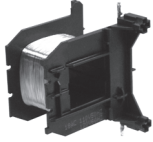


Renewal Parts

XTCERENC_



Replacement Coil—Frame C

| Voltage | Coil Suffix | Catalog Number |
|---------------|-------------|----------------|
| 110/50 120/60 | A | XTCERENCOILCA |
| 110–130 Vdc | AD | XTCERENCOILCAD |
| 220/50 240/60 | B | XTCERENCOILCB |
| 200–240 Vdc | BD | XTCERENCOILCBD |
| 415/50 480/60 | C | XTCERENCOILCC |
| 600/60 | D | XTCERENCOILCD |
| 208/60 | E | XTCERENCOILCE |
| 230/50 | F | XTCERENCOILCF |
| 190/50 220/60 | G | XTCERENCOILCG |
| 240/50 277/60 | H | XTCERENCOILCH |
| 380/50 440/60 | L | XTCERENCOILCL |
| 400/50 | N | XTCERENCOILCN |
| 380/60 | P | XTCERENCOILCP |
| 12/50 12/60 | R | XTCERENCOILCR |
| 12–14 Vdc | RD | XTCERENCOILCRD |
| 24/50 24/60 | T | XTCERENCOILCT |
| 24–27 Vdc | TD | XTCERENCOILCTD |
| 42/50 48/60 | W | XTCERENCOILCW |
| 48–60 Vdc | WD | XTCERENCOILCWD |
| 48/50 | Y | XTCERENCOILCY |

Replacement Coil—Frame D

| Voltage | Coil Suffix | Catalog Number |
|---------------|-------------|----------------|
| 110/50 120/60 | A | XTCERENCOILDA |
| 110–130 Vdc | AD | XTCERENCOILDAD |
| 220/50 240/60 | B | XTCERENCOILDB |
| 200–240 Vdc | BD | XTCERENCOILDBD |
| 415/50 480/60 | C | XTCERENCOILDC |
| 600/60 | D | XTCERENCOILDD |
| 208/60 | E | XTCERENCOILDE |
| 230/50 | F | XTCERENCOILDF |
| 190/50 220/60 | G | XTCERENCOILDG |
| 240/50 277/60 | H | XTCERENCOILDH |
| 380/50 440/60 | L | XTCERENCOILDL |
| 400/50 | N | XTCERENCOILDN |
| 380/60 | P | XTCERENCOILD P |
| 12/50 12/60 | R | XTCERENCOILDR |
| 12–14 Vdc | RD | XTCERENCOILDRD |
| 24/50 24/60 | T | XTCERENCOILDT |
| 24–27 Vdc | TD | XTCERENCOILDTD |
| 42/50 48/60 | W | XTCERENCOILDW |
| 48–60 Vdc | WD | XTCERENCOILDWD |
| 48/50 | Y | XTCERENCOILDY |

Replacement Coil—Frame F ①

| Voltage | Coil Suffix | Catalog Number |
|---------------|-------------|----------------|
| 110/50 120/60 | A | XTCERENCOILFA |
| 110–130 Vdc | AD | XTCERENCOILFAD |
| 220/50 240/60 | B | XTCERENCOILFB |
| 200–240 Vdc | BD | XTCERENCOILFBD |
| 415/50 480/60 | C | XTCERENCOILFC |
| 600/60 | D | XTCERENCOILFD |
| 208/60 | E | XTCERENCOILFE |
| 230/50 | F | XTCERENCOILFF |
| 190/50 220/60 | G | XTCERENCOILFG |
| 240/50 277/60 | H | XTCERENCOILFH |
| 380/50 440/60 | L | XTCERENCOILFL |
| 400/50 | N | XTCERENCOILFN |
| 380/60 | P | XTCERENCOILFP |
| 12/50 12/60 | R | XTCERENCOILFR |
| 24/50 24/60 | T | XTCERENCOILFT |
| 24–27 Vdc | TD | XTCERENCOILFTD |
| 42/50 48/60 | W | XTCERENCOILFW |
| 48–60 Vdc | WD | XTCERENCOILFWD |
| 48/50 | Y | XTCERENCOILFY |

Replacement Coil—Frame G ②

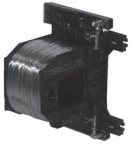
| Voltage | Coil Suffix | Catalog Number |
|----------------|-------------|----------------|
| 100–120V 50/60 | A | XTCERENCOILGA |
| 110–130 Vdc | AD | XTCERENCOILGAD |
| 190–240V 50/60 | B | XTCERENCOILGB |
| 200–240 Vdc | BD | XTCERENCOILGBD |
| 480–500V 50/60 | C | XTCERENCOILGC |
| 380–440V 50/60 | L | XTCERENCOILGL |
| 4/50 24/60 | T | XTCERENCOILGT |
| 24–27 Vdc | TD | XTCERENCOILGTD |
| 42–48V 50/60 | W | XTCERENCOILGW |
| 48–60 Vdc | WD | XTCERENCOILGWD |

Notes

- ① Frame F replacement coils can only be used with contactors having the following date codes: DC coils, 2706 or later; AC coils, 4706 or later.
- ② Frame G replacement coils can only be used with contactors having date codes of 2706 or later.

Renewal Parts

XTCERENC_



Replacement Coil—Frame C

| Voltage | Coil Suffix | Catalog Number |
|---------------|-------------|----------------|
| 110/50 120/60 | A | XTCERENCOILCA |
| 110–130 Vdc | AD | XTCERENCOILCAD |
| 220/50 240/60 | B | XTCERENCOILCB |
| 200–240 Vdc | BD | XTCERENCOILCBD |
| 415/50 480/60 | C | XTCERENCOILCC |
| 600/60 | D | XTCERENCOILCD |
| 208/60 | E | XTCERENCOILCE |
| 230/50 | F | XTCERENCOILCF |
| 190/50 220/60 | G | XTCERENCOILCG |
| 240/50 277/60 | H | XTCERENCOILCH |
| 380/50 440/60 | L | XTCERENCOILCL |
| 400/50 | N | XTCERENCOILCN |
| 380/60 | P | XTCERENCOILCP |
| 12/50 12/60 | R | XTCERENCOILCR |
| 12–14 Vdc | RD | XTCERENCOILCRD |
| 24/50 24/60 | T | XTCERENCOILCT |
| 24–27 Vdc | TD | XTCERENCOILCTD |
| 42/50 48/60 | W | XTCERENCOILCW |
| 48–60 Vdc | WD | XTCERENCOILCWD |
| 48/50 | Y | XTCERENCOILCY |

Replacement Coil—Frame D

| Voltage | Coil Suffix | Catalog Number |
|---------------|-------------|----------------|
| 110/50 120/60 | A | XTCERENCOILDA |
| 110–130 Vdc | AD | XTCERENCOILDAD |
| 220/50 240/60 | B | XTCERENCOILDB |
| 200–240 Vdc | BD | XTCERENCOILDBD |
| 415/50 480/60 | C | XTCERENCOILDC |
| 600/60 | D | XTCERENCOILDD |
| 208/60 | E | XTCERENCOILDE |
| 230/50 | F | XTCERENCOILDF |
| 190/50 220/60 | G | XTCERENCOILDG |
| 240/50 277/60 | H | XTCERENCOILDH |
| 380/50 440/60 | L | XTCERENCOILDL |
| 400/50 | N | XTCERENCOILDN |
| 380/60 | P | XTCERENCOILD P |
| 12/50 12/60 | R | XTCERENCOILDR |
| 12–14 Vdc | RD | XTCERENCOILDRD |
| 24/50 24/60 | T | XTCERENCOILDT |
| 24–27 Vdc | TD | XTCERENCOILDTD |
| 42/50 48/60 | W | XTCERENCOILDW |
| 48–60 Vdc | WD | XTCERENCOILDWD |
| 48/50 | Y | XTCERENCOILDY |

Replacement Coil—Frame F ①

| Voltage | Coil Suffix | Catalog Number |
|---------------|-------------|----------------|
| 110/50 120/60 | A | XTCERENCOILFA |
| 110–130 Vdc | AD | XTCERENCOILFAD |
| 220/50 240/60 | B | XTCERENCOILFB |
| 200–240 Vdc | BD | XTCERENCOILFBD |
| 415/50 480/60 | C | XTCERENCOILFC |
| 600/60 | D | XTCERENCOILFD |
| 208/60 | E | XTCERENCOILFE |
| 230/50 | F | XTCERENCOILFF |
| 190/50 220/60 | G | XTCERENCOILFG |
| 240/50 277/60 | H | XTCERENCOILFH |
| 380/50 440/60 | L | XTCERENCOILFL |
| 400/50 | N | XTCERENCOILFN |
| 380/60 | P | XTCERENCOILFP |
| 12/50 12/60 | R | XTCERENCOILFR |
| 24/50 24/60 | T | XTCERENCOILFT |
| 24–27 Vdc | TD | XTCERENCOILFTD |
| 42/50 48/60 | W | XTCERENCOILFW |
| 48–60 Vdc | WD | XTCERENCOILFWD |
| 48/50 | Y | XTCERENCOILFY |

Replacement Coil—Frame G ②

| Voltage | Coil Suffix | Catalog Number |
|----------------|-------------|----------------|
| 100–120V 50/60 | A | XTCERENCOILGA |
| 110–130 Vdc | AD | XTCERENCOILGAD |
| 190–240V 50/60 | B | XTCERENCOILGB |
| 200–240 Vdc | BD | XTCERENCOILGBD |
| 480–500V 50/60 | C | XTCERENCOILGC |
| 380–440V 50/60 | L | XTCERENCOILGL |
| 4/50 24/60 | T | XTCERENCOILGT |
| 24–27 Vdc | TD | XTCERENCOILGTD |
| 42–48V 50/60 | W | XTCERENCOILGW |
| 48–60 Vdc | WD | XTCERENCOILGWD |

Notes

- ① Frame F replacement coils can only be used with contactors having the following date codes: DC coils, 2706 or later; AC coils, 4706 or later.
- ② Frame G replacement coils can only be used with contactors having date codes of 2706 or later.