



CW Lighting
Houston, TX 77040
713.690.9320

Date: Apr 22, 2024

CW LIGHTING, LLC
7701 West Little York Rd, Suite 300
HOUSTON TX 77040
Phone: (713) 690-9320
Fax: (713) 690-4805

Job Name
Elliott - Stock Luminaires - WP100-SCT
CWL24-100713

Bid Date
Apr 22, 2024

Submittal Date
Apr 22, 2024

Distributor:
ELLIOTT - HOUSTON
7929 N Sam Houston Pkwy W
Houston TX 77064



CW Lighting
Houston, TX 77040
713.690.9320

Transmittal

CW LIGHTING, LLC
7701 West Little York Rd, Suite 300
HOUSTON TX 77040
Phone: (713) 690-9320
From: **MARILYN HITCHCOCK**

Project Elliott - Stock Luminaires - WP100-SCT
Quote# CWL24-100713

Location
To ELLIOTT ELECTRIC
7929 N Sam Houston Pkwy W
SUITE 200
Houston TX 77064
Contact:

ATTACHED WE ARE SENDING YOU 1 COPY OF THE FOLLOWING ITEM:

- | | | |
|-----------------------------------|--|--------|
| <input type="checkbox"/> Drawings | <input type="checkbox"/> Specifications | Other: |
| <input type="checkbox"/> Prints | <input type="checkbox"/> Information | |
| <input type="checkbox"/> Plans | <input checked="" type="checkbox"/> Submittals | |

THESE ARE TRANSMITTED FOR:

- | | | |
|--|---|---------------------------------|
| <input type="checkbox"/> Prior Approval | <input type="checkbox"/> Resubmittal for Approval | <input type="checkbox"/> Record |
| <input type="checkbox"/> Approval | <input type="checkbox"/> Corrections | Bids due on: |
| <input type="checkbox"/> Approval as Submitted | <input checked="" type="checkbox"/> Your Use | Other: |
| <input type="checkbox"/> Approval as Noted | <input type="checkbox"/> Review and Comment | |

Type	MFG	Part
	SIGNIFY - STONCO	WP100-SCT-G2-10-BZ



CW Lighting
Houston, TX 77040
713.690.9320

Job Name:

Elliott - Stock Luminaires - WP100-SCT
Distributor: ELLIOTT - HOUSTON (Houston)

Catalog Number:

WP100-SCT-G2-10-BZ

Notes:

Type:

CWL24-100713



Wall Mount

Wall Pack dual select

60W and 100W



Stonco LED Wall Pack dual select family features energy saving LED technology ideal for wall mounted applications. The Wall pack dual select is available in two sizes to accommodate multiple mounting heights.

Project: _____

Location: _____

Cat.No: _____

Type: _____

Lamps: _____ Qty: _____

Notes: _____

Ordering guide

Example: WP60-SCT-G2-10-BZ

Luminaire	Wattage	Generation	Voltage	Finish
WP	100	SCT-G2	10	BZ
WP Wall Pack	60 28W/40W/60W 100 70W/80W/90W/100W	SCT-G2 CCT Selectable 30K/40K/50K, 80CRI, Integrated Daylight Sensor, Generation 2	10 120-347V	BZ Bronze WH White

Specifications

Housing

Die-cast aluminum housing and lens frame with heat and impact resistant borosilicate glass lens.

IP Rating

LED light engine is weather proof sealed in a luminaire rated IP65.

Electrical

Driver efficiency (>84% at full load). Available in 120-347V.

LED Board and Array

1 or 2 Chip on Board (Mid-power) LEDs. Selectable Color temperature 3000K, 4000K, 5000K. Minimum CRI of 70.

Mounting

Mounts to standard 3-1/2" to 4" round and octagonal or 4 inch square electrical junction boxes. 1/2 NPT threaded conduit access.

Energy Saving Benefits

System efficacy 123lm/W @ 3000K - 128lm/W @ 5000K

Daylight Sensor

	Photocell	Luminaire
Set 1	Disable	On
Set 2 (Default)	Ambient light <10lux, Ambient light >30lux	On Off
Set 3	Ambient light <25lux, Ambient light >50lux	On Off
Set 4	Ambient light <50lux, Ambient light >80lux	On Off

Listings

UL/cUL listed to the UL 1598 standard, suitable for Wet Locations. Suitable for use in ambient from -40° to 40°C (-40° to 104°F).

Product is DesignLights Consortium® qualified.

Finish

Each luminaire receives a powdercoat finish. Can chose between Bronze (BZ) and White (WH) finish.

Limited Warranty

Luminaires are all covered by a 5-year limited warranty. See signify.com/warranties for details.



**Job Name:**

Elliott - Stock Luminaires - WP100-SCT
Distributor: ELLIOTT - HOUSTON (Houston)

Catalog Number:

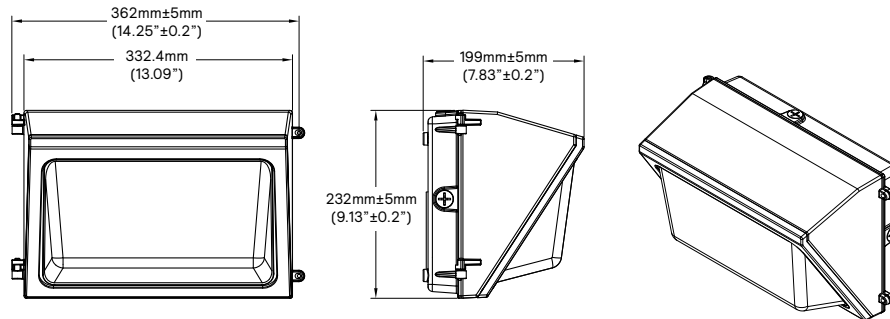
WP100-SCT-G2-10-BZ

Notes:**Type:**

CWL24-100713

WP Wall Pack dual select LED

60W and 100W

Dimensions**Weight**

Product	Weight
WP60W	9.2lbs (4.2kg)
WP100W	10.14lbs (4.6kg)

LED Wattage and Lumen Values

Ordering Codes	Total LEDs	System Current (mA)	Color Temp. (K)	Average System Wattage ¹	Lumen Output ^{1,2}	Efficacy (LPW)	Weight (kg)
WP60-SCT-G2-10-BZ	280	230 @ 120V	3000/4000/5000	28	3860/4060/3920	138/145/140	3.7
		330 @ 120V	3000/4000/5000	40	5280/5720/5360	132/143/134	
		500 @ 120V	3000/4000/5000	60	7380/8160/7680	123/136/128	
WP100-SCT-G2-10-BZ	560	583 @ 120V	3000/4000/5000	70	9240/10080/9800	132/144/140	3.9
		667 @ 120V	3000/4000/5000	80	10240/11360/10960	128/142/137	
		750 @ 120V	3000/4000/5000	90	11250/12330/11970	125/137/133	
		835 @ 120V	3000/4000/5000	100	12300/13600/12800	123/136/128	

1. Wattage and lumen output may vary by due to LED manufacturer forward volt specification and ambient temperature. Wattage shown is average for 120V input. Measured wattage may vary due to variation in input voltage.

2. Lumen values based on photometric tests performed in compliance with IESNA LM-79.

NOTE: Contact outdoorlighting.applications@philips.com for details or additional information.

Predicted Lumen Depreciation Data

Predicted performance derived from LED manufacturer's data and engineering design estimates, based on IESNA LM-80 methodology. Actual experience may vary due to field application conditions. L70 is the predicted time when LED performance depreciates to 70% of initial lumen output.

Calculated per IESNA TM21-11. Published L70 hours limited to 6 times actual LED test hours.

Ordering Codes	Ambient Temperature °C	LED Current mA	Driver output current mA	L ₇₀ per TM21 ^{2,3}	Lumen Maintenance @ 60,000 hrs
WP60-SCT-G2-10-BZ	25 °C	43	1300	>54,000 hrs	89.9%
WP100-SCT-G2-10-BZ	25 °C	39	2000	>54,000 hrs	88.7%

1. Predicted performance derived from LED manufacturer's data and engineering design estimates.

2. based on IESNA LM-80 methodology. Actual experience may vary due to field application conditions.

L70 is the predicted time when LED performance depreciates to 70% of initial lumen output.

3. Calculated per IESNA TM 21-11. Published L70 hours limited to 6 times actual LED test hours.



© 2023 Signify Holding. All rights reserved. The information provided herein is subject to change, without notice. Signify does not give any representation or warranty as to the accuracy or completeness of the information included herein and shall not be liable for any action in reliance thereon. The information presented in this document is not intended as any commercial offer and does not form part of any quotation or contract, unless otherwise agreed by Signify.

Signify North America Corporation
400 Crossing Blvd, Suite 600
Bridgewater, NJ 08807
Telephone: 800-555-0050

Signify Canada Ltd.
281 Hillmount Road,
Markham, ON, Canada L6C 2S3
Telephone: 800-668-9008

All trademarks are owned by Signify Holding or their respective owners.



CW Lighting
Houston, TX 77040
713.690.9320

Job Name:

Elliott - Stock Luminaires - WP100-SCT
Distributor: ELLIOTT - HOUSTON (Houston)

Catalog Number:

WP100-SCT-G2-10-BZ

Type:

CWL24-100713

Stonco KEENE

by Signify

Wall Pack

WP60-SCT-G2-10-BZ
WP100-SCT-G2-10-BZ

LED Lighting Fixture

GENERAL SAFETY INFORMATION

To avoid hazards and unnecessary failures due to misuse, please read carefully all warnings and instructions included in the MI sheets and all labels.

- Before installing, servicing, or performing routine maintenance upon this equipment, pay attention to: Supply voltage input 120-347V, frequency 50/60 Hz.
- This fixture is intended to be connected to a properly installed and grounded UL listed junction box.
- Commercial installation, service and maintenance of luminaires should be performed by a qualified licensed electrician.
- Residential installation, always consult a qualified licensed electrician and check your local electrical code if any uncertainty before operating.
- Always check the product before installation.
- DO NOT INSTALL DAMAGED PRODUCT!

**⚠ WARNING: RISK OF ELECTRICAL SHOCK**

- Always turn off the power before you perform installation and maintenance.
- Verify that supply voltage is correct for the specified voltage range of the luminaire shown on the label, i.e. 120-347V.
- Make all electrical and grounded connections in accordance with the National Electrical Code and any applicable local code requirements.
- All wiring connections must be capped with UL approved devices for this purpose.

⚠ CAUTION: RISK OF INJURY

- Wear gloves and safety goggles at all times when removing luminaires from carton, installing, servicing or performing maintenance.
- Avoid direct eye exposure to the illuminated light source.
- Put aside small parts and dispose packing material properly, to prevent hazard to children.

⚠ CAUTION: RISK OF FIRE

- Install and use only as intended according to UL, all applicable codes and regulations and these instructions.

CAUTION: For proper weatherproof function all gaskets must be seated properly and all screws inserted and tightened firmly. apply weatherproof silicone sealant around the edge of the wall box. this is especially important with an uneven wall surface. silicone all plugs and unused conduit entries.

Illustrations in the manual are for installation purpose only. Installation may vary depending on the specific luminaire model.

GENERAL WIRING DIAGRAM

CAUTION: Turn off electrical power by fuse or circuit breaker box before wiring fixture to the power supply.





CW Lighting
Houston, TX 77040
713.690.9320

Job Name:

Elliott - Stock Luminaires - WP100-SCT
Distributor: ELLIOTT - HOUSTON (Houston)

Catalog Number:
WP100-SCT-G2-10-BZ

Notes:

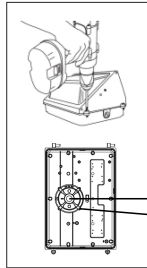
Type:

CWL24-100713

Signify Classified - Internal

Wall Pack

MOUNTING INSTRUCTIONS

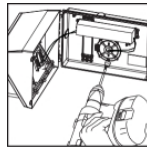


STEP 1

Loosen two captive screws on right side of housing and open the front housing.

Remove the knockout plug on the back housing, drill mounting holes.

knockout plug
mounting holes

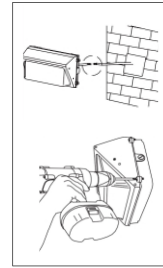


STEP 3

Align with mounting holes on the device, drill holes on the mounting surface.

Secure the fixture onto the mounting surface with fasteners.

Switch CCT, FAO and Photocell per request, refer to labels on the device or following instruction.



STEP 2

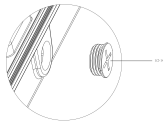
Connected wires as demo.



Note: The fixture adapts multi-voltage (120-347V) automatically.

STEP 4

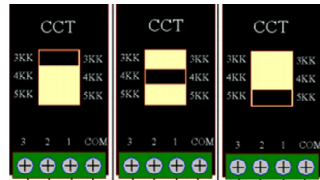
Close the front housing onto the back housing, tighten two side captive screws.



Note: to ensure the protective performance of the product, the 1/2-14nps plug must be assembled with a torque of not less than 1.7N·m.

CCT switching position

For **3000K**, set the switch to 3KK as shown.
For **4000K**, set the switch to 4KK as shown (by default).
For **5000K**, set the switch to 5KK as shown.



FAO switching position

For WP60-SCT-G2-10-BZ

For **60W** (maximum power): all three switches to off as shown (by default).

For **40W**: only Switch 1 to ON as shown.

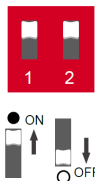
For **28W**: only Switch 2 to ON as shown.

Note: Other position combinations are invalid.



Photocell function

Photocell configured to the device, default setting: ambient brightness is < 10 lux, light on; while ambient brightness is > 30 lux, light off. Other settings refer to following diagrams.



Switch		Lux Setting	
1	2	Lux-On	Lux-Off
○	○	Disable	Disable
●	○	10Lux	30Lux
○	●	25Lux	50Lux
●	●	50Lux	80Lux

For WP100-SCT-G2-10-BZ

For **100W** (maximum power): all three switches to off as shown (by default).

For **90W**: only Switch 1 to ON as shown.

For **80W**: only Switch 2 to ON as shown.

For **70W**: only Switch 3 to ON as shown.

Note: Other position combinations are invalid.





CW Lighting
Houston, TX 77040
713.690.9320

Date: Apr 22, 2024

CW LIGHTING, LLC
7701 West Little York Rd, Suite 300
HOUSTON TX 77040
Phone: (713) 690-9320
Fax: (713) 690-4805

Job Name
Elliott - Stock Luminaires - WP100-SCT
CWL24-100713

Bid Date
Apr 22, 2024

Submittal Date
Apr 22, 2024

Distributor:
ELLIOTT - HOUSTON
7929 N Sam Houston Pkwy W
Houston TX 77064



CW Lighting
Houston, TX 77040
713.690.9320

Transmittal

CW LIGHTING, LLC
7701 West Little York Rd, Suite 300
HOUSTON TX 77040
Phone: (713) 690-9320
From: **MARILYN HITCHCOCK**

Project Elliott - Stock Luminaires - WP100-SCT
Quote# CWL24-100713

Location
To ELLIOTT ELECTRIC
7929 N Sam Houston Pkwy W
SUITE 200
Houston TX 77064
Contact:

ATTACHED WE ARE SENDING YOU 1 COPY OF THE FOLLOWING ITEM:

- | | | |
|-----------------------------------|--|--------|
| <input type="checkbox"/> Drawings | <input type="checkbox"/> Specifications | Other: |
| <input type="checkbox"/> Prints | <input type="checkbox"/> Information | |
| <input type="checkbox"/> Plans | <input checked="" type="checkbox"/> Submittals | |

THESE ARE TRANSMITTED FOR:

- | | | |
|--|---|---------------------------------|
| <input type="checkbox"/> Prior Approval | <input type="checkbox"/> Resubmittal for Approval | <input type="checkbox"/> Record |
| <input type="checkbox"/> Approval | <input type="checkbox"/> Corrections | Bids due on: |
| <input type="checkbox"/> Approval as Submitted | <input checked="" type="checkbox"/> Your Use | Other: |
| <input type="checkbox"/> Approval as Noted | <input type="checkbox"/> Review and Comment | |

Type	MFG	Part
	SIGNIFY - STONCO	WP100-SCT-G2-10-BZ



CW Lighting
Houston, TX 77040
713.690.9320

Job Name:

Elliott - Stock Luminaires - WP100-SCT
Distributor: ELLIOTT - HOUSTON (Houston)

Catalog Number:

WP100-SCT-G2-10-BZ

Notes:

Type:

CWL24-100713



Wall Mount

Wall Pack dual select

60W and 100W



Stonco LED Wall Pack dual select family features energy saving LED technology ideal for wall mounted applications. The Wall pack dual select is available in two sizes to accommodate multiple mounting heights.

Project: _____

Location: _____

Cat.No: _____

Type: _____

Lamps: _____ Qty: _____

Notes: _____

Ordering guide

Example: WP60-SCT-G2-10-BZ

Luminaire	Wattage	Generation	Voltage	Finish
WP	100	SCT-G2	10	BZ
WP Wall Pack	60 28W/40W/60W 100 70W/80W/90W/100W	SCT-G2 CCT Selectable 30K/40K/50K, 80CRI, Integrated Daylight Sensor, Generation 2	10 120-347V	BZ Bronze WH White

Specifications

Housing

Die-cast aluminum housing and lens frame with heat and impact resistant borosilicate glass lens.

IP Rating

LED light engine is weather proof sealed in a luminaire rated IP65.

Electrical

Driver efficiency (>84% at full load). Available in 120-347V.

LED Board and Array

1 or 2 Chip on Board (Mid-power) LEDs. Selectable Color temperature 3000K, 4000K, 5000K. Minimum CRI of 70.

Mounting

Mounts to standard 3-1/2" to 4" round and octagonal or 4 inch square electrical junction boxes. 1/2 NPT threaded conduit access.

Energy Saving Benefits

System efficacy 123lm/W @ 3000K - 128lm/W @ 5000K

Daylight Sensor

	Photocell	Luminaire
Set 1	Disable	On
Set 2 (Default)	Ambient light <10lux, Ambient light >30lux	On Off
Set 3	Ambient light <25lux, Ambient light >50lux	On Off
Set 4	Ambient light <50lux, Ambient light >80lux	On Off

Listings

UL/cUL listed to the UL 1598 standard, suitable for Wet Locations. Suitable for use in ambient from -40° to 40°C (-40° to 104°F).

Product is DesignLights Consortium® qualified.

Finish

Each luminaire receives a powdercoat finish. Can chose between Bronze (BZ) and White (WH) finish.

Limited Warranty

Luminaires are all covered by a 5-year limited warranty. See signify.com/warranties for details.



**Job Name:**

Elliott - Stock Luminaires - WP100-SCT
Distributor: ELLIOTT - HOUSTON (Houston)

Catalog Number:

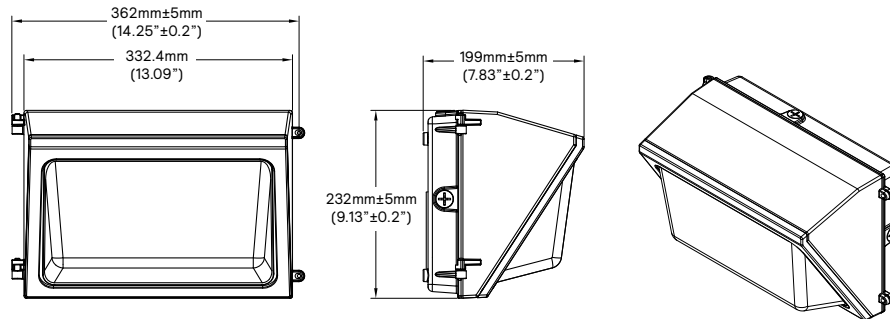
WP100-SCT-G2-10-BZ

Notes:**Type:**

CWL24-100713

WP Wall Pack dual select LED

60W and 100W

Dimensions**Weight**

Product	Weight
WP60W	9.2lbs (4.2kg)
WP100W	10.14lbs (4.6kg)

LED Wattage and Lumen Values

Ordering Codes	Total LEDs	System Current (mA)	Color Temp. (K)	Average System Wattage ¹	Lumen Output ^{1,2}	Efficacy (LPW)	Weight (kg)
WP60-SCT-G2-10-BZ	280	230 @ 120V	3000/4000/5000	28	3860/4060/3920	138/145/140	3.7
		330 @ 120V	3000/4000/5000	40	5280/5720/5360	132/143/134	
		500 @ 120V	3000/4000/5000	60	7380/8160/7680	123/136/128	
WP100-SCT-G2-10-BZ	560	583 @ 120V	3000/4000/5000	70	9240/10080/9800	132/144/140	3.9
		667 @ 120V	3000/4000/5000	80	10240/11360/10960	128/142/137	
		750 @ 120V	3000/4000/5000	90	11250/12330/11970	125/137/133	
		835 @ 120V	3000/4000/5000	100	12300/13600/12800	123/136/128	

1. Wattage and lumen output may vary by due to LED manufacturer forward volt specification and ambient temperature. Wattage shown is average for 120V input. Measured wattage may vary due to variation in input voltage.

2. Lumen values based on photometric tests performed in compliance with IESNA LM-79.

NOTE: Contact outdoorlighting.applications@philips.com for details or additional information.

Predicted Lumen Depreciation Data

Predicted performance derived from LED manufacturer's data and engineering design estimates, based on IESNA LM-80 methodology. Actual experience may vary due to field application conditions. L70 is the predicted time when LED performance depreciates to 70% of initial lumen output.

Calculated per IESNA TM21-11. Published L70 hours limited to 6 times actual LED test hours.

Ordering Codes	Ambient Temperature °C	LED Current mA	Driver output current mA	L ₇₀ per TM21 ^{2,3}	Lumen Maintenance @ 60,000 hrs
WP60-SCT-G2-10-BZ	25 °C	43	1300	>54,000 hrs	89.9%
WP100-SCT-G2-10-BZ	25 °C	39	2000	>54,000 hrs	88.7%

1. Predicted performance derived from LED manufacturer's data and engineering design estimates.

2. based on IESNA LM-80 methodology. Actual experience may vary due to field application conditions.

L70 is the predicted time when LED performance depreciates to 70% of initial lumen output.

3. Calculated per IESNA TM 21-11. Published L70 hours limited to 6 times actual LED test hours.



© 2023 Signify Holding. All rights reserved. The information provided herein is subject to change, without notice. Signify does not give any representation or warranty as to the accuracy or completeness of the information included herein and shall not be liable for any action in reliance thereon. The information presented in this document is not intended as any commercial offer and does not form part of any quotation or contract, unless otherwise agreed by Signify.

Signify North America Corporation
400 Crossing Blvd, Suite 600
Bridgewater, NJ 08807
Telephone: 800-555-0050

Signify Canada Ltd.
281 Hillmount Road,
Markham, ON, Canada L6C 2S3
Telephone: 800-668-9008

All trademarks are owned by Signify Holding or their respective owners.

**Job Name:**Elliott - Stock Luminaires - WP100-SCT
Distributor: ELLIOTT - HOUSTON (Houston)**Catalog Number:**

WP100-SCT-G2-10-BZ

Notes:

Type:

CWL24-100713

Stonco KEENE

by Signify

Wall Pack

WP60-SCT-G2-10-BZ
WP100-SCT-G2-10-BZ**LED Lighting Fixture****GENERAL SAFETY INFORMATION**

To avoid hazards and unnecessary failures due to misuse, please read carefully all warnings and instructions included in the MI sheets and all labels.

- Before installing, servicing, or performing routine maintenance upon this equipment, pay attention to: Supply voltage input 120-347V, frequency 50/60 Hz.
- This fixture is intended to be connected to a properly installed and grounded UL listed junction box.
- Commercial installation, service and maintenance of luminaires should be performed by a qualified licensed electrician.
- Residential installation, always consult a qualified licensed electrician and check your local electrical code if any uncertainty before operating.
- Always check the product before installation.
- DO NOT INSTALL DAMAGED PRODUCT!

**⚠ WARNING: RISK OF ELECTRICAL SHOCK**

- Always turn off the power before you perform installation and maintenance.
- Verify that supply voltage is correct for the specified voltage range of the luminaire shown on the label, i.e. 120-347V.
- Make all electrical and grounded connections in accordance with the National Electrical Code and any applicable local code requirements.
- All wiring connections must be capped with UL approved devices for this purpose.

⚠ CAUTION: RISK OF INJURY

- Wear gloves and safety goggles at all times when removing luminaires from carton, installing, servicing or performing maintenance.
- Avoid direct eye exposure to the illuminated light source.
- Put aside small parts and dispose packing material properly, to prevent hazard to children.

⚠ CAUTION: RISK OF FIRE

- Install and use only as intended according to UL, all applicable codes and regulations and these instructions.

CAUTION: For proper weatherproof function all gaskets must be seated properly and all screws inserted and tightened firmly. apply weatherproof silicone sealant around the edge of the wall box. this is especially important with an uneven wall surface. silicone all plugs and unused conduit entries.

Illustrations in the manual are for installation purpose only. Installation may vary depending on the specific luminaire model.

GENERAL WIRING DIAGRAM

CAUTION: Turn off electrical power by fuse or circuit breaker box before wiring fixture to the power supply.





CW Lighting
Houston, TX 77040
713.690.9320

Job Name:

Elliott - Stock Luminaires - WP100-SCT
Distributor: ELLIOTT - HOUSTON (Houston)

Catalog Number:
WP100-SCT-G2-10-BZ

Notes:

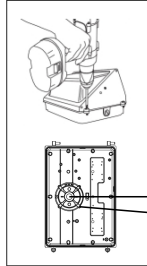
Type:

CWL24-100713

Signify Classified - Internal

Wall Pack

MOUNTING INSTRUCTIONS

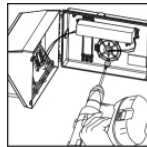


STEP 1

Loosen two captive screws on right side of housing and open the front housing.

Remove the knockout plug on the back housing, drill mounting holes.

knockout plug
mounting holes

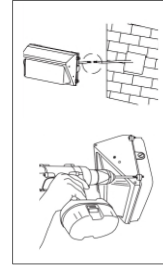


STEP 3

Align with mounting holes on the device, drill holes on the mounting surface.

Secure the fixture onto the mounting surface with fasteners.

Switch CCT, FAO and Photocell per request, refer to labels on the device or following instruction.



STEP 2

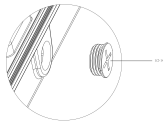
Connected wires as demo.



Note: The fixture adapts multi-voltage (120-347V) automatically.

STEP 4

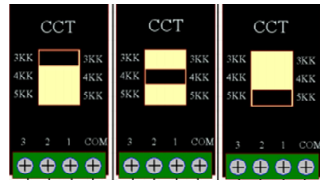
Close the front housing onto the back housing, tighten two side captive screws.



Note: to ensure the protective performance of the product, the 1/2-14nps plug must be assembled with a torque of not less than 1.7N·m.

CCT switching position

For **3000K**, set the switch to 3KK as shown.
For **4000K**, set the switch to 4KK as shown (by default).
For **5000K**, set the switch to 5KK as shown.



FAO switching position

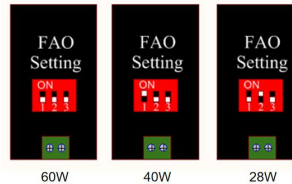
For WP60-SCT-G2-10-BZ

For **60W** (maximum power): all three switches to off as shown (by default).

For **40W**: only Switch 1 to ON as shown.

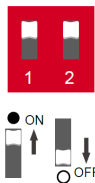
For **28W**: only Switch 2 to ON as shown.

Note: Other position combinations are invalid.



Photocell function

Photocell configured to the device, default setting: ambient brightness is < 10 lux, light on; while ambient brightness is > 30 lux, light off. Other settings refer to following diagrams.



Switch		Lux Setting	
1	2	Lux-On	Lux-Off
○	○	Disable	Disable
●	○	10Lux	30Lux
○	●	25Lux	50Lux
●	●	50Lux	80Lux

For WP100-SCT-G2-10-BZ

For **100W** (maximum power): all three switches to off as shown (by default).

For **90W**: only Switch 1 to ON as shown.

For **80W**: only Switch 2 to ON as shown.

For **70W**: only Switch 3 to ON as shown.

Note: Other position combinations are invalid.

