

Glare Free



WATTS: 86

WLD86LED

CCT: 4500K

CCT: 3000K

LUMENS: 9,173

LUMENS: 8,560

LPW: 107 CRI: 83

LPW: 98 CRI: 81

DIMMING: 10-100%

DIMMING: 10-100%

Design is Protected by U.S. Patent No. 9,482,395



Ordering Information

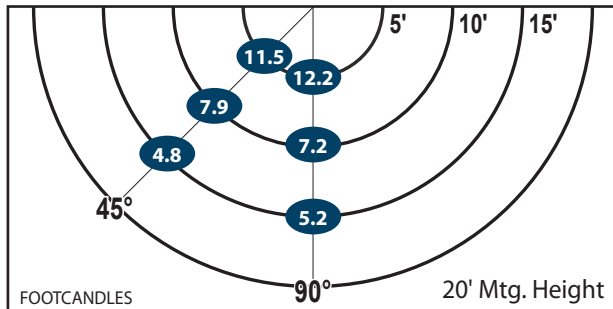
| CATALOG # | DESCRIPTION | VOLTS | COLOR TEMP |
|-------------------|--------------------|---------|------------|
| WLD86LED | 86W LED Wall Light | 120-277 | 4500K |
| WLD86LED3K | 86W LED Wall Light | 120-277 | 3000K |

Options

| ADD SUFFIX # | DESCRIPTION |
|--------------|-----------------------|
| PC | 120V Photocontrol |
| PM | 208-277V Photocontrol |
| EB | Emergency Back-Up |
| 4 | 480V Driver |

Note: Atlas uses only premium LED compatible photocontrols

Recommended Mounting Height - 20-22 ft.



| Mtg. Hgt. | FOOTCANDLES ON THE GROUND | | | | | | Avg. FCs 450 SQ. FT. |
|-----------|---------------------------|-----|-----|------|-----|-----|-------------------------|
| | 90° | | | 45° | | | |
| | 5' | 10' | 15' | 5' | 10' | 15' | |
| 20' | 12.2 | 7.2 | 5.2 | 11.5 | 7.9 | 4.8 | 8.1 |
| 22' | 10.4 | 6.8 | 4.6 | 9.6 | 7.2 | 4.6 | 7.2 |

Performance

- 95% Efficient Reflector Targets the Light
- Eliminates Glare & Offensive Light
- Less Wasted Light
- More Footcandles on the Ground
- Creates a Smooth & Uniform Light Pattern

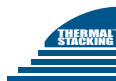
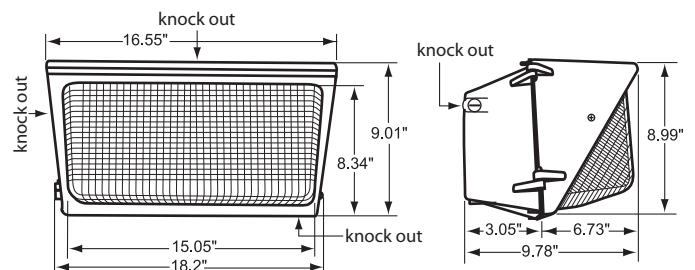
Dimensions and Specifications

Overall Height: 9.01"

Depth: 9.78"

Overall Width: 18.2"

Weight: 15 lbs.



*The majority of Atlas Lighting Products are assembled in USA facilities by an American Workforce utilizing both Domestic and Foreign components



Glare Free



WATTS: 86

WLD86LED

CCT: 4500K

CCT: 3000K

LUMENS: 9,173

LUMENS: 8,560

LPW: 107 CRI: 83

LPW: 98 CRI: 81

DIMMING: 10-100%

DIMMING: 10-100%

Design is Protected by U.S. Patent No. 9,482,395



Ordering Information

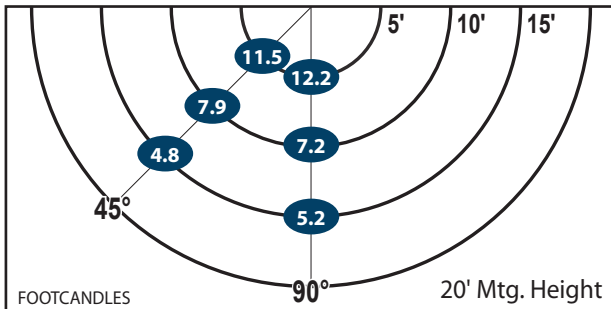
| CATALOG # | DESCRIPTION | VOLTS | COLOR TEMP |
|-------------------|--------------------|---------|------------|
| WLD86LED | 86W LED Wall Light | 120-277 | 4500K |
| WLD86LED3K | 86W LED Wall Light | 120-277 | 3000K |

Options

| ADD SUFFIX # | DESCRIPTION |
|--------------|-----------------------|
| PC | 120V Photocontrol |
| PM | 208-277V Photocontrol |
| EB | Emergency Back-Up |
| 4 | 480V Driver |

Note: Atlas uses only premium LED compatible photocontrols

Recommended Mounting Height - 20-22 ft.



| Mtg. Hgt. | FOOTCANDLES ON THE GROUND | | | | | | Avg. FCs 450 SQ. FT. |
|-----------|---------------------------|-----|-----|------|-----|-----|-------------------------|
| | 90° | | | 45° | | | |
| | 5' | 10' | 15' | 5' | 10' | 15' | |
| 20' | 12.2 | 7.2 | 5.2 | 11.5 | 7.9 | 4.8 | 8.1 |
| 22' | 10.4 | 6.8 | 4.6 | 9.6 | 7.2 | 4.6 | 7.2 |

Performance

- 95% Efficient Reflector Targets the Light
- Eliminates Glare & Offensive Light
- Less Wasted Light
- More Footcandles on the Ground
- Creates a Smooth & Uniform Light Pattern

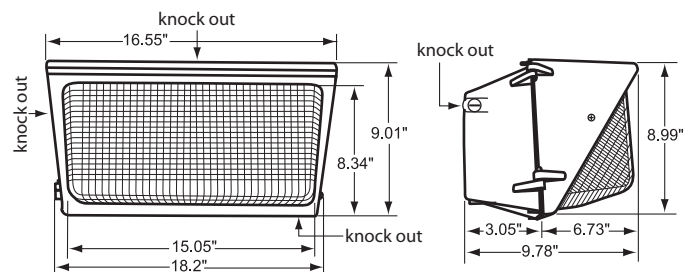
Dimensions and Specifications

Overall Height: 9.01"

Depth: 9.78"

Overall Width: 18.2"

Weight: 15 lbs.



*The majority of Atlas Lighting Products are assembled in USA facilities by an American Workforce utilizing both Domestic and Foreign components

