



**MILBANK**  
ENERGY AT WORK

## U2120-X



Catalog Number	U2120-X
Marketing Product Description	7 Terminal Ringless Large Closing Plate Lever Bypass Side Bussed
UPC	784572134669
Length (IN)	6.5
Width (IN)	17.75
Height (IN)	31.75
Brand Name	Milbank
Type	Ringless Meter Socket
Application	Meter Socket
Standard	UL Listed;Type 3R
Voltage Rating	600 Volts Alternating Current
Amperage Rating	320 Continuous Ampere
Phase	3 Phase
Frequency Rating	60 Hertz
Size	6.5L x 17.75W x 31.75H
Number Of Cutouts	0
Cutout Size	No Main Breaker
Cable Entry	Overhead and Underground and Side Wireway
Terminal	3/8 Inch Stud
Insulation	Glass Polyester
Mounting	Surface Mount

Enclosure	G90 Galvanized Steel with Powder Coat Finish
-----------	--

Jaw Quantity	7 Terminal
--------------	------------

Bypass Type	Lever Bypass
-------------	--------------

Number of Meter Positions	1 Position
---------------------------	------------

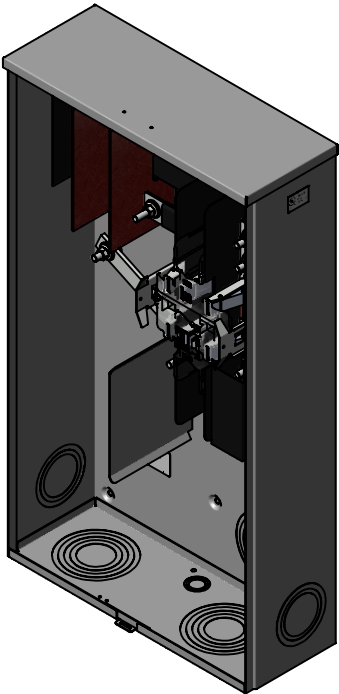
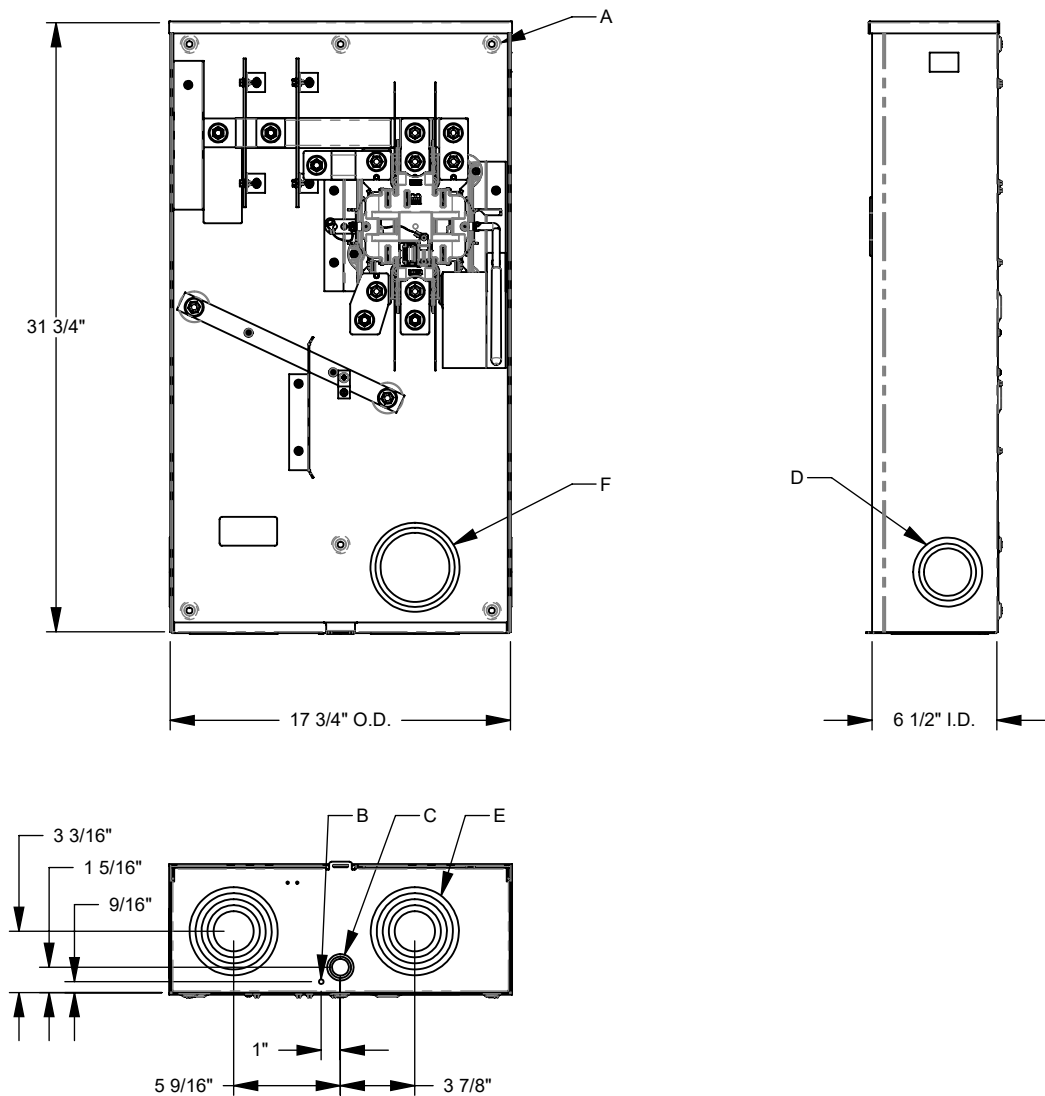
Equipment Ground	Grounding Stud
------------------	----------------

Hub Opening	Large Closing Plate
-------------	---------------------

Number Of Receptacles	0
-----------------------	---

Please consult serving utility for their requirements prior to ordering or installing, as specifications and approvals vary by utility and may require local electrical inspector approval. All installations must be installed by a licensed electrician and must comply with all national and local codes, laws and regulations. Milbank reserves the right to make changes in specifications and features shown without notice or obligation.

FEATURE TABLE		
ITEM	QTY	DESCRIPTION
A	6	U/L MNTG.EMBOSS
B	1	¼ SOLID K.O.
C	1	½, ¾, 1 CONC. K.O.
D	2	2, 2½, 3 CONC. K.O.
E	2	2, 2½, 3, 3½, 4 CONC. K.O.
F	1	3, 3½, 4 CONC. K.O.



Version:

1

**All dimensions are +/- 1/16".  
Drawing views are not to scale.**

Please consult serving utility for their requirements prior to ordering or installing, as specifications and approvals vary by utility, and may require local electrical inspector approval. All installations must be installed by a licensed electrician and must comply with all national and local codes, laws and regulations. Milbank reserves the right to make changes in specifications and features shown without notice or obligation.