

# Steel Box Accessories

## GROUNDING SCREW & PIGTAIL



TP711



TP701



TP704



TP704BULK

Cat. #	Description	Std. Pkg.	Unit Qty.	Wt. Lbs. Per 100
TP701	Grounding Screw with 8" Insulated No. 12 Stranded Wire	1000	1000	2.0
TP711	Grounding Screw with 8" Insulated No. 12 Copper Wire	1000	1000	2.0
TP704	#10-32 x 3/8" Grounding Screw	1000	1000	0.5
TP704BULK	#10-32 x 3/8" Grounding Screws in Jar	1000	1000	0.4

## LOW PROFILE MOUNTING & DRILLING & TAPPING SCREWS



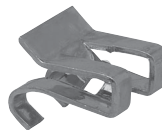
TP710



STS8BULK

Cat. #	Description	Unit Qty.	Wt. Lbs. Per 100
<b>Low Profile Screws – Reduces Risk of Sheetrock Bulge</b>			
TP710	#8 x 1/2" L.P. Screws	1000	0.5
STS8BULK	#8 x 1/2" Self-tapping Screw Jar	1000	0.4

## GROUNDING CLIP



TP706

Cat. #	Description	Std. Pkg.	Unit Qty.	Wt. Lbs. Per 100
TP706	For Grounding Switch and Outlet Boxes Using Non-metallic Sheathed Cables No. 14 and No. 12, with Grounding Wire	1000	100	0.5

## OLD WORK CLIP



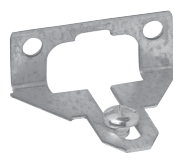
TP651

Cat. #	Description	Std. Pkg.	Unit Qty.	Wt. Lbs. Per 100
TP651	Clips Lock Old Work Steel Switch Boxes Tightly to Wall; Two Required Per Box	250 Sets	25 Sets	4

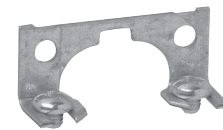
## REPLACEMENT PARTS



TP900



TP901



TP902

Cat. #	Description	Unit Qty.	Wt. Lbs. Per 100
TP900	MC-BX Clamp with Screws	200	17.3
TP901	One Screw Mounting Ear with Screws	200	3.2
TP902	Two Screw Mounting Ear with Screws	200	2.7

# Steel Box Accessories

## HOLD-IT SWITCH BOX SUPPORTS

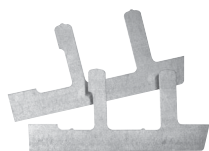


FIG. 1

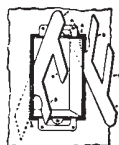


FIG. 2

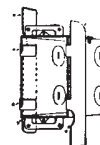


FIG. 3

Cat. #	Description	Unit Qty.	Wt. Lbs. Per 100
TP708	Two Metal Holders for Mounting Old Work Switch Boxes in All Types of Wall Materials	500 Sets	5

## SWITCH BOX EXTENSIONS



TP709

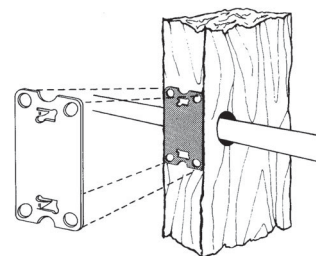
Cat. #	Description	Capacity Cu. In.	Unit Qty.	Wt. Lbs. Per 100
TP709*	Fits Snugly Inside All 3" x 2" Width Boxes; Maximum Adjustable Depth 0.78"; Furnished with Mounting Screws	3.5	50	13

\*Not UL Listed.

## STEEL STUD SAFETY PLATES

### Features:

- Meets requirement of National Electric Code®
- Same size as face of stud
- No nails required
- Protects electrical cable and copper water pipes



Cat. #	Description	Unit Qty.	Wt. Lbs. Per 100
TP659	2" x 3 1/8" Steel Plate	100	11

## "BACK TO BACK" BOX CONNECTORS – ZINC DIE CAST

### Applications:

- For use as a short raceway between two boxes
- Width 1.00"; length 1.12"



Cat. #	Size	Unit Qty.	Wt. Lbs. Per 100
5050	1/2"	25	8

Steel Boxes

# Steel Box Accessories

## GROUNDING SCREW & PIGTAIL



TP711



TP701



TP704



TP704BULK

Cat. #	Description	Std. Pkg.	Unit Qty.	Wt. Lbs. Per 100
TP701	Grounding Screw with 8" Insulated No. 12 Stranded Wire	1000	1000	2.0
TP711	Grounding Screw with 8" Insulated No. 12 Copper Wire	1000	1000	2.0
TP704	#10-32 x 3/8" Grounding Screw	1000	1000	0.5
TP704BULK	#10-32 x 3/8" Grounding Screws in Jar	1000	1000	0.4

## LOW PROFILE MOUNTING & DRILLING & TAPPING SCREWS



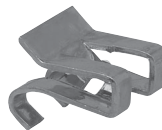
TP710



STS8BULK

Cat. #	Description	Unit Qty.	Wt. Lbs. Per 100
<b>Low Profile Screws – Reduces Risk of Sheetrock Bulge</b>			
TP710	#8 x 1/2" L.P. Screws	1000	0.5
STS8BULK	#8 x 1/2" Self-tapping Screw Jar	1000	0.4

## GROUNDING CLIP



TP706

Cat. #	Description	Std. Pkg.	Unit Qty.	Wt. Lbs. Per 100
TP706	For Grounding Switch and Outlet Boxes Using Non-metallic Sheathed Cables No. 14 and No. 12, with Grounding Wire	1000	100	0.5

## OLD WORK CLIP



TP651

Cat. #	Description	Std. Pkg.	Unit Qty.	Wt. Lbs. Per 100
TP651	Clips Lock Old Work Steel Switch Boxes Tightly to Wall; Two Required Per Box	250 Sets	25 Sets	4

## REPLACEMENT PARTS



TP900



TP901



TP902

Cat. #	Description	Unit Qty.	Wt. Lbs. Per 100
TP900	MC-BX Clamp with Screws	200	17.3
TP901	One Screw Mounting Ear with Screws	200	3.2
TP902	Two Screw Mounting Ear with Screws	200	2.7

# Steel Box Accessories

## HOLD-IT SWITCH BOX SUPPORTS

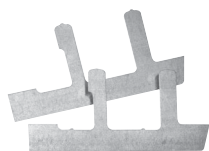


FIG. 1

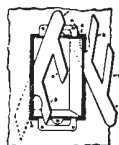


FIG. 2

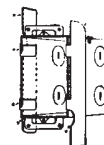


FIG. 3

Cat. #	Description	Unit Qty.	Wt. Lbs. Per 100
TP708	Two Metal Holders for Mounting Old Work Switch Boxes in All Types of Wall Materials	500 Sets	5

## SWITCH BOX EXTENSIONS



TP709

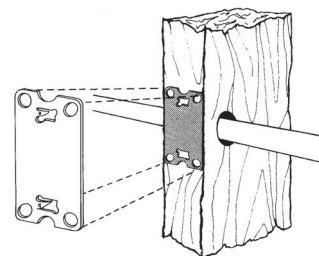
Cat. #	Description	Capacity Cu. In.	Unit Qty.	Wt. Lbs. Per 100
TP709*	Fits Snugly Inside All 3" x 2" Width Boxes; Maximum Adjustable Depth 0.78"; Furnished with Mounting Screws	3.5	50	13

\*Not UL Listed.

## STEEL STUD SAFETY PLATES

### Features:

- Meets requirement of National Electric Code®
- Same size as face of stud
- No nails required
- Protects electrical cable and copper water pipes



Cat. #	Description	Unit Qty.	Wt. Lbs. Per 100
TP659	2" x 3 1/8" Steel Plate	100	11

## "BACK TO BACK" BOX CONNECTORS – ZINC DIE CAST

### Applications:

- For use as a short raceway between two boxes
- Width 1.00"; length 1.12"



Cat. #	Size	Unit Qty.	Wt. Lbs. Per 100
5050	1/2"	25	8

Steel Boxes