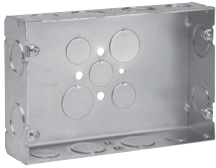


Steel Gang Boxes

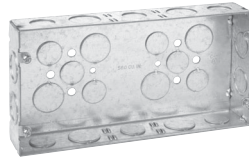
GANG BOXES

1⁵/₈" DEEP x 4¹/₂" HIGH
1/2" & 3/4" KOs

UL LISTED



TP629



TP630



TP640

Cat. #	Gang	Cubic Inches	Width	Knockouts			Unit Qty.	Wt. Lbs. Per 100
				Each End	Each Side	Bottom		
TP629	2	45	6 ³ / ₁₆ "	1 - 1/2", 1 - 3/4"	2 - 1/2", 2 - 3/4"	3 - 1/2", 2 - 3/4"	5	45
TP630	3	58	8 ⁵ / ₈ "	1 - 1/2", 1 - 3/4"	3 - 1/2", 2 - 3/4"	6 - 1/2", 4 - 3/4"	5	58
TP631	4	70	10 ⁷ / ₁₆ "	1 - 1/2", 1 - 3/4"	3 - 1/2", 3 - 3/4"	6 - 1/2", 4 - 3/4"	5	70
TP640	5	85	12 ¹ / ₄ "	1 - 1/2", 1 - 3/4"	4 - 1/2", 3 - 3/4"	6 - 1/2", 4 - 3/4"	1	85
TP641	6	95	14 ¹ / ₁₆ "	1 - 1/2", 1 - 3/4"	4 - 1/2", 4 - 3/4"	6 - 1/2", 4 - 3/4"	1	95

GANG BOXES

2¹/₂" DEEP x 4¹/₂" HIGH
3/4" & 1" KOs

UL LISTED



TP871



TP873

Cat. #	Gang	Cubic Inches	Width	Knockouts			Unit Qty.	Wt. Lbs. Per 100
				Each End	Each Side	Bottom		
TP870	2	71	6 ³ / ₁₆ "	1 - 3/4", 1 - 1"	2 - 3/4", 1 - 1"	3 - 1/2", 2 - 3/4"	10	147
TP871	3	90	8 ⁵ / ₈ "	1 - 3/4", 1 - 1"	4 - 3/4", 1 - 1"	6 - 1/2", 4 - 3/4"	10	183
TP872	4	110	10 ⁷ / ₁₆ "	1 - 3/4", 1 - 1"	2 - 3/4", 2 - 1"	6 - 1/2", 4 - 3/4"	5	216
TP873	5	132	12 ¹ / ₄ "	1 - 3/4", 1 - 1"	3 - 3/4", 2 - 1"	6 - 1/2", 4 - 3/4"	5	263
TP874	6	150	14 ¹ / ₁₆ "	1 - 3/4", 1 - 1"	3 - 3/4", 3 - 1"	6 - 1/2", 4 - 3/4"	5	282

GANG BOX PARTITIONS



TP876



TP877

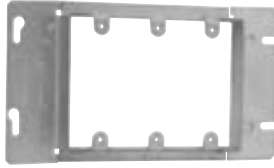
Cat. #	Description	Unit Qty.	Wt. Lbs. Per 100
TP876	For 1 ⁵ / ₈ " Deep Box	25	19
TP877	For 2 ¹ / ₂ " Deep Box	50	24

Steel Gang Box Covers

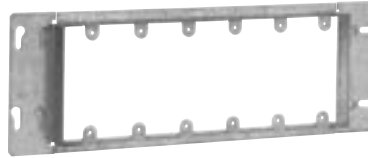
GANG BOX COVERS

RAISED $1\frac{3}{16}$ " FOR PLASTER

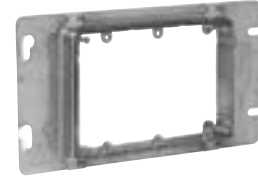
UL LISTED



TP653



TP667



AMR3

Cat. #	Gang	Length	Capacity Cu. In.	Unit Qty.	Wt. Lbs. Per 100
TP657	2	7"	8.5	5	53
TP653	3	8 $\frac{3}{16}$ "	13.5	5	60
AMR3†	3	$\frac{3}{4}$ " - 1 $\frac{1}{2}$ " Raised Adjustable	10.4	25	78
TP655	4	10 $\frac{5}{8}$ "	18.3	5	66
TP661	5	12 $\frac{7}{16}$ "	23.0	5	75
TP667	6	14 $\frac{1}{4}$ "	28.3	5	85

†CSA certified.

GANG BOX COVERS, FLAT, BLANK

UL LISTED



TP803



TP806

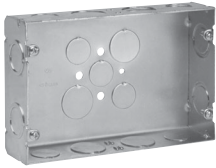
Cat. #	Gang	Length	Unit Qty.	Wt. Lbs. Per 100
TP802	2	7"	5	66
TP803	3	8 $\frac{3}{16}$ "	5	85
TP804	4	10 $\frac{5}{8}$ "	5	94
TP805	5	12 $\frac{7}{16}$ "	1	122
TP806	6	14 $\frac{1}{4}$ "	1	132

Steel Gang Boxes

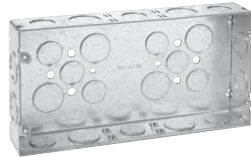
GANG BOXES

1⁵/₈" DEEP x 4¹/₂" HIGH
1/2" & 3/4" KOs

UL LISTED



TP629



TP630



TP640

Cat. #	Gang	Cubic Inches	Width	Knockouts			Unit Qty.	Wt. Lbs. Per 100
				Each End	Each Side	Bottom		
TP629	2	45	6 ³ / ₁₆ "	1 - 1/2", 1 - 3/4"	2 - 1/2", 2 - 3/4"	3 - 1/2", 2 - 3/4"	5	45
TP630	3	58	8 ⁵ / ₈ "	1 - 1/2", 1 - 3/4"	3 - 1/2", 2 - 3/4"	6 - 1/2", 4 - 3/4"	5	58
TP631	4	70	10 ⁷ / ₁₆ "	1 - 1/2", 1 - 3/4"	3 - 1/2", 3 - 3/4"	6 - 1/2", 4 - 3/4"	5	70
TP640	5	85	12 ¹ / ₄ "	1 - 1/2", 1 - 3/4"	4 - 1/2", 3 - 3/4"	6 - 1/2", 4 - 3/4"	1	85
TP641	6	95	14 ¹ / ₁₆ "	1 - 1/2", 1 - 3/4"	4 - 1/2", 4 - 3/4"	6 - 1/2", 4 - 3/4"	1	95

GANG BOXES

2¹/₂" DEEP x 4¹/₂" HIGH
3/4" & 1" KOs

UL LISTED



TP871



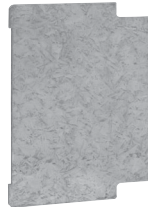
TP873

Cat. #	Gang	Cubic Inches	Width	Knockouts			Unit Qty.	Wt. Lbs. Per 100
				Each End	Each Side	Bottom		
TP870	2	71	6 ³ / ₁₆ "	1 - 3/4", 1 - 1"	2 - 3/4", 1 - 1"	3 - 1/2", 2 - 3/4"	10	147
TP871	3	90	8 ⁵ / ₈ "	1 - 3/4", 1 - 1"	4 - 3/4", 1 - 1"	6 - 1/2", 4 - 3/4"	10	183
TP872	4	110	10 ⁷ / ₁₆ "	1 - 3/4", 1 - 1"	2 - 3/4", 2 - 1"	6 - 1/2", 4 - 3/4"	5	216
TP873	5	132	12 ¹ / ₄ "	1 - 3/4", 1 - 1"	3 - 3/4", 2 - 1"	6 - 1/2", 4 - 3/4"	5	263
TP874	6	150	14 ¹ / ₁₆ "	1 - 3/4", 1 - 1"	3 - 3/4", 3 - 1"	6 - 1/2", 4 - 3/4"	5	282

GANG BOX PARTITIONS



TP876



TP877

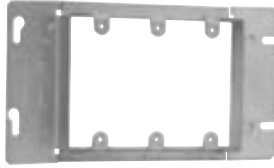
Cat. #	Description	Unit Qty.	Wt. Lbs. Per 100
TP876	For 1 ⁵ / ₈ " Deep Box	25	19
TP877	For 2 ¹ / ₂ " Deep Box	50	24

Steel Gang Box Covers

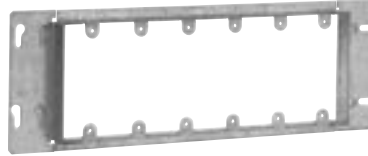
GANG BOX COVERS

RAISED $1\frac{3}{16}$ " FOR PLASTER

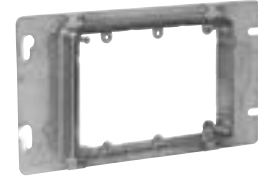
UL LISTED



TP653



TP667



AMR3

Cat. #	Gang	Length	Capacity Cu. In.	Unit Qty.	Wt. Lbs. Per 100
TP657	2	7"	8.5	5	53
TP653	3	8 $\frac{3}{16}$ "	13.5	5	60
AMR3†	3	$\frac{3}{4}$ " - 1 $\frac{1}{2}$ " Raised Adjustable	10.4	25	78
TP655	4	10 $\frac{5}{8}$ "	18.3	5	66
TP661	5	12 $\frac{7}{16}$ "	23.0	5	75
TP667	6	14 $\frac{1}{4}$ "	28.3	5	85

†CSA certified.

GANG BOX COVERS, FLAT, BLANK

UL LISTED



TP803



TP806

Cat. #	Gang	Length	Unit Qty.	Wt. Lbs. Per 100
TP802	2	7"	5	66
TP803	3	8 $\frac{3}{16}$ "	5	85
TP804	4	10 $\frac{5}{8}$ "	5	94
TP805	5	12 $\frac{7}{16}$ "	1	122
TP806	6	14 $\frac{1}{4}$ "	1	132