



CROUSE-HINDS
COMMERCIAL
PRODUCTS

Myers™ Hubs

The broadest, most complete offering for terminating Rigid/IMC to a box or enclosure

The Original! Often imitated, never duplicated! Available in a wide range of sizes, materials and ratings to meet virtually any customer application!

Myers™ is the industry leader others have attempted to duplicate but is unparalleled in selection, capability and dependability. In addition to being the most recognized brand of hub on the market, Myers offers larger stainless hub trade sizes, aluminum hubs, ATEX approved hubs, cap-offs, drains, and more!




Applications:

- Myers hubs are used in the termination of electrical circuits through wall of the enclosure
- Designed for use indoors or outdoors with rigid conduit and IMC
- Ideal for pharmaceutical, chemical and food processing, pulp/paper, nuclear, solar and commercial construction applications
- Suitable for use in environmentally demanding applications, including those with the presence of chemicals, such as acetic, citric and salt water
- Suitable for use in hazardous (classified) locations

Features:

- Wide range of styles, trade sizes and materials to meet customer requirements and preferences
- Multiple certifications provide users peace of mind
- Easy installation and smooth pulling service for labor savings
- Tapered female threads for rigid/IMC conduit, NPSM male threads

Certifications and Compliances:

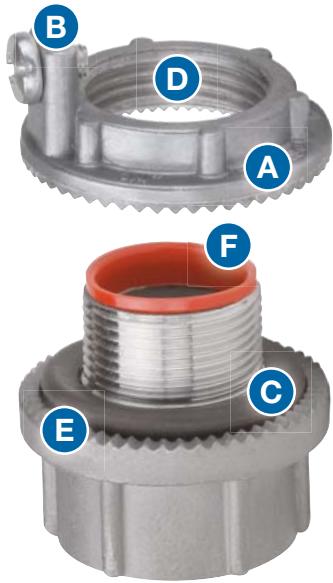
- NEC/CEC:
 - Class I, Division 2
 - Class II, Division 1 & 2
 - Class III, Division 1 & 2
 - Class I, Zone 1, AEx e II
 - Class I, Zone 1, Ex e II
- UL Listed - UL Standard 514B
- CSA Certified - Certified by UL to CSA Standard C22.2 No. 18
- NEMA Type 2, 3, 3R, 4, 4X, 12 (std & ground hub)
- IEC:
 - ATEX Certified to EN60079-0:2009, EN60079-7:2007 and EN60079-14 Standards
 - ATEX Certified ITS12ATEX47591X  II 2G Ex e IIC Gb Ta (-15°C to 120°C)
 - IECEx Certified IECEx ETL 12.0009X to IEC 60079-0:2007-10, Edition 5 and IEC 60079-7:2006-07, Edition 4 IECEx-Ex e II Gb Ta (-15°C to 120°C)
 - IP66

Standard Materials:

- Nut: Zinc (Zamek-2, Zamek-3), Aluminum (Al 360), Stainless (316)
- Body: Zinc (Zamek-2, Zamek-3), Aluminum (Al 360), Stainless (316)
- Insuliner: Lexan
- O-Ring: Gasket Vi Ton
- Ground Screw: Steel/Stainless Steel

Standard Finishes:

- Aluminum: Natural
- Zinc: Natural
- Stainless: Natural



Design Features

- A Vibration-proof** - Strong, oversize nut with radial serrations assures flush installation and positive grounding.
- B Grounding Screw** for added safety.
- C Captive O-Ring Gasket** - Impervious to corrosive moisture and petroleum products. Gasket assures positive water and dust-tight installations.
- D Precision Machine Cut NPT Threads** - Positive fit and simple installation.
- E No Welding** - Unique serrations on both nut and hub bite into metal assuring a positive electrical ground. (UL approved for use with service entrance conduit).
- F Posi-Lok Insulated Throat** - Cannot come out. Standard in sizes from 1/2" through 4".

Hub Basic Scru-Tite®

Hubs are ideal for general use with rigid conduit. Provides positive seal and electrical ground.



Available in trade sizes 3/8" through 6"

Ground Hub

Combines all of the features of the Hub Basic Scru-Tite® plus the additional feature of the grounding screw on the locknut.



Available in trade sizes 1/2" through 6"

ATEX Rated Hub

Hub is listed for use in hazardous (classified) locations to IECEx-ATEX certifications. Ideal for global requirements and OEM's shipping material worldwide.



Available in trade sizes 1/2" through 4"

Through-Bulkhead Fitting

Hubs are the perfect method for installing hubs on cast boxes or through thicker walls.



Metric to NPT Adapter

Used to convert a threaded metric entry to a NPT entry.



Drain Plugs

Designed to install in the bottom of an enclosure to drain any accumulated condensation. Available in aluminum or stainless steel construction.



Cap-Off

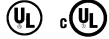
Designed to install in enclosure to provide environmental cap for unused entries or knockouts.



Hub Basic Scru-Tite® NEMA 2, 3, 3R, 4, 4X and 12

Zinc

UL File No. E-27258



Cat. #	Size	Unit Qty.
ST 03†	3/8"	25
ST 1†	1/2"	25
ST 2†	3/4"	25
ST 3†	1"	25
ST 4†	1 1/4"	10
ST 5†	1 1/2"	10
ST 6†	2"	10
ST 7†	2 1/2"	5
ST 8	3"	2
ST 9	3 1/2"	2
ST 10	4"	2
ST 11*	5"	1
ST 12*	6"	1

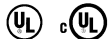
†Optional Nickel-Chrome Plate Finish. Add suffix -CP.

*Not supplied with insulator.



Aluminum

UL File No. E-27258



Cat. #	Size	Unit Qty.
STA 1	1/2"	25
STA 2	3/4"	25
STA 3	1"	25
STA 4	1 1/4"	10
STA 5	1 1/2"	10
STA 6	2"	10
STA 7	2 1/2"	5
STA 8	3"	2
STA 9	3 1/2"	2
STA 10	4"	2
STA 11*	5"	1
STA 12*	6"	1

*Not supplied with insulator.



Ground Hub NEMA 2, 3, 3R, 4, 4X and 12

Zinc

UL File No. E-59509



Cat. #	Size	Unit Qty.	Max. Copper Ground Wire Size CSA‡	UL‡
STG 1	1/2"	25	#8	#8
STG 2	3/4"	25	#8	#8
STG 3	1"	25	#8	#8
STG 4	1 1/4"	10	#8	#8
STG 5	1 1/2"	10	#6	#8
STG 6	2"	10	#4	#8
STG 7	2 1/2"	5	#2	#6
STG 8	3"	2	1 / 0	#6
STG 9	3 1/2"	2	2 / 0	#6
STG 10	4"	2	2 / 0	#4
STG 11*	5"	1	2 / 0	#2
STG 12*	6"	1	3 / 0	#1

*Not supplied with insulator.

‡Use of wire terminal is required by CSA & recommended by UL for wire gauges over 10 AWG.



Aluminum

UL File No. E-59509



Cat. #	Size	Unit Qty.	Max. Copper Ground Wire Size CSA‡	UL‡
STAG 1	1/2"	25	#8	#8
STAG 2	3/4"	25	#8	#8
STAG 3	1"	25	#8	#8
STAG 4	1 1/4"	10	#8	#8
STAG 5	1 1/2"	10	#6	#8
STAG 6	2"	10	#4	#8
STAG 7	2 1/2"	5	#2	#6
STAG 8	3"	2	1 / 0	#6
STAG 9	3 1/2"	2	2 / 0	#6
STAG 10	4"	2	2 / 0	#4
STAG 11*	5"	1	3 / 0	#2
STAG 12*	6"	1	3 / 0	#1

*Not supplied with insulator.

‡Use of wire terminal is required by CSA & recommended by UL for wire gauges over 10 AWG.

Stainless Steel Type 316

UL File No. E-59509



Cat. #	Size	Unit Qty.	Max. Copper Ground Wire Size CSA‡	UL‡
SSTG 1	1/2"	10	#8	#8
SSTG 2	3/4"	10	#8	#8
SSTG 3	1"	10	#8	#8
SSTG 4	1 1/4"	5	#8	#8
SSTG 5	1 1/2"	5	#6	#8
SSTG 6	2"	5	#4	#8
SSTG 7	2 1/2"	2	#2	#6
SSTG 8	3"	2	1 / 0	#6
SSTG 9	3 1/2"	2	2 / 0	#6
SSTG 10	4"	2	2 / 0	#4


‡Use of wire terminal is required by CSA & recommended by UL for wire gauges over 10 AWG.

ATEX Hazardous Location Hub with Increased Safety Ground Terminal

NEMA 2, 3, 3R, 4, 4X and IP66

ATEX and IEC Ex Approval with INTERTEK SEMKO ITS12ATEX47591X IECEx ETL 12.0009X

Zinc

 II 2 G Ex e IIC Gb Ta (-15°C to 120°C)
IECEX - Ex e II Gb Ta (-15°C to 120°C)

UL File No. E-187273



Class I, Zone 1, AEx e II
Class I, Zone 1, Ex e II




Max. Copper
Ground Wire Size

Cat. #	Size	Unit Qty.	CSA‡	UL‡
STGK 1	1/2"	10	#8	#8
STGK 2	3/4"	10	#8	#8
STGK 3	1"	10	#8	#8
STGK 4	1 1/4"	5	#8	#8
STGK 5	1 1/2"	5	#6	#8
STGK 6	2"	5	#4	#8
STGK 7	2 1/2"	2	#2	#6
STGK 8	3"	2	1 / 0	#6
STGK 9	3 1/2"	2	2 / 0	#6
STGK 10	4"	2	2 / 0	#4

‡Use of wire terminal is required by CSA & recommended by UL for wire gauges over 10 AWG.

Stainless Steel

 II 2 G Ex e IIC Gb Ta (-15°C to 120°C)
IECEX - Ex e II Gb Ta (-15°C to 120°C)

UL File No. E-187273



Class I, Zone 1, AEx e II
Class I, Zone 1, Ex e II



Max. Copper
Ground Wire Size

Cat. #	Size	Unit Qty.	CSA‡	UL‡
SSTGK 1	1/2"	10	#8	#8
SSTGK 2	3/4"	10	#8	#8
SSTGK 3	1"	10	#8	#8
SSTGK 4	1 1/4"	5	#8	#8
SSTGK 5	1 1/2"	5	#6	#8
SSTGK 6	2"	5	#4	#8
SSTGK 7	2 1/2"	2	#2	#6
SSTGK 8	3"	2	1 / 0	#6
SSTGK 9	3 1/2"	2	2 / 0	#6
SSTGK 10	4"	2	2 / 0	#4

‡Use of wire terminal is required by CSA & recommended by UL for wire gauges over 10 AWG.



Through-Bulkhead Fitting

Zinc

UL File No. E-27258



Cat. #	Size	Unit Qty.
STTB 1	1/2"	5
STTB 2	3/4"	5
STTB 3	1"	5
STTB 4	1 1/4"	5
STTB 5	1 1/2"	5
STTB 6	2"	5
STTB 7	2 1/2"	4
STTB 8	3"	2
STTB 9	3 1/2"	2
STTB 10	4"	2

Aluminum

UL File No. E-27258



Cat. #	Size	Unit Qty.
STTBA 1	1/2"	5
STTBA 2	3/4"	5
STTBA 3	1"	5
STTBA 4	1 1/4"	5
STTBA 5	1 1/2"	5
STTBA 6	2"	5
STTBA 7	2 1/2"	4
STTBA 8	3"	2

Through-Bulkhead Fitting without Nipples

Zinc

UL File No. E-27258



Packaged as two pieces unassembled

Cat. #	Size	Unit Qty.
STTTB 1	1/2"	5
STTTB 2	3/4"	5
STTTB 3	1"	5
STTTB 4	1 1/4"	5
STTTB 5	1 1/2"	5
STTTB 6	2"	5

Aluminum

UL File No. E-27258



Packaged as two pieces unassembled

Cat. #	Size	Unit Qty.
STTTBA 1	1/2"	5
STTTBA 2	3/4"	5
STTTBA 3	1"	5
STTTBA 4	1 1/4"	5
STTTBA 5	1 1/2"	5
STTTBA 6	2"	5

Metric to NPT Adapter

Zinc



Cat. #	Size	Unit Qty.
STM 1	M20 to 1/2"	25
STM 2	M25 to 3/4"	25
STM 3	M32 to 1"	25
STM 4	M40 to 1 1/4"	10
STM 5	M50 to 1 1/2"	10
STM 6	M63 to 2"	10



Stainless Steel

Cat. #	Size	Unit Qty.
SSTM 1	M20 to 1/2"	10
SSTM 2	M25 to 3/4"	10
SSTM 3	M32 to 1"	10
SSTM 4	M40 to 1 1/4"	5
SSTM 5	M50 to 1 1/2"	5
SSTM 6	M63 to 2"	5

Note: The Myers metric to NPT hub adapter is used to convert a threaded metric entry to a NPT entry. The female thread is NPT and the male thread is metric.

Cap-Off

Zinc

UL File No. E-27258



Cat. #	Size	Unit Qty.
STC 1	1/2"	25
STC 2	3/4"	25
STC 3	1"	25
STC 4	1 1/4"	10
STC 5	1 1/2"	10
STC 6	2"	10

Aluminum

UL File No. E-27258

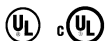


Cat. #	Size	Unit Qty.
STAC 1	1/2"	25
STAC 2	3/4"	25
STAC 3	1"	25

Non-Hazardous Drain Plug

Stainless Steel

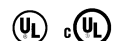
UL File No. E-27258



Cat. #	Size	Unit Qty.
SSTC 1	1/2"	25
SSTC 1CD	1/2"	10

Aluminum

UL File No. E-27258



Cat. #	Size	Unit Qty.
STAC 1ST	1/2"	25
STAC 1CD	1/2"	25

Note: SSTC 1 and STAC 1ST are for knockouts and are supplied with a locknut and straight threads. SSTC 1CD and STAC 1CD are for threaded openings and are supplied without locknut and NPT threads. Not gasketed to allow for water drainage.

Ground Nut

Zinc

UL File No. E-59509



Cat. #	Size	Unit Qty.	Max. Copper Grd. Wire Size	
			CSA	UL
STGN 1	1/2"	25	#8	#8
STGN 2	3/4"	25	#8	#8
STGN 3	1"	25	#8	#8
STGN 4	1 1/4"	10	#8	#8
STGN 5	1 1/2"	10	#6	#8
STGN 6	2"	10	#4	#8

‡Use of wire terminal is required by CSA & recommended by UL for wire gauges over 10 AWG.

Aluminum

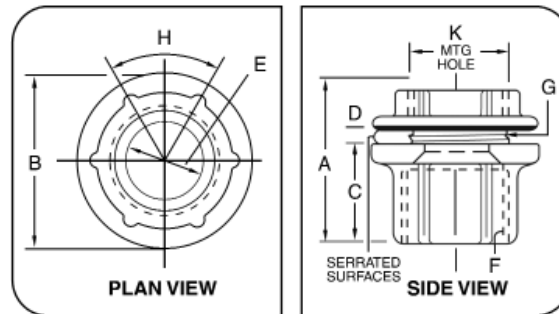
UL File No. E-59509



Cat. #	Size	Unit Qty.	Max. Copper Grd. Wire Size	
			CSA	UL
STAGN 1	1/2"	25	#8	#8
STAGN 2	3/4"	25	#8	#8
STAGN 3	1"	25	#8	#8
STAGN 4	1 1/4"	10	#8	#8
STAGN 5	1 1/2"	10	#6	#8
STAGN 6	2"	10	#4	#8

‡Use of wire terminal is required by CSA & recommended by UL for wire gauges over 10 AWG.

Dimensions



"D" dimension indicates maximum panel thickness hub will accommodate.

Size	A	B	C	D	E		F	G	H	K (Mounting Hole)	
					Min.	Max.				Min.	Max.
3/8	1 3/2	1 1/8	2 1/32	1/8	.468	.493	3/8 NPT	3/8 NPSM	60°	43/64	1 1/16
1/2	1 11/32	1 1/16	1 13/16	3/16	.591	.622	1/2 NPT	1/2 NPSM	60°	55/64	7/8
3/4	1 15/32	1 23/32	2 9/32	3/16	.783	.824	3/4 NPT	3/4 NPSM	60°	1 1/16	1 1/8
1	1 21/32	2	1 11/32	1/4	.997	1.049	1 NPT	1 NPSM	60°	1 21/64	1 3/8
1 1/4	1 11/16	2 3/8	1 11/32	1/4	1.311	1.380	1 1/4 NPT	1 1/4 NPSM	60°	1 43/64	1 3/4
1 1/2	1 11/16	2 3/4	1 11/32	1/4	1.529	1.610	1 1/2 NPT	1 1/2 NPSM	60°	1 59/64	2
2	1 3/4	3 1/4	1 31/32	1/4	1.964	2.067	2 NPT	2 NPSM	60°	2 25/64	2 1/2
2 1/2	2 7/32	3 3/4	1 91/32	1/4	2.346	2.469	2 1/2 NPT	2 1/2 NPSM	60°	2 57/64	3
3	2 5/16	4 3/8	1 31/8	1/4	2.915	3.068	3 NPT	3 NPSM	45°	3 33/64	3 5/8
3 1/2	2 7/8	5	1 11/16	1/4	3.371	3.548	3 1/2 NPT	3 1/2 NPSM	45°	4 11/64	4 1/8
4	2 7/16	5 1/2	1 11/2	1/4	3.825	4.026	4 NPT	4 NPSM	45°	4 33/64	4 5/8
5	2 15/16	6 7/8	2	1/4	4.795	5.047	5 NPT	5 NPSM	45°	5 37/64	5 11/16
6	3	7 11/16	2	5/16	5.762	6.065	6 NPT	6 NPSM	45°	6 41/64	6 3/4

Spacing Chart

CONDUIT OR PIPE SIZE

Conduit Size	1/4	3/8	1/2	3/4	1	1-1/4	1-1/2	2	2-1/2	3	3-1/2	4	5	6
3/8	1-5/32	1-1/4												
1/2	1-5/16	1-13/32	1-9/16											
3/4	1-7/16	1-17/32	1-11/16	1-13/16										
1	1-9/32	1-11/16	1-27/32	1-31/32	2-1/8									
1-1/4	1-25/32	1-7/8	2-1/32	2-5/32	2-5/16	2-1/2								
1-1/2	1-31/32	2-1/16	2-7/32	2-11/32	2-1/2	2-11/16	2-7/8							
2	2-7/32	2-5/16	2-15/32	2-19/32	2-3/4	2-15/16	3-1/8	3-3/8						
2-1/2	2-15/32	2-9/16	2-23/32	2-27/32	3	3-3/16	3-3/8	3-5/8	3-7/8					
3	2-25/32	2-7/8	3-1/32	3-5/32	3-5/16	3-1/2	3-11/16	3-15/16	4-3/16	4-1/2				
3-1/2	3-3/32	3-3/16	3-11/32	3-15/32	3-5/8	3-13/16	4	4-1/4	4-1/2	4-13/16	5-1/8			
4	3-11/32	3-7/16	3-19/32	3-23/32	3-7/8	4-1/16	4-1/4	4-1/2	4-3/4	5-1/16	5-3/8	5-3/4		
5	4-1/32	4-1/8	4-9/32	4-13/32	4-9/16	4-3/4	4-15/16	5-3/16	5-7/16	5-3/4	6-1/16	6-3/16	7-1/8	
6	4-13/32	4-1/2	4-21/32	4-25/32	4-15/16	5-1/8	5-5/16	5-9/16	5-13/16	6-1/8	6-7/16	6-11/16	7-3/8	7-3/4

1. Dimensions in top row (boxed squares) are centers for conduits of same size. Example: How close may 3" conduits be spaced? Answer 4 1/2"

2. Dimensions in light blue shaded squares are for centers of conduits NOT of the same size. Example: What is the minimum spacing for 2" and 3/4" conduit? Read down column marked 2" to figure opposite 3/4" and find dimensions is 2 19/32".

Note. Minimum spacing dimensions as shown will give approximately 1/8" clearance between locking nuts.

Minimum space from center of pipe or conduit to nearest obstruction.

	19/32	11/16	27/32	31/32	1-1/8	1-5/16	1-1/2	1-3/4	2	2-5/16	2-5/8	2-7/8	3-9/16	3-15/16
--	-------	-------	-------	-------	-------	--------	-------	-------	---	--------	-------	-------	--------	---------

For more information:

If further assistance is required, please contact an authorized Cooper Crouse-Hinds Distributor, Sales Office, or Customer Service Department.

U.S. (Global Headquarters):

Cooper Crouse-Hinds

Wolf & Seventh North Streets

Syracuse, NY 13221

(866) 764-5454

FAX: (315) 477-5179

FAX Orders Only: (866) 653-0640

crouse.customerctr@cooperindustries.com

Canada:

Cooper Crouse-Hinds Canada

Toll Free: (800) 265-0502

FAX: (800) 263-9504

FAX Orders Only: (866) 653-0645

Mexico/Latin America/Caribbean:

Cooper Crouse-Hinds, S.A. de C.V.

52-555-804-4000

FAX: 52-555-804-4020

mxmercadotecnia@cooperindustries.com

Europe (Germany):

Cooper Crouse-Hinds GmbH

49 (0) 6271 806-500

49 (0) 6271 806-476

info-ex@ceag.de

Middle East (Dubai):

Cooper Crouse-Hinds LLC

971 4 4272500

FAX: 971 4 4298521

Singapore:

Cooper Crouse-Hinds Pte. Ltd.

65-6297-4849

FAX: 65-6297-4819

chsi-sales@cooperindustries.com

China:

Cooper Crouse-Hinds Pte. Ltd.

86-21-2899-3600

FAX: 8-21-2899-4055

cchsales@cooperindustries.com

Korea:

Cooper Crouse-Hinds Korea

82-2 3484-6783

82-2-3484-6778

CCHK-sales@cooperindustries.com

Australia:

Cooper Electrical Australia

61-2-8787-2777

FAX: 61-2-9609-2342

CEASales@cooperindustries.com

India:

Cooper India Pvt. Ltd.

91-124-4683888

FAX: 91-124-4683899

cchindia@cooperindustries.com

www.crouse-hinds.com

Cooper Crouse-Hinds is a registered trademark of Cooper Industries, Inc.

©2012 Cooper Industries, Inc.

Your Authorized Cooper Crouse-Hinds Distributor is:



Cooper Industries, Ltd.
600 Travis, Ste. 5800
Houston, TX 77002-1001
P: 713-209-8400
www.cooperindustries.com



CROUSE-HINDS
COMMERCIAL
PRODUCTS

Myers™ Hubs

The broadest, most complete offering for terminating Rigid/IMC to a box or enclosure

The Original! Often imitated, never duplicated! Available in a wide range of sizes, materials and ratings to meet virtually any customer application!

Myers™ is the industry leader others have attempted to duplicate but is unparalleled in selection, capability and dependability. In addition to being the most recognized brand of hub on the market, Myers offers larger stainless hub trade sizes, aluminum hubs, ATEX approved hubs, cap-offs, drains, and more!




Applications:

- Myers hubs are used in the termination of electrical circuits through wall of the enclosure
- Designed for use indoors or outdoors with rigid conduit and IMC
- Ideal for pharmaceutical, chemical and food processing, pulp/paper, nuclear, solar and commercial construction applications
- Suitable for use in environmentally demanding applications, including those with the presence of chemicals, such as acetic, citric and salt water
- Suitable for use in hazardous (classified) locations

Features:

- Wide range of styles, trade sizes and materials to meet customer requirements and preferences
- Multiple certifications provide users peace of mind
- Easy installation and smooth pulling service for labor savings
- Tapered female threads for rigid/IMC conduit, NPSM male threads

Certifications and Compliances:

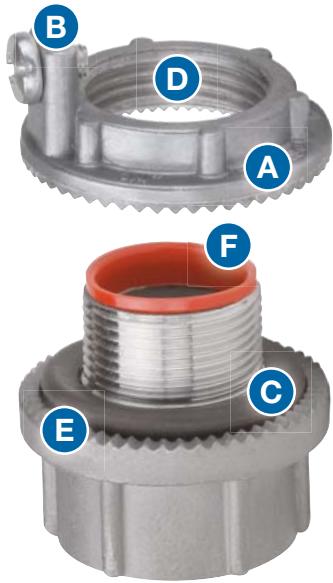
- NEC/CEC:
 - Class I, Division 2
 - Class II, Division 1 & 2
 - Class III, Division 1 & 2
 - Class I, Zone 1, AEx e II
 - Class I, Zone 1, Ex e II
- UL Listed - UL Standard 514B
- CSA Certified - Certified by UL to CSA Standard C22.2 No. 18
- NEMA Type 2, 3, 3R, 4, 4X, 12 (std & ground hub)
- IEC:
 - ATEX Certified to EN60079-0:2009, EN60079-7:2007 and EN60079-14 Standards
 - ATEX Certified ITS12ATEX47591X  II 2G Ex e IIC Gb Ta (-15°C to 120°C)
 - IECEx Certified IECEx ETL 12.0009X to IEC 60079-0:2007-10, Edition 5 and IEC 60079-7:2006-07, Edition 4 IECEx-Ex e II Gb Ta (-15°C to 120°C)
 - IP66

Standard Materials:

- Nut: Zinc (Zamek-2, Zamek-3), Aluminum (Al 360), Stainless (316)
- Body: Zinc (Zamek-2, Zamek-3), Aluminum (Al 360), Stainless (316)
- Insuliner: Lexan
- O-Ring: Gasket Vi Ton
- Ground Screw: Steel/Stainless Steel

Standard Finishes:

- Aluminum: Natural
- Zinc: Natural
- Stainless: Natural



Design Features

- A Vibration-proof** - Strong, oversize nut with radial serrations assures flush installation and positive grounding.
- B Grounding Screw** for added safety.
- C Captive O-Ring Gasket** - Impervious to corrosive moisture and petroleum products. Gasket assures positive water and dust-tight installations.
- D Precision Machine Cut NPT Threads** - Positive fit and simple installation.
- E No Welding** - Unique serrations on both nut and hub bite into metal assuring a positive electrical ground. (UL approved for use with service entrance conduit).
- F Posi-Lok Insulated Throat** - Cannot come out. Standard in sizes from 1/2" through 4".

Hub Basic Scru-Tite®

Hubs are ideal for general use with rigid conduit. Provides positive seal and electrical ground.



Available in trade sizes 3/8" through 6"

Ground Hub

Combines all of the features of the Hub Basic Scru-Tite® plus the additional feature of the grounding screw on the locknut.



Available in trade sizes 1/2" through 6"

ATEX Rated Hub

Hub is listed for use in hazardous (classified) locations to IECEx-ATEX certifications. Ideal for global requirements and OEM's shipping material worldwide.



Available in trade sizes 1/2" through 4"

Through-Bulkhead Fitting

Hubs are the perfect method for installing hubs on cast boxes or through thicker walls.



Metric to NPT Adapter

Used to convert a threaded metric entry to a NPT entry.



Drain Plugs

Designed to install in the bottom of an enclosure to drain any accumulated condensation. Available in aluminum or stainless steel construction.



Cap-Off

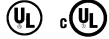
Designed to install in enclosure to provide environmental cap for unused entries or knockouts.



Hub Basic Scru-Tite® NEMA 2, 3, 3R, 4, 4X and 12

Zinc

UL File No. E-27258



Cat. #	Size	Unit Qty.
ST 03†	3/8"	25
ST 1†	1/2"	25
ST 2†	3/4"	25
ST 3†	1"	25
ST 4†	1 1/4"	10
ST 5†	1 1/2"	10
ST 6†	2"	10
ST 7†	2 1/2"	5
ST 8	3"	2
ST 9	3 1/2"	2
ST 10	4"	2
ST 11*	5"	1
ST 12*	6"	1

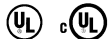
†Optional Nickel-Chrome Plate Finish. Add suffix -CP.

*Not supplied with insulator.



Aluminum

UL File No. E-27258



Cat. #	Size	Unit Qty.
STA 1	1/2"	25
STA 2	3/4"	25
STA 3	1"	25
STA 4	1 1/4"	10
STA 5	1 1/2"	10
STA 6	2"	10
STA 7	2 1/2"	5
STA 8	3"	2
STA 9	3 1/2"	2
STA 10	4"	2
STA 11*	5"	1
STA 12*	6"	1

*Not supplied with insulator.



Ground Hub NEMA 2, 3, 3R, 4, 4X and 12

Zinc

UL File No. E-59509



Cat. #	Size	Unit Qty.	Max. Copper Ground Wire Size CSA†	UL‡
STG 1	1/2"	25	#8	#8
STG 2	3/4"	25	#8	#8
STG 3	1"	25	#8	#8
STG 4	1 1/4"	10	#8	#8
STG 5	1 1/2"	10	#6	#8
STG 6	2"	10	#4	#8
STG 7	2 1/2"	5	#2	#6
STG 8	3"	2	1 / 0	#6
STG 9	3 1/2"	2	2 / 0	#6
STG 10	4"	2	2 / 0	#4
STG 11*	5"	1	2 / 0	#2
STG 12*	6"	1	3 / 0	#1

*Not supplied with insulator.

‡Use of wire terminal is required by CSA & recommended by UL for wire gauges over 10 AWG.



Aluminum

UL File No. E-59509



Cat. #	Size	Unit Qty.	Max. Copper Ground Wire Size CSA†	UL‡
STAG 1	1/2"	25	#8	#8
STAG 2	3/4"	25	#8	#8
STAG 3	1"	25	#8	#8
STAG 4	1 1/4"	10	#8	#8
STAG 5	1 1/2"	10	#6	#8
STAG 6	2"	10	#4	#8
STAG 7	2 1/2"	5	#2	#6
STAG 8	3"	2	1 / 0	#6
STAG 9	3 1/2"	2	2 / 0	#6
STAG 10	4"	2	2 / 0	#4
STAG 11*	5"	1	3 / 0	#2
STAG 12*	6"	1	3 / 0	#1

*Not supplied with insulator.

‡Use of wire terminal is required by CSA & recommended by UL for wire gauges over 10 AWG.

Stainless Steel Type 316

UL File No. E-59509



Cat. #	Size	Unit Qty.	Max. Copper Ground Wire Size CSA†	UL‡
SSTG 1	1/2"	10	#8	#8
SSTG 2	3/4"	10	#8	#8
SSTG 3	1"	10	#8	#8
SSTG 4	1 1/4"	5	#8	#8
SSTG 5	1 1/2"	5	#6	#8
SSTG 6	2"	5	#4	#8
SSTG 7	2 1/2"	2	#2	#6
SSTG 8	3"	2	1 / 0	#6
SSTG 9	3 1/2"	2	2 / 0	#6
SSTG 10	4"	2	2 / 0	#4


‡Use of wire terminal is required by CSA & recommended by UL for wire gauges over 10 AWG.

ATEX Hazardous Location Hub with Increased Safety Ground Terminal

NEMA 2, 3, 3R, 4, 4X and IP66

ATEX and IEC Ex Approval with INTERTEK SEMKO ITS12ATEX47591X IECEx ETL 12.0009X

Zinc

 II 2 G Ex e IIC Gb Ta (-15°C to 120°C)
IECEX - Ex e II Gb Ta (-15°C to 120°C)

UL File No. E-187273



Class I, Zone 1, AEx e II
Class I, Zone 1, Ex e II




Max. Copper
Ground Wire Size

Cat. #	Size	Unit Qty.	CSA‡	UL‡
STGK 1	1/2"	10	#8	#8
STGK 2	3/4"	10	#8	#8
STGK 3	1"	10	#8	#8
STGK 4	1 1/4"	5	#8	#8
STGK 5	1 1/2"	5	#6	#8
STGK 6	2"	5	#4	#8
STGK 7	2 1/2"	2	#2	#6
STGK 8	3"	2	1 / 0	#6
STGK 9	3 1/2"	2	2 / 0	#6
STGK 10	4"	2	2 / 0	#4

‡Use of wire terminal is required by CSA & recommended by UL for wire gauges over 10 AWG.

Stainless Steel

 II 2 G Ex e IIC Gb Ta (-15°C to 120°C)
IECEX - Ex e II Gb Ta (-15°C to 120°C)

UL File No. E-187273



Class I, Zone 1, AEx e II
Class I, Zone 1, Ex e II



Max. Copper
Ground Wire Size

Cat. #	Size	Unit Qty.	CSA‡	UL‡
SSTGK 1	1/2"	10	#8	#8
SSTGK 2	3/4"	10	#8	#8
SSTGK 3	1"	10	#8	#8
SSTGK 4	1 1/4"	5	#8	#8
SSTGK 5	1 1/2"	5	#6	#8
SSTGK 6	2"	5	#4	#8
SSTGK 7	2 1/2"	2	#2	#6
SSTGK 8	3"	2	1 / 0	#6
SSTGK 9	3 1/2"	2	2 / 0	#6
SSTGK 10	4"	2	2 / 0	#4

‡Use of wire terminal is required by CSA & recommended by UL for wire gauges over 10 AWG.



Through-Bulkhead Fitting

Zinc

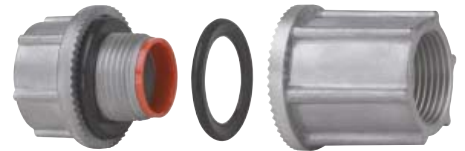
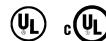
UL File No. E-27258



Cat. #	Size	Unit Qty.
STTB 1	1/2"	5
STTB 2	3/4"	5
STTB 3	1"	5
STTB 4	1 1/4"	5
STTB 5	1 1/2"	5
STTB 6	2"	5
STTB 7	2 1/2"	4
STTB 8	3"	2
STTB 9	3 1/2"	2
STTB 10	4"	2

Aluminum

UL File No. E-27258



Cat. #	Size	Unit Qty.
STTBA 1	1/2"	5
STTBA 2	3/4"	5
STTBA 3	1"	5
STTBA 4	1 1/4"	5
STTBA 5	1 1/2"	5
STTBA 6	2"	5
STTBA 7	2 1/2"	4
STTBA 8	3"	2

Through-Bulkhead Fitting without Nipples

Zinc

UL File No. E-27258



Packaged as two pieces unassembled

Cat. #	Size	Unit Qty.
STTTB 1	1/2"	5
STTTB 2	3/4"	5
STTTB 3	1"	5
STTTB 4	1 1/4"	5
STTTB 5	1 1/2"	5
STTTB 6	2"	5

Aluminum

UL File No. E-27258



Packaged as two pieces unassembled

Cat. #	Size	Unit Qty.
STTTBA 1	1/2"	5
STTTBA 2	3/4"	5
STTTBA 3	1"	5
STTTBA 4	1 1/4"	5
STTTBA 5	1 1/2"	5
STTTBA 6	2"	5

Metric to NPT Adapter

Zinc



Cat. #	Size	Unit Qty.
STM 1	M20 to 1/2"	25
STM 2	M25 to 3/4"	25
STM 3	M32 to 1"	25
STM 4	M40 to 1 1/4"	10
STM 5	M50 to 1 1/2"	10
STM 6	M63 to 2"	10



Stainless Steel

Cat. #	Size	Unit Qty.
SSTM 1	M20 to 1/2"	10
SSTM 2	M25 to 3/4"	10
SSTM 3	M32 to 1"	10
SSTM 4	M40 to 1 1/4"	5
SSTM 5	M50 to 1 1/2"	5
SSTM 6	M63 to 2"	5

Note: The Myers metric to NPT hub adapter is used to convert a threaded metric entry to a NPT entry. The female thread is NPT and the male thread is metric.

Cap-Off

Zinc

UL File No. E-27258



Cat. #	Size	Unit Qty.
STC 1	1/2"	25
STC 2	3/4"	25
STC 3	1"	25
STC 4	1 1/4"	10
STC 5	1 1/2"	10
STC 6	2"	10

Aluminum

UL File No. E-27258

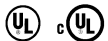


Cat. #	Size	Unit Qty.
STAC 1	1/2"	25
STAC 2	3/4"	25
STAC 3	1"	25

Non-Hazardous Drain Plug

Stainless Steel

UL File No. E-27258



Cat. #	Size	Unit Qty.
SSTC 1	1/2"	25
SSTC 1CD	1/2"	10

Aluminum

UL File No. E-27258



Cat. #	Size	Unit Qty.
STAC 1ST	1/2"	25
STAC 1CD	1/2"	25

Note: SSTC 1 and STAC 1ST are for knockouts and are supplied with a locknut and straight threads. SSTC 1CD and STAC 1CD are for threaded openings and are supplied without locknut and NPT threads. Not gasketed to allow for water drainage.

Ground Nut

Zinc

UL File No. E-59509



Cat. #	Size	Unit Qty.	Max. Copper Grd. Wire Size	
			CSA	UL
STGN 1	1/2"	25	#8	#8
STGN 2	3/4"	25	#8	#8
STGN 3	1"	25	#8	#8
STGN 4	1 1/4"	10	#8	#8
STGN 5	1 1/2"	10	#6	#8
STGN 6	2"	10	#4	#8

‡Use of wire terminal is required by CSA & recommended by UL for wire gauges over 10 AWG.

Aluminum

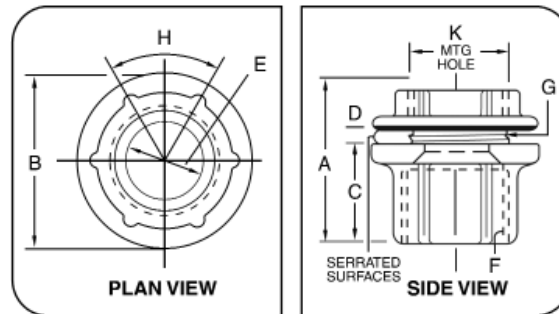
UL File No. E-59509



Cat. #	Size	Unit Qty.	Max. Copper Grd. Wire Size	
			CSA	UL
STAGN 1	1/2"	25	#8	#8
STAGN 2	3/4"	25	#8	#8
STAGN 3	1"	25	#8	#8
STAGN 4	1 1/4"	10	#8	#8
STAGN 5	1 1/2"	10	#6	#8
STAGN 6	2"	10	#4	#8

‡Use of wire terminal is required by CSA & recommended by UL for wire gauges over 10 AWG.

Dimensions



"D" dimension indicates maximum panel thickness hub will accommodate.

Size	A	B	C	D	E		F	G	H	K (Mounting Hole)	
					Min.	Max.				Min.	Max.
3/8	1 3/2	1 1/8	2 1/32	1/8	.468	.493	3/8 NPT	3/8 NPSM	60°	43/64	1 1/16
1/2	1 11/32	1 1/16	1 13/16	3/16	.591	.622	1/2 NPT	1/2 NPSM	60°	55/64	7/8
3/4	1 15/32	1 23/32	2 9/32	3/16	.783	.824	3/4 NPT	3/4 NPSM	60°	1 1/16	1 1/8
1	1 21/32	2	1 11/32	1/4	.997	1.049	1 NPT	1 NPSM	60°	1 21/64	1 3/8
1 1/4	1 11/16	2 3/8	1 11/32	1/4	1.311	1.380	1 1/4 NPT	1 1/4 NPSM	60°	1 43/64	1 3/4
1 1/2	1 11/16	2 3/4	1 11/32	1/4	1.529	1.610	1 1/2 NPT	1 1/2 NPSM	60°	1 59/64	2
2	1 3/4	3 1/4	1 31/32	1/4	1.964	2.067	2 NPT	2 NPSM	60°	2 25/64	2 1/2
2 1/2	2 7/32	3 3/4	1 91/32	1/4	2.346	2.469	2 1/2 NPT	2 1/2 NPSM	60°	2 57/64	3
3	2 5/16	4 3/8	1 31/8	1/4	2.915	3.068	3 NPT	3 NPSM	45°	3 33/64	3 5/8
3 1/2	2 7/8	5	1 71/16	1/4	3.371	3.548	3 1/2 NPT	3 1/2 NPSM	45°	4 11/64	4 1/8
4	2 7/16	5 1/2	1 11/2	1/4	3.825	4.026	4 NPT	4 NPSM	45°	4 33/64	4 5/8
5	2 15/16	6 7/8	2	1/4	4.795	5.047	5 NPT	5 NPSM	45°	5 37/64	5 11/16
6	3	7 11/16	2	5/16	5.762	6.065	6 NPT	6 NPSM	45°	6 41/64	6 3/4

Spacing Chart

CONDUIT OR PIPE SIZE

Conduit Size	1/4	3/8	1/2	3/4	1	1-1/4	1-1/2	2	2-1/2	3	3-1/2	4	5	6
3/8	1-5/32	1-1/4												
1/2	1-5/16	1-13/32	1-9/16											
3/4	1-7/16	1-17/32	1-11/16	1-13/16										
1	1-9/32	1-11/16	1-27/32	1-31/32	2-1/8									
1-1/4	1-25/32	1-7/8	2-1/32	2-5/32	2-5/16	2-1/2								
1-1/2	1-31/32	2-1/16	2-7/32	2-11/32	2-1/2	2-11/16	2-7/8							
2	2-7/32	2-5/16	2-15/32	2-19/32	2-3/4	2-15/16	3-1/8	3-3/8						
2-1/2	2-15/32	2-9/16	2-23/32	2-27/32	3	3-3/16	3-3/8	3-5/8	3-7/8					
3	2-25/32	2-7/8	3-1/32	3-5/32	3-5/16	3-1/2	3-11/16	3-15/16	4-3/16	4-1/2				
3-1/2	3-3/32	3-3/16	3-11/32	3-15/32	3-5/8	3-13/16	4	4-1/4	4-1/2	4-13/16	5-1/8			
4	3-11/32	3-7/16	3-19/32	3-23/32	3-7/8	4-1/16	4-1/4	4-1/2	4-3/4	5-1/16	5-3/8	5-3/4		
5	4-1/32	4-1/8	4-9/32	4-13/32	4-9/16	4-3/4	4-15/16	5-3/16	5-7/16	5-3/4	6-1/16	6-3/16	7-1/8	
6	4-13/32	4-1/2	4-21/32	4-25/32	4-15/16	5-1/8	5-5/16	5-9/16	5-13/16	6-1/8	6-7/16	6-11/16	7-3/8	7-3/4

1. Dimensions in top row (boxed squares) are centers for conduits of same size.
Example: How close may 3" conduits be spaced? Answer 4 1/2"

2. Dimensions in light blue shaded squares are for centers of conduits NOT of the same size. Example: What is the minimum spacing for 2" and 3/4" conduit? Read down column marked 2" to figure opposite 3/4" and find dimensions is 2 19/32".

Note. Minimum spacing dimensions as shown will give approximately 1/8" clearance between locking nuts.

Minimum space from center of pipe or conduit to nearest obstruction.

	19/32	11/16	27/32	31/32	1-1/8	1-5/16	1-1/2	1-3/4	2	2-5/16	2-5/8	2-7/8	3-9/16	3-15/16
--	-------	-------	-------	-------	-------	--------	-------	-------	---	--------	-------	-------	--------	---------

For more information:

If further assistance is required, please contact an authorized Cooper Crouse-Hinds Distributor, Sales Office, or Customer Service Department.

U.S. (Global Headquarters):

Cooper Crouse-Hinds

Wolf & Seventh North Streets

Syracuse, NY 13221

(866) 764-5454

FAX: (315) 477-5179

FAX Orders Only: (866) 653-0640

crouse.customerctr@cooperindustries.com

Canada:

Cooper Crouse-Hinds Canada

Toll Free: (800) 265-0502

FAX: (800) 263-9504

FAX Orders Only: (866) 653-0645

Mexico/Latin America/Caribbean:

Cooper Crouse-Hinds, S.A. de C.V.

52-555-804-4000

FAX: 52-555-804-4020

mxmercadotecnia@cooperindustries.com

Europe (Germany):

Cooper Crouse-Hinds GmbH

49 (0) 6271 806-500

49 (0) 6271 806-476

info-ex@ceag.de

Middle East (Dubai):

Cooper Crouse-Hinds LLC

971 4 4272500

FAX: 971 4 4298521

Singapore:

Cooper Crouse-Hinds Pte. Ltd.

65-6297-4849

FAX: 65-6297-4819

chsi-sales@cooperindustries.com

China:

Cooper Crouse-Hinds Pte. Ltd.

86-21-2899-3600

FAX: 8-21-2899-4055

cchsales@cooperindustries.com

Korea:

Cooper Crouse-Hinds Korea

82-2 3484-6783

82-2-3484-6778

CCHK-sales@cooperindustries.com

Australia:

Cooper Electrical Australia

61-2-8787-2777

FAX: 61-2-9609-2342

CEASales@cooperindustries.com

India:

Cooper India Pvt. Ltd.

91-124-4683888

FAX: 91-124-4683899

cchindia@cooperindustries.com

www.crouse-hinds.com

Cooper Crouse-Hinds is a registered trademark of Cooper Industries, Inc.

©2012 Cooper Industries, Inc.

Your Authorized Cooper Crouse-Hinds Distributor is:



Cooper Industries, Ltd.
600 Travis, Ste. 5800
Houston, TX 77002-1001
P: 713-209-8400
www.cooperindustries.com