

SSA SERIES

DIGITAL AUTO OFF IN-WALL TIME SWITCH



APPLICATIONS



- Offices, meeting rooms, library aisles
- Stock and equipment rooms
- Exhaust fans – work areas, utility rooms, bathrooms
- Hot tub heaters and circulating pumps
- Timed override lighting and HVAC for after hours and for loads controlled by electromechanical or digital time switches.

FEATURES

8-IN-1 TIMING: Choose from 8 preset ON intervals.

MANUAL SCROLL-UP: Option allows adjustment in 10 minute intervals.

FLASH WARNING: Optional flicker feature turns load off for 1 second, 2 minutes before end of timed cycle and again 1 minute before end of timed cycle.

AUDIBLE WARNING: Optional beep will sound every 12 seconds during the last 2 minutes of timed cycle.

TAMPER RESISTANT: Time ON interval preset hidden behind wall plate.

EASY SET: Dip switches provide quick set-up of timing and options.

EASY WIRING: No neutral needed, great for retrofit.

BACKLIT DISPLAY: Numerical read-out of time remaining includes graphic bar showing time remaining in 10% increments. Stands out strongly in lighted and dark areas.

WALL PLATE: Supplied with white standard single gang decorator wall plate.

SSA-R24: Offers low voltage control with SPDT output and includes momentary input.

SPECIFICATIONS

TIMING ACCURACY: .002%.

INPUT VOLTAGE:
120/277 VAC, 50/60Hz.

WIRE SIZE: #18AWG.

OPERATING TEMPERATURE:
0°F to +100°F (-17°C to +37°C).

ORDERING INFO

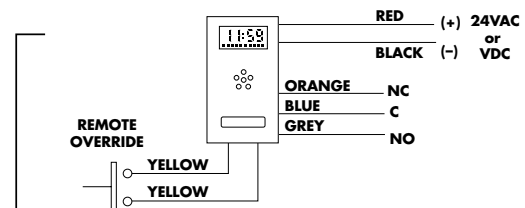
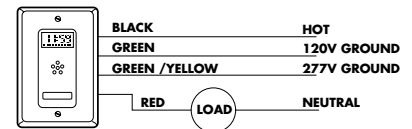
| CATALOG NO. | UPC CODE | INPUT SUPPLY | TIME SETTINGS | OUTPUT CONTACTS |
|-------------|----------|--------------|--|-----------------|
| SSA100 | 14010 | 120/277 VAC | Minutes: 5, 15, 30 Hours: 1, 3, 6, 9, 12 | SPST |
| SSA200 | 14011 | 120/277 VAC | Minutes: 10, 20, 40 Hours: 1, 1½, 2, 4, 8 | SPST |
| SSA100R-24 | 14014 | 24VAC/24VDC | Minutes: 5, 15, 30 Hours: 1, 3, 6, 9, 12 | SPDT |
| SSA200R-24 | 14015 | 24VAC/24VDC | Minutes: 10, 20, 40 Hours: 1, 1½, 2, 4, 8 | SPDT |
| LCS115M | 82082 | | Momentary Switch for Override (white) | SPST |

CONTACT RATINGS

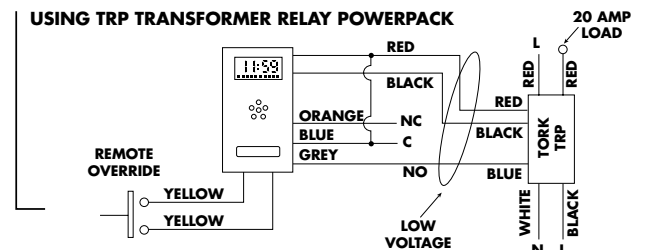
| | TYPE | VOLTAGE | RATING |
|----------------|------------|---------|--------|
| SSA100/200 | Tungsten | 120VAC | 800W |
| | Ballast | 120VAC | 800W |
| | | 277VAC | 1200W |
| | Motor | 120VAC | 1/8HP |
| SSA100/200R-24 | Pilot Duty | 120VAC | 240VA |
| | 30V | 30V | 1A |
| | 1V min. | 1V min. | 100µA |

WIRING DIAGRAMS

SSA100/200



SSA200R-24



SSA SERIES

DIGITAL AUTO OFF IN-WALL TIME SWITCH



APPLICATIONS



- Offices, meeting rooms, library aisles
- Stock and equipment rooms
- Exhaust fans – work areas, utility rooms, bathrooms
- Hot tub heaters and circulating pumps
- Timed override lighting and HVAC for after hours and for loads controlled by electromechanical or digital time switches.

FEATURES

8-IN-1 TIMING: Choose from 8 preset ON intervals.

MANUAL SCROLL-UP: Option allows adjustment in 10 minute intervals.

FLASH WARNING: Optional flicker feature turns load off for 1 second, 2 minutes before end of timed cycle and again 1 minute before end of timed cycle.

AUDIBLE WARNING: Optional beep will sound every 12 seconds during the last 2 minutes of timed cycle.

TAMPER RESISTANT: Time ON interval preset hidden behind wall plate.

EASY SET: Dip switches provide quick set-up of timing and options.

EASY WIRING: No neutral needed, great for retrofit.

BACKLIT DISPLAY: Numerical read-out of time remaining includes graphic bar showing time remaining in 10% increments. Stands out strongly in lighted and dark areas.

WALL PLATE: Supplied with white standard single gang decorator wall plate.

SSA-R24: Offers low voltage control with SPDT output and includes momentary input.

SPECIFICATIONS

TIMING ACCURACY: .002%.

INPUT VOLTAGE:
120/277 VAC, 50/60Hz.

WIRE SIZE: #18AWG.

OPERATING TEMPERATURE:
0°F to +100°F (-17°C to +37°C).

ORDERING INFO

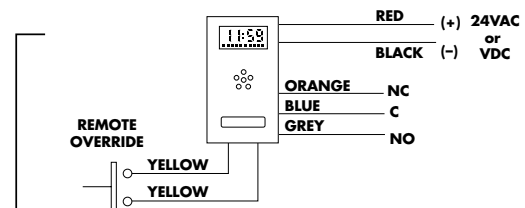
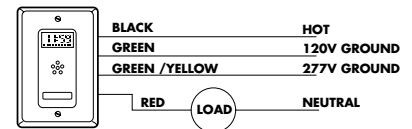
| CATALOG NO. | UPC CODE | INPUT SUPPLY | TIME SETTINGS | OUTPUT CONTACTS |
|-------------|----------|--------------|--|-----------------|
| SSA100 | 14010 | 120/277 VAC | Minutes: 5, 15, 30 Hours: 1, 3, 6, 9, 12 | SPST |
| SSA200 | 14011 | 120/277 VAC | Minutes: 10, 20, 40 Hours: 1, 1½, 2, 4, 8 | SPST |
| SSA100R-24 | 14014 | 24VAC/24VDC | Minutes: 5, 15, 30 Hours: 1, 3, 6, 9, 12 | SPDT |
| SSA200R-24 | 14015 | 24VAC/24VDC | Minutes: 10, 20, 40 Hours: 1, 1½, 2, 4, 8 | SPDT |
| LCS115M | 82082 | | Momentary Switch for Override (white) | SPST |

CONTACT RATINGS

| | TYPE | VOLTAGE | RATING |
|----------------|------------|---------|--------|
| SSA100/200 | Tungsten | 120VAC | 800W |
| | Ballast | 120VAC | 800W |
| | | 277VAC | 1200W |
| | Motor | 120VAC | 1/8HP |
| SSA100/200R-24 | Pilot Duty | 120VAC | 240VA |
| | 30V | 30V | 1A |
| | 1V min. | 1V min. | 100µA |

WIRING DIAGRAMS

SSA100/200



SSA200R-24

