

# Calbrite™

## Stainless Steel Conduit Systems

### Stainless Steel Couplings

#### Features:

- Manufactured in type 304 and 316 stainless steel to meet any stringent sanitary condition
- Polished with standard "brite" finish to increase corrosion resistance and aesthetic appearance
- Included with each length of stainless threaded conduit
- Straight threads—NPS
- No package qty. required



#### Certifications and Compliances:

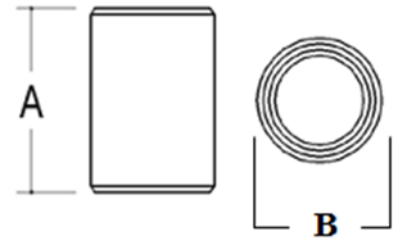
UL / cUL 6A Listed  
 UL file number – E230584  
 Manufactured in accordance with CSA C22.1, Canadian Electrical Code, Part 1, NOM-001-SEDE, Standard for Electrical Installations, Inclusive for installation in accordance with Article 344 of ANSI/NFPA 70, "National Electrical Code" (NEC)  
 Manufactured in the USA

#### Applications:

Designed for use with stainless steel rigid conduit, and to connect threaded stainless conduit, nipples, and other threaded fittings.

#### Industries Commonly Served:

- Food & Beverage Production & Distribution
- Chemical Plants
- Water & Wastewater Treatment
- Pharmaceuticals & Cosmetics
- Refining & Extraction Sites
- Petrochemical
- Pulp & Paper Mills
- Marine & Coastal Facilities
- Along with other corrosive environments



Size	Part Number	A	B	I.D.	Wall Thickness	Weight (ea) per lb.
1/2"	S60500CP00	1.640"	1.035"	0.840"	.110"	0.13
3/4"	S60700CP00	1.645"	1.260"	1.050"	.140"	0.20
1"	S61000CP00	2.000"	1.550"	1.315"	.160"	0.34
1-1/4"	S61200CP00	2.050"	1.880"	1.660"	.160"	0.38
1-1/2"	S61500CP00	2.085"	2.200"	1.900"	.200"	0.65
2"	S62000CP00	2.165"	2.740"	2.375"	.200"	0.90
2-1/2"	S62500CP00	3.210"	3.330"	2.875"	.250"	2.10
3"	S63000CP00	3.315"	3.800"	3.500"	.250"	2.20
4"	S64000CP00	3.540"	4.890"	4.500"	.250"	3.19
5"	S65000CP00	3.970"	6.340"	5.563"	.440"	8.66
6"	S66000CP00	4.270"	7.340"	6.625"	.440"	10.00

All dimensions are for informational purposes only \*Tolerances +/- 5%