

## OLD WORK SWITCH AND OUTLET BOX WITH QUICK/CLICK

S352W | [Pass & Seymour](#)

### FEATURES & BENEFITS

Triple Gang, Old Work Switch and Outlet Box with Swing-Bracket for mounting. Adjusts from 1 1/4" down to 1/8".  
Six Auto/Clamps for Each End. 10 pack.



- Quick/Click feature secures devices quickly and easily.
- Does not strip when over-torqued.
- 6 Auto/Clamps on each end eliminate the need for separate cable clamps.
- Metal swing bracket for quick mounting in existing walls.
- Big 52 cubic inch capacity.
- Divider plate (LVDIV1, sold separately) used when installing line and low-voltage devices or multiple 277 volt devices in same box.
- Easy installation, rectangular cutout.
- Swing bracket adjusts from 1 1/4 inch to 1/8 inch.
- Durable, impact-resistant thermoplastic box.

### SPECIFICATIONS

#### GENERAL INFO

Product Series: Slater

Type: Switch, Outlet Box

Special Features: Old Work, Quick/Click

#### LISTING AGENCIES/THIRD PARTY CERTIFICATIONS

RoHS: Yes

CSA Listing Info: No

CUL Listing No: No  
cULus: Yes  
cURus: No  
Federal Spec: No  
UL Listing No: No  
UN SPSC: 39121308  
UR: No

#### **DIMENSIONS**

Depth (US): 3.03125  
Length (US): 3.75  
Width (US): 5.875  
Volume: 52.0

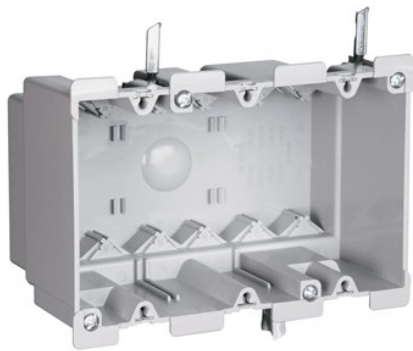
#### **TECHNICAL INFORMATION**

Material: Plastic

#### **BUY AMERICAN ACT COMPLIANCE**

Country Of Origin: UNITED STATES OF AMERICA  
Buy American Act Status: Buy American Act Compliant





## OLD WORK SWITCH AND OUTLET BOX WITH QUICK/CLICK

S352W | [Pass & Seymour](#)

### FEATURES & BENEFITS

Triple Gang, Old Work Switch and Outlet Box with Swing-Bracket for mounting. Adjusts from 1 1/4" down to 1/8".  
Six Auto/Clamps for Each End. 10 pack.



- Quick/Click feature secures devices quickly and easily.
- Does not strip when over-torqued.
- 6 Auto/Clamps on each end eliminate the need for separate cable clamps.
- Metal swing bracket for quick mounting in existing walls.
- Big 52 cubic inch capacity.
- Divider plate (LVDIV1, sold separately) used when installing line and low-voltage devices or multiple 277 volt devices in same box.
- Easy installation, rectangular cutout.
- Swing bracket adjusts from 1 1/4 inch to 1/8 inch.
- Durable, impact-resistant thermoplastic box.

### SPECIFICATIONS

#### GENERAL INFO

Product Series: Slater

Type: Switch, Outlet Box

Special Features: Old Work, Quick/Click

#### LISTING AGENCIES/THIRD PARTY CERTIFICATIONS

RoHS: Yes

CSA Listing Info: No

CUL Listing No: No  
cULus: Yes  
cURus: No  
Federal Spec: No  
UL Listing No: No  
UN SPSC: 39121308  
UR: No

#### **DIMENSIONS**

Depth (US): 3.03125  
Length (US): 3.75  
Width (US): 5.875  
Volume: 52.0

#### **TECHNICAL INFORMATION**

Material: Plastic

#### **BUY AMERICAN ACT COMPLIANCE**

Country Of Origin: UNITED STATES OF AMERICA  
Buy American Act Status: Buy American Act Compliant

