

LED Retrofit Collection
RL and RA Series

HALO



EATON

Powering Business Worldwide

RL4 Series

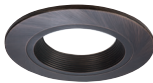


- Up to 700 lumens (lumens per selected CCT and CRI)
- Use to replace 60W PAR16, 50W PAR20 or 40W R20 lamp
- 2700K, 3000K, 3500K, 4000K, 5000K Correlated Color Temperature (CCT)
- 80 CRI & 90 CRI
- 8W - 8.3W (Per CRI and CCT), 120V
- Halo matte white finish
- Push-N-Twist universal installation clips pre-installed
- Compatible with most 4" recessed housings
- Dimmable to 5% with select dimmers
- Damp and wet location listed (shower rated)
- Rated for IC, ICAT and may be used in Non-IC housings
- AIR-TITE™ certified per ASTM-E283
- Diffusing, regressed lens
- Five-year limited warranty

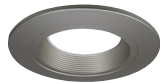
RL4 Designer Trims (Order Separately)



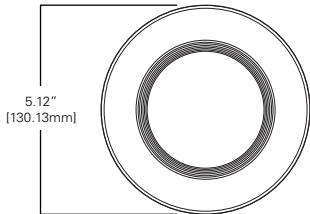
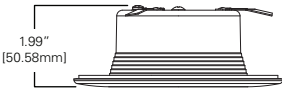
RL4TRMWHB
White (Paintable)



RL4TRMTBZB
Tuscan Bronze



RL4TRMSNB
Satin Nickel



OVER \$500^A SAVINGS

^A Savings are over the life of the Halo RL4 luminaire.

Energy savings: \$383

Replacement lamp savings: \$166

Savings based on \$0.155 per kilowatt hour, average six hours use per day, 50,000 hours of lamp usage, and 60W PAR16 Halogen lamp lumen equivalent.

4" LED Retrofit Downlight

Push-N-Twist
Universal Installation Clip



Ordering Information

Sample Number: **RL460WH930PK**
Order Halo housing separately.

RL4 Models – 4" LED Retrofit Baffle - Trim

90 CRI

- RL460WH927PK**= 90 CRI, 2700K
- RL460WH930PK**= 90 CRI, 3000K
- RL460WH935PK**= 90 CRI, 3500K
- RL460WH940PK**= 90 CRI, 4000K
- RL460WH950PK**= 90 CRI, 5000K

80 CRI

- RL460WH827PK**= 80 CRI, 2700K
- RL460WH830PK**= 80 CRI, 3000K
- RL460WH835PK**= 80 CRI, 3500K
- RL460WH840PK**= 80 CRI, 4000K

LED Housings (Order Separately)

See Housing Compatibility, Page 12

Accessories (Order Separately)

- RL4TRMSNB**=Satin Nickel Trim Ring
- RL4TRMTBZB**=Tuscan Bronze Trim Ring
- RL4TRMWHB**=White Paintable Trim Ring
- HE26LED**=Replacement screw base adapter (one included with unit)



HE26LED
Edison Base Adapter
for retrofit (included)

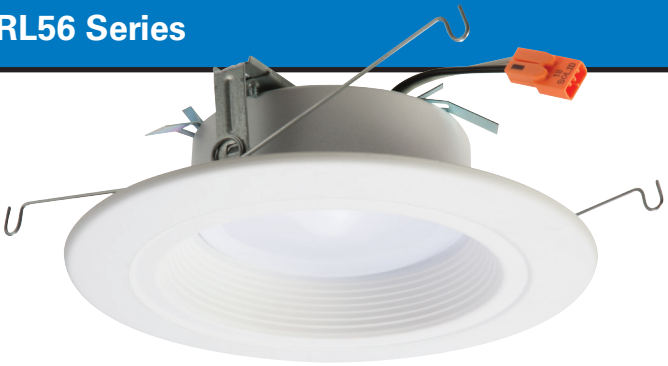
RL4 Energy Data	80 CRI	90 CRI
Max. Lumens (5000K)	713	600
Input Voltage	120V	
Input Frequency	50/60 Hz	
Input Power	8.0W - 8.3W (per CRI and CCT)	
Input Current	0.075A - 0.0875A (Per input power)	
Power Factor	>0.90	
THD	<20%	
EMI/RFI	FCC Title 47 CFR, Part 15, Class B (Consumer)	
Sound Rating	Class A	
Minimum Starting Temp	-30°C (-22°F)	



Refer to ENERGY STAR® Certified Products List.

Can be used to comply with California Title 24 High Efficacy requirements.
Certified to California Title 20 Appliance Efficiency Database.

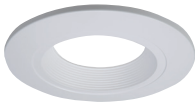
RL56 Series



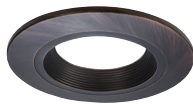
- 600 Series: up to 671 lumens¹
900 Series: up to 1100 lumens¹
1200 Series: up to 1330 lumens¹
- 600 Series: use to replace 65W BR30 or 50W PAR30 lamp
900 Series: use to replace 75W PAR30 lamp
1200 Series: use to replace 90W BR40 lamp
- 2700K, 3000K, 3500K, 4000K, 5000K CCT²
- 80 CRI & 90 CRI
- 600 Series: 7.2W - 9.6W (per CRI and CCT), 120V
900 Series: 13.5W, 120V
1200 Series: 17.3W - 18.0W (per CRI and CCT), 120V
- Halo matte white finish
- Torsion springs pre-installed
- Optional Push-N-Twist universal installation two piece clips
- Compatible with most 5" and 6" standard and shallow recessed housings
- Dimmable to 5% with select dimmers
- Damp and wet location listed (shower rated)
- Rated for IC, ICAT and may be used in Non-IC housings
- AIR-TITE™ certified per ASTM-E283
- Diffusing, regressed lens
- Five-year limited warranty

1. Lumens per selected CCT and CRI
2. CCT - Correlated Color Temperature

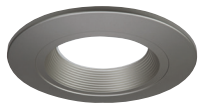
RL56 Designer Trims (Order Separately)



RL56TRMWHB
White (Paintable)



RL56TRMTBZB
Tuscan Bronze

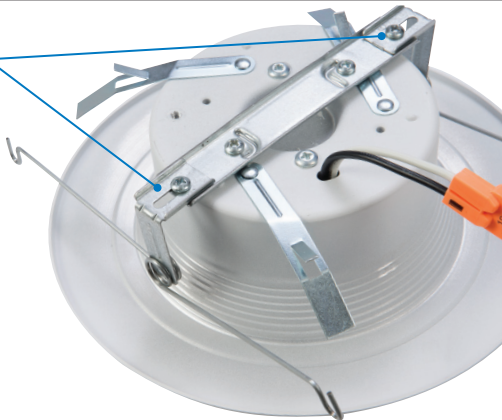


RL56TRMSNB
Satin Nickel

OVER \$500^A SAVINGS

^A Savings are over the life of the Halo RL56 luminaire.
Energy savings: \$430
Replacement lamp savings: \$100
Savings based on \$0.155 per kilowatt hour, average six hours use per day, 50,000 hours of lamp usage, and 65W BR30 Halogen lamp lumen equivalent.

Torsion Springs



Example:
RL56-600 Series

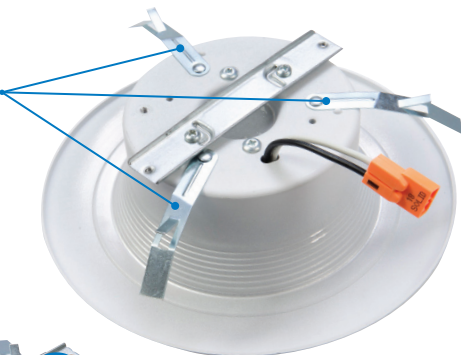


5 Inch housing position



6 Inch housing position

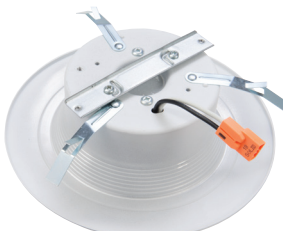
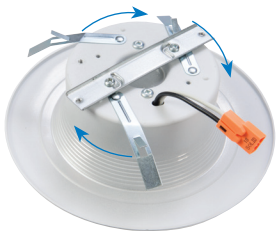
Push-N-Twist
Universal Installation Clip



Example:
RL56-600 Series



To use the Push-N-Twist clips, the torsion springs must be removed. Do not remove the main bracket.



Once the torsion springs are removed, rotate the clips into position and install into the housing.

RL56 Series

Ordering Information

Sample Number: **RL560WH6927**

Order Halo housing separately.

RL56 600 Series – 5" / 6" LED Retrofit Baffle - Trim

90 CRI

RL560WH6927= 90 CRI, 2700K

RL560WH6930= 90 CRI, 3000K

RL560WH6935= 90 CRI, 3500K

RL560WH6940= 90 CRI, 4000K

RL560WH6950= 90 CRI, 5000K

80 CRI

RL560WH6827= 80 CRI, 2700K

RL560WH6830= 80 CRI, 3000K

RL560WH6835= 80 CRI, 3500K

RL560WH6840= 80 CRI, 4000K

RL56 900 Series – 5" / 6" LED Retrofit Baffle - Trim

90 CRI

RL560WH9927= 90 CRI, 2700K

RL560WH9930= 90 CRI, 3000K

RL560WH9935= 90 CRI, 3500K

RL560WH9940= 90 CRI, 4000K

RL560WH9950= 90 CRI, 5000K

80 CRI

RL560WH9827= 80 CRI, 2700K

RL560WH9830= 80 CRI, 3000K

RL560WH9835= 80 CRI, 3500K

RL560WH9840= 80 CRI, 4000K

RL56 1200 Series – 5" / 6" LED Retrofit Baffle - Trim

90 CRI

RL560WH12927= 90 CRI, 2700K

RL560WH12930= 90 CRI, 3000K

RL560WH12935= 90 CRI, 3500K

RL560WH12940= 90 CRI, 4000K

RL560WH12950= 90 CRI, 5000K

LED Housings (Order Separately)

See Housing Compatibility, Page 13

Accessories (Order Separately)

RL56TRMSNB=Satin Nickel Trim Ring

RL56TRMTBZB=Tuscan Bronze Trim Ring

RL56TRMWHB=White Paintable Trim Ring

OT400P=Oversize Flat White Metal Trim Ring, 6" I.D. x 9-1/4" O.D. (Ring slips behind RL56 ring in stepped configuration.)

OT403P=Oversize White Plastic Trim Ring, 6" I.D. x 8" O.D. (Ring slips behind RL56 ring in stepped configuration.)

TRM690WH=Oversize Matte White Metal Trim Ring. Designed for RL56 ring to inset into oversize ring for an even (non-stepped) trim surface.

HE26LED=Replacement screw base adapter (one included with unit)



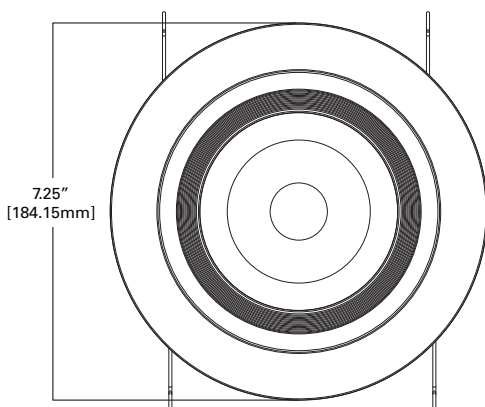
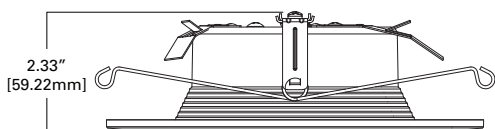
Refer to ENERGY STAR® Certified Products List.

Can be used to comply with California Title 24 High Efficacy requirements.
Certified to California Title 20 Appliance Efficiency Database.

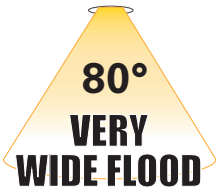
5" / 6" LED Retrofit Downlight 600, 900, 1200 Series

RL56 Energy Data	600 Series		900 Series	
	80 CRI	90 CRI	80 CRI	90 CRI
Max. Lumens (4000K)	598	653	1100	950
Input Voltage	120V		120V	
Input Frequency	50/60 Hz		50/60 Hz	
Input Power	7.2W - 9.6W (Per CRI and CCT)		13.5W	
Input Current	0.15 A		0.15 A	
Power Factor	>0.90		>0.90	
THD	<20%		<20%	
EMI/RFI	FCC Title 47 CFR, Part 15, Class B (Consumer)		FCC Title 47 CFR, Part 15, Class B (Consumer)	
Sound Rating	Class A		Class A	
Minimum Starting Temp	-30°C (-22°F)		-30°C (-22°F)	

RL56 Energy Data	1200 Series	
	90 CRI	
Max. Lumens (5000K)	1330	
Input Voltage	120V	
Input Frequency	50/60 Hz	
Input Power	17.3W - 18.0W (Per CRI and CCT)	
Input Current	0.15 A	
Power Factor	>0.90	
THD	<20%	
EMI/RFI	FCC Title 47 CFR, Part 15, Class B (Consumer)	
Sound Rating	Class A	
Minimum Starting Temp	-30°C (-22°F)	

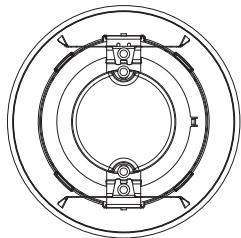
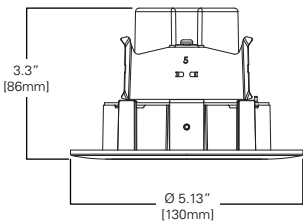


RA4 Series



- Adjustable Gimbal for accent, task, grazing and downlighting
 - 35° Tilt, up to 360° rotation
- Beam distribution options
 - NFL - Narrow Flood (25°)
 - VWFL - Very Wide Flood (80°)
- Up to 640 lumens (lumens per selected CCT and CRI)
- Use to replace 40W R40 lamp (VWFL), or 60W PAR16 (NFL), or 50W PAR20 lamp (NFL)
- 2700K, 3000K Correlated Color Temperature (CCT)
- 90 CRI
- 10.0W, 120V
- Halo matte white finish
- Compatible with most 4" recessed housings
- Flexible mounting with friction blades
- Dimmable to 5% with select dimmers
- Damp location listed
- Rated for IC, ICAT and may be used in Non-IC housings
- Five-year limited warranty

*Lumens per CCT and beam optic



4" LED Retrofit Adjustable Gimbal

Ordering Information

Sample Number: **RA406930WH**

Order Halo housing separately.

RA4 Models – 4" LED Adjustable Gimbal

Very Wide Flood – VWFL Models

RA406927WH= 90 CRI, 2700K

RA406930WH= 90 CRI, 3000K

Narrow Flood – NFL Models

RA406927NFLWH= 90 CRI, 2700K

RA406930NFLWH= 90 CRI, 3000K

LED Housings (Order Separately)

See Housing Compatibility, Page 12

Accessories

HE26LED=Replacement screw base adapter (one included with unit)

RA4 Energy Data	NFL	VWFL
Max. Lumens (3000K)	640	615
Input Voltage	120V	
Input Frequency	50/60 Hz	
Input Power	10W	
Input Current	0.85 A	
Power Factor	>0.90	
THD	<20%	
EMI/RFI	FCC Title 47 CFR, Part 15, Class B (Consumer)	
Sound Rating	Class A	
Minimum Starting Temp	-30°C (-22°F)	

**OVER \$500^Δ
SAVINGS**

^Δ Savings are over the life of the Halo RA4 luminaire.

Energy savings: \$387

Replacement lamp savings: \$166

Savings based on \$0.155 per kilowatt hour, average six hours use per day, 50,000 hours of lamp usage, and 60W PAR16 Halogen lamp lumen equivalent.

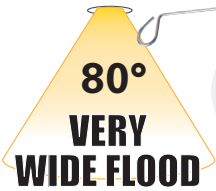


90 CRI

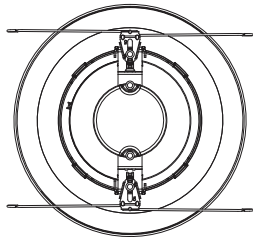
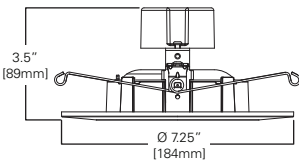


Refer to ENERGY STAR® Certified Products List. Can be used to comply with California Title 24 High Efficacy requirements. Certified to California Title 20 Appliance Efficiency Database.

RA56 Series



- Adjustable Gimbal for accent, task, grazing and downlighting
 - 35° Tilt, up to 360° rotation
- Beam distribution options
 - NFL - Narrow Flood (25°)
 - VWFL - Very Wide Flood (80°)
- Up to 670 lumens (lumens per selected CCT, CRI and beam optic.)
- Use to replace 65W BR30 lamp (VWFL) or 50W PAR30 lamp (NFL)
- 2700K, 3000K Correlated Color Temperature (CCT)
- 90 CRI
- 10.0W, 120V
- Halo matte white finish
- Compatible with most 5" and 6" standard and shallow recessed housings
- Flexible mounting with torsion springs or friction clips (included)
- Dimmable to 5% with select dimmers
- Damp location listed
- Listed use in IC, ICAT and may be used in Non-IC housings
- Five-year limited warranty



Ordering Information

Sample Number: **RA5606930WH**

Order Halo housing separately.

RA56 Models – 5"/6" LED Adjustable Gimbal

Very Wide Flood - VWFL Models

RA5606927WH= 90CRI, 2700K

RA5606930WH= 90CRI, 3000K

Narrow Flood - NFL Models

RA5606927NFLWH= 90CRI, 2700K

RA5606930NFLWH= 90CRI, 3000K

LED Housings (Order Separately)

See Housing Compatibility, Page 13

Accessories

HE26LED=Replacement screw base adapter (one included with unit)

RL56CLIP=Replacement kit of 5" and 6" Friction Clips for retrofitting into an existing housing without torsion spring receiving brackets. (One set of clips included with the unit.)

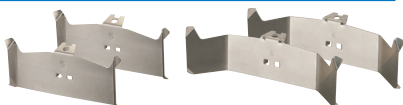
OT400P=Oversize Flat White Metal Trim Ring, 6" I.D. x 9-1/4" O.D. (ring slips behind RA56 ring in stepped configuration)

OT403P=Oversize White Plastic Trim Ring, 6" I.D. x 8" O.D. (ring slips behind RA56 ring in stepped configuration)

TRM690WH=Oversize Matte White Metal Trim Ring. Designed for RA56 ring to inset into oversize ring for an even (non-stepped) trim surface.

Friction Clips

5" and 6" friction clips for retrofitting into an existing housing without torsion spring receiving brackets.



RA56 Energy Data	NFL	VWFL
Max. Lumens (3000K)	640	670
Input Voltage	120V	
Input Frequency	50/60 Hz	
Input Power	10W	
Input Current	0.85 A	
Power Factor	>0.90	
THD	<20%	
EMI/RFI	FCC Title 47 CFR, Part 15, Class B (Consumer)	
Sound Rating	Class A	
Minimum Starting Temp	-30°C (-22°F)	



^A Savings are over the life of the Halo RA56 luminaire.

Energy savings: \$426

Replacement lamp savings: \$100

Savings based on \$0.155 per kilowatt hour, average six hours use per day, 50,000 hours of lamp usage, and 65W BR30 lamp lumen equivalent.



90 CRI



Refer to ENERGY STAR® Certified Products List. Can be used to comply with California Title 24 High Efficacy requirements. Certified to California Title 20 Appliance Efficiency Database.

RL4 / RA4 Housing Compatibility

RL4 and RA4 LED are rated for installation in 4" HALO®, All-Pro™ and other housings.

Halo LED¹ H995ICAT, H995RICAT, H245ICAT, H245RICAT

Halo H99ICAT, H99RTAT, H99TAT

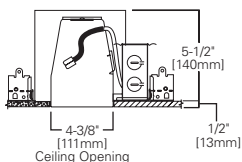
All-Pro ET400ATSB, ET400RATSB, EI400ATSB

Other Brands The RL/RA Series is cULus Listed or UL Classified for use with any 4" diameter recessed housing constructed of steel or aluminum with an internal volume that exceeds 62.3 in³ in addition to those noted above.

1 Halo LED housings are non-screw base, high-efficacy code compliant.

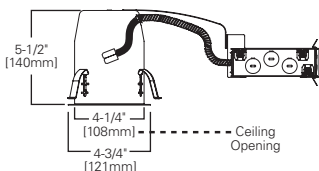
H995ICAT

4" LED, IC, AIR-TITE,
New Construction Housing



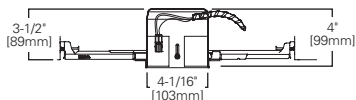
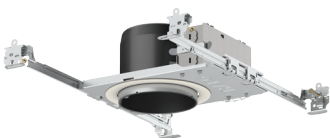
H995RICAT

4" LED, IC, AIR-TITE,
Remodel Housing



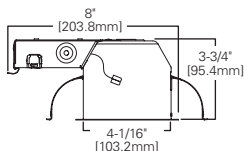
H245ICAT

4" LED, Ultra-shallow, IC, AIR-TITE,
New Construction Housing



H245RICAT

4" LED, Ultra-shallow, IC, AIR-TITE,
Remodel Housing



Powering Business Worldwide

RL56 / RA56 Housing Compatibility

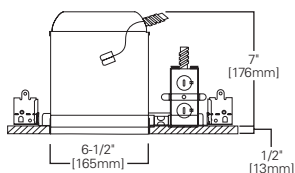
RL56 and RA56 LED are rated for installation in 5" and 6" HALO®, All-Pro™ and other housings.

Halo 5" LED¹	H550ICAT, H550RICAT
Halo 6" LED¹	H750ICAT, H750RICAT, H750T, H750RINTD010, H750TCP, H2750ICAT, H2750RICAT
Halo 5"	H5ICAT, H5RICAT, H5ICATNB, H5T, H5RT, H25ICAT, H25ICATNB, E5TAT, E5RTAT, H5TNB, E5TATNB, E5ICAT, E5RICAT, E5ICATNB
Halo 6"	H7ICAT, H7RICAT, H7ICT, H7RICT, H7ICATNB, H7ICTNB, H7T, H7RT, H7TNB, H7TCP, H7UICAT, H7UICATNB, H27ICAT, H27RICAT, H27T, H27RT, E7ICAT, E7RICAT, E27ICAT, E27RICAT, E7ICATNB, E7TAT, E7RTAT, E7TATNB, E27TAT, E27RTAT
Halo LED Retrofit	ML7BXRFK, ML7E26RFK
All-Pro 5"	EI500AT, EI500RAT, ET500, ET500R
All-Pro 6"	EI700, EI700AT, EI700ATNB, EI700U, EI700UAT, EI700NB, EI700R, EI700RAT, ET700, ET700R, EI2700, EI2700AT, EI2700R, ET2700, ET2700R
Other Brands*	The RL/RA Series is cULus Listed or UL Classified for use with any 5"/6" diameter recessed housing constructed of steel or aluminum with an internal volume that exceeds 107.9 in ³ in addition to those noted above.

*When using RL56 torsion springs or with RA56 torsion springs for retrofit some housings will not have torsion spring receiver brackets –use Halo ML7RAB retrofit adapter band (order separately)

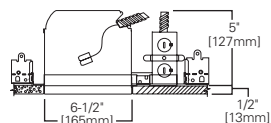
H750ICAT

6" LED, IC, AIR-TITE, Standard New Construction Housing



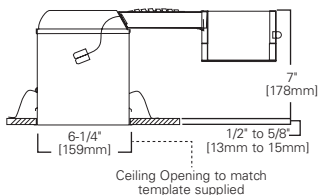
H2750ICAT

6" LED, IC, AIR-TITE, Shallow New Construction Housing



H750RICAT

6" LED, IC, AIR-TITE, Standard Remodel Housing



Product and Photometric Data

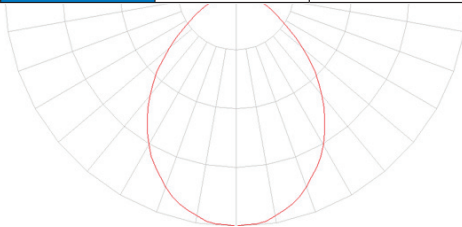
RL4 and RL56 - 600 Series

Cat No.	CRI	CCT	Lumens	Power (W)	LPW
RL460WH927PK	92	2700	530	8.0	66
RL460WH930PK	90	3000	570	8.0	71
RL460WH935PK	92	3500	550	8.0	69
RL460WH940PK	92	4000	560	8.0	67
RL460WH950PK	92	5000	600	8.2	73

RL560WH6927	92	2700	630	8.7	72
RL560WH6930	91	3000	645	8.8	73
RL560WH6935	92	3500	650	8.9	73
RL560WH6940	92	4000	690	9.2	75
RL560WH6950	90	5000	715	8.9	80

RL56-600 Series Photometric*

RL560WH6930		
Luminaire lumens		645
Input watts		8.8
LER (LPW)		73.3
Spacing Criteria	0-180	1.14
	90-270	1.14
	Diagonal	1.22
Beam angle (degrees)		87.8
Field angle (degrees)		139
Zonal lumen	Lumens	% Lumens
0-30	240	37.2
0-40	375	58.2
0-60	577	89.4
0-90	645	100

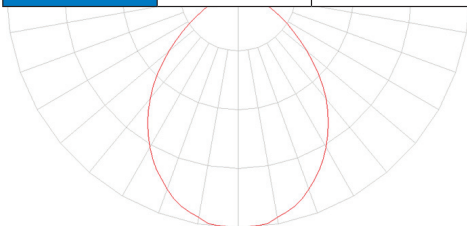


RL56 - 900 SERIES

Cat No.	CRI	CCT	Lumens	Power (W)	LPW
RL560WH9927	92	2700	940	12.6	75
RL560WH9930	91	3000	930	12.8	73
RL560WH9935	92	3500	940	12.7	74
RL560WH9940	90	4000	1000	13.2	76
RL560WH9950	90	5000	1015	12.9	79

RL56-900 Series Photometric*

RL560WH9830		
Luminaire lumens		930
Input watts		12.8
LER (LPW)		72.7
Spacing Criteria	0-180	1.16
	90-270	1.16
	Diagonal	1.22
Beam angle (degrees)		88.9
Field angle (degrees)		140
Zonal lumen	Lumens	% Lumens
0-30	341	36.7
0-40	535	57.5
0-60	829	89.1
0-90	930	100



- Downlight distribution
- Maximum spacing criteria
- Optimized design for general downlighting
- Exceeds 86% of light between 0-60° cone-of-light zone
- ENERGY STAR® and California Title 24 - zonal and efficacy requirements

*Additional photometric ies files available online.

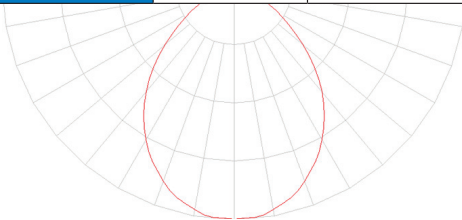
Product and Photometric Data

RL56 - 1200 SERIES

Cat No.	CRI	CCT	Lumens	Power (W)	LPW
RL560WH12927	90	2700	1230	17.3	71
RL560WH12930	90	3000	1240	17.6	70
RL560WH12935	90	3500	1280	17.7	72
RL560WH12940	90	4000	1330	18	74
RL560WH12950	90	5000	1325	17.4	76

RL56-1200 Series Photometric*

RL560WH12930		
Luminaire lumens		1240
Input watts		17.6
LER (LPW)		70.5
Spacing Criteria	0-180	1.16
	90-270	1.16
	Diagonal	1.22
Beam angle (degrees)		89.1
Field angle (degrees)		140.1
Zonal lumen	Lumens	% Lumens
0-30	454	36.6
0-40	714	57.6
0-60	1105	89.1
0-90	1240	100

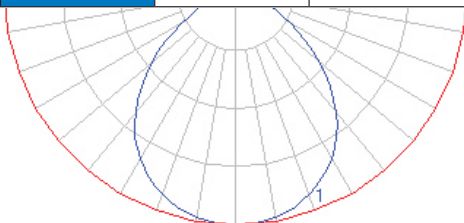


RA4 and RA56 - Very Wide Flood Series

Cat No.	CRI	CCT	Lumens	Power (W)	LPW
RA406927WH	90	2700	600	10	60
RA406930WH	90	3000	615	10	62
RA5606927WH	90	2700	645	10	64
RA5606930WH	90	3000	670	10	67

RA56 - Very Wide Flood Series Photometric*

RA5606930WH		
Luminaire lumens		670
Input watts		10
LER (LPW)		67
Spacing Criteria	0-180	1.24
	90-270	1.24
	Diagonal	1.3
Beam angle (degrees)		97
Field angle (degrees)		147
Zonal lumen	Lumens	% Lumens
0-30	222	33%
0-40	358	53%
0-60	582	87%
0-90	1030	100%



*Additional photometric ies files available online.

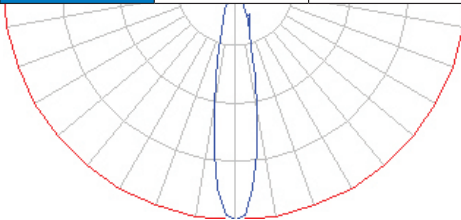
Product and Photometric Data

RA4 and RA56 - Narrow Flood Series

Cat No.	CRI	CCT	Lumens	Power (W)	LPW
RA406927NFLWH	90	2700	640	10	64
RA406930NFLWH	90	3000	640	10	64
RA5606927NFLWH	90	2700	630	10	63
RA5606930NFLWH	90	3000	640	10	64

RA56 - Narrow Flood Series Photometric*

RA5606930NFLWH		
Luminaire lumens		640
Input watts		10
LER (LPW)		64
Spacing Criteria	0-180	0.38
	90-270	0.38
	Diagonal	0.38
Beam angle (degrees)		21
Field angle (degrees)		48
Zonal lumen	Lumens	% Lumens
0-30	542	85%
0-40	590	92%
0-60	627	98%
0-90	640	100%



*Additional photometric ies files available online.

Lighting Control Solution

Eaton dimmers offer versatile options to set the mood and reduce energy consumption. These compatible LED dimmers are ideal for both residential and light commercial applications and are compatible with decorator (screwless) style devices and wallplates. Refer to www.eaton.com for additional information.



Decorator
(DAL06P)



Slide
(SAL06P)



Toggle
(TAL06P)



Eaton

1121 Highway 74 South
Peachtree City, GA 30269
P: 770-486-4800
www.eaton.com/lighting

Canada Sales
5925 McLaughlin Road
Mississauga, Ontario L5R 1B8
P: 905-501-3000
F: 905-501-3172

Our Lighting Product Lines

Halo
Halo Commercial
Portfolio
IRiS
RSA
Metalux
Corelite
Neo-Ray
Fail-Safe
MWS
Ametrix
Shaper
io
Lumark
McGraw-Edison
Invue
Lumière
Streetworks
AtLite
Sure-Lites

Our Controls Product Lines

Greengate
iLumin
Zero 88
Fifth Light Technology
iLight (International Only)

Eaton

1121 Highway 74 South
Peachtree City, GA 30269
P: 770-486-4800
www.eaton.com/lighting

© 2017 Eaton
All Rights Reserved
Printed in USA
Publication No. BR518028EN
February 2017

Products, specifications and
compliances are subject to
change without notice.

Eaton is a registered trademark.

All other trademarks are property
of their respective owners.



Powering Business Worldwide