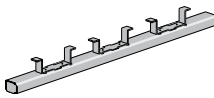


POWER-STRUT® Part No. Std Wt./ List Price
& Length Fin. Qty 100 per 100 ft.

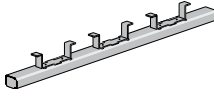
PS 449

Continuous Concrete Insert
With Closure Strip and End Cap
"A" Installed (CS/EC) 1 5/8" x 1" x 12 Ga.

		per 100 pcs			
	PS 449 CS/EC 10	PG	20	1519	\$9281.42
	PS 449 CS/EC 10	PL	20	1519	\$8594.28
	PS 449 CS/EC 20	PG	20	3026	\$18564.99
	PS 449 CS/EC 20	PL	20	3026	\$17188.42

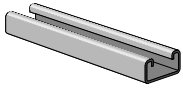
PS 449

Continuous Concrete Insert
Without Closure Strip and End Cap

		per 100 pcs			
	PS 449 W/O 10	PG	20	1507	\$7894.92
	PS 449 W/O 10	PL	20	1507	\$7312.21
	PS 449 W/O 20	PG	20	3014	\$15789.84
	PS 449 W/O 20	PL	20	3014	\$15009.16

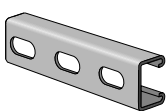
PS 500

1 5/8" x 13/16" x 14 Ga. Channel

	PS 500 10	GR	500'	97	\$363.72
	PS 500 10	PG	500'	97	\$371.87
	PS 500 10	AL	500'	45	P.O.A.
	PS 500 10	PL	500'	97	\$332.23
	PS 500 20	GR	500'	97	\$363.72
	PS 500 20	PG	500'	97	\$371.87
	PS 500 20	AL	500'	45	P.O.A.
	PS 500 20	PL	500'	97	\$332.23

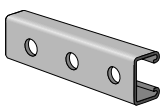
PS 500 EH

1 5/8" x 13/16" x 14 Ga. Channel
With 1 1/8" x 9/16" Elongated Holes On 2" Centers

	PS 500 EH 10	GR	500'	87	\$421.71
	PS 500 EH 10	PG	500'	87	\$427.95
	PS 500 EH 10	AL	500'	39	P.O.A.
	PS 500 EH 10	PL	500'	87	\$408.53
	PS 500 EH 20	GR	500'	87	\$421.71
	PS 500 EH 20	PG	500'	87	\$427.95
	PS 500 EH 20	AL	500'	39	P.O.A.
	PS 500 EH 20	PL	500'	87	\$408.53

PS 500 H

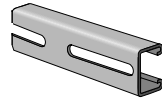
1 5/8" x 13/16" x 14 Ga. Channel
With 9/16" Holes On 1 7/8" Centers

	PS 500 H 10	GR	500'	87	\$448.32
	PS 500 H 10	PG	500'	87	\$451.97
	PS 500 H 10	AL	500'	40	P.O.A.
	PS 500 H 10	PL	500'	87	\$431.35
	PS 500 H 20	GR	500'	87	\$448.32
	PS 500 H 20	PG	500'	87	\$451.97
	PS 500 H 20	AL	500'	40	P.O.A.
	PS 500 H 20	PL	500'	87	\$431.35

POWER-STRUT® Part No. Std Wt./ List Price
& Length Fin. Qty 100 per 100 ft.

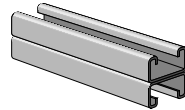
PS 500 S

1 5/8" x 13/16" x 14 Ga. Channel
With 13/32" x 3" Slots On 4" Centers

	PS 500 S 10	GR	500'	87	\$443.15
	PS 500 S 10	PG	500'	87	\$450.63
	PS 500 S 10	AL	500'	39	P.O.A.
	PS 500 S 10	PL	500'	87	\$431.35
	PS 500 S 10	GR	500'	87	\$443.15
	PS 500 S 10	PG	500'	87	\$450.63
	PS 500 S 10	AL	500'	39	P.O.A.
	PS 500 S 10	PL	500'	87	\$431.35

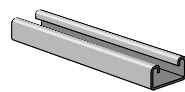
PS 500 2T3

Welded Channel
Two Pcs. PS 500 Welded Back to Back 1 5/8" x 1 5/8" x 14 Ga.

	PS 500 2T3 10	GR	250'	194	\$949.43
	PS 500 2T3 10	PG	250'	194	\$1033.08
	PS 500 2T3 10	PL	250'	194	\$911.30
	PS 500 2T3 20	GR	300'	194	\$949.43
	PS 500 2T3 20	PG	300'	194	\$1033.08
	PS 500 2T3 20	PL	300'	194	\$911.30

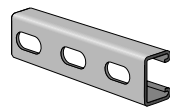
PS 520

1 5/8" x 13/16" x 12 Ga. Channel

	PS 520 10	GR	250'	128	\$487.55
	PS 520 10	PG	250'	128	\$495.84
	PS 520 10	PL	250'	128	\$456.87
	PS 520 20	GR	300'	128	\$487.55
	PS 520 20	PG	300'	128	\$495.84
	PS 520 20	PL	300'	128	\$456.87

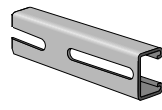
PS 520 EH

1 5/8" x 13/16" x 12 Ga. Channel
With 1 1/8" x 9/16" Elongated Holes On 2" Centers

	PS 520 EH 10	GR	500'	123	\$561.01
	PS 520 EH 10	PG	500'	123	\$566.84
	PS 520 EH 10	PL	500'	123	\$546.20
	PS 520 EH 20	GR	500'	123	\$561.01
	PS 520 EH 20	PG	500'	123	\$566.84
	PS 520 EH 20	PL	500'	123	\$546.20

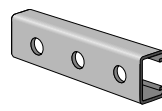
PS 520 S

1 5/8" x 13/16" x 12 Ga. Channel
With 13/32" x 3" Slots On 4" Centers

	PS 520 S 10	GR	500'	118	\$571.32
	PS 520 S 10	PG	500'	118	\$592.50
	PS 520 S 10	PL	500'	118	\$570.10
	PS 520 S 20	GR	500'	118	\$571.32
	PS 520 S 20	PG	500'	118	\$592.50
	PS 520 S 20	PL	500'	118	\$570.10

PS 520 H

1 5/8" x 13/16" x 12 Ga. Channel
With 9/16" Holes On 1 7/8" Centers

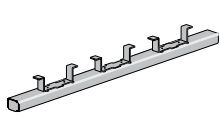
	PS 520 H 10	GR	500'	123	\$590.88
	PS 520 H 10	PG	500'	123	\$593.60
	PS 520 H 10	PL	500'	123	\$570.10
	PS 520 H 20	GR	500'	123	\$590.88
	PS 520 H 20	PG	500'	123	\$593.60
	PS 520 H 20	PL	500'	123	\$570.10



Part No. Std Wt./ List Price
& Length Fin. Qty 100 per 100 ft.

PS 449

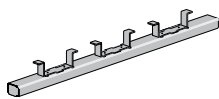
Continuous Concrete Insert
With Closure Strip and End Cap
"A" Installed (CS/EC) 1 5/8" x 1" x 12 Ga.



					per 100 pcs
PS 449 CS/EC 10	PG	20	1519	\$9281.42	
PS 449 CS/EC 10	PL	20	1519	\$8594.28	
PS 449 CS/EC 20	PG	20	3026	\$18564.99	
PS 449 CS/EC 20	PL	20	3026	\$17188.42	

PS 449

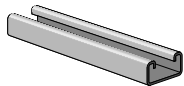
Continuous Concrete Insert
Without Closure Strip and End Cap



					per 100 pcs
PS 449 W/O 10	PG	20	1507	\$7894.92	
PS 449 W/O 10	PL	20	1507	\$7312.21	
PS 449 W/O 20	PG	20	3014	\$15789.84	
PS 449 W/O 20	PL	20	3014	\$15009.16	

PS 500

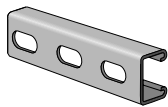
1 5/8" x 13/16" x 14 Ga. Channel



PS 500 10	GR	500'	97	\$363.72
PS 500 10	PG	500'	97	\$371.87
PS 500 10	AL	500'	45	P.O.A.
PS 500 10	PL	500'	97	\$332.23
PS 500 20	GR	500'	97	\$363.72
PS 500 20	PG	500'	97	\$371.87
PS 500 20	AL	500'	45	P.O.A.
PS 500 20	PL	500'	97	\$332.23

PS 500 EH

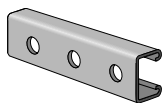
1 5/8" x 13/16" x 14 Ga. Channel
With 1 1/8" x 9/16" Elongated Holes On 2" Centers



PS 500 EH 10	GR	500'	87	\$421.71
PS 500 EH 10	PG	500'	87	\$427.95
PS 500 EH 10	AL	500'	39	P.O.A.
PS 500 EH 10	PL	500'	87	\$408.53
PS 500 EH 20	GR	500'	87	\$421.71
PS 500 EH 20	PG	500'	87	\$427.95
PS 500 EH 20	AL	500'	39	P.O.A.
PS 500 EH 20	PL	500'	87	\$408.53

PS 500 H

1 5/8" x 13/16" x 14 Ga. Channel
With 9/16" Holes On 1 7/8" Centers



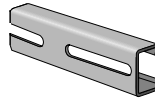
PS 500 H 10	GR	500'	87	\$448.32
PS 500 H 10	PG	500'	87	\$451.97
PS 500 H 10	AL	500'	40	P.O.A.
PS 500 H 10	PL	500'	87	\$431.35
PS 500 H 20	GR	500'	87	\$448.32
PS 500 H 20	PG	500'	87	\$451.97
PS 500 H 20	AL	500'	40	P.O.A.
PS 500 H 20	PL	500'	87	\$431.35



Part No. Std Wt./ List Price
& Length Fin. Qty 100 per 100 ft.

PS 500 S

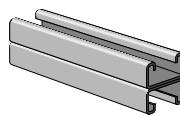
1 5/8" x 13/16" x 14 Ga. Channel
With 13/32" x 3" Slots On 4" Centers



PS 500 S 10	GR	500'	87	\$443.15
PS 500 S 10	PG	500'	87	\$450.63
PS 500 S 10	AL	500'	39	P.O.A.
PS 500 S 10	PL	500'	87	\$431.35
PS 500 S 10	GR	500'	87	\$443.15
PS 500 S 10	PG	500'	87	\$450.63
PS 500 S 10	AL	500'	39	P.O.A.
PS 500 S 10	PL	500'	87	\$431.35

PS 500 2T3

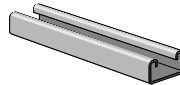
Welded Channel
Two Pcs. PS 500 Welded Back to Back 1 5/8" x 1 5/8" x 14 Ga.



PS 500 2T3 10	GR	250'	194	\$949.43
PS 500 2T3 10	PG	250'	194	\$1033.08
PS 500 2T3 10	PL	250'	194	\$911.30
PS 500 2T3 20	GR	300'	194	\$949.43
PS 500 2T3 20	PG	300'	194	\$1033.08
PS 500 2T3 20	PL	300'	194	\$911.30

PS 520

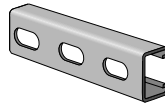
1 5/8" x 13/16" x 12 Ga. Channel



PS 520 10	GR	250'	128	\$487.55
PS 520 10	PG	250'	128	\$495.84
PS 520 10	PL	250'	128	\$456.87
PS 520 20	GR	300'	128	\$487.55
PS 520 20	PG	300'	128	\$495.84
PS 520 20	PL	300'	128	\$456.87

PS 520 EH

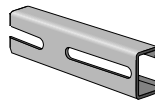
1 5/8" x 13/16" x 12 Ga. Channel
With 1 1/8" x 9/16" Elongated Holes On 2" Centers



PS 520 EH 10	GR	500'	123	\$561.01
PS 520 EH 10	PG	500'	123	\$566.84
PS 520 EH 10	PL	500'	123	\$546.20
PS 520 EH 20	GR	500'	123	\$561.01
PS 520 EH 20	PG	500'	123	\$566.84
PS 520 EH 20	PL	500'	123	\$546.20

PS 520 S

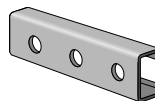
1 5/8" x 13/16" x 12 Ga. Channel
With 13/32" x 3" Slots On 4" Centers



PS 520 S 10	GR	500'	118	\$571.32
PS 520 S 10	PG	500'	118	\$592.50
PS 520 S 10	PL	500'	118	\$570.10
PS 520 S 20	GR	500'	118	\$571.32
PS 520 S 20	PG	500'	118	\$592.50
PS 520 S 20	PL	500'	118	\$570.10

PS 520 H

1 5/8" x 13/16" x 12 Ga. Channel
With 9/16" Holes On 1 7/8" Centers



PS 520 H 10	GR	500'	123	\$590.88
PS 520 H 10	PG	500'	123	\$593.60
PS 520 H 10	PL	500'	123	\$570.10
PS 520 H 20	GR	500'	123	\$590.88
PS 520 H 20	PG	500'	123	\$593.60
PS 520 H 20	PL	500'	123	\$570.10