

5F Reducers, Couplings and Plugs

Cl. I, Div. 1 & 2, Groups A†, B, C, D
 Cl. II, Div. 1, Groups E, F, G
 Cl. II, Div. 2, Groups F, G
 Cl. III

Explosionproof
 Dust-Ignitionproof

5F

Applications:

- RE and REC reducers are used in threaded heavy wall conduit systems.
- RE reduces conduit hubs to a smaller size.
- REA adapters enlarge drilled and tapped openings by 1 NPT size.
- REC connects two different sizes of conduit together or is used to replace a coupling and reducer in an installation.
- PLG plugs are used for closing threaded conduit hubs.

Features:

RE reducers have:

- Integral bushing which prevents damage to wires

- Full, clean cut tapered threads

REC reducers have:

- Integral bushings in both ends which prevents damage to wires
- Funnel shaped interior to guide the wires from large to small conduit, making it easy to pull wire

REA adapters have:

- Smooth integral bushing to protect wire insulation

- Knurled body for easy wrenching

PLG plugs:

- Have clean tapered threads
- Are available in two styles, flush (recessed), or square head type

Certifications and Compliances:

- NEC/CEC:
 - Class I, Division 1 & 2, Groups A, B, C, D
 - Class II, Division 1, Groups E, F, G
 - Class II, Division 2, Groups F, G
 - Class III

(see listings for specific Cat. Nos. suitable for Groups A or B)

- UL Standard: 1203
- CSA Standard: C22.2 No. 30

Standard Materials:

- RE reducers – RE1108 through RE54 in steel; all others in *Feraloy*® iron alloy
- REA adapters – steel
- REC reducers – REC21 and REC32 in steel; all others in *Feraloy* iron alloy
- PLG plugs – Recessed: PLG28-PLG3: steel, PLG4-PLG10: grey iron alloy; Square Head: PLG15-PLG55: steel, PLG65-PLG105: grey iron alloy

Standard Finishes:

- *Feraloy* iron alloy – electrogalvanized and aluminum acrylic paint
- Steel – electrogalvanized with chromate treatment

Options:

| Description | Suffix |
|----------------------|--------|
| Copper-free aluminum | SA |

RE



| Size | Cat. # |
|---------------|---------|
| 1/2 - 1/8 | RE1108* |
| 1/2 - 1/4 | RE1208* |
| 1/2 - 3/8 | RE1308 |
| 3/4 - 1/2 | RE21† |
| 1 - 1/2 | RE31† |
| 1 - 3/4 | RE32† |
| 1 1/4 - 1/2 | RE41† |
| 1 1/4 - 3/4 | RE42† |
| 1 1/4 - 1 | RE43† |
| 1 1/2 - 1/2 | RE51† |
| 1 1/2 - 3/4 | RE52† |
| 1 1/2 - 1 | RE53† |
| 1 1/2 - 1 1/4 | RE54† |
| 2 - 1/2 | RE61† |
| 2 - 3/4 | RE62† |
| 2 - 1 | RE63† |
| 2 - 1 1/4 | RE64† |
| 2 - 1 1/2 | RE65† |
| 2 1/2 - 1 | RE73† |
| 2 1/2 - 1 1/4 | RE74† |
| 2 1/2 - 1 1/2 | RE75† |
| 2 1/2 - 2 | RE76† |
| 3 - 1 | RE83† |
| 3 - 1 1/4 | RE84† |
| 3 - 1 1/2 | RE85† |
| 3 - 2 | RE86† |
| 3 - 2 1/2 | RE87† |
| 3 1/2 - 2 | RE96† |
| 3 1/2 - 2 1/2 | RE97† |
| 3 1/2 - 3 | RE98† |
| 4 - 2 | RE106† |
| 4 - 2 1/2 | RE107† |
| 4 - 3 | RE108† |
| 4 - 3 1/2 | RE109† |
| 5 - 4 | RE01210 |
| 6 - 5 | RE01412 |

REC



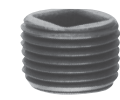
| Large Hub Size | Small Hub Size | Cat. # |
|----------------|----------------|-----------|
| 3/4 | 1/2 | REC21† |
| 1 | 1/2 | REC31† |
| 1 | 3/4 | REC32 |
| 1 1/4 | 3/4 | REC42 |
| 1 1/4 | 1 | REC43 |
| 1 1/2 | 3/4 | REC52 |
| 1 1/2 | 1 | REC53 |
| 1 1/2 | 1 1/4 | REC54 |
| 2 | 3/4 | REC602 |
| 2 | 1 | REC603 |
| 2 | 1 1/4 | REC604 |
| 2 | 1 1/2 | REC605 |
| 2 1/2 | 1 1/2 | REC75 |
| 3 | 2 | REC86 |
| 3 1/2 | 2 1/2 | REC97* |
| 4 | 3 | REC108* |
| 5 | 4 | REC01210* |

REA



| Male Hub Size | Female Hub Size | Cat. # |
|---------------|-----------------|--------|
| 1/2 | 3/4 | REA12† |
| 3/4 | 1 | REA23† |
| 1 | 1 1/4 | REA34† |

PLG



Recessed



Square Head

Recessed

| Size | Cat. # |
|-------|--------|
| 1/4 | PLG28† |
| 1/2 | PLG1† |
| 3/4 | PLG2† |
| 1 | PLG3† |
| 1 1/4 | PLG4 |
| 1 1/2 | PLG5 |
| 2 | PLG6 |
| 2 1/2 | PLG7 |
| 3 | PLG8 |
| 3 1/2 | PLG9 |
| 4 | PLG10 |

Square Head

| Size | Cat. # |
|-------|--------|
| 1/2 | PLG15† |
| 3/4 | PLG25† |
| 1 | PLG35† |
| 1 1/4 | PLG45 |
| 1 1/2 | PLG55 |
| 2 | PLG65 |
| 2 1/2 | PLG75 |
| 3 | PLG85 |
| 3 1/2 | PLG95 |
| 4 | PLG105 |

*Not available in aluminum.

†Suitable for use in Class I, Groups A and B areas.

5F Reducers, Couplings and Plugs

Cl. I, Div. 1 & 2, Groups A†, B, C, D
 Cl. II, Div. 1, Groups E, F, G
 Cl. II, Div. 2, Groups F, G
 Cl. III

Explosionproof
 Dust-Ignitionproof

5F

Applications:

- RE and REC reducers are used in threaded heavy wall conduit systems.
- RE reduces conduit hubs to a smaller size.
- REA adapters enlarge drilled and tapped openings by 1 NPT size.
- REC connects two different sizes of conduit together or is used to replace a coupling and reducer in an installation.
- PLG plugs are used for closing threaded conduit hubs.

Features:

RE reducers have:

- Integral bushing which prevents damage to wires

- Full, clean cut tapered threads

REC reducers have:

- Integral bushings in both ends which prevents damage to wires
- Funnel shaped interior to guide the wires from large to small conduit, making it easy to pull wire

REA adapters have:

- Smooth integral bushing to protect wire insulation

- Knurled body for easy wrenching

PLG plugs:

- Have clean tapered threads
- Are available in two styles, flush (recessed), or square head type

Certifications and Compliances:

- NEC/CEC:
 - Class I, Division 1 & 2, Groups A, B, C, D
 - Class II, Division 1, Groups E, F, G
 - Class II, Division 2, Groups F, G
 - Class III

(see listings for specific Cat. Nos. suitable for Groups A or B)

- UL Standard: 1203
- CSA Standard: C22.2 No. 30

Standard Materials:

- RE reducers – RE1108 through RE54 in steel; all others in *Feraloy*® iron alloy
- REA adapters – steel
- REC reducers – REC21 and REC32 in steel; all others in *Feraloy* iron alloy
- PLG plugs – Recessed: PLG28-PLG3: steel, PLG4-PLG10: grey iron alloy; Square Head: PLG15-PLG55: steel, PLG65-PLG105: grey iron alloy

Standard Finishes:

- *Feraloy* iron alloy – electrogalvanized and aluminum acrylic paint
- Steel – electrogalvanized with chromate treatment

Options:

| Description | Suffix |
|----------------------|--------|
| Copper-free aluminum | SA |

RE



| Size | Cat. # |
|---------------|---------|
| 1/2 - 1/8 | RE1108* |
| 1/2 - 1/4 | RE1208* |
| 1/2 - 3/8 | RE1308 |
| 3/4 - 1/2 | RE21† |
| 1 - 1/2 | RE31† |
| 1 - 3/4 | RE32† |
| 1 1/4 - 1/2 | RE41† |
| 1 1/4 - 3/4 | RE42† |
| 1 1/4 - 1 | RE43† |
| 1 1/2 - 1/2 | RE51† |
| 1 1/2 - 3/4 | RE52† |
| 1 1/2 - 1 | RE53† |
| 1 1/2 - 1 1/4 | RE54† |
| 2 - 1/2 | RE61† |
| 2 - 3/4 | RE62† |
| 2 - 1 | RE63† |
| 2 - 1 1/4 | RE64† |
| 2 - 1 1/2 | RE65† |
| 2 1/2 - 1 | RE73† |
| 2 1/2 - 1 1/4 | RE74† |
| 2 1/2 - 1 1/2 | RE75† |
| 2 1/2 - 2 | RE76† |
| 3 - 1 | RE83† |
| 3 - 1 1/4 | RE84† |
| 3 - 1 1/2 | RE85† |
| 3 - 2 | RE86† |
| 3 - 2 1/2 | RE87† |
| 3 1/2 - 2 | RE96† |
| 3 1/2 - 2 1/2 | RE97† |
| 3 1/2 - 3 | RE98† |
| 4 - 2 | RE106† |
| 4 - 2 1/2 | RE107† |
| 4 - 3 | RE108† |
| 4 - 3 1/2 | RE109† |
| 5 - 4 | RE01210 |
| 6 - 5 | RE01412 |

REC



| Large Hub Size | Small Hub Size | Cat. # |
|----------------|----------------|-----------|
| 3/4 | 1/2 | REC21† |
| 1 | 1/2 | REC31† |
| 1 | 3/4 | REC32 |
| 1 1/4 | 3/4 | REC42 |
| 1 1/4 | 1 | REC43 |
| 1 1/2 | 3/4 | REC52 |
| 1 1/2 | 1 | REC53 |
| 1 1/2 | 1 1/4 | REC54 |
| 2 | 3/4 | REC602 |
| 2 | 1 | REC603 |
| 2 | 1 1/4 | REC604 |
| 2 | 1 1/2 | REC605 |
| 2 1/2 | 1 1/2 | REC75 |
| 3 | 2 | REC86 |
| 3 1/2 | 2 1/2 | REC97* |
| 4 | 3 | REC108* |
| 5 | 4 | REC01210* |

REA



| Male Hub Size | Female Hub Size | Cat. # |
|---------------|-----------------|--------|
| 1/2 | 3/4 | REA12† |
| 3/4 | 1 | REA23† |
| 1 | 1 1/4 | REA34† |

PLG



Recessed



Square Head

Recessed

| Size | Cat. # |
|-------|--------|
| 1/4 | PLG28† |
| 1/2 | PLG1† |
| 3/4 | PLG2† |
| 1 | PLG3† |
| 1 1/4 | PLG4 |
| 1 1/2 | PLG5 |
| 2 | PLG6 |
| 2 1/2 | PLG7 |
| 3 | PLG8 |
| 3 1/2 | PLG9 |
| 4 | PLG10 |

Square Head

| Size | Cat. # |
|-------|--------|
| 1/2 | PLG15† |
| 3/4 | PLG25† |
| 1 | PLG35† |
| 1 1/4 | PLG45 |
| 1 1/2 | PLG55 |
| 2 | PLG65 |
| 2 1/2 | PLG75 |
| 3 | PLG85 |
| 3 1/2 | PLG95 |
| 4 | PLG105 |

*Not available in aluminum.
 †Suitable for use in Class I, Groups A and B areas.