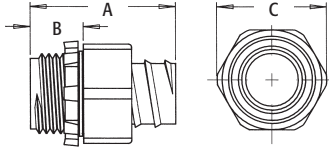


Screw-On Straight Non-Metallic Connectors

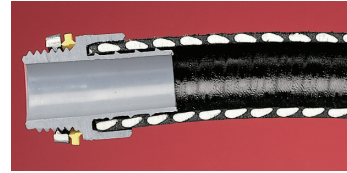


For use with non-metallic liquid-tight conduit, type B only. Produced from UV rated plastic for long outdoor life.

| CATALOG NUMBER | UPC/DCI/NAED MFG #018997 | TRADE SIZE | KO SIZE | UNIT PKG | STD PKG | DIM A | DIM B | DIM C |
|----------------|--------------------------|------------|---------|----------|---------|-------|-------|-------|
| NMSC38 | 21005 | 3/8 | 1/2 | 25 | 100 | 1.350 | .535 | 1.250 |
| NMSC50 | 21000 | 1/2 | 1/2 | 25 | 100 | 1.410 | .535 | 1.228 |
| NMSC75 | 21010 | 3/4 | 3/4 | 25 | 100 | 1.546 | .546 | 1.594 |
| NMSC100 | 14950 | 1 | 1 | 5 | 25 | 1.810 | .650 | 1.750 |

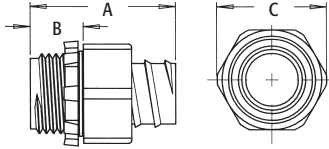
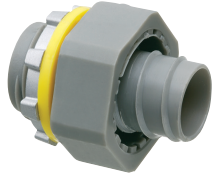
Add suffix "BL" to Catalog # when ordering in black, for example NMSC50BL.

PATENTED.



Conduit threads onto ferrule and up inside the outer body. The inside taper squeezes down on the outside of conduit for a superior liquid-tight seal. The cut portion of the conduit does not show, giving a more attractive finished appearance. Also for use with flexible non-metallic tubing. These connectors screw on easily by hand and are removable with pliers.

Screw-On Straight Non-Metallic Connectors

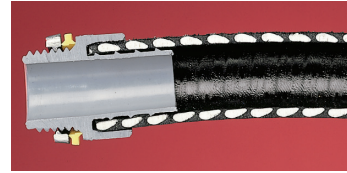


For use with non-metallic liquid-tight conduit, type B only. Produced from UV rated plastic for long outdoor life.

| CATALOG NUMBER | UPC/DCI/NAED MFG #018997 | TRADE SIZE | KO SIZE | UNIT PKG | STD PKG | DIM A | DIM B | DIM C |
|----------------|--------------------------|------------|---------|----------|---------|-------|-------|-------|
| NMSC38 | 21005 | 3/8 | 1/2 | 25 | 100 | 1.350 | .535 | 1.250 |
| NMSC50 | 21000 | 1/2 | 1/2 | 25 | 100 | 1.410 | .535 | 1.228 |
| NMSC75 | 21010 | 3/4 | 3/4 | 25 | 100 | 1.546 | .546 | 1.594 |
| NMSC100 | 14950 | 1 | 1 | 5 | 25 | 1.810 | .650 | 1.750 |

Add suffix "BL" to Catalog # when ordering in black, for example NMSC50BL.

PATENTED.



Conduit threads onto ferrule and up inside the outer body. The inside taper squeezes down on the outside of conduit for a superior liquid-tight seal. The cut portion of the conduit does not show, giving a more attractive finished appearance. Also for use with flexible non-metallic tubing. These connectors screw on easily by hand and are removable with pliers.