



SB-1



SB-1H



SB-2



SB-3



SB-4



LVP-2



SB-2 with LVP installed

| SLIDERBOX® Adjustable Boxes | Cu. In. Volume | Catalog Number | Component Description   | Exterior Dimensions |         |        | UPC# 85339 | Std. Pkg. Qty. | Std. Wt. (lb.) |
|-----------------------------|----------------|----------------|---|---------------------|---------|--------|------------|----------------|----------------|
|                             |                |                |   | D                   | W       | H      |            |                |                |
|                             | 23.0           | SB-1           | Single gang adjustable outlet box, internal stud screws for use in wood or steel non-load-bearing studs 25 gauge or lighter, ½" knockout  | 3-9/16              | 2-5/16  | 3-¾    | 94500      | 48             | 14             |
|                             | 23.0           | SB-1H          | Single gang adjustable outlet box, <b>horizontal mount</b> , internal stud screws for use in wood or steel non-load-bearing studs 25 gauge or lighter, ½" knockout  | 3-9/16              | 3-¾     | 2-5/16 | 94503      | 12             | 4              |
|                             | 42.0           | SB-2           | Two-gang adjustable outlet box, internal stud screws for use in wood or steel non-load-bearing studs 25 gauge or lighter, molded-in Speed Klamps™, two ½" knockouts   | 3-9/16              | 4       | 3-¾    | 94501      | 24             | 9              |
|                             | 61.0           | SB-3           | Three-gang adjustable outlet box, internal stud screws for use in wood or steel non-load-bearing studs 25 gauge or lighter, molded-in Speed Klamps™, two ½" knockouts   | 3-9/16              | 5-13/16 | 3-¾    | 94502      | 6              | 3              |
|                             | 74.8           | SB-4           | Four-gang adjustable outlet box, internal stud screws for use in wood or steel non-load-bearing studs 25 gauge or lighter, molded-in Speed Klamps™, two ½" knockouts<br><b>*NOTE: Not UL® classified for fire resistive walls</b> | 3-9/16              | 7-5/8   | 3-¾    | 94504      | 6              | 4              |

| Low Voltage Partition | Catalog Number | Component Description | UPC# 85339 | Std. Pkg. Qty. | Std. Wt. (lb.) |
|-----------------------|----------------|-----------------------|------------|----------------|----------------|
|                       |                |                       |            |                |                |

\* Consists of ten (10) packages of five (5) pieces each.



SB-CB



SB-CBG



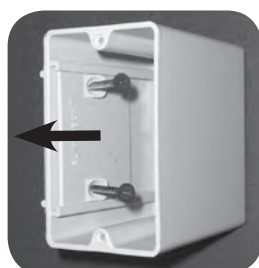
SB-CBFR



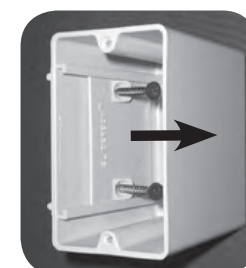
Outlet Box

UL File No. E30594

| SLIDERBOX® 4" Dia. | Cu. In. Volume | Catalog Number | Component Description   | Exterior Dim. |   | Fan Rating | Fixture Rating | UPC# 85339 | Std. Pkg. Qty. | Std. Wt. (lb.) |
|--------------------|----------------|----------------|---|---------------|---|------------|----------------|------------|----------------|----------------|
|                    |                |                |   | D             | W |            |                |            |                |                |
|                    | 25.0           | SB-CB          | 4" diameter adjustable ceiling box, internal stud screws for use in wood or steel non-load-bearing studs 25 gauge or lighter, molded-in Speed Klamps™, two ½" knockouts   | 2-¾           | 4 | —          | 50 lb.         | 94505      | 12             | 3              |
|                    | 25.0           | SB-CBG         | 4" diameter adjustable ceiling box, internal stud screws for use in wood or steel non-load-bearing studs 25 gauge or lighter, ground strap, molded-in Speed Klamps™, two ½" knockouts                                     | 2-¾           | 4 | —          | 50 lb.         | 94507      | 12             | 4              |
|                    | 25.0           | SB-CBFR        | 4" diameter adjustable fan & fixture support, internal stud screws for use in wood or steel non-load-bearing studs 25 gauge or lighter, molded-in Speed Klamps™, two ½" knockouts, paddle fan mounting bracket and screws | 2-¾           | 4 | 70 lb.     | 90 lb.         | 94506      | 12             | 10             |



Slider plate in full forward position sets box for 1/2" drywall.



Slider plate retracted sets box in fully adjusted forward position for maximum wall substrate thickness of 1-3/8".



SLIDERBOX® can be used in New Work or Old Work/Manufactured Housing Applications

All dimensions are in inches unless otherwise noted.



Flush-Device Box

UL File No. E30594



LVP-2



P2400W with LVP-2 installed



P3520W with LVP-2 installed

| Low Voltage Partition | Catalog Number | Component Description   | UPC# 85339 | Std. Pkg. Qty. | Std. Wt. (lb.) |
|-----------------------|----------------|---|------------|----------------|----------------|
|                       | LVP-2          | Low voltage divider plate for use with the following part numbers:<br>P-442, P-442QT, P-643, P-643QT, P-764, P-764QT, P-764B, P-764H, P-764HBQT, P-2400W, and P-3520W |            | 80005          | 50*            |

\* Consists of ten (10) packages of five (5) pieces each.



PJ-20N



PJ-20H



PJ-32N



PJ-32H



PJ-4S1



PJ-4T1



PJ-4B

| 4" Square Junction Boxes | Cu. In. Volume | Catalog Number  | Component Description | Exterior Dimensions |   |       | UPC# 85339 | Std. Pkg. Qty. | Std. Wt. (lb.) |
|--------------------------|----------------|---|-----------------------|---------------------|---|-------|------------|----------------|----------------|
|                          |                |   |                       | D                   | W | H     |            |                |                |
| 20.5                     | PJ-20N         | 4" square junction box, angled nails, molded-in Speed Klamps™                   | 1-5/8                 | 4                   | 4 | 99001 | 48         | 11             |                |
| 20.5                     | PJ-20H         | 4" square junction box, face bracket side mount hanger, molded-in Speed Klamps™ | 1-5/8                 | 4                   | 4 | 99000 | 48         | 15             |                |
| 32.5                     | PJ-32N         | 4" square junction box, angled nails, molded-in Speed Klamps™                   | 2-1/2                 | 4                   | 4 | 99003 | 48         | 13             |                |
| 32.5                     | PJ-32H         | 4" square junction box, face bracket side mount hanger, molded-in Speed Klamps™ | 2-1/2                 | 4                   | 4 | 99002 | 48         | 17             |                |

| Plaster Rings/Cover | Cu. In. Volume | Catalog Number  | Component Description | Exterior Dimensions |   |       | UPC# 85339 | Std. Pkg. Qty. | Std. Wt. (lb.) |
|---------------------|----------------|---|-----------------------|---------------------|---|-------|------------|----------------|----------------|
|                     |                |   |                       | D                   | W | H     |            |                |                |
| 4.2                 | PJ-4S1         | Single gang plaster ring for use w/ 4" square junction box, 1/2" offset | 5/8                   | 4                   | 4 | 99004 | 100        | 8              |                |
| 5.1                 | PJ-4S2         | Single gang plaster ring for use w/ 4" square junction box, 5/8" offset | 3/4                   | 4                   | 4 | 99005 | 50         | 5              |                |
| 6.7                 | PJ-4T1         | Two gang plaster ring for use w/ 4" square junction box, 1/2" offset    | 5/8                   | 4                   | 4 | 99006 | 50         | 4              |                |
| 8.1                 | PJ-4T2         | Two gang plaster ring for use w/ 4" square junction box, 5/8" offset    | 3/4                   | 4                   | 4 | 99007 | 50         | 4              |                |
| —                   | PJ-4B          | Square blank cover for use with 4" square junction box                  | —                     | 4                   | 4 | 99008 | 100        | 8              |                |

All dimensions are in inches unless otherwise noted.  
 See page 32 for flexbox® Attachment Coding suffix descriptions.



# Structured Cable/Low Voltage

Single Gang Boxes, Low Voltage Partitions, Plaster Rings



ALLIED MOULDED PRODUCTS, Inc.



LVBOW-1



LVB-1



LVPR-1



LVP-1



LVP-2

| Structured Cable/Low Voltage | Catalog Number | Component Description  | Exterior Dimensions |        |         | UPC# 85339 | Std. Pkg. Qty. | Std. Wt. (lb.) |
|------------------------------|----------------|--|---------------------|--------|---------|------------|----------------|----------------|
|                              |                |  | D                   | W      | H       |            |                |                |
|                              | LVBOW-1        | Single gang, old work, structured cable box with ears and wings  | 3-1/16              | 2-5/16 | 3-11/16 | 80003      | 24             | 5              |
|                              | LVB-1          | Single gang, angled mid-nails, structured cable box  | 2-3/4               | 2-1/4  | 3-3/4   | 80002      | 48             | 9              |
|                              | LVPR-1         | Single gang plaster ring, 1/2" offset, structured cable bracket for steel or wood stud face mounting   | 5/8                 | 4      | 4       | 80001      | 50             | 4              |
|                              | LVP-1          | Low voltage divider plate for use with fiberglassBOX™ series 2302, 3303, 4304, 5305, and 9314 only   | 3/32                | 3-5/16 | 3-3/4   | 80000      | 50*            | 3              |
|                              | LVP-2          | Low voltage divider plate for use with SLIDERBOX® series SB-2, SB-3, and SB-4; and flexBOX® part numbers P-442, P-442QT, P-643, P-643QT, P-764, P-764QT, P-764B, P-764H, P-764HBQT, P-2400W, and P-3520W | 3-32                | 3-1/16 | 3-1/2   | 80005      | 50*            | 3              |

\* Consists of ten (10) packages of five (5) pieces each.

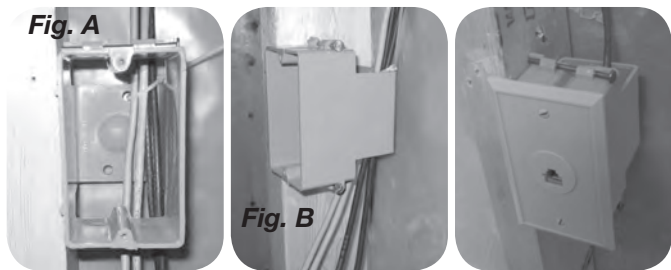
## LVBOW-1 Features and Benefits

- Old work structured cable box
- Sturdy construction with “box-like” strength and rigidity
- Molded thread device holes provide for secure mounting of structured cable devices and cover plates
- Eliminates the need to modify single gang outlet boxes
- Open back design for generous cable bend radius
- Holes in back section provide a means to secure the cable allowing cable accessibility later (Fig. A)
- U.S. Patents D531,128 and 7,179,994



## LVB-1 Features and Benefits

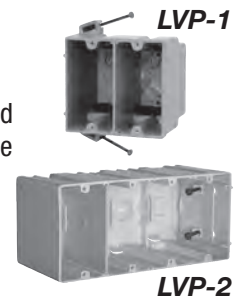
- New work structured cable box
- Sturdy construction with “box-like” strength and rigidity
- Eliminates need to modify single gang box
- Open back for generous cable bend radius
- Easy nail-on mounting design
- Holes on back provide a means to wire tie the cable allowing cable accessibility later (Fig. A)
- Open back channel to store and protect cable during drywall phase (Fig. B)
- US Patents D531,128 and 7,179,994



## LVP-1/LVP-2 Features and Benefits

- Separates line and low voltage within the same electrical box
- Use LVP-1 with Allied Moulded’s deep series 2302, 3303, 4304, 5305, and 9314 fiberglass boxes
- Use LVP-2 with Allied Moulded’s flexBOX® products and SLIDERBOX® products (see chart above for specific part numbers)
- Allows for a reduced number of wall box installations
- Fast, easy and convenient to install

- Complies with article 800.133(A)(1)(c) from 2008 NEC
- For low voltage applications in fire rated walls, utilize the LVP-1 partition with the Allied Moulded deep series fiberglass wall boxes which carry the industry exclusive rating for reduced horizontal separation in the same stud cavity



All dimensions are in inches unless otherwise noted.

Old Work/Manufactured Housing Boxes



UL File No. E245435 - Boxes  
UL File No. E30594 - Partitions



SB-1



SB-1H



SB-2



SB-3



SB-4



LVP-2



SB-2 with LVP installed

| SLIDERBOX® Adjustable Boxes | Cu. In. Volume | Catalog Number | Component Description   | Exterior Dimensions |         |        | UPC# 85339 | Std. Pkg. Qty. | Std. Wt. (lb.) |
|-----------------------------|----------------|----------------|---|---------------------|---------|--------|------------|----------------|----------------|
|                             |                |                |   | D                   | W       | H      |            |                |                |
|                             | 23.0           | SB-1           | Single gang adjustable outlet box, internal stud screws for use in wood or steel non-load-bearing studs 25 gauge or lighter, ½" knockout  | 3-9/16              | 2-5/16  | 3-¾    | 94500      | 48             | 14             |
|                             | 23.0           | SB-1H          | Single gang adjustable outlet box, <b>horizontal mount</b> , internal stud screws for use in wood or steel non-load-bearing studs 25 gauge or lighter, ½" knockout  | 3-9/16              | 3-¾     | 2-5/16 | 94503      | 12             | 4              |
|                             | 42.0           | SB-2           | Two-gang adjustable outlet box, internal stud screws for use in wood or steel non-load-bearing studs 25 gauge or lighter, molded-in Speed Klamps™, two ½" knockouts   | 3-9/16              | 4       | 3-¾    | 94501      | 24             | 9              |
|                             | 61.0           | SB-3           | Three-gang adjustable outlet box, internal stud screws for use in wood or steel non-load-bearing studs 25 gauge or lighter, molded-in Speed Klamps™, two ½" knockouts   | 3-9/16              | 5-13/16 | 3-¾    | 94502      | 6              | 3              |
|                             | 74.8           | SB-4           | Four-gang adjustable outlet box, internal stud screws for use in wood or steel non-load-bearing studs 25 gauge or lighter, molded-in Speed Klamps™, two ½" knockouts<br><b>*NOTE: Not UL® classified for fire resistive walls</b> | 3-9/16              | 7-5/8   | 3-¾    | 94504      | 6              | 4              |

| Low Voltage Partition | Catalog Number | Component Description | UPC# 85339 | Std. Pkg. Qty. | Std. Wt. (lb.) |
|-----------------------|----------------|-----------------------|------------|----------------|----------------|
|                       |                |                       |            |                |                |

\* Consists of ten (10) packages of five (5) pieces each.



SB-CB



SB-CBG



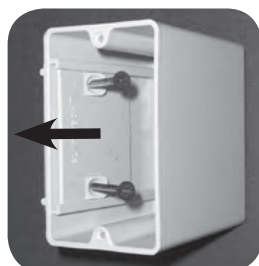
SB-CBFR



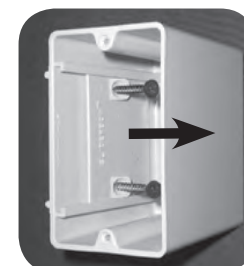
Outlet Box

UL File No. E30594

| SLIDERBOX® 4" Dia. | Cu. In. Volume | Catalog Number | Component Description   | Exterior Dim. |   | Fan Rating | Fixture Rating | UPC# 85339 | Std. Pkg. Qty. | Std. Wt. (lb.) |
|--------------------|----------------|----------------|---|---------------|---|------------|----------------|------------|----------------|----------------|
|                    |                |                |   | D             | W |            |                |            |                |                |
|                    | 25.0           | SB-CB          | 4" diameter adjustable ceiling box, internal stud screws for use in wood or steel non-load-bearing studs 25 gauge or lighter, molded-in Speed Klamps™, two ½" knockouts   | 2-¾           | 4 | —          | 50 lb.         | 94505      | 12             | 3              |
|                    | 25.0           | SB-CBG         | 4" diameter adjustable ceiling box, internal stud screws for use in wood or steel non-load-bearing studs 25 gauge or lighter, ground strap, molded-in Speed Klamps™, two ½" knockouts                                     | 2-¾           | 4 | —          | 50 lb.         | 94507      | 12             | 4              |
|                    | 25.0           | SB-CBFR        | 4" diameter adjustable fan & fixture support, internal stud screws for use in wood or steel non-load-bearing studs 25 gauge or lighter, molded-in Speed Klamps™, two ½" knockouts, paddle fan mounting bracket and screws | 2-¾           | 4 | 70 lb.     | 90 lb.         | 94506      | 12             | 10             |



Slider plate in full forward position sets box for 1/2" drywall.



Slider plate retracted sets box in fully adjusted forward position for maximum wall substrate thickness of 1-3/8".



SLIDERBOX® can be used in New Work or Old Work/Manufactured Housing Applications

All dimensions are in inches unless otherwise noted.



Flush-Device Box

UL File No. E30594



LVP-2



P2400W with LVP-2 installed



P3520W with LVP-2 installed

| Low Voltage Partition | Catalog Number | Component Description   | UPC# 85339 | Std. Pkg. Qty. | Std. Wt. (lb.) |
|-----------------------|----------------|---|------------|----------------|----------------|
|                       | LVP-2          | Low voltage divider plate for use with the following part numbers:<br>P-442, P-442QT, P-643, P-643QT, P-764, P-764QT, P-764B, P-764H, P-764HBQT, P-2400W, and P-3520W |            | 80005          | 50*            |

\* Consists of ten (10) packages of five (5) pieces each.



PJ-20N



PJ-20H



PJ-32N



PJ-32H



PJ-4S1



PJ-4T1



PJ-4B

| 4" Square Junction Boxes | Cu. In. Volume | Catalog Number  | Component Description | Exterior Dimensions |   |       | UPC# 85339 | Std. Pkg. Qty. | Std. Wt. (lb.) |
|--------------------------|----------------|---|-----------------------|---------------------|---|-------|------------|----------------|----------------|
|                          |                |   |                       | D                   | W | H     |            |                |                |
| 20.5                     | PJ-20N         | 4" square junction box, angled nails, molded-in Speed Klamps™                   | 1-5/8                 | 4                   | 4 | 99001 | 48         | 11             |                |
| 20.5                     | PJ-20H         | 4" square junction box, face bracket side mount hanger, molded-in Speed Klamps™ | 1-5/8                 | 4                   | 4 | 99000 | 48         | 15             |                |
| 32.5                     | PJ-32N         | 4" square junction box, angled nails, molded-in Speed Klamps™                   | 2-1/2                 | 4                   | 4 | 99003 | 48         | 13             |                |
| 32.5                     | PJ-32H         | 4" square junction box, face bracket side mount hanger, molded-in Speed Klamps™ | 2-1/2                 | 4                   | 4 | 99002 | 48         | 17             |                |

| Plaster Rings/Cover | Cu. In. Volume | Catalog Number  | Component Description | Exterior Dimensions |   |       | UPC# 85339 | Std. Pkg. Qty. | Std. Wt. (lb.) |
|---------------------|----------------|---|-----------------------|---------------------|---|-------|------------|----------------|----------------|
|                     |                |   |                       | D                   | W | H     |            |                |                |
| 4.2                 | PJ-4S1         | Single gang plaster ring for use w/ 4" square junction box, 1/2" offset | 5/8                   | 4                   | 4 | 99004 | 100        | 8              |                |
| 5.1                 | PJ-4S2         | Single gang plaster ring for use w/ 4" square junction box, 5/8" offset | 3/4                   | 4                   | 4 | 99005 | 50         | 5              |                |
| 6.7                 | PJ-4T1         | Two gang plaster ring for use w/ 4" square junction box, 1/2" offset    | 5/8                   | 4                   | 4 | 99006 | 50         | 4              |                |
| 8.1                 | PJ-4T2         | Two gang plaster ring for use w/ 4" square junction box, 5/8" offset    | 3/4                   | 4                   | 4 | 99007 | 50         | 4              |                |
| —                   | PJ-4B          | Square blank cover for use with 4" square junction box                  | —                     | 4                   | 4 | 99008 | 100        | 8              |                |

All dimensions are in inches unless otherwise noted.  
See page 32 for flexbox® Attachment Coding suffix descriptions.



# Structured Cable/Low Voltage

Single Gang Boxes, Low Voltage Partitions, Plaster Rings



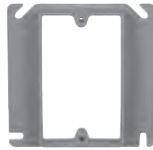
ALLIED MOULDED PRODUCTS, Inc.



LVBOW-1



LVB-1



LVPR-1



LVP-1



LVP-2

| Structured Cable/Low Voltage | Catalog Number | Component Description  | Exterior Dimensions |        |         | UPC# 85339 | Std. Pkg. Qty. | Std. Wt. (lb.) |
|------------------------------|----------------|--|---------------------|--------|---------|------------|----------------|----------------|
|                              |                |  | D                   | W      | H       |            |                |                |
|                              | LVBOW-1        | Single gang, old work, structured cable box with ears and wings  | 3-1/16              | 2-5/16 | 3-11/16 | 80003      | 24             | 5              |
|                              | LVB-1          | Single gang, angled mid-nails, structured cable box  | 2-3/4               | 2-1/4  | 3-3/4   | 80002      | 48             | 9              |
|                              | LVPR-1         | Single gang plaster ring, 1/2" offset, structured cable bracket for steel or wood stud face mounting   | 5/8                 | 4      | 4       | 80001      | 50             | 4              |
|                              | LVP-1          | Low voltage divider plate for use with fiberglassBOX™ series 2302, 3303, 4304, 5305, and 9314 only   | 3/32                | 3-5/16 | 3-3/4   | 80000      | 50*            | 3              |
|                              | LVP-2          | Low voltage divider plate for use with SLIDERBOX® series SB-2, SB-3, and SB-4; and flexBOX® part numbers P-442, P-442QT, P-643, P-643QT, P-764, P-764QT, P-764B, P-764H, P-764HBQT, P-2400W, and P-3520W | 3-32                | 3-1/16 | 3-1/2   | 80005      | 50*            | 3              |

\* Consists of ten (10) packages of five (5) pieces each.

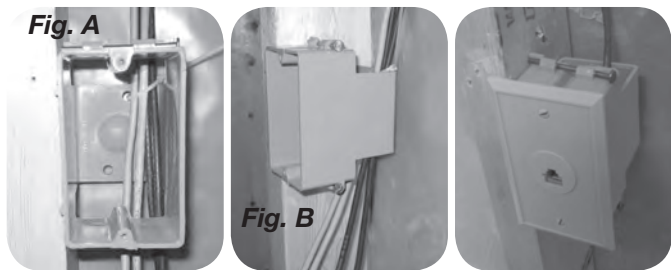
## LVBOW-1 Features and Benefits

- Old work structured cable box
- Sturdy construction with “box-like” strength and rigidity
- Molded thread device holes provide for secure mounting of structured cable devices and cover plates
- Eliminates the need to modify single gang outlet boxes
- Open back design for generous cable bend radius
- Holes in back section provide a means to secure the cable allowing cable accessibility later (Fig. A)
- U.S. Patents D531,128 and 7,179,994



## LVB-1 Features and Benefits

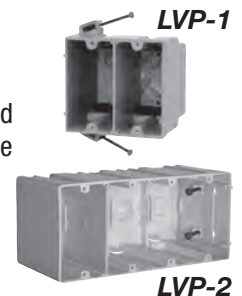
- New work structured cable box
- Sturdy construction with “box-like” strength and rigidity
- Eliminates need to modify single gang box
- Open back for generous cable bend radius
- Easy nail-on mounting design
- Holes on back provide a means to wire tie the cable allowing cable accessibility later (Fig. A)
- Open back channel to store and protect cable during drywall phase (Fig. B)
- US Patents D531,128 and 7,179,994



## LVP-1/LVP-2 Features and Benefits

- Separates line and low voltage within the same electrical box
- Use LVP-1 with Allied Moulded’s deep series 2302, 3303, 4304, 5305, and 9314 fiberglass boxes
- Use LVP-2 with Allied Moulded’s flexBOX® products and SLIDERBOX® products (see chart above for specific part numbers)
- Allows for a reduced number of wall box installations
- Fast, easy and convenient to install

- Complies with article 800.133(A)(1)(c) from 2008 NEC
- For low voltage applications in fire rated walls, utilize the LVP-1 partition with the Allied Moulded deep series fiberglass wall boxes which carry the industry exclusive rating for reduced horizontal separation in the same stud cavity



All dimensions are in inches unless otherwise noted.

Old Work/Manufactured Housing Boxes



UL File No. E245435 - Boxes  
UL File No. E30594 - Partitions