

**Catalog Number ERN (1 - 600A) 250 Volts AC or Less**  
**Catalog Number ERS (1 - 600A) 600 Volts AC or Less**

AMPERE RATINGS					
ERN 250V					
1	12	40	90	200	450
3	15	45	100	225	500
5	20	50	110	250	600
6	25	60	125	300	—
7	30	70	150	350	—
10	35	80	175	400	—
ERS 600V					
1	7	25	60	150	350
2	8	30	70	175	400
3	10	35	80	200	450
4	12	40	90	225	500
5	15	45	100	250	600
6	20	50	125	300	—

**ERN/ERS SPECIFICATIONS**

"Renewable", Non Time-Delay

**Voltage Rating:** ERN - 250VAC, ERS - 600VAC

**Ampere Rating:** 1 - 600 Amps

**Interrupting Rating:** 10,000 RMS Symmetrical Amps

**Agency Approvals:**

ERN (1-60A), (201-600A); ERS (1-100A), (201-600A)  
 UL Listed, Class H, UL248-6, File E162363  
 CSA Certified HRC-H per C22.22, No. 248.6, LR700489

**BENEFITS:**

- Economical, for general purpose use.
- Time lag design sustains overloads better than other Class H fuses.

**APPLICATIONS:**

- Circuits having relatively low levels of available short circuit current.
- Industrial and commercial applications having frequent outages where a renewable type fuse is desired.
- For motor applications, refer to EDISON ECNR/ECNR.

**RECOMMENDED FUSEBLOCKS:**

Refer to page 135 in this catalog.

**RECOMMENDED UPGRADE:**

ECNR/ECNR or LENRK/LESRK.

CROSS REFERENCE				
VOLTS	EDISON	BUSSMANN	GOULD	LITTELFUSE
250	ERN	REN	OT	RLN
600	ERS	RES	OTS	RLS

**REPLACEMENT LINKS FOR RENEWABLE TYPE FUSES**

**Catalog Number ELNE (Amp) 250 Volts for ERN Fuses**  
**Catalog Number ELS (Amp) 600 Volts for ERS Fuses**

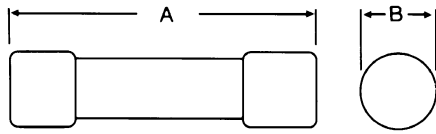
AMPERE RATINGS
Refer to respective table above.

CROSS REFERENCE				
VOLTS	EDISON	BUSSMANN	GOULD	LITTELFUSE
250	ELNE	LKN	RL	LKN
600	ELS	LKS	RLS	LKS

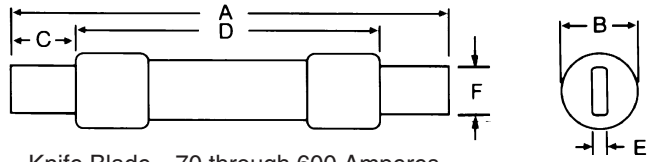


**ELNE CLASS H RENEWABLE FUSE LINKS**  
**ELS CLASS H RENEWABLE FUSE LINKS**

**DIMENSIONS**



Ferrule Design—1 through 60 Amperes

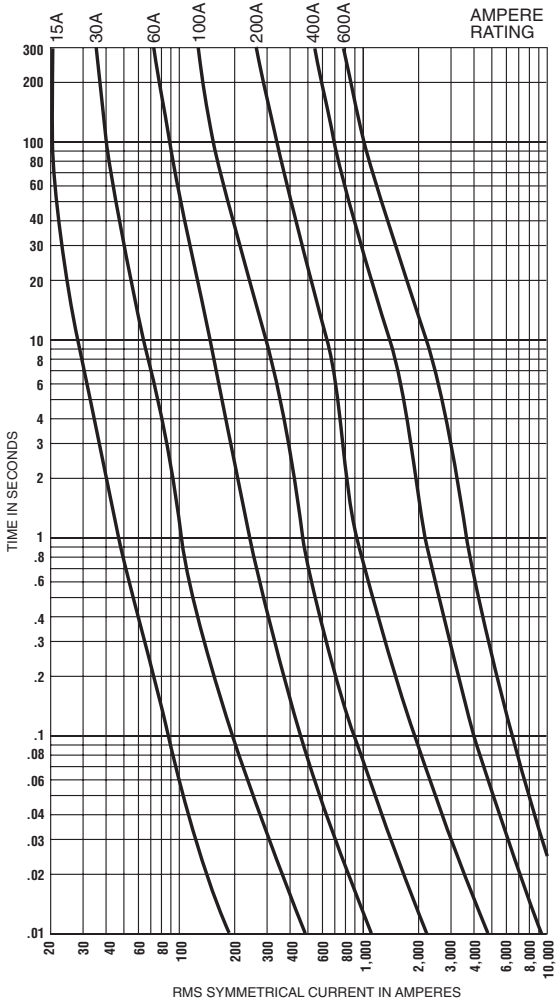


Knife Blade—70 through 600 Amperes

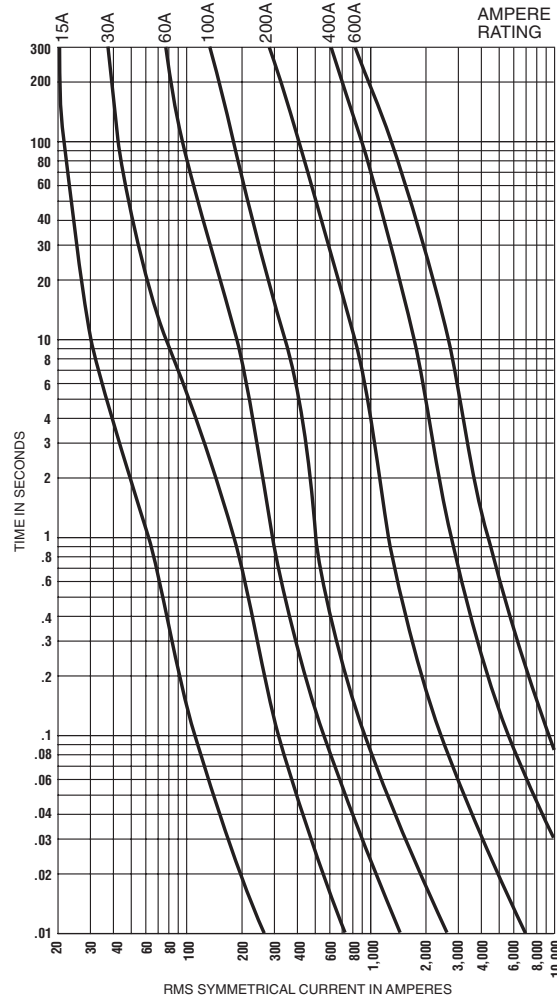
Volts and Catalog Number	Amps	Overall	Max. Diameter	Min. Blade Length	Min. Barrel Length	Blade Thickness	Blade Width
		A	B	C	D	E	F
ERN 250 VAC	1-30	2	9/16	-	-	-	-
	35-60	3	13/16	-	-	-	-
	70-100	5-7/8	-	1	-	1/8	3/4
	110-200	7-1/8	-	1-3/8	4-1/8	3/16	1-1/8
	225-400	8-5/8	-	1-7/8	4-5/8	1/4	1-5/8
ERS 600 VAC	450-600	10-3/8	-	2-1/4	5-3/16	1/4	2
	1-30	5	13/16	-	-	-	-
	35-60	5-1/2	1-1/16	-	-	-	-
	70-100	7-7/8	-	1	-	1/8	3/4
	110-200	9-5/8	-	1-3/8	6-1/8	3/16	1-1/8
450-600	225-400	11-5/8	-	1-7/8	7-1/8	1/4	1-5/8
	450-600	13-3/8	-	2-1/4	8-3/16	1/4	2

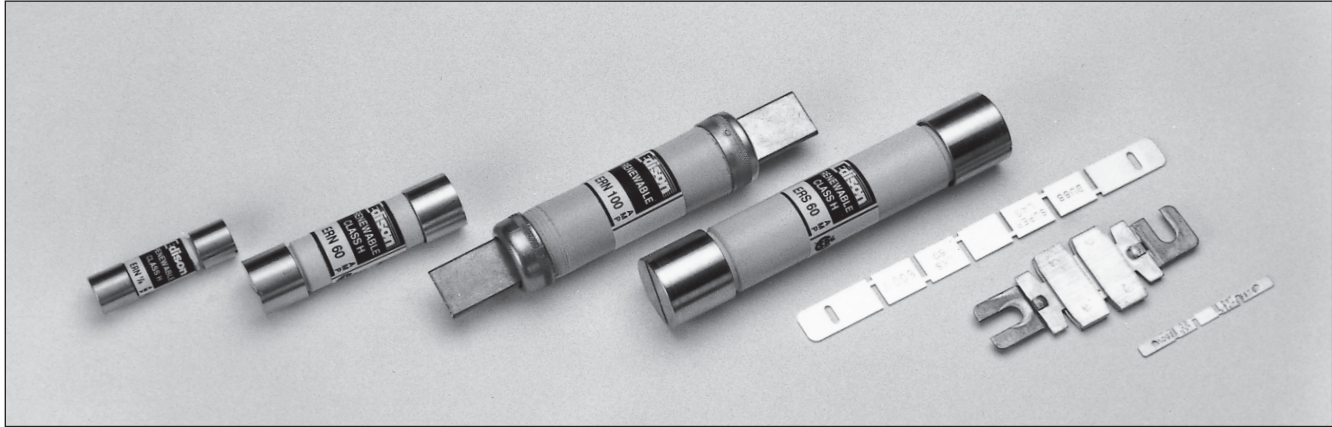
**AVERAGE TIME/CURRENT CURVES**

**Cat. No. ERN (Amp) 250V**



**Cat. No. ERS (Amp) 600V**





**Catalog Number ERN (1 - 600A) 250 Volts AC or Less**  
**Catalog Number ERS (1 - 600A) 600 Volts AC or Less**

AMPERE RATINGS					
ERN 250V					
1	12	40	90	200	450
3	15	45	100	225	500
5	20	50	110	250	600
6	25	60	125	300	—
7	30	70	150	350	—
10	35	80	175	400	—
ERS 600V					
1	7	25	60	150	350
2	8	30	70	175	400
3	10	35	80	200	450
4	12	40	90	225	500
5	15	45	100	250	600
6	20	50	125	300	—

**ERN/ERS SPECIFICATIONS**

"Renewable", Non Time-Delay

**Voltage Rating:** ERN - 250VAC, ERS - 600VAC

**Ampere Rating:** 1 - 600 Amps

**Interrupting Rating:** 10,000 RMS Symmetrical Amps

**Agency Approvals:**

ERN (1-60A), (201-600A); ERS (1-100A), (201-600A)  
 UL Listed, Class H, UL248-6, File E162363  
 CSA Certified HRC-H per C22.22, No. 248.6, LR700489

**BENEFITS:**

- Economical, for general purpose use.
- Time lag design sustains overloads better than other Class H fuses.

**APPLICATIONS:**

- Circuits having relatively low levels of available short circuit current.
- Industrial and commercial applications having frequent outages where a renewable type fuse is desired.
- For motor applications, refer to EDISON ECNR/ECNR.

**RECOMMENDED FUSEBLOCKS:**

Refer to page 135 in this catalog.

**RECOMMENDED UPGRADE:**

ECNR/ECNR or LENRK/LESRK.

CROSS REFERENCE				
VOLTS	EDISON	BUSSMANN	GOULD	LITTELFUSE
250	ERN	REN	OT	RLN
600	ERS	RES	OTS	RLS

**REPLACEMENT LINKS FOR RENEWABLE TYPE FUSES**

**Catalog Number ELNE (Amp) 250 Volts for ERN Fuses**  
**Catalog Number ELS (Amp) 600 Volts for ERS Fuses**

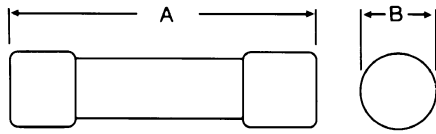
AMPERE RATINGS
Refer to respective table above.

CROSS REFERENCE				
VOLTS	EDISON	BUSSMANN	GOULD	LITTELFUSE
250	ELNE	LKN	RL	LKN
600	ELS	LKS	RLS	LKS

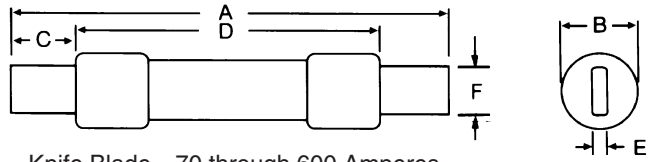


**ELNE CLASS H RENEWABLE FUSE LINKS**  
**ELS CLASS H RENEWABLE FUSE LINKS**

**DIMENSIONS**



Ferrule Design—1 through 60 Amperes

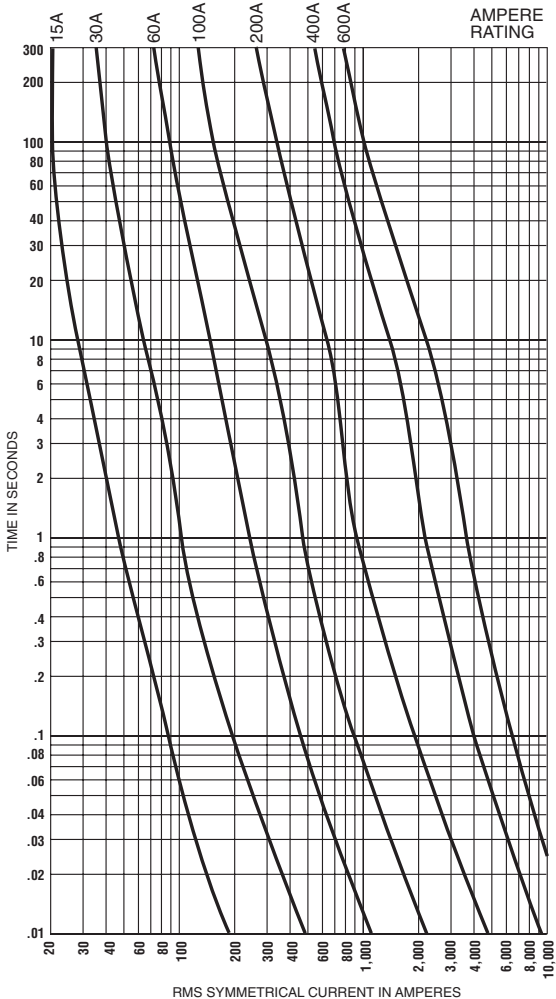


Knife Blade—70 through 600 Amperes

Volts and Catalog Number	Amps	Overall	Max. Diameter	Min. Blade Length	Min. Barrel Length	Blade Thickness	Blade Width
		A	B	C	D	E	F
ERN 250 VAC	1-30	2	9/16	-	-	-	-
	35-60	3	13/16	-	-	-	-
	70-100	5-7/8	-	1	-	1/8	3/4
	110-200	7-1/8	-	1-3/8	4-1/8	3/16	1-1/8
	225-400	8-5/8	-	1-7/8	4-5/8	1/4	1-5/8
ERS 600 VAC	450-600	10-3/8	-	2-1/4	5-3/16	1/4	2
	1-30	5	13/16	-	-	-	-
	35-60	5-1/2	1-1/16	-	-	-	-
	70-100	7-7/8	-	1	-	1/8	3/4
	110-200	9-5/8	-	1-3/8	6-1/8	3/16	1-1/8
450-600	225-400	11-5/8	-	1-7/8	7-1/8	1/4	1-5/8
	450-600	13-3/8	-	2-1/4	8-3/16	1/4	2

**AVERAGE TIME/CURRENT CURVES**

**Cat. No. ERN (Amp) 250V**



**Cat. No. ERS (Amp) 600V**

