

## UL LISTED CERTIFIED Code Conductor, Two-Hole, Long Barrel with Window Lug

For Use with Stranded Copper Conductors



- Meets TIA-607-B requirements for network systems grounding applications
- Tested by Telcordia – meets NEBS Level 3 with AWG conductor
- Requires crimping tools and dies, see pages M.46 – M.49
- UL Listed and CSA Certified with AWG conductor for use up to 35 KV\*\* and temperature rated 90°C when crimped with Panduit and specified competitor crimping tools and dies
- Color-coded barrels marked with Panduit and specified competitor die index numbers for proper crimp die selection
- Long barrel maximizes number of crimps and provides premium wire pull-out strength and electrical performance
- Inspection window to visually assure full conductor insertion
- Tin-plated to inhibit corrosion
- Available with NEMA hole sizes and spacing

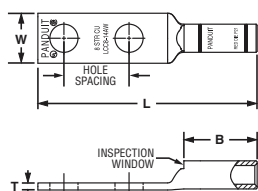


Figure 1: Straight

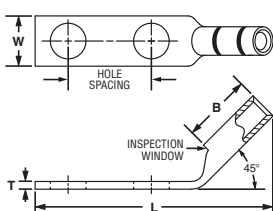


Figure 2: 45° Bent

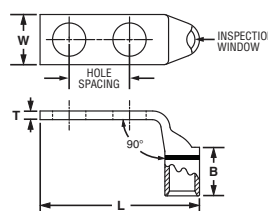


Figure 3: 90° Bent

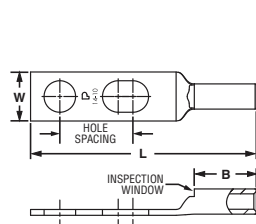


Figure 4: Slotted, Straight

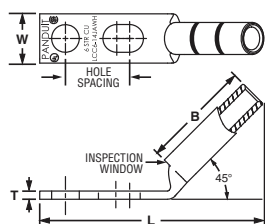


Figure 5: Slotted, 45° Bent

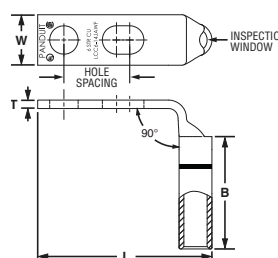


Figure 6: Slotted, 90° Bent

| Part Number     | Figure No. | Copper Conductor Size                | Stud Hole Size In. | Stud Hole Spacing In. | Figure Dimensions In. |      |      | Panduit Crimping Tool‡                 | Panduit Die Color and Die No.‡ | Wire Strip Length In. | Busbar Pattern^ | Std. Pkg. Qty. |
|-----------------|------------|--------------------------------------|--------------------|-----------------------|-----------------------|------|------|--|--------------------------------|-----------------------|-----------------|----------------|
|                 |            |                                      |                    |                       | W                     | B    | L    |  |                                |                       |                 |                |
| LCC10-14JAW-L*  | 4          | #14 – #10 AWG STR, #12 – #10 AWG SOL | 1/4                | 0.50 – 0.63           | 0.42                  | 0.53 | 1.93 | CT-1570, CT-1701                       | —                              | 9/16                  | B               | 50             |
| LCC10-14JAWH-L* | 5          |                                      | 1/4                | 0.50 – 0.63           | 0.42                  | 0.53 | 1.78 |  |                                |                       | B               | 50             |
| LCC10-14JAWF-L* | 6          |                                      | 1/4                | 0.50 – 0.63           | 0.42                  | 0.53 | 1.56 |  |                                |                       | B               | 50             |
| LCC10-14AW-L*   | 1          |                                      | 1/4                | 0.63                  | 0.42                  | 0.53 | 1.93 |  |                                |                       | B               | 50             |
| LCC8-10AW-L     | 1          | #8 AWG                               | #10                | 0.63                  | 0.41                  | 0.70 | 2.01 | CT-1700, CT-930, CT-2930/L, CT-2930/LE | Red P21                        | 3/4                   | B               | 50             |
| LCC8-14AWH-L    | 2          |                                      | 1/4                | 0.63                  | 0.48                  | 0.70 | 1.91 |  |                                |                       | B               | 50             |
| LCC8-14AWF-L    | 3          |                                      | 1/4                | 0.63                  | 0.48                  | 0.70 | 1.61 |  |                                |                       | B               | 50             |
| LCC8-38DW-L     | 1          |                                      | 3/8                | 1.00                  | 0.60                  | 0.70 | 2.70 |  |                                |                       | B, D            | 50             |

‡See pages M.50 – M.53 for Panduit and competitor tool and die information.

\*Not tested to NEBS Level 3 requirements.

\*\*Consult cable manufacturer for voltage stress relief instructions with applications greater than 2000 V.

^See page M.30 for busbar patterns.

◆NEMA hole sizes and spacing.



### Code Conductor, Two-Hole, Long Barrel with Window Lug (continued)

| Part Number   | Figure No. | Copper Conductor Size       | Stud Hole Size In. | Stud Hole Spacing In. | Figure Dimensions In. |      |      | Panduit Crimping Tool‡                 | Panduit Die Color and Die No.‡ | Wire Strip Length In. | Busbar Pattern^ | Std. Pkg. Qty. |
|---------------|------------|-----------------------------|--------------------|-----------------------|-----------------------|------|------|--|--------------------------------|-----------------------|-----------------|----------------|
|               |            |                             |                    |                       | W                     | B    | L    |  |                                |                       |                 |                |
| LCC6-10ABW-L  | 4          | #6 AWG                      | #10                | 0.63 – 0.75           | 0.46                  | 1.07 | 2.52 | CT-1700, CT-930, CT-2930/L, CT-2930/LE | Blue P24                       | 1 1/8                 | B               | 50             |
| LCC6-14JAW-L  | 4          |                             | 1/4                | 0.50 – 0.63           | 0.48                  | 1.07 | 2.49 |  |                                |                       | B               | 50             |
| LCC6-14JAWH-L | 5          |                             | 1/4                | 0.50 – 0.63           | 0.48                  | 1.07 | 2.08 |  |                                |                       | B               | 50             |
| LCC6-14JAWF-L | 6          |                             | 1/4                | 0.50 – 0.63           | 0.48                  | 1.07 | 1.66 |  |                                |                       | B               | 50             |
| LCC6-14AW-L   | 1          |                             | 1/4                | 0.63                  | 0.48                  | 1.07 | 2.49 |  |                                |                       | B               | 50             |
| LCC6-38DW-L   | 1          |                             | 3/8                | 1.00                  | 0.62                  | 1.07 | 3.08 |  |                                |                       | B, D            | 50             |
| LCC6-12W-L    | 1          |                             | 1/2                | 1.75                  | 0.75                  | 1.07 | 3.97 |  |                                |                       | 1 1/8           | N              |
| LCC4-14AW-L   | 1          | #4 – #3 AWG STR, #2 AWG SOL | 1/4                | 0.63                  | 0.55                  | 1.05 | 2.50 | CT-1700, CT-930, CT-2930/L, CT-2930/LE | Gray P29                       | 1 1/8                 | B               | 50             |
| LCC4-38DW-L   | 1          |                             | 3/8                | 1.00                  | 0.62                  | 1.05 | 3.09 |  |                                |                       | B, D            | 50             |
| LCC4-12W-L    | 1          |                             | 1/2                | 1.75                  | 0.75                  | 1.05 | 4.01 |  |                                |                       | 1 1/8           | N              |
| LCC2-14AW-Q   | 1          | #2 AWG                      | 1/4                | 0.63                  | 0.60                  | 1.16 | 2.67 | CT-1700, CT-930, CT-2930/L, CT-2930/LE | Brown P33                      | 1 1/4                 | B               | 25             |
| LCC2-38DW-Q   | 1          |                             | 3/8                | 1.00                  | 0.66                  | 1.16 | 3.24 |  |                                |                       | B, D            | 25             |
| LCC2-12W-Q    | 1          |                             | 1/2                | 1.75                  | 0.75                  | 1.16 | 4.41 |  |                                |                       | N               | 25             |
| LCC1/0-14AW-X | 1          | 1/0 AWG                     | 1/4                | 0.63                  | 0.76                  | 1.44 | 3.07 | CT-930, CT-2930/L, CT-2930/LE          | Pink P42                       | 1 1/2                 | B               | 10             |
| LCC1/0-38DW-X | 1          |                             | 3/8                | 1.00                  | 0.76                  | 1.44 | 3.57 |  |                                |                       | B, D            | 10             |
| LCC1/0-12W-X  | 1          |                             | 1/2                | 1.75                  | 0.80                  | 1.44 | 4.74 |  |                                |                       | N               | 10             |
| LCC2/0-14AW-X | 1          | 2/0 AWG                     | 1/4                | 0.63                  | 0.85                  | 1.50 | 3.23 | CT-930, CT-2930/L, CT-2930/LE          | Black P45                      | 1 9/16                | B               | 10             |
| LCC2/0-38DW-X | 1          |                             | 3/8                | 1.00                  | 0.85                  | 1.50 | 3.67 |  |                                |                       | B, D            | 10             |
| LCC2/0-12W-X  | 1          |                             | 1/2                | 1.75                  | 0.85                  | 1.50 | 4.83 |  |                                |                       | N               | 10             |
| LCC3/0-38DW-X | 1          | 3/0 AWG                     | 3/8                | 1.00                  | 0.96                  | 1.50 | 3.70 | CT-930, CT-2930/L, CT-2930/LE          | Orange P50                     | 1 9/16                | B, D            | 10             |
| LCC3/0-12W-X  | 1          |                             | 1/2                | 1.75                  | 0.96                  | 1.50 | 4.87 |  |                                |                       | N               | 10             |
| LCC4/0-38DW-X | 1          | 4/0 AWG                     | 3/8                | 1.00                  | 1.06                  | 1.56 | 3.81 | CT-930, CT-2930/L, CT-2930/LE          | Purple P54                     | 1 5/8                 | N               | 10             |
| LCC4/0-12W-X  | 1          |                             | 1/2                | 1.75                  | 0.96                  | 1.56 | 3.81 |  |                                |                       | N               | 10             |
| LCC250-38DW-X | 1          | 250 kcmil                   | 3/8                | 1.00                  | 1.17                  | 1.61 | 3.89 | CT-930, CT-2930/L, CT-2930/LE          | Yellow P62                     | 1 11/16               | B, D            | 10             |
| LCC250-12W-X  | 1          |                             | 1/2                | 1.75                  | 1.17                  | 1.61 | 4.12 |  |                                |                       | N               | 10             |

‡See pages M.50 – M.53 for Panduit and competitor tool and die information.

\*Not tested to NEBS Level 3 requirements.

\*\*Consult cable manufacturer for voltage stress relief instructions with applications greater than 2000 V.

^See page M.30 for busbar patterns.

◆NEMA hole sizes and spacing.

Table continues on page M.38

**Code Conductor, Two-Hole, Long Barrel with Window Lug  
(continued)**

| Part Number    | Figure No. | Copper Conductor Size | Stud Hole Size In. | Stud Hole Spacing In. | Figure Dimensions In. |      |      | Panduit Crimping Tool‡              | Panduit Die Color and Die No.‡ | Wire Strip Length In. | Busbar Pattern^ | Std. Pkg. Qty. |
|----------------|------------|-----------------------|--------------------|-----------------------|-----------------------|------|------|-------------------------------------|--------------------------------|-----------------------|-----------------|----------------|
|                |            |                       |                    |                       | W                     | B    | L    |                                     |                                |                       |                 |                |
| ◆ LCC350-12W-X | 1          | 350 kcmil             | 1/2                | 1.75                  | 1.28                  | 2.24 | 5.76 | CT-930,<br>CT-2930/L,<br>CT-2930/LE | Red P71                        | 2 5/16                | N               | 10             |
| LCC350-38DW-X  | 1          |                       | 3/8                | 1.00                  | 1.28                  | 2.24 | 4.58 |                                     | Red P71                        |                       | B, D            | 10             |
| ◆ LCC400-12W-6 | 1          | 400 kcmil             | 1/2                | 1.75                  | 1.28                  | 2.30 | 5.84 | CT-930,<br>CT-2930/L,<br>CT-2930/LE | Blue P76                       | 2 3/8                 | N               | 6              |
| LCC400-38DW-6  | 1          |                       | 3/8                | 1.00                  | 1.39                  | 2.30 | 4.66 |                                     | Blue P76                       |                       | B, D            | 6              |
| ◆ LCC500-12W-6 | 1          | 500 kcmil             | 1/2                | 1.75                  | 1.54                  | 2.50 | 6.12 | CT-930,<br>CT-2930/L,<br>CT-2930/LE | Brown P87                      | 2 9/16                | N               | 6              |
| LCC500-38DW-6  | 1          |                       | 3/8                | 1.00                  | 1.54                  | 2.50 | 4.94 |                                     | Brown P87                      |                       | B, D            | 6              |
| ◆ LCC600-12W-6 | 1          | 600 kcmil             | 1/2                | 1.75                  | 1.70                  | 2.69 | 6.36 | CT-930,<br>CT-2930/L,<br>CT-2930/LE | Green P94                      | 2 3/4                 | N               | 6              |
| LCC600-38DW-6  | 1          |                       | 3/8                | 1.00                  | 1.70                  | 2.69 | 5.18 |                                     | Green P94                      |                       | B, D            | 6              |
| ◆ LCC750-12W-6 | 1          | 750 kcmil             | 1/2                | 1.75                  | 1.89                  | 2.88 | 6.65 | CT-930,<br>CT-2930/L,<br>CT-2930/LE | Black P106                     | 2 15/16               | N               | 6              |
| LCC750-38DW-6  | 1          |                       | 3/8                | 1.00                  | 1.89                  | 2.88 | 5.71 |                                     | Black P106                     |                       | B, D            | 6              |

‡See pages M.50 – M.53 for Panduit and competitor tool and die information.

\*Not tested to NEBS Level 3 requirements.

\*\*Consult cable manufacturer for voltage stress relief instructions with applications greater than 2000 V.

^See page M.30 for busbar patterns.

◆NEMA hole sizes and spacing.



### Code Conductor, Two-Hole, Long Barrel with Window Lug

For Use with Stranded Copper Conductors



- Meets TIA-607-B requirements for network systems grounding applications
- Tested by Telcordia – meets NEBS Level 3 with AWG conductor
- Requires crimping tools and dies, see pages M.46 – M.49
- UL Listed and CSA Certified with AWG conductor for use up to 35 KV\*\* and temperature rated 90°C when crimped with Panduit and specified competitor crimping tools and dies
- Color-coded barrels marked with Panduit and specified competitor die index numbers for proper crimp die selection
- Long barrel maximizes number of crimps and provides premium wire pull-out strength and electrical performance
- Inspection window to visually assure full conductor insertion
- Tin-plated to inhibit corrosion
- Available with NEMA hole sizes and spacing

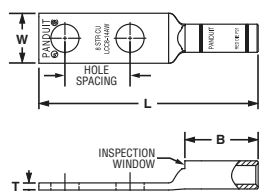


Figure 1: Straight

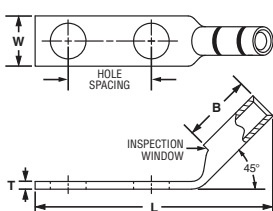


Figure 2: 45° Bent

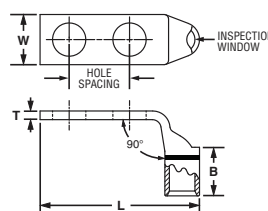


Figure 3: 90° Bent

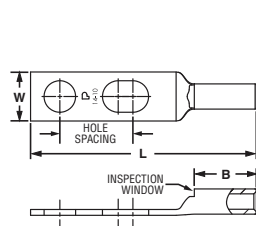


Figure 4: Slotted, Straight

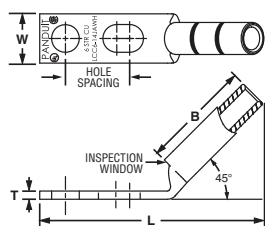


Figure 5: Slotted, 45° Bent

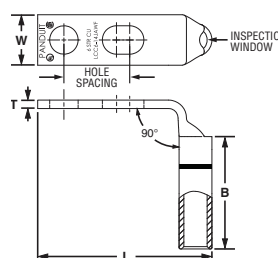


Figure 6: Slotted, 90° Bent

| Part Number     | Figure No. | Copper Conductor Size                | Stud Hole Size In. | Stud Hole Spacing In. | Figure Dimensions In. |      |      | Panduit Crimping Tool‡                 | Panduit Die Color and Die No.‡ | Wire Strip Length In. | Busbar Pattern^ | Std. Pkg. Qty. |
|-----------------|------------|--------------------------------------|--------------------|-----------------------|-----------------------|------|------|--|--------------------------------|-----------------------|-----------------|----------------|
|                 |            |                                      |                    |                       | W                     | B    | L    |  |                                |                       |                 |                |
| LCC10-14JAW-L*  | 4          | #14 – #10 AWG STR, #12 – #10 AWG SOL | 1/4                | 0.50 – 0.63           | 0.42                  | 0.53 | 1.93 | CT-1570, CT-1701                       | —                              | 9/16                  | B               | 50             |
| LCC10-14JAWH-L* | 5          |                                      | 1/4                | 0.50 – 0.63           | 0.42                  | 0.53 | 1.78 |  |                                |                       | B               | 50             |
| LCC10-14JAWF-L* | 6          |                                      | 1/4                | 0.50 – 0.63           | 0.42                  | 0.53 | 1.56 |  |                                |                       | B               | 50             |
| LCC10-14AW-L*   | 1          |                                      | 1/4                | 0.63                  | 0.42                  | 0.53 | 1.93 |  |                                |                       | B               | 50             |
| LCC8-10AW-L     | 1          | #8 AWG                               | #10                | 0.63                  | 0.41                  | 0.70 | 2.01 | CT-1700, CT-930, CT-2930/L, CT-2930/LE | Red P21                        | 3/4                   | B               | 50             |
| LCC8-14AWH-L    | 2          |                                      | 1/4                | 0.63                  | 0.48                  | 0.70 | 1.91 |  |                                |                       | B               | 50             |
| LCC8-14AWF-L    | 3          |                                      | 1/4                | 0.63                  | 0.48                  | 0.70 | 1.61 |  |                                |                       | B               | 50             |
| LCC8-38DW-L     | 1          |                                      | 3/8                | 1.00                  | 0.60                  | 0.70 | 2.70 |  |                                |                       | B, D            | 50             |

‡See pages M.50 – M.53 for Panduit and competitor tool and die information.

\*Not tested to NEBS Level 3 requirements.

\*\*Consult cable manufacturer for voltage stress relief instructions with applications greater than 2000 V.

^See page M.30 for busbar patterns.

◆NEMA hole sizes and spacing.



### Code Conductor, Two-Hole, Long Barrel with Window Lug (continued)

| Part Number   | Figure No. | Copper Conductor Size       | Stud Hole Size In. | Stud Hole Spacing In. | Figure Dimensions In. |      |      | Panduit Crimping Tool‡                 | Panduit Die Color and Die No.‡ | Wire Strip Length In. | Busbar Pattern^ | Std. Pkg. Qty. |
|---------------|------------|-----------------------------|--------------------|-----------------------|-----------------------|------|------|--|--------------------------------|-----------------------|-----------------|----------------|
|               |            |                             |                    |                       | W                     | B    | L    |  |                                |                       |                 |                |
| LCC6-10ABW-L  | 4          | #6 AWG                      | #10                | 0.63 – 0.75           | 0.46                  | 1.07 | 2.52 | CT-1700, CT-930, CT-2930/L, CT-2930/LE | Blue P24                       | 1 1/8                 | B               | 50             |
| LCC6-14JAW-L  | 4          |                             | 1/4                | 0.50 – 0.63           | 0.48                  | 1.07 | 2.49 |  |                                |                       | B               | 50             |
| LCC6-14JAWH-L | 5          |                             | 1/4                | 0.50 – 0.63           | 0.48                  | 1.07 | 2.08 |  |                                |                       | B               | 50             |
| LCC6-14JAWF-L | 6          |                             | 1/4                | 0.50 – 0.63           | 0.48                  | 1.07 | 1.66 |  |                                |                       | B               | 50             |
| LCC6-14AW-L   | 1          |                             | 1/4                | 0.63                  | 0.48                  | 1.07 | 2.49 |  |                                |                       | B               | 50             |
| LCC6-38DW-L   | 1          |                             | 3/8                | 1.00                  | 0.62                  | 1.07 | 3.08 |  |                                |                       | B, D            | 50             |
| LCC6-12W-L    | 1          |                             | 1/2                | 1.75                  | 0.75                  | 1.07 | 3.97 |  |                                |                       | 1 1/8           | N              |
| LCC4-14AW-L   | 1          | #4 – #3 AWG STR, #2 AWG SOL | 1/4                | 0.63                  | 0.55                  | 1.05 | 2.50 | CT-1700, CT-930, CT-2930/L, CT-2930/LE | Gray P29                       | 1 1/8                 | B               | 50             |
| LCC4-38DW-L   | 1          |                             | 3/8                | 1.00                  | 0.62                  | 1.05 | 3.09 |  |                                |                       | B, D            | 50             |
| LCC4-12W-L    | 1          |                             | 1/2                | 1.75                  | 0.75                  | 1.05 | 4.01 |  |                                |                       | 1 1/8           | N              |
| LCC2-14AW-Q   | 1          | #2 AWG                      | 1/4                | 0.63                  | 0.60                  | 1.16 | 2.67 | CT-1700, CT-930, CT-2930/L, CT-2930/LE | Brown P33                      | 1 1/4                 | B               | 25             |
| LCC2-38DW-Q   | 1          |                             | 3/8                | 1.00                  | 0.66                  | 1.16 | 3.24 |  |                                |                       | B, D            | 25             |
| LCC2-12W-Q    | 1          |                             | 1/2                | 1.75                  | 0.75                  | 1.16 | 4.41 |  |                                |                       | N               | 25             |
| LCC1/0-14AW-X | 1          | 1/0 AWG                     | 1/4                | 0.63                  | 0.76                  | 1.44 | 3.07 | CT-930, CT-2930/L, CT-2930/LE          | Pink P42                       | 1 1/2                 | B               | 10             |
| LCC1/0-38DW-X | 1          |                             | 3/8                | 1.00                  | 0.76                  | 1.44 | 3.57 |  |                                |                       | B, D            | 10             |
| LCC1/0-12W-X  | 1          |                             | 1/2                | 1.75                  | 0.80                  | 1.44 | 4.74 |  |                                |                       | N               | 10             |
| LCC2/0-14AW-X | 1          | 2/0 AWG                     | 1/4                | 0.63                  | 0.85                  | 1.50 | 3.23 | CT-930, CT-2930/L, CT-2930/LE          | Black P45                      | 1 9/16                | B               | 10             |
| LCC2/0-38DW-X | 1          |                             | 3/8                | 1.00                  | 0.85                  | 1.50 | 3.67 |  |                                |                       | B, D            | 10             |
| LCC2/0-12W-X  | 1          |                             | 1/2                | 1.75                  | 0.85                  | 1.50 | 4.83 |  |                                |                       | N               | 10             |
| LCC3/0-38DW-X | 1          | 3/0 AWG                     | 3/8                | 1.00                  | 0.96                  | 1.50 | 3.70 | CT-930, CT-2930/L, CT-2930/LE          | Orange P50                     | 1 9/16                | B, D            | 10             |
| LCC3/0-12W-X  | 1          |                             | 1/2                | 1.75                  | 0.96                  | 1.50 | 4.87 |  |                                |                       | N               | 10             |
| LCC4/0-38DW-X | 1          | 4/0 AWG                     | 3/8                | 1.00                  | 1.06                  | 1.56 | 3.81 | CT-930, CT-2930/L, CT-2930/LE          | Purple P54                     | 1 5/8                 | N               | 10             |
| LCC4/0-12W-X  | 1          |                             | 1/2                | 1.75                  | 0.96                  | 1.56 | 3.81 |  |                                |                       | N               | 10             |
| LCC250-38DW-X | 1          | 250 kcmil                   | 3/8                | 1.00                  | 1.17                  | 1.61 | 3.89 | CT-930, CT-2930/L, CT-2930/LE          | Yellow P62                     | 1 11/16               | B, D            | 10             |
| LCC250-12W-X  | 1          |                             | 1/2                | 1.75                  | 1.17                  | 1.61 | 4.12 |  |                                |                       | N               | 10             |

‡See pages M.50 – M.53 for Panduit and competitor tool and die information.

\*Not tested to NEBS Level 3 requirements.

\*\*Consult cable manufacturer for voltage stress relief instructions with applications greater than 2000 V.

^See page M.30 for busbar patterns.

◆NEMA hole sizes and spacing.

Table continues on page M.38

**Code Conductor, Two-Hole, Long Barrel with Window Lug  
(continued)**

| Part Number    | Figure No. | Copper Conductor Size | Stud Hole Size In. | Stud Hole Spacing In. | Figure Dimensions In. |      |      | Panduit Crimping Tool‡              | Panduit Die Color and Die No.‡ | Wire Strip Length In. | Busbar Pattern^ | Std. Pkg. Qty. |
|----------------|------------|-----------------------|--------------------|-----------------------|-----------------------|------|------|-------------------------------------|--------------------------------|-----------------------|-----------------|----------------|
|                |            |                       |                    |                       | W                     | B    | L    |                                     |                                |                       |                 |                |
| ◆ LCC350-12W-X | 1          | 350 kcmil             | 1/2                | 1.75                  | 1.28                  | 2.24 | 5.76 | CT-930,<br>CT-2930/L,<br>CT-2930/LE | Red P71                        | 2 5/16                | N               | 10             |
| LCC350-38DW-X  | 1          |                       | 3/8                | 1.00                  | 1.28                  | 2.24 | 4.58 |                                     | Red P71                        |                       | B, D            | 10             |
| ◆ LCC400-12W-6 | 1          | 400 kcmil             | 1/2                | 1.75                  | 1.28                  | 2.30 | 5.84 | CT-930,<br>CT-2930/L,<br>CT-2930/LE | Blue P76                       | 2 3/8                 | N               | 6              |
| LCC400-38DW-6  | 1          |                       | 3/8                | 1.00                  | 1.39                  | 2.30 | 4.66 |                                     | Blue P76                       |                       | B, D            | 6              |
| ◆ LCC500-12W-6 | 1          | 500 kcmil             | 1/2                | 1.75                  | 1.54                  | 2.50 | 6.12 | CT-930,<br>CT-2930/L,<br>CT-2930/LE | Brown P87                      | 2 9/16                | N               | 6              |
| LCC500-38DW-6  | 1          |                       | 3/8                | 1.00                  | 1.54                  | 2.50 | 4.94 |                                     | Brown P87                      |                       | B, D            | 6              |
| ◆ LCC600-12W-6 | 1          | 600 kcmil             | 1/2                | 1.75                  | 1.70                  | 2.69 | 6.36 | CT-930,<br>CT-2930/L,<br>CT-2930/LE | Green P94                      | 2 3/4                 | N               | 6              |
| LCC600-38DW-6  | 1          |                       | 3/8                | 1.00                  | 1.70                  | 2.69 | 5.18 |                                     | Green P94                      |                       | B, D            | 6              |
| ◆ LCC750-12W-6 | 1          | 750 kcmil             | 1/2                | 1.75                  | 1.89                  | 2.88 | 6.65 | CT-930,<br>CT-2930/L,<br>CT-2930/LE | Black P106                     | 2 15/16               | N               | 6              |
| LCC750-38DW-6  | 1          |                       | 3/8                | 1.00                  | 1.89                  | 2.88 | 5.71 |                                     | Black P106                     |                       | B, D            | 6              |

‡See pages M.50 – M.53 for Panduit and competitor tool and die information.

\*Not tested to NEBS Level 3 requirements.

\*\*Consult cable manufacturer for voltage stress relief instructions with applications greater than 2000 V.

^See page M.30 for busbar patterns.

◆NEMA hole sizes and spacing.