

| |
|----------------|
| Catalog Number |
| Notes |
| Type |

FEATURES & SPECIFICATIONS

INTENDED USE — LBL LED wraparound provides a digital lighting platform to deliver general ambient lighting for surface-mount applications. The LED system delivers long life and excellent color to ensure a quality, low-maintenance lighting installation. Ideal for closets, storage rooms, hallways, stairwells and offices.

CONSTRUCTION — Metal parts are die formed from code-gauge steel. Prismatic diffuser is 100% acrylic with sonically welded luminous ends. Continuous side flanges on fixture body provide light trap and continuous diffuser support to prevent accidental opening and simplify maintenance.

Finish: Five-stage iron phosphate pretreatment assures superior paint adhesion and rust resistance.

Painted parts finished with high-gloss, high-reflectivity baked white polyester enamel (low VOC).

OPTICS — Curved prismatic diffuser with linear side prisms and highly transmissive overlay minimizes lamp image and provides high-angle brightness control. Luminous end plates soften appearance for improved aesthetics.

ELECTRICAL — Long-life LEDs, coupled with high-efficiency drivers, provide superior quantity and quality of illumination for extended service life. 90% LED lumen maintenance at 50,000 hours (L90/50,000). The LEDs have a CRI of 82.

eldoLED driver options deliver choice of dimming range and choices for control, while assuring flicker-free, low-current inrush, 89% efficiency and low EMI.

Step-level dimming option allows system to be switched to 50% power for compliance with common energy codes while maintaining fixture appearance.

CONTROLS — Pair the LBL with the fixture mount Sensor Switch LSXR sensor for additional energy savings when the space is unoccupied. The LSXRHL sensor dims the fixture down to a low-level setting when there is no occupancy. This option is ideal for stairwells, back rooms, and closets due to the low occupancy level in those spaces.

Optional nLight® embedded controls continuously monitor system performance, allow for constant lumen management / compensation function, facilitate simple “plug-and-play” network and controls upgrading via Cat-5 cable. Ballast disconnect provided where required to comply with US and Canadian codes.

LISTINGS — CSA certified to meet U.S. and Canadian standards. Damp listed.

DesignLights Consortium® (DLC) Premium qualified product. Not all versions of this product may be DLC Premium qualified. Please check the DLC Qualified Products List at www.designlights.org/QPL to confirm which versions are qualified.

WARRANTY — 5-year limited warranty. Complete warranty terms located at

www.acuitybrands.com/CustomerResources/Terms_and_conditions

Note: Actual performance may differ as a result of end-user environment and application.

All values are design or typical values, measured under laboratory conditions at 25 °C.

Specifications subject to change without notice.

Low-Profile Curved-Basket LED Wraparound

LBL4



4' LENGTH, NARROW HOUSING
LED



eldoLED®



CSA+ Capable Luminaire

This item is an A+ capable luminaire, which has been designed and tested to provide consistent color appearance and out-of-the-box control compatibility with simple commissioning.

- All configurations of this luminaire meet the Acuity Brands' specification for chromatic consistency
- This luminaire is part of an A+ Certified solution for nLight® control networks when ordered with drivers marked by a **shaded background***
- This luminaire is part of an A+ Certified solution for nLight control networks, providing advanced control functionality at the luminaire level, when selection includes driver and control options marked by a **shaded background***

To learn more about A+, visit www.acuitybrands.com/aplus.

*See ordering tree for details

LBL4 LED Wraparound



A+ Capable options indicated by this color background.

ORDERING INFORMATION

Lead times will vary depending on options selected. Consult with your sales representative.

Example: LBL4 4000LM 80CRI 35K MIN10 GZT MVOLT

| LBL4 | | Lumens ¹ | | CRI | | Color temperature | | Minimum Dimming Level | | Control | | Voltage | |
|------|-------------|---------------------|-------------|-------|--------|-------------------|--------|-----------------------|----------------------------------|---------|-----------------------|---------|-------------------|
| LBL4 | 4' LED wrap | 3000LM | 3000 lumens | 80CRI | 80 CRI | 30K | 3000 K | MIN10 | Dims to 10% ² | GZT | Generic 0-10V Dimming | MVOLT | 120-277V |
| | | 4000LM | 4000 lumens | | | 35K | 3500 K | MIN1 | Dims to 1% ³ | ZT | eldoLED 0-10V dimming | 347 | 347V ⁵ |
| | | 4800LM | 4800 lumens | | | 40K | 4000 K | NODIM | On/off, non-dimming ⁴ | | | | |
| | | 6000LM | 6000 lumens | | | 50K | 5000 K | SLD | Step-level dimming ⁴ | NLIGHT | nLight enabled | | |
| | | 7200LM | 7200 lumens | | | | | | | | | | |

| Emergency Options | | Lumen Management | | Occupancy Control | | Occupancy Sensor Technology | | Options | |
|-------------------|---|------------------|----------------------------|-------------------|--|-----------------------------|------------------|---------|-------------------------|
| EL7L | 700 nominal lumen battery pack (non-CEC compliant) ⁶ | (blank) | None | LSXRHL | Sensor Switch [®] fixture mount sensor with High/Low occupancy operation ^{8,9} | PIR | Passive Infrared | USPOM | US Point of Manufacture |
| EL14L | 1400 nominal lumen battery pack (non-CEC compliant) ⁶ | CL80 | Constant lumen output, 80% | LSXR10 | Sensor Switch [®] fixture mount sensor with on/off occupancy operation ⁸ | | | | |
| E10WLCP | EM Self-Diagnostic battery pack, 10W Constant Power, CEC compliant ⁶ | | | | | | | | |
| EMG | for use with nLight on generator supply EM power ⁷ | | | | | | | | |

ORDERING INFORMATION

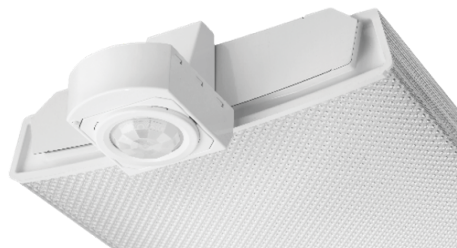
| Catalog number | UPC | Description | Lumens | Color temperature | Lens type | Voltage | Wattage ² | Pallet qty | Standard carton qty. |
|--------------------------|--------------|-------------------|--------|-------------------|-----------------------|---------|----------------------|------------|----------------------|
| LBL4 LP835 ¹⁰ | 190887819199 | 4' LED Wraparound | 4,188 | 3500 K | Patterned #12 acrylic | 120-277 | 32 | 56 | 1 |
| LBL4 LP840 ¹⁰ | 190887819359 | 4' LED Wraparound | 4,253 | 4000 K | Patterned #12 acrylic | 120-277 | 32 | 56 | 1 |
| LBL4 347 LP835 | 190887856682 | 4' LED Wraparound | 4,188 | 3500 K | Patterned #12 acrylic | 347 | 32 | 56 | 1 |
| LBL4 347 LP840 | 190887856705 | 4' LED Wraparound | 4,253 | 4000 K | Patterned #12 acrylic | 347 | 32 | 56 | 1 |

Notes

- 1 Approximate lumen output.
- 2 Requires GZT or ZT control.
- 3 Requires GZT, ZT, or NLIGHT control.
- 4 Not available with Control or Sensor Options.
- 5 Not available with SLD option.
- 6 Not available with 7200LM option.
- 7 nLight EMG option requires a connection to existing nLight network. Power is provided from a separate N80 or N100 enabled fixture. Requires NLIGHT.
- 8 Requires MIN1, ZT and PIR options.
- 9 Dims to approximately 10% light output when unoccupied.
- 10 Product in stock.

LBL4 LED Wraparound

| Performance Data | | | |
|------------------|--------|-------------|-----|
| Lumen Package | Lumens | Input Watts | LPW |
| 3000LM 80CRI 30K | 3167 | 25.6 | 124 |
| 3000LM 80CRI 35K | 3237 | 25.6 | 127 |
| 3000LM 80CRI 40K | 3288 | 25.6 | 129 |
| 3000LM 80CRI 50K | 3409 | 25.6 | 133 |
| 4000LM 80CRI 30K | 4097 | 32.4 | 126 |
| 4000LM 80CRI 35K | 4188 | 32.4 | 129 |
| 4000LM 80CRI 40K | 4253 | 32.4 | 131 |
| 4000LM 80CRI 50K | 4410 | 32.4 | 136 |
| 4800LM 80CRI 30K | 4695 | 40.5 | 116 |
| 4800LM 80CRI 35K | 4799 | 40.5 | 119 |
| 4800LM 80CRI 40K | 4874 | 40.5 | 120 |
| 4800LM 80CRI 50K | 5053 | 40.5 | 125 |
| 6000LM 80CRI 30K | 5968 | 49.7 | 120 |
| 6000LM 80CRI 35K | 6101 | 49.7 | 123 |
| 6000LM 80CRI 40K | 6196 | 49.7 | 125 |
| 6000LM 80CRI 50K | 6424 | 49.7 | 129 |
| 7200LM 80CRI 30K | 7066 | 62.0 | 114 |
| 7200LM 80CRI 35K | 7224 | 62.0 | 117 |
| 7200LM 80CRI 40K | 7336 | 62.0 | 118 |
| 7200LM 80CRI 50K | 7606 | 62.0 | 123 |



| Sensor Switch L5XRHL Sensor | |
|-----------------------------|--|
| Lens type: | 10 - Low Mount 360° coverage |
| Dimming: | HL - High/Low Occupancy operation |
| Min Dim Level: | 3V - approximately 10% light output when unoccupied |
| Time Delay: | 5M - 5 minutes |

How to Estimate Delivered Lumens in Emergency Mode

Use the formula below to estimate the delivered lumens in emergency mode.

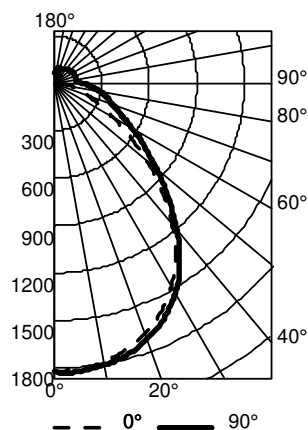
$$\text{Delivered Lumens} = 1.25 \times P \times \text{LPW}$$

P = Output power of emergency driver. P = 10W for E10WLCP option.

LPW = Lumen per watt rating of the luminaire. LPW information available in Performance Data section.

PHOTOMETRICS

LBL4 4800LM 80CRI 35K



| CP Summary | | |
|------------|------|------|
| | 0° | 90° |
| 0° | 1823 | 1823 |
| 5° | 1813 | 1828 |
| 15° | 1744 | 1776 |
| 25° | 1594 | 1640 |
| 35° | 1332 | 1384 |
| 45° | 958 | 1020 |
| 55° | 576 | 693 |
| 65° | 302 | 464 |
| 75° | 177 | 343 |
| 85° | 58 | 233 |
| 90° | 5 | 177 |

| RFR | Coefficients of Utilization | | | | | | | | | |
|-----|-----------------------------|-----|-----|-----|-----|-----|-----|-----|-----|-----|
| | pc | 80% | | | 70% | | | 50% | | |
| | | pw | 70% | 50% | 30% | 50% | 30% | 10% | 50% | 30% |
| 0 | 116 | 116 | 116 | 112 | 112 | 112 | 105 | 105 | 105 | |
| 1 | 106 | 102 | 98 | 98 | 95 | 91 | 92 | 89 | 86 | |
| 2 | 97 | 90 | 83 | 87 | 81 | 76 | 81 | 77 | 73 | |
| 3 | 89 | 80 | 72 | 77 | 70 | 65 | 73 | 67 | 62 | |
| 4 | 82 | 71 | 63 | 69 | 61 | 56 | 65 | 59 | 54 | |
| 5 | 76 | 64 | 56 | 62 | 54 | 49 | 59 | 52 | 47 | |
| 6 | 71 | 58 | 50 | 56 | 49 | 43 | 54 | 47 | 42 | |
| 7 | 66 | 53 | 45 | 52 | 44 | 38 | 49 | 42 | 37 | |
| 8 | 61 | 48 | 40 | 47 | 40 | 34 | 45 | 38 | 34 | |
| 9 | 57 | 45 | 37 | 44 | 36 | 31 | 42 | 35 | 30 | |
| 10 | 54 | 41 | 34 | 40 | 33 | 28 | 39 | 32 | 28 | |

| Zonal Lumen Summary | | | |
|---------------------|--------|--------|-----------|
| Zone | Lumens | % Lamp | % Fixture |
| 0° - 30° | 1400 | 29.2 | 29.2 |
| 0° - 40° | 2229 | 46.4 | 46.4 |
| 0° - 60° | 3509 | 73.1 | 73.1 |
| 0° - 90° | 4250 | 88.6 | 88.6 |
| 90° - 120° | 266 | 5.5 | 5.5 |
| 90° - 130° | 348 | 7.3 | 7.3 |
| 90° - 150° | 478 | 10.0 | 10.0 |
| 90° - 180° | 549 | 11.4 | 11.4 |
| 0° - 180° | 4799 | 100.0 | 100.0 |

MOUNTING DATA

Suspension Kit Ceiling Types: F1 for use with most T-bar and screw slot grid ceiling applications. Designed for on-grid and off-grid installations.

F2 for use with recessed or surface-mount horizontal J-box applications.

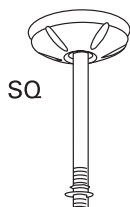
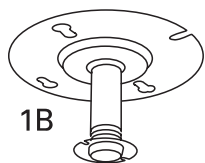
For unit or row installation; surface or suspend mounting.

Individual installation — One double-stem or two single-stem hangers required.

For aircraft cable, one STACG_, STACGF_, or STACGE_ required for each suspension point.

Note: 2' configurations with emergency option cannot be stem mounted.

See ACCESSORIES below for hanging devices.



DIMENSIONS

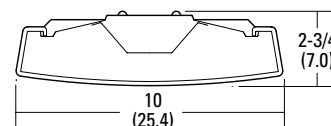
All dimensions are inches (centimeters) unless otherwise noted.

Specifications

Length: 48 (122.0)

Width: 10 (25.4)

Depth: 2-3/4 (7.0)



All dimensions are inches (centimeters) unless otherwise indicated.

| |
|----------------|
| Catalog Number |
| Notes |
| Type |

FEATURES & SPECIFICATIONS

INTENDED USE — LBL LED wraparound provides a digital lighting platform to deliver general ambient lighting for surface-mount applications. The LED system delivers long life and excellent color to ensure a quality, low-maintenance lighting installation. Ideal for closets, storage rooms, hallways, stairwells and offices.

CONSTRUCTION — Metal parts are die formed from code-gauge steel. Prismatic diffuser is 100% acrylic with sonically welded luminous ends. Continuous side flanges on fixture body provide light trap and continuous diffuser support to prevent accidental opening and simplify maintenance.

Finish: Five-stage iron phosphate pretreatment assures superior paint adhesion and rust resistance.

Painted parts finished with high-gloss, high-reflectivity baked white polyester enamel (low VOC).

OPTICS — Curved prismatic diffuser with linear side prisms and highly transmissive overlay minimizes lamp image and provides high-angle brightness control. Luminous end plates soften appearance for improved aesthetics.

ELECTRICAL — Long-life LEDs, coupled with high-efficiency drivers, provide superior quantity and quality of illumination for extended service life. 90% LED lumen maintenance at 50,000 hours (L90/50,000). The LEDs have a CRI of 82.

eldoLED driver options deliver choice of dimming range and choices for control, while assuring flicker-free, low-current inrush, 89% efficiency and low EMI.

Step-level dimming option allows system to be switched to 50% power for compliance with common energy codes while maintaining fixture appearance.

CONTROLS — Pair the LBL with the fixture mount Sensor Switch LSXR sensor for additional energy savings when the space is unoccupied. The LSXRHL sensor dims the fixture down to a low-level setting when there is no occupancy. This option is ideal for stairwells, back rooms, and closets due to the low occupancy level in those spaces.

Optional nLight® embedded controls continuously monitor system performance, allow for constant lumen management / compensation function, facilitate simple “plug-and-play” network and controls upgrading via Cat-5 cable. Ballast disconnect provided where required to comply with US and Canadian codes.

LISTINGS — CSA certified to meet U.S. and Canadian standards. Damp listed.

DesignLights Consortium® (DLC) Premium qualified product. Not all versions of this product may be DLC Premium qualified. Please check the DLC Qualified Products List at www.designlights.org/QPL to confirm which versions are qualified.

WARRANTY — 5-year limited warranty. Complete warranty terms located at

www.acuitybrands.com/CustomerResources/Terms_and_conditions

Note: Actual performance may differ as a result of end-user environment and application.

All values are design or typical values, measured under laboratory conditions at 25 °C.

Specifications subject to change without notice.

Low-Profile Curved-Basket LED Wraparound

LBL4



4' LENGTH, NARROW HOUSING
LED



eldoLED®



CSA+ Capable Luminaire

This item is an A+ capable luminaire, which has been designed and tested to provide consistent color appearance and out-of-the-box control compatibility with simple commissioning.

- All configurations of this luminaire meet the Acuity Brands' specification for chromatic consistency
- This luminaire is part of an A+ Certified solution for nLight® control networks when ordered with drivers marked by a **shaded background***
- This luminaire is part of an A+ Certified solution for nLight control networks, providing advanced control functionality at the luminaire level, when selection includes driver and control options marked by a **shaded background***

To learn more about A+, visit www.acuitybrands.com/aplus.

*See ordering tree for details

LBL4 LED Wraparound



A+ Capable options indicated by this color background.

ORDERING INFORMATION

Lead times will vary depending on options selected. Consult with your sales representative.

Example: LBL4 4000LM 80CRI 35K MIN10 GZT MVOLT

| LBL4 | | Lumens ¹ | | CRI | | Color temperature | | Minimum Dimming Level | | Control | | Voltage | |
|------|-------------|---------------------|-------------|-------|--------|-------------------|--------|-----------------------|----------------------------------|---------|-----------------------|---------|-------------------|
| LBL4 | 4' LED wrap | 3000LM | 3000 lumens | 80CRI | 80 CRI | 30K | 3000 K | MIN10 | Dims to 10% ² | GZT | Generic 0-10V Dimming | MVOLT | 120-277V |
| | | 4000LM | 4000 lumens | | | 35K | 3500 K | MIN1 | Dims to 1% ³ | ZT | eldoLED 0-10V dimming | 347 | 347V ⁵ |
| | | 4800LM | 4800 lumens | | | 40K | 4000 K | NODIM | On/off, non-dimming ⁴ | | | | |
| | | 6000LM | 6000 lumens | | | 50K | 5000 K | SLD | Step-level dimming ⁴ | NLIGHT | nLight enabled | | |
| | | 7200LM | 7200 lumens | | | | | | | | | | |

| Emergency Options | | Lumen Management | | Occupancy Control | | Occupancy Sensor Technology | | Options | |
|-------------------|---|------------------|----------------------------|-------------------|--|-----------------------------|------------------|---------|-------------------------|
| EL7L | 700 nominal lumen battery pack (non-CEC compliant) ⁶ | (blank) | None | LSXRHL | Sensor Switch [®] fixture mount sensor with High/Low occupancy operation ^{8,9} | PIR | Passive Infrared | USPOM | US Point of Manufacture |
| EL14L | 1400 nominal lumen battery pack (non-CEC compliant) ⁶ | CL80 | Constant lumen output, 80% | LSXR10 | Sensor Switch [®] fixture mount sensor with on/off occupancy operation ⁸ | | | | |
| E10WLCP | EM Self-Diagnostic battery pack, 10W Constant Power, CEC compliant ⁶ | | | | | | | | |
| EMG | for use with nLight on generator supply EM power ⁷ | | | | | | | | |

ORDERING INFORMATION

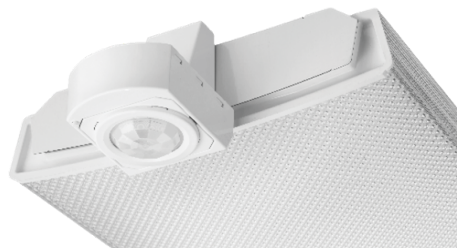
| Catalog number | UPC | Description | Lumens | Color temperature | Lens type | Voltage | Wattage ² | Pallet qty | Standard carton qty. |
|--------------------------|--------------|-------------------|--------|-------------------|-----------------------|---------|----------------------|------------|----------------------|
| LBL4 LP835 ¹⁰ | 190887819199 | 4' LED Wraparound | 4,188 | 3500 K | Patterned #12 acrylic | 120-277 | 32 | 56 | 1 |
| LBL4 LP840 ¹⁰ | 190887819359 | 4' LED Wraparound | 4,253 | 4000 K | Patterned #12 acrylic | 120-277 | 32 | 56 | 1 |
| LBL4 347 LP835 | 190887856682 | 4' LED Wraparound | 4,188 | 3500 K | Patterned #12 acrylic | 347 | 32 | 56 | 1 |
| LBL4 347 LP840 | 190887856705 | 4' LED Wraparound | 4,253 | 4000 K | Patterned #12 acrylic | 347 | 32 | 56 | 1 |

Notes

- 1 Approximate lumen output.
- 2 Requires GZT or ZT control.
- 3 Requires GZT, ZT, or NLIGHT control.
- 4 Not available with Control or Sensor Options.
- 5 Not available with SLD option.
- 6 Not available with 7200LM option.
- 7 nLight EMG option requires a connection to existing nLight network. Power is provided from a separate N80 or N100 enabled fixture. Requires NLIGHT.
- 8 Requires MIN1, ZT and PIR options.
- 9 Dims to approximately 10% light output when unoccupied.
- 10 Product in stock.

LBL4 LED Wraparound

| Performance Data | | | |
|------------------|--------|-------------|-----|
| Lumen Package | Lumens | Input Watts | LPW |
| 3000LM 80CRI 30K | 3167 | 25.6 | 124 |
| 3000LM 80CRI 35K | 3237 | 25.6 | 127 |
| 3000LM 80CRI 40K | 3288 | 25.6 | 129 |
| 3000LM 80CRI 50K | 3409 | 25.6 | 133 |
| 4000LM 80CRI 30K | 4097 | 32.4 | 126 |
| 4000LM 80CRI 35K | 4188 | 32.4 | 129 |
| 4000LM 80CRI 40K | 4253 | 32.4 | 131 |
| 4000LM 80CRI 50K | 4410 | 32.4 | 136 |
| 4800LM 80CRI 30K | 4695 | 40.5 | 116 |
| 4800LM 80CRI 35K | 4799 | 40.5 | 119 |
| 4800LM 80CRI 40K | 4874 | 40.5 | 120 |
| 4800LM 80CRI 50K | 5053 | 40.5 | 125 |
| 6000LM 80CRI 30K | 5968 | 49.7 | 120 |
| 6000LM 80CRI 35K | 6101 | 49.7 | 123 |
| 6000LM 80CRI 40K | 6196 | 49.7 | 125 |
| 6000LM 80CRI 50K | 6424 | 49.7 | 129 |
| 7200LM 80CRI 30K | 7066 | 62.0 | 114 |
| 7200LM 80CRI 35K | 7224 | 62.0 | 117 |
| 7200LM 80CRI 40K | 7336 | 62.0 | 118 |
| 7200LM 80CRI 50K | 7606 | 62.0 | 123 |



| Sensor Switch L5XRHL Sensor | |
|-----------------------------|--|
| Lens type: | 10 - Low Mount 360° coverage |
| Dimming: | HL - High/Low Occupancy operation |
| Min Dim Level: | 3V - approximately 10% light output when unoccupied |
| Time Delay: | 5M - 5 minutes |

How to Estimate Delivered Lumens in Emergency Mode

Use the formula below to estimate the delivered lumens in emergency mode.

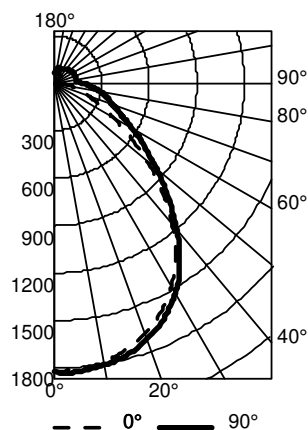
$$\text{Delivered Lumens} = 1.25 \times P \times \text{LPW}$$

P = Output power of emergency driver. P = 10W for E10WLCP option.

LPW = Lumen per watt rating of the luminaire. LPW information available in Performance Data section.

PHOTOMETRICS

LBL4 4800LM 80CRI 35K



| CP Summary | | |
|------------|------|------|
| | 0° | 90° |
| 0° | 1823 | 1823 |
| 5° | 1813 | 1828 |
| 15° | 1744 | 1776 |
| 25° | 1594 | 1640 |
| 35° | 1332 | 1384 |
| 45° | 958 | 1020 |
| 55° | 576 | 693 |
| 65° | 302 | 464 |
| 75° | 177 | 343 |
| 85° | 58 | 233 |
| 90° | 5 | 177 |

| R _{CR} | Coefficients of Utilization | | | | | | | | | |
|-----------------|-----------------------------|-----|-----|-----|-----|-----|-----|-----|-----|-----|
| | pf | 80% | | | 70% | | | 50% | | |
| | | pc | 70% | 50% | 30% | 50% | 30% | 10% | 50% | 30% |
| 0 | 116 | 116 | 116 | 112 | 112 | 112 | 105 | 105 | 105 | |
| 1 | 106 | 102 | 98 | 98 | 95 | 91 | 92 | 89 | 86 | |
| 2 | 97 | 90 | 83 | 87 | 81 | 76 | 81 | 77 | 73 | |
| 3 | 89 | 80 | 72 | 77 | 70 | 65 | 73 | 67 | 62 | |
| 4 | 82 | 71 | 63 | 69 | 61 | 56 | 65 | 59 | 54 | |
| 5 | 76 | 64 | 56 | 62 | 54 | 49 | 59 | 52 | 47 | |
| 6 | 71 | 58 | 50 | 56 | 49 | 43 | 54 | 47 | 42 | |
| 7 | 66 | 53 | 45 | 52 | 44 | 38 | 49 | 42 | 37 | |
| 8 | 61 | 48 | 40 | 47 | 40 | 34 | 45 | 38 | 34 | |
| 9 | 57 | 45 | 37 | 44 | 36 | 31 | 42 | 35 | 30 | |
| 10 | 54 | 41 | 34 | 40 | 33 | 28 | 39 | 32 | 28 | |

| Zonal Lumen Summary | | | |
|---------------------|--------|--------|-----------|
| Zone | Lumens | % Lamp | % Fixture |
| 0° - 30° | 1400 | 29.2 | 29.2 |
| 0° - 40° | 2229 | 46.4 | 46.4 |
| 0° - 60° | 3509 | 73.1 | 73.1 |
| 0° - 90° | 4250 | 88.6 | 88.6 |
| 90° - 120° | 266 | 5.5 | 5.5 |
| 90° - 130° | 348 | 7.3 | 7.3 |
| 90° - 150° | 478 | 10.0 | 10.0 |
| 90° - 180° | 549 | 11.4 | 11.4 |
| 0° - 180° | 4799 | 100.0 | 100.0 |

MOUNTING DATA

Suspension Kit Ceiling Types: F1 for use with most T-bar and screw slot grid ceiling applications. Designed for on-grid and off-grid installations.

F2 for use with recessed or surface-mount horizontal J-box applications.

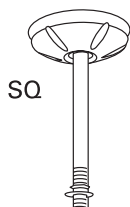
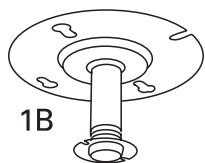
For unit or row installation; surface or suspend mounting.

Individual installation — One double-stem or two single-stem hangers required.

For aircraft cable, one STACG_, STACGF_, or STACGE_ required for each suspension point.

Note: 2' configurations with emergency option cannot be stem mounted.

See ACCESSORIES below for hanging devices.



DIMENSIONS

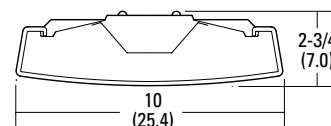
All dimensions are inches (centimeters) unless otherwise noted.

Specifications

Length: 48 (122.0)

Width: 10 (25.4)

Depth: 2-3/4 (7.0)



All dimensions are inches (centimeters) unless otherwise indicated.