

Copper Mechanical Connectors

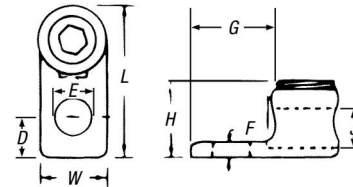
Type L — Single-Conductor, One-Hole Mount

- Cat. Nos. L400 and L650 cast from high-strength bronze alloy
- Cat. Nos. L35, L70, L125 and L250 cold forged from pure electrolytic copper with 99% conductivity



CAT. NO.		CONDUCTOR RANGE		DIMENSIONS (IN.)								
SOCKET	HEX	MAX.	MIN.	L	W	H	F	D	J	E	G	
L35*	—	8 Str.	14 Sol.	13/16	3/8	3/8	3/32	13/64	11/64	13/64	1/2	
L70*	—	4 Str.	14 Sol.	1 1/8	17/32	35/64	3/32	9/32	9/32	9/32	21/32	
L125BB	L125H	1/0 Str.	8 Sol.	1 1/2	47/64	3/4	3/32	3/8	27/64	21/64	21/32	
L250	L250H	250 kcmil	6 Str.	1 5/8	15/16	1 1/16	1/8	29/64	5/8	13/32	1 3/32	
L400BB	L400H	500 kcmil	4/0 Str.	3	1 13/32	1 15/32	9/32	5/8	7/8	9/16	1 5/8	
L650	L650H	1,000 kcmil	500 kcmil	4	2	2 1/16	17/32	3/4	1 1/4	9/16	2	

* Sizes L35 and L70 have screwdriver slot head screws only. UL 486A.



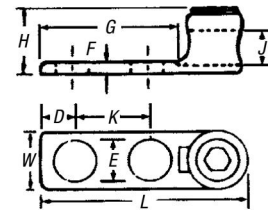
Type L — Single-Conductor, Two-Hole Mount

- For use where large contact area is required to provide more secure mounting
- Cast from high-strength bronze alloy



CAT. NO.		CONDUCTOR RANGE		DIMENSIONS (IN.)									
SOCKET	HEX	MAX.	MIN.	L	W	H	F	D	K	E	G	J	
L1252	L1252H	1/0 Str.	4 Str.	2 13/16	25/32	13/16	3/16	7/16	1	1 11/32	2	27/64	
L2502	L2502H	250 kcmil	1/0 Str.	3	1 1/16	1 1/32	15/64	7/16	1	1 13/32	1 1/8	5/8	
L4002	L4002H	500 kcmil	4/0 Str.	3 3/8	1 13/32	1 19/32	9/16	7/16	1	1 13/32	1 15/16	57/64	
L6502	L6502H	1000 kcmil	500 kcmil	4 15/16	2	2	3/8	9/16	1 1/2	9/16	2 3/4	1 1/4	

UL 486A



Type TL — Two-Conductor, Two-Hole Mount

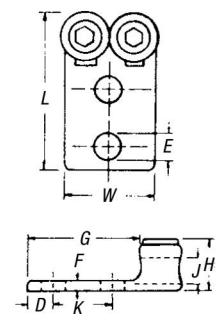
- Conveniently terminates parallel conductors



CAT. NO.		CONDUCTOR RANGE		DIMENSIONS (IN.)									
SOCKET	HEX	MAX.	MIN.	L	W	H	F	D	K	E	G	J	
TL250	TL250H	250 kcmil	1/0 Str.	4 5/16	1 7/8	1 1/16	9/32	1 3/4	5/8	9/16	3 3/16	5/8	
TL400	TL400H	500 kcmil	4/0 Str.	4 3/4	2 9/16	1 9/16	19/32	1 3/4	1 1/16	9/16	3	7/8	
TL650	TL650H	1,000 kcmil	500 kcmil	5 5/16	3 3/4	2 3/16	9/16	1 3/4	5/8	9/16	3 3/8	1 1/4	

Four hole NEMA tang on TL650.

UL 486A.



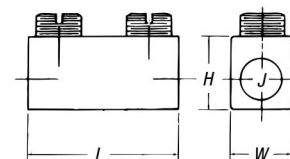
Type S — Copper End-to-End Splice Connector

- Cast of high-strength copper alloy
- Plated steel socket head set screws



CAT. NO.	CONDUCTOR RANGE		DIMENSIONS (IN.)				
	MAX.	MIN.	L	W	H	J	I
S100BB	1 Str.	4 Sol.	1 11/16	5/8	1 1/16	3/8	1 5/8
S225BB*	4/0 Str.	1 Str.	2 3/16	27/32	31/32	9/16	1 1/8
S400BB	500 kcmil	4/0 Str.	2 7/8	1 3/16	1 1/16	7/8	1 5/8

* Not UL Listed.



Copper Mechanical Connectors

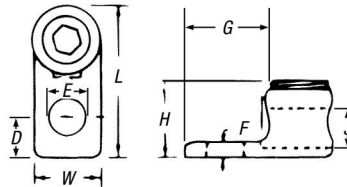
Type L — Single-Conductor, One-Hole Mount

- Cat. Nos. L400 and L650 cast from high-strength bronze alloy
- Cat. Nos. L35, L70, L125 and L250 cold forged from pure electrolytic copper with 99% conductivity



CAT. NO.		CONDUCTOR RANGE		DIMENSIONS (IN.)								
SOCKET	HEX	MAX.	MIN.	L	W	H	F	D	J	E	G	
L35*	—	8 Str.	14 Sol.	13/16	3/8	3/8	3/32	13/64	11/64	13/64	1/2	
L70*	—	4 Str.	14 Sol.	1 1/8	17/32	35/64	3/32	9/32	9/32	9/32	21/32	
L125BB	L125H	1/0 Str.	8 Sol.	1 1/2	47/64	3/4	3/32	3/8	27/64	21/64	27/32	
L250	L250H	250 kcmil	6 Str.	1 5/8	15/16	1 1/16	1/8	29/64	5/8	13/32	1 3/32	
L400BB	L400H	500 kcmil	4/0 Str.	3	1 13/32	1 15/32	9/32	5/8	7/8	9/16	1 5/8	
L650	L650H	1,000 kcmil	500 kcmil	4	2	2 1/16	17/32	3/4	1 1/4	9/16	2	

* Sizes L35 and L70 have screwdriver slot head screws only. UL 486A.



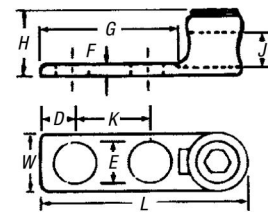
Type L — Single-Conductor, Two-Hole Mount

- For use where large contact area is required to provide more secure mounting
- Cast from high-strength bronze alloy



CAT. NO.		CONDUCTOR RANGE		DIMENSIONS (IN.)									
SOCKET	HEX	MAX.	MIN.	L	W	H	F	D	K	E	G	J	
L1252	L1252H	1/0 Str.	4 Str.	2 13/16	25/32	13/16	3/16	7/16	1	1 11/32	2	27/64	
L2502	L2502H	250 kcmil	1/0 Str.	3	1 1/16	1 1/32	15/64	7/16	1	1 13/32	1 1/8	5/8	
L4002	L4002H	500 kcmil	4/0 Str.	3 3/8	1 13/32	1 19/32	9/16	7/16	1	1 13/32	1 15/16	57/64	
L6502	L6502H	1000 kcmil	500 kcmil	4 15/16	2	2	3/8	9/16	1 1/2	9/16	2 3/4	1 1/4	

UL 486A



Type TL — Two-Conductor, Two-Hole Mount

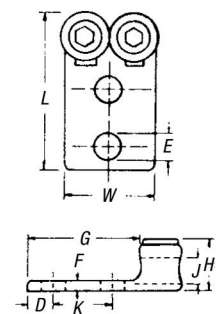
- Conveniently terminates parallel conductors



CAT. NO.		CONDUCTOR RANGE		DIMENSIONS (IN.)									
SOCKET	HEX	MAX.	MIN.	L	W	H	F	D	K	E	G	J	
TL250	TL250H	250 kcmil	1/0 Str.	4 5/16	1 7/8	1 1/16	9/32	1 3/4	5/8	9/16	3 3/16	5/8	
TL400	TL400H	500 kcmil	4/0 Str.	4 3/4	2 9/16	1 9/16	19/32	1 3/4	1 1/16	9/16	3	7/8	
TL650	TL650H	1,000 kcmil	500 kcmil	5 5/16	3 3/4	2 3/16	9/16	1 3/4	5/8	9/16	3 3/8	1 1/4	

Four hole NEMA tang on TL650.

UL 486A.



Type S — Copper End-to-End Splice Connector

- Cast of high-strength copper alloy
- Plated steel socket head set screws



CAT. NO.	CONDUCTOR RANGE		DIMENSIONS (IN.)				
	MAX.	MIN.	L	W	H	J	I
S100BB	1 Str.	4 Sol.	1 11/16	5/8	1 1/16	3/8	1 5/16
S225BB*	4/0 Str.	1 Str.	2 3/16	27/32	31/32	9/16	1 1/16
S400BB	500 kcmil	4/0 Str.	2 7/8	1 3/16	1 1/16	7/8	1 5/8

* Not UL Listed.

