

POLARIS GREY™

Pre-Insulated, Multi-Port Connectors

For Fine Stranded Wire

ITG, ITOG, IPLG, SITG Series



SPECIFICATIONS

- UL Listed 486A Wire Connector (Dry location).
- **Temperature Rating/Voltage:** CU9.
Cold temperature rated to -45 °C, rated 600V, 90 °C.
- **Wire Type:** Can be used with Class B, C, D, K, M, I of copper conductor, but is specifically designed for use with fine-stranded, flexible and extra-flexible copper conductors. This includes DLO cable and motor lead wire – excellent for use in motor connect/disconnect applications.
- **Torque Chart:** See page 34.
- **Installation Instructions:** See page 35 for extra illustrations and detailed information for assembly, mounting and installation.

FEATURES

- **Safe:** Insulated with high dielectric strength plastisol for tough mechanical protection.
- Factory applied insulation provides consistent quality and protection.
- Abrasion and chemical resistant.
- **Fast:** Eliminates the need for cover and taping – supplied with removable access plugs over the hex screws to protect against contamination.
- **Easy:** Three sizes cover 14 to 3/0 AWG.
- **Reusable:** Ideal for cabletrays, troughs, wire-ways, raceways, ducts and motor junction boxes for fine stranded conductor applications .
- For copper wire only.
- For display bags with a mounting hole for hanging, add the suffix "-B" to the part number when ordering.

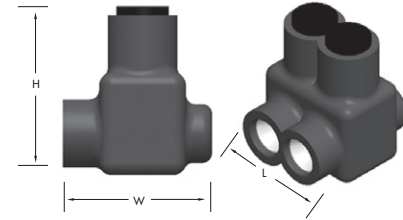


Figure varies by number of wire ports.



| CAT. NO. | NO. OF PORTS | WIRE RANGE (BY CLASSIFICATION) | | LENGTH (L) (IN.) | WIDTH (W) (IN.) | HEIGHT (H) (IN.) | MAX. TORQUE VALUE (IN./LBS.) | HEX/WRENCH SIZE (IN.) | STD. CTN. QTY. |
|-----------|--------------|--------------------------------|---------------|------------------|-----------------|------------------|------------------------------|-----------------------|----------------|
| | | CLASS B, C, D | CLASS K, M, I | | | | | | |
| ITG-6 | 2 | 6-14 AWG | 6-14 AWG | 1.130 | 1.240 | 1.370 | 45 | 1/8 | 12 |
| ITOG-6 | 2 | 6-14 AWG | 6-14 AWG | 1.130 | 1.270 | 1.370 | 45 | 1/8 | 12 |
| IPLG6-3 | 3 | 6-14 AWG | 6-14 AWG | 1.550 | 1.240 | 1.370 | 45 | 1/8 | 12 |
| IPLG6-4 | 4 | 6-14 AWG | 6-14 AWG | 1.980 | 1.240 | 1.370 | 45 | 1/8 | 6 |
| IPLG6-6 | 6 | 6-14 AWG | 6-14 AWG | 2.820 | 1.240 | 1.370 | 45 | 1/8 | 6 |
| ITG-1 | 2 | 1-10 AWG | 2-10 AWG | 1.600 | 1.550 | 1.750 | 150 | 3/16 | 6 |
| ITOG-1 | 2 | 1-10 AWG | 2-10 AWG | 1.600 | 1.630 | 1.750 | 150 | 3/16 | 6 |
| IPLG1-3 | 3 | 1-10 AWG | 2-10 AWG | 1.550 | 1.240 | 1.370 | 150 | 3/16 | 6 |
| IPLG1-4 | 4 | 1-10 AWG | 2-10 AWG | 1.980 | 1.240 | 1.370 | 150 | 3/16 | 6 |
| IPLG1-6 | 6 | 1-10 AWG | 2-10 AWG | 2.820 | 1.240 | 1.370 | 150 | 3/16 | 6 |
| ITG-3/0 | 2 | 3/0-4 AWG | 2/0-2 AWG | 1.850 | 1.600 | 1.810 | 250 | 3/16 | 6 |
| ITOG-3/0 | 2 | 3/0-4 AWG | 2/0-2 AWG | 1.850 | 1.630 | 1.810 | 250 | 3/16 | 6 |
| IPLG3/0-3 | 3 | 3/0-4 AWG | 2/0-2 AWG | 2.250 | 1.600 | 1.750 | 250 | 3/16 | 6 |
| IPLG3/0-4 | 4 | 3/0-4 AWG | 2/0-2 AWG | 2.900 | 1.600 | 1.750 | 250 | 3/16 | 6 |
| IPLG3/0-6 | 6 | 3/0-4 AWG | 2/0-2 AWG | 4.200 | 1.600 | 1.750 | 250 | 3/16 | 4 |

| REPLACEMENT SLEEVES | |
|---------------------|----------------|
| CAT. NO. | STD. PKG. QTY. |
| SITG-6 | 10 |
| SITG-1 | 10 |
| SITG-3/0 | 10 |

POLARIS GREY™

Pre-Insulated, Multi-Port Connectors

For Fine Stranded Wire

ITG, ITOG, IPLG, SITG Series



SPECIFICATIONS

- UL Listed 486A Wire Connector (Dry location).
- **Temperature Rating/Voltage:** CU9.
Cold temperature rated to -45 °C, rated 600V, 90 °C.
- **Wire Type:** Can be used with Class B, C, D, K, M, I of copper conductor, but is specifically designed for use with fine-stranded, flexible and extra-flexible copper conductors. This includes DLO cable and motor lead wire – excellent for use in motor connect/disconnect applications.
- **Torque Chart:** See page 34.
- **Installation Instructions:** See page 35 for extra illustrations and detailed information for assembly, mounting and installation.

FEATURES

- **Safe:** Insulated with high dielectric strength plastisol for tough mechanical protection.
- Factory applied insulation provides consistent quality and protection.
- Abrasion and chemical resistant.
- **Fast:** Eliminates the need for cover and taping – supplied with removable access plugs over the hex screws to protect against contamination.
- **Easy:** Three sizes cover 14 to 3/0 AWG.
- **Reusable:** Ideal for cabletrays, troughs, wire-ways, raceways, ducts and motor junction boxes for fine stranded conductor applications .
- For copper wire only.
- For display bags with a mounting hole for hanging, add the suffix "-B" to the part number when ordering.

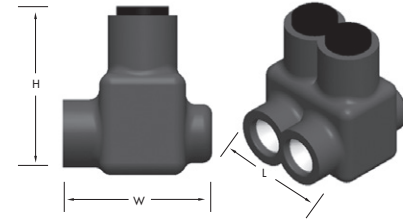


Figure varies by number of wire ports.



| CAT. NO. | NO. OF PORTS | WIRE RANGE (BY CLASSIFICATION) | | LENGTH (L) (IN.) | WIDTH (W) (IN.) | HEIGHT (H) (IN.) | MAX. TORQUE VALUE (IN./LBS.) | HEX/WRENCH SIZE (IN.) | STD. CTN. QTY. |
|-----------|--------------|--------------------------------|---------------|------------------|-----------------|------------------|------------------------------|-----------------------|----------------|
| | | CLASS B, C, D | CLASS K, M, I | | | | | | |
| ITG-6 | 2 | 6-14 AWG | 6-14 AWG | 1.130 | 1.240 | 1.370 | 45 | 1/8 | 12 |
| ITOG-6 | 2 | 6-14 AWG | 6-14 AWG | 1.130 | 1.270 | 1.370 | 45 | 1/8 | 12 |
| IPLG6-3 | 3 | 6-14 AWG | 6-14 AWG | 1.550 | 1.240 | 1.370 | 45 | 1/8 | 12 |
| IPLG6-4 | 4 | 6-14 AWG | 6-14 AWG | 1.980 | 1.240 | 1.370 | 45 | 1/8 | 6 |
| IPLG6-6 | 6 | 6-14 AWG | 6-14 AWG | 2.820 | 1.240 | 1.370 | 45 | 1/8 | 6 |
| ITG-1 | 2 | 1-10 AWG | 2-10 AWG | 1.600 | 1.550 | 1.750 | 150 | 3/16 | 6 |
| ITOG-1 | 2 | 1-10 AWG | 2-10 AWG | 1.600 | 1.630 | 1.750 | 150 | 3/16 | 6 |
| IPLG1-3 | 3 | 1-10 AWG | 2-10 AWG | 1.550 | 1.240 | 1.370 | 150 | 3/16 | 6 |
| IPLG1-4 | 4 | 1-10 AWG | 2-10 AWG | 1.980 | 1.240 | 1.370 | 150 | 3/16 | 6 |
| IPLG1-6 | 6 | 1-10 AWG | 2-10 AWG | 2.820 | 1.240 | 1.370 | 150 | 3/16 | 6 |
| ITG-3/0 | 2 | 3/0-4 AWG | 2/0-2 AWG | 1.850 | 1.600 | 1.810 | 250 | 3/16 | 6 |
| ITOG-3/0 | 2 | 3/0-4 AWG | 2/0-2 AWG | 1.850 | 1.630 | 1.810 | 250 | 3/16 | 6 |
| IPLG3/0-3 | 3 | 3/0-4 AWG | 2/0-2 AWG | 2.250 | 1.600 | 1.750 | 250 | 3/16 | 6 |
| IPLG3/0-4 | 4 | 3/0-4 AWG | 2/0-2 AWG | 2.900 | 1.600 | 1.750 | 250 | 3/16 | 6 |
| IPLG3/0-6 | 6 | 3/0-4 AWG | 2/0-2 AWG | 4.200 | 1.600 | 1.750 | 250 | 3/16 | 4 |

| REPLACEMENT SLEEVES | |
|---------------------|----------------|
| CAT. NO. | STD. PKG. QTY. |
| SITG-6 | 10 |
| SITG-1 | 10 |
| SITG-3/0 | 10 |