

# GUP Junction Boxes

Cl. I, Div. 1 and 2, Groups C, D  
 Cl. II, Div. 1, Groups E, F, G  
 Cl. II, Div. 2, Groups F, G  
 Cl. III

Explosionproof  
 Dust-Ignitionproof  
 Raintight

**1E**

## Applications:

GUP series junction boxes are used in threaded rigid conduit systems in hazardous areas:

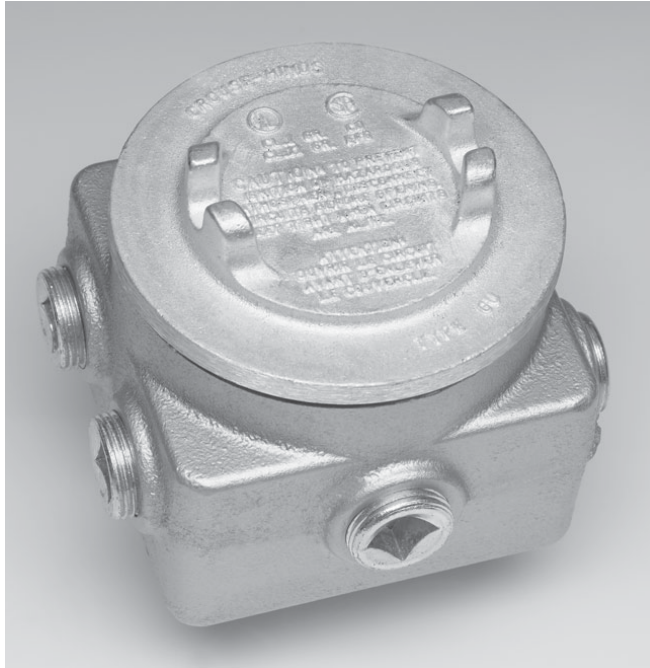
- To function as a junction or pull box
- Where space is limited such as in gasoline pumps
- Indoors or outdoors

## Features:

- Compact in design
- Supplied with a variety of hubs (6 hubs and 3 plugs or 10 hubs and 7 plugs)
- Cover sealed with standard "O" ring gasket for raintight enclosure

## Certifications and Compliances:

- NEC/CEC:
  - Class I, Division 1 and 2, Groups C, D
  - Class II, Division 1, Groups E, F, G
  - Class II, Division 2, Groups F, G
  - Class III
- UL Standard: 1203
- CSA Standard: C22.2 No. 30



## Standard Materials:

- Bodies – *Feraloy*® iron alloy
- Covers – copper-free aluminum

## Standard Finishes:

- *Feraloy* iron alloy – electrogalvanized and aluminum acrylic paint
- Copper-free aluminum – natural

## Options:

**Description**  
*Feraloy* iron alloy covers

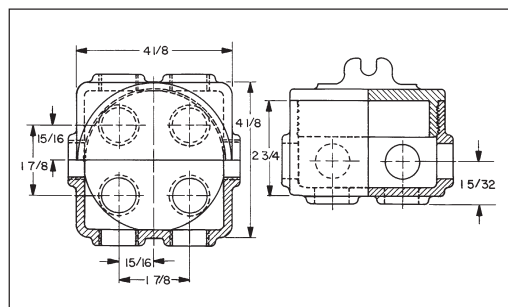
**Suffix**  
**WOD**

## Ordering Information:

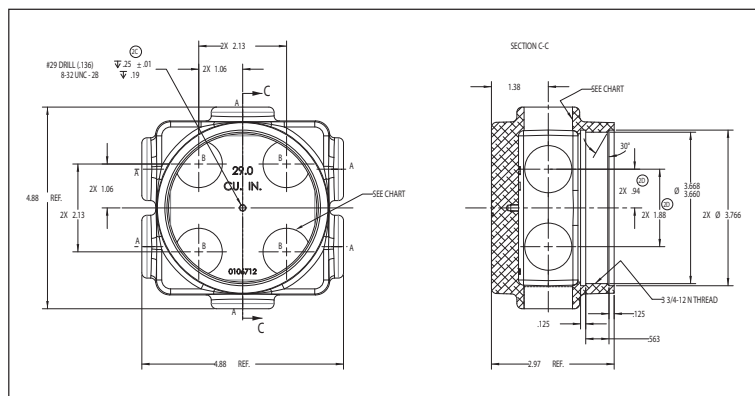
Top Hubs	Bottom Hubs	Side Hubs	Back Hubs	Cat. #
2-3/4"	2-3/4"	1-3/4"	None	<b>GUP215*</b>
2-3/4"	2-3/4"	1-3/4"	4-3/4"	<b>GUP214†</b>
2-3/4"	2-3/4"	1-3/4"	4-1"	<b>GUP314‡</b>
2-1"	2-1"	1-1"	4-1"	<b>GUP315‡‡</b>

\*Furnished with 3-3/4" pipe plugs.  
 †Furnished with 7-3/4" pipe plugs.  
 ‡Furnished with 4-3/4" pipe plugs and 3-1" pipe plugs.  
 ‡‡Furnished with 4-1" pipe plugs and 3-1" pipe plugs.

## Dimensions In Inches:



For conduit liner ordering information, see page 860.



**GUP315 Only**

