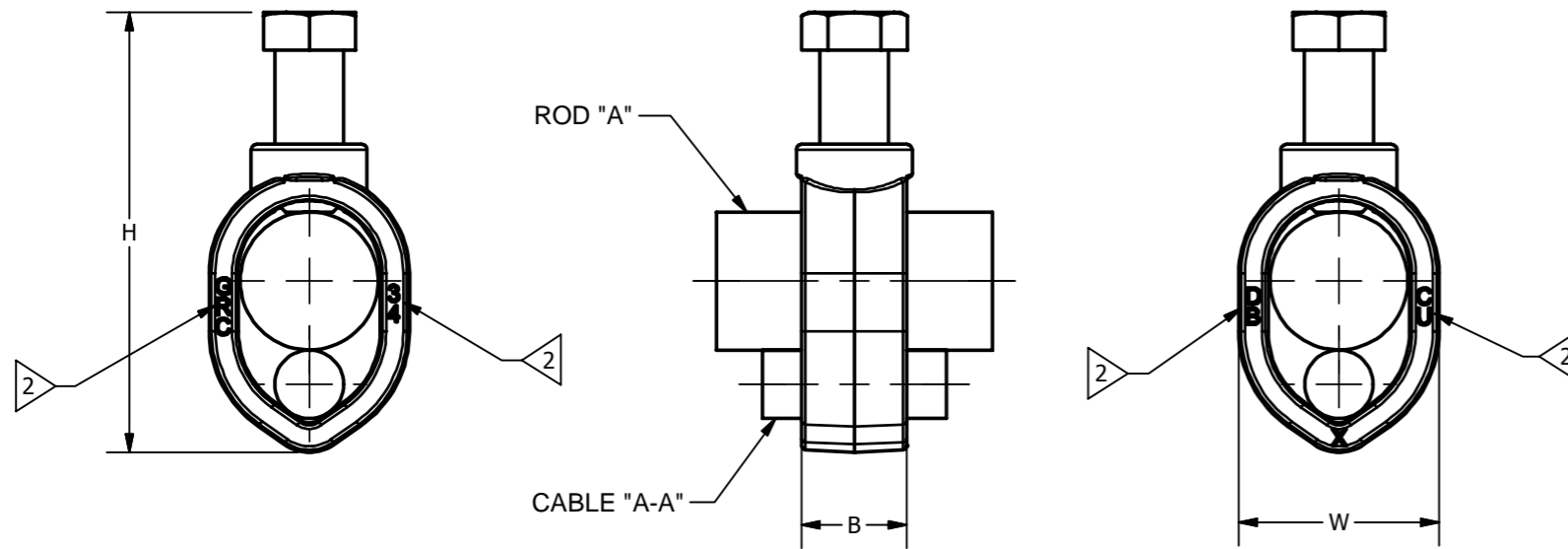
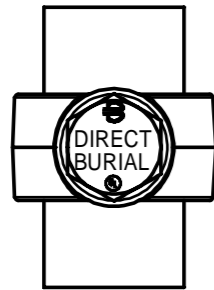


REV	DATE	DESCRIPTION	ECO	BY	CHK.
C	04/03/2014	UPDATED AS PER MARKUP	35398	GV	MB

CATALOG NUMBER	ACCOMMODATES - COPPER CONDUCTORS						B	H	W	RECOMMENDED TORQUE	
	ROD "A"			CABLE "A-A"						IN-LB	N-m
	NOMINAL O.D.	ACTUAL O.D.		AWG	METRIC WIRE SIZE						
GRC12	1/2	0.500	[13]	10 SOL (.102) - 2 STR (.292)	6mm <sup>2</sup> STR [3.21] - 35mm <sup>2</sup> STR [7.62]		.63 [16]	2.06 [52]	.89 [23]	240	27
GRC58	5/8	0.625	[16]	10 SOL (.102) - 1 STR (.332)	6mm <sup>2</sup> STR [3.21] - 35mm <sup>2</sup> STR [7.62]		.57 [14]	2.18 [55]	.95 [24]		
GRC34	3/4	0.75	[19]	8 SOL (.128) - 1/0 STR (.373)	10mm <sup>2</sup> SOL [3.58] - 50mm <sup>2</sup> STR [9.27]		.65 [17]	2.40 [61]	1.09 [28]		



**NOTES:**

1. MATERIAL: BODY CAST FROM HIGH STRENGTH COPPER ALLOY.
2. TYPICAL LETTERING.
3. UL467 LISTED, FILE E9999.
4. SUITABLE FOR DIRECT BURIAL IN EARTH OR CONCRETE.
5. REA ACCEPTED.
6. DIMENSIONS IN BRACKETS [ ] ARE IN MILLIMETERS ROUNDED OFF TO THE NEAREST MILLIMETER, UNLESS OTHERWISE SPECIFIED AND ARE FOR REFERENCE ONLY.

TO ORDER BURNDY PRODUCTS CALL		GROUND ROD CONNECTOR	
UNITED STATES 1-800-346-4175 (LONDONDERRY, NH)		ITEM NO: SEE TABLE	
CANADA: 1-800-361-6975 (QUEBEC) 1-800-387-6487 (ALL OTHER PROVINCES)		CAT. NO: GRC12, -58, -34	
FOR PRODUCT INFO: <a href="http://www.burndy.com">http://www.burndy.com</a>		DRAWN BY: A MONTMINY 3/8/2012	
		CHECKER: --	
		DSN APRVL: A MONTMINY 03/22/2014	
		MFG APRVL: --	
		QA APRVL: A PINEDA 04/01/2014	
		MKT APRVL: P THERRIEN 03/22/2014	
		PROD FAM: MECHANICAL GROUNDING	
		PROJECT #: --	
		DRAWING NO	
		SA..076868-01	
		REV	
		C	
		SHEET 1 OF 1	
		REL LEVEL: Released	
		SIZE B	