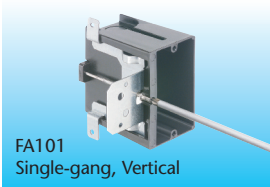
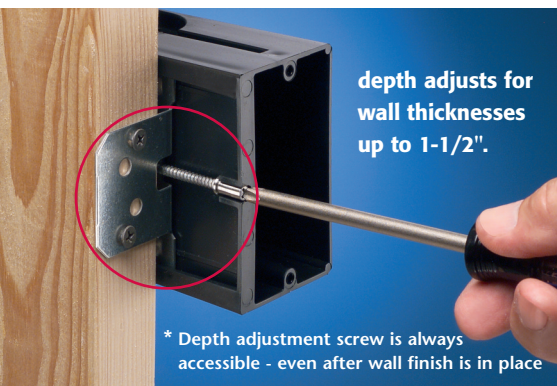
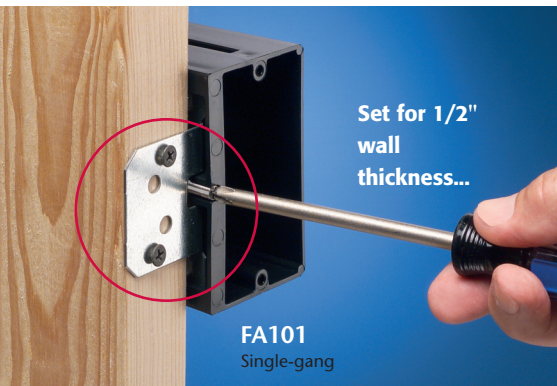


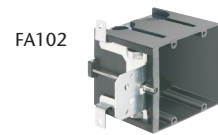
IN/OUT BOX™ Adjustable OUTLET Boxes

Made in USA 

Adjustable Non-Metallic Outlet Boxes for New Construction

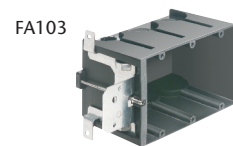


| Catalog Number | UPC/DEI/NAED Mfg. #018997 | Description | Number of Gangs / Cubic Inches | Unit/Std Pkg |
|----------------|---------------------------|--|--------------------------------|--------------|
| FA101* | 04241 | Non-metallic box | Single/Vertical/21.0 cu in | 25 |
| FA101H* | 11102 | for 2x4 studs w/ depth adjustment up to 1-1/2" (pre-set for 1/2" wall thickness) | Single/Horizontal/21.0 cu in | 25 |
| FA102* | 04242 | | Two-gang / 43.5 cu in | 10 |
| FA103* | 04243 | | Three-gang / 65.0 cu in | 10 |
| FA104 | 04244 | | Four-gang / 87.0 cu in | 10 |



with Ground Clip for use in Canada

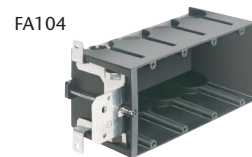
| Catalog Number | UPC/DEI/NAED Mfg. #018997 | Description | Number of Gangs / Cubic Inches | Unit/Std Pkg |
|------------------|---------------------------|--|--------------------------------|--------------|
| FA101GC* | 76881 | Non-metallic box | Single/Vertical/21.0 cu in | 25 |
| FA101HGC* | 11103 | w/ depth adjustment up to 1-1/2" (pre-set for 1/2" wall thickness) | Single/Horizontal/21.0 cu in | 25 |
| FA102GC* | 76883 | | Two-gang / 43.5 cu in | 10 |
| FA103GC* | 76884 | | Three-gang / 65.0 cu in | 10 |
| FA104GC | 76885 | | Four-gang / 87.0 cu in | 10 |



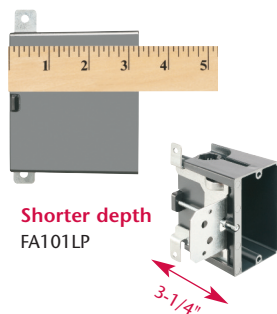
| Catalog Number | UPC/DEI/NAED Mfg. #018997 | Description | Unit/Std Pkg |
|----------------|---------------------------|---|--------------|
| FA102D | 04245 | Low Voltage Divider for FA102, FA103, FA104 | 25 |



Optional FA102D low voltage separator for use with multiple gang IN/OUT BOX



| Catalog Number | UPC/DEI/NAED Mfg. #018997 | Description IN/OUT BOX™ | Size/ Cu Inches | Unit/Std Pkg |
|------------------|---------------------------|--|------------------------|--------------|
| FA101LP | 76880 | 3.25" deep, Non-metallic low profile outlet box | Single-gang 18.3 cu in | 25 |
| FA101LPGC | 76882 | 3.25" deep, Non-metallic low profile outlet box, with ground clip for Canada | Single-gang 18.3 cu in | 25 |



w/ depth adjustment up to 1-1/2" (pre-set for 1/2" wall thickness)

Arlington's IN/OUT OUTLET BOXES are adjustable for wall thicknesses up to 1-1/2"; perfect for use when the final thickness is not known; double drywall, change orders, tile, etc.

New! ...single-gang **horizontal** box **FA101H** for countertops and horizontal outlets... single-gang, **low profile** **FA101LP**. Made for new work installations with shallower wall cavities, it's shorter than our 'regular' single-gang IN/OUT outlet box – perfect for smaller spaces.

- Complies with 2014 NEC, 314.20 for set back boxes
- Always accessible depth adjustment screw
- Secure installation on wood or steel studs in new construction



1 Stauffer Industrial Park
Scranton, PA 18517
800/233.4717
Fax 570/562.0646
www.aifittings.com

FA426 1214/15M
Patent pending