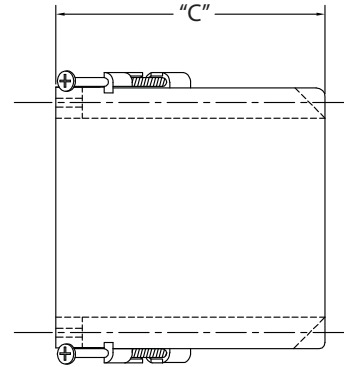
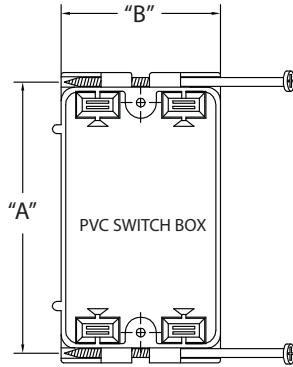


## EZ BOX® Single Gang Nail On Residential Box



Four knockouts

Enhanced angled nails for quick mounting between studs.

### 16 Cubic Inch

Part Number	Carton Quantity	"A"	"B"	"C"
EZ16SNW	100	3.813	2.250	2.500

Dimensions are nominal

### 20.3 Cubic Inch

Part Number	Carton Quantity	"A"	"B"	"C"
EZ20SNW	100	3.875	2.250	3.125

Dimensions are nominal

### 18 Cubic Inch

Part Number	Carton Quantity	"A"	"B"	"C"
EZ18SNW	100	3.875	2.250	2.875

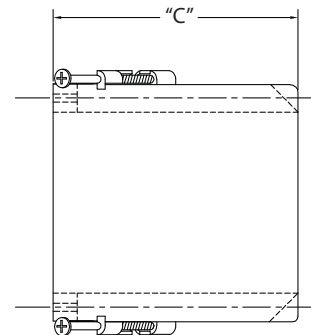
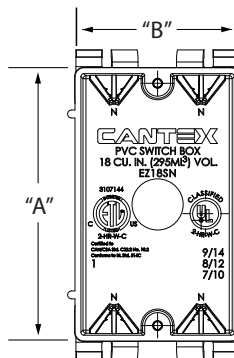
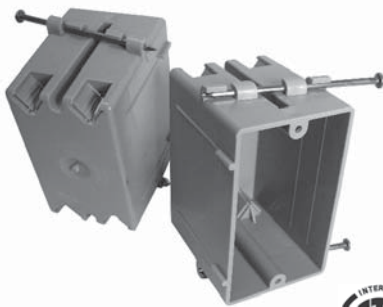
Dimensions are nominal

### 23 Cubic Inch

Part Number	Carton Quantity	"A"	"B"	"C"
EZ23SNW	100	3.875	2.259	3.500

Dimensions are nominal

## EZ BOX® Single Gang Nail On Residential Box



Four clamps

Enhanced angled nails for quick mounting between studs.

### 18 Cubic Inch

Part Number	Carton Quantity	"A"	"B"	"C"
EZ18SN	100	3.700	2.250	2.840
EZ18SNV	25	3.700	2.250	2.840

Dimensions are nominal

### 20.3 Cubic Inch

Part Number	Carton Quantity	"A"	"B"	"C"
EZ20SN	100	3.700	2.250	3.130
EZ20SNV	25	3.700	2.250	3.130

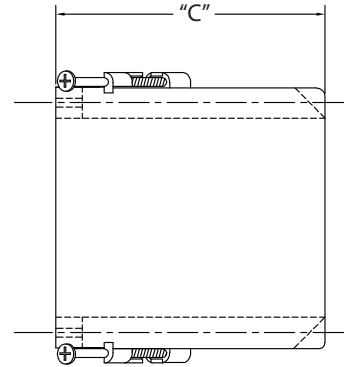
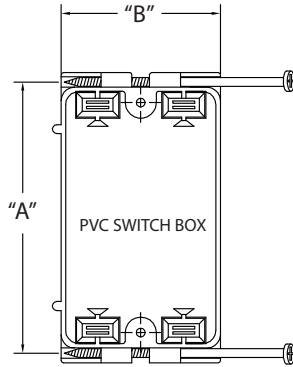
Dimensions are nominal

### 23 Cubic Inch

Part Number	Carton Quantity	"A"	"B"	"C"
EZ23SN	100	3.700	2.250	3.600
EZ23SNV	25	3.700	2.250	3.600

Dimensions are nominal

## EZ BOX® Single Gang Nail On Residential Box



Four knockouts

Enhanced angled nails for quick mounting between studs.

### 16 Cubic Inch

Part Number	Carton Quantity	"A"	"B"	"C"
EZ16SNW	100	3.813	2.250	2.500

Dimensions are nominal

### 20.3 Cubic Inch

Part Number	Carton Quantity	"A"	"B"	"C"
EZ20SNW	100	3.875	2.250	3.125

Dimensions are nominal

### 18 Cubic Inch

Part Number	Carton Quantity	"A"	"B"	"C"
EZ18SNW	100	3.875	2.250	2.875

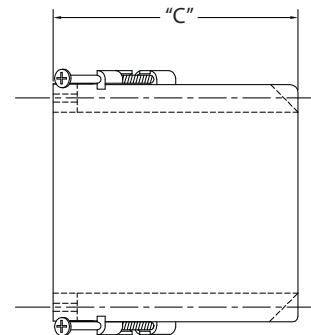
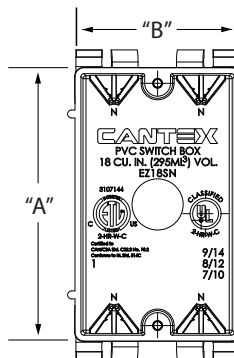
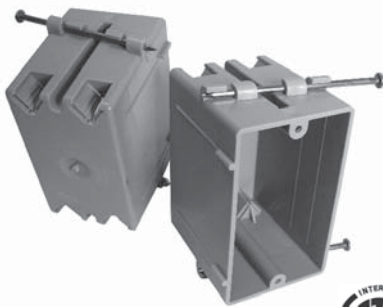
Dimensions are nominal

### 23 Cubic Inch

Part Number	Carton Quantity	"A"	"B"	"C"
EZ23SNW	100	3.875	2.259	3.500

Dimensions are nominal

## EZ BOX® Single Gang Nail On Residential Box



Four clamps

Enhanced angled nails for quick mounting between studs.

### 18 Cubic Inch

Part Number	Carton Quantity	"A"	"B"	"C"
EZ18SN	100	3.700	2.250	2.840
EZ18SNV	25	3.700	2.250	2.840

Dimensions are nominal

### 20.3 Cubic Inch

Part Number	Carton Quantity	"A"	"B"	"C"
EZ20SN	100	3.700	2.250	3.130
EZ20SNV	25	3.700	2.250	3.130

Dimensions are nominal

### 23 Cubic Inch

Part Number	Carton Quantity	"A"	"B"	"C"
EZ23SN	100	3.700	2.250	3.600
EZ23SNV	25	3.700	2.250	3.600

Dimensions are nominal