

LENGTH  
 EU-12 = 12-1/4"  
 EU-21 = 21-1/4"  
 EU-24 = 24-1/2"  
 EU-33 = 33-1/2"  
 EU-42 = 42-1/2"



**APPLICATION:**

Suitable for retail display, gondolas, cove and undercabinet applications.

**PRODUCT FEATURES:**

- Easy-fit cover channel attachment
- Tool-less wire-way access
- Detachable channel cover gives tool-less wiring and quick installation
- Romex/BX conduit connector included with every fixture
- Softening lens, linear prismatic diffuser gives better visual comfort
- Available with factory-installed lamp, rocker switch, cordset and outlet options
- Knockouts available at the back, side and rear for easy installation
- Available keyhole mounting slots on the back
- Lamp supplied is 41K (4100 kelvin)

**SPECIFICATIONS:**

**BALLAST**

Normal power factor electronic type ballast standard.

**ELECTRICAL**

Fixture conforms to UL 1598 and is suitable for damp location.

**FINISH**

U.V. coated rust resistance. Painted parts finished with polyester powder coating. 22-gauge die-formed steel housing.

**LISTING**

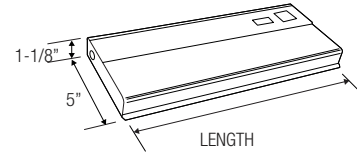
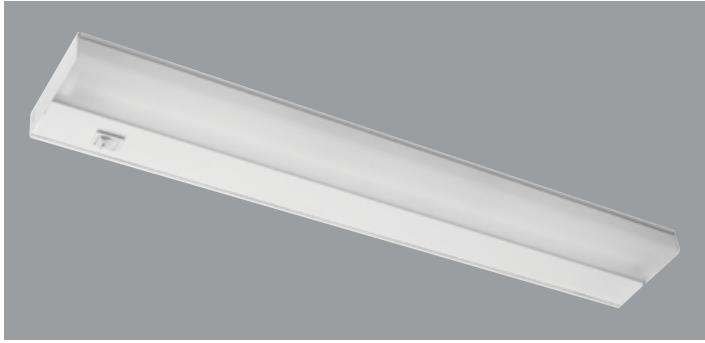
UL/C-UL listed to US and Canadian standard

**WARRANTY**

Guaranteed for one year against mechanical defects

**Ordering Information > Example: EU-12-120**

<b>EU</b>			
<b>SERIES</b>	<b>FIXTURE SIZE/LAMP TYPE (Included)</b>	<b>VOLTAGE</b>	<b>ACCESSORIES</b>
EU	<p style="text-align: center;"><b>12" FIXTURE</b></p> <p>12 - (1 lamp/8W/T5)-(12-1/4"L X 1-1/8"H X 5"W)</p> <hr/> <p style="text-align: center;"><b>21" FIXTURE</b></p> <p>21 - (1 lamp/13W/T5)-(21-1/4"L X 1-1/8"H X 5"W)</p> <hr/> <p style="text-align: center;"><b>24" FIXTURE</b></p> <p>24 - (2 lamps/8W/T5)-(24-1/2"L X 1-1/8"H X 5"W)</p> <hr/> <p style="text-align: center;"><b>33" FIXTURE</b></p> <p>33 - (1 lamp/8W/T5) &amp; (1 lamp/13W/T5)-(33-1/2"L X 1-1/8"H X 5"W)</p> <hr/> <p style="text-align: center;"><b>42" FIXTURE</b></p> <p>42 - (2 lamps/13W/T5)-(42-1/2"L X 1-1/8"H X 5"W)</p>	<p>120 - (Standard)</p> <p>277 - (Optional)</p>	<p><b>SW</b> - Rocker switch (120V only)</p> <p><b>RC</b> - Grounded outlet (120V only)</p> <p><b>CS</b> - 6', 3-wire grounded cordset</p>



LENGTH  
 EU-12 = 12-1/4"  
 EU-21 = 21-1/4"  
 EU-24 = 24-1/2"  
 EU-33 = 33-1/2"  
 EU-42 = 42-1/2"



**APPLICATION:**

Suitable for retail display, gondolas, cove and undercabinet applications.

**PRODUCT FEATURES:**

- Easy-fit cover channel attachment
- Tool-less wire-way access
- Detachable channel cover gives tool-less wiring and quick installation
- Romex/BX conduit connector included with every fixture
- Softening lens, linear prismatic diffuser gives better visual comfort
- Available with factory-installed lamp, rocker switch, cordset and outlet options
- Knockouts available at the back, side and rear for easy installation
- Available keyhole mounting slots on the back
- Lamp supplied is 41K (4100 kelvin)

**SPECIFICATIONS:**

**BALLAST**

Normal power factor electronic type ballast standard.

**ELECTRICAL**

Fixture conforms to UL 1598 and is suitable for damp location.

**FINISH**

U.V. coated rust resistance. Painted parts finished with polyester powder coating. 22-gauge die-formed steel housing.

**LISTING**

UL/C-UL listed to US and Canadian standard

**WARRANTY**

Guaranteed for one year against mechanical defects

**Ordering Information > Example: EU-12-120**

<b>EU</b>			
<b>SERIES</b>	<b>FIXTURE SIZE/LAMP TYPE (Included)</b>	<b>VOLTAGE</b>	<b>ACCESSORIES</b>
EU	<p style="text-align: center;"><b>12" FIXTURE</b></p> <p>12 - (1 lamp/8W/T5)-(12-1/4"L X 1-1/8"H X 5"W)</p> <hr/> <p style="text-align: center;"><b>21" FIXTURE</b></p> <p>21 - (1 lamp/13W/T5)-(21-1/4"L X 1-1/8"H X 5"W)</p> <hr/> <p style="text-align: center;"><b>24" FIXTURE</b></p> <p>24 - (2 lamps/8W/T5)-(24-1/2"L X 1-1/8"H X 5"W)</p> <hr/> <p style="text-align: center;"><b>33" FIXTURE</b></p> <p>33 - (1 lamp/8W/T5) &amp; (1 lamp/13W/T5)-(33-1/2"L X 1-1/8"H X 5"W)</p> <hr/> <p style="text-align: center;"><b>42" FIXTURE</b></p> <p>42 - (2 lamps/13W/T5)-(42-1/2"L X 1-1/8"H X 5"W)</p>	<p>120 - (Standard)</p> <p>277 - (Optional)</p>	<p><b>SW</b> - Rocker switch (120V only)</p> <p><b>RC</b> - Grounded outlet (120V only)</p> <p><b>CS</b> - 6', 3-wire grounded cordset</p>