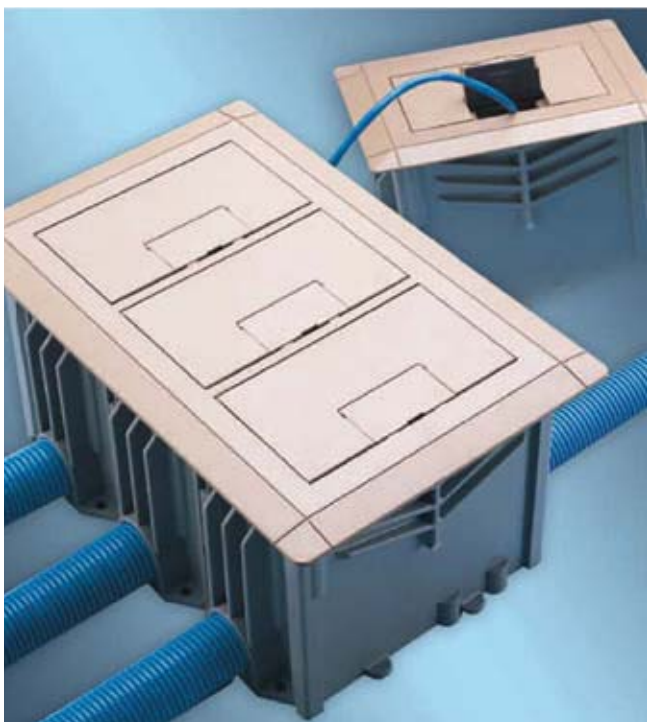


Rectangular Floor Boxes

1-, 2- and 3-Gang

Features

- Covers require no adjusting collar. Two screws assure a flush, secure installation.
- Nonmetallic PVC construction, watertight gasket and corrosion-resistant hardware assure long life and reliable performance even in harsh and/or corrosive environments
- One consistent box depth simplifies ordering time and reduces inventory
- Saves time and money on installations with simple saw cut to floor level
- Concrete tight and suitable for any on grade/below grade application; concrete or wood sub-floor construction approved
- Convenient cubic inch capacity markings on inside allow for easy inspection
- PVC molded hubs and reducer plugs included
- Accepts 1/2 in., 3/4 in. and 1 in. conduit tubing or raceway
- Rectangular sides are drillable
- For tile and carpet applications
- Cover options include solid brass, stainless steel and nonmetallic (brown, slate and caramel)
- UL scrub water tested, approved for all types of finished flooring



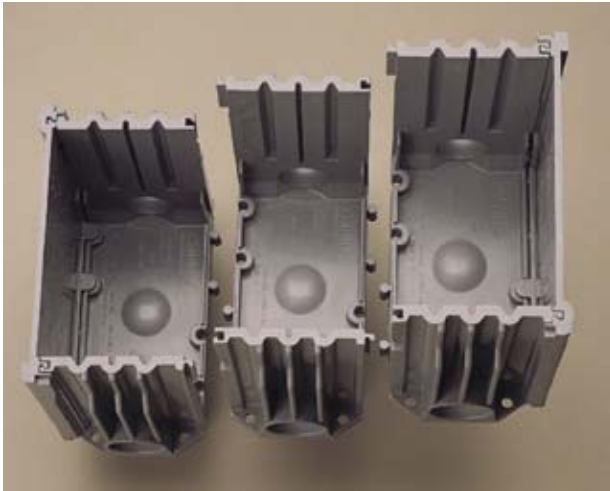
Carlton® Rectangular Floor Box Systems – two-way, data and communications plus easy double or triple ganging, too.

Two-in-one data and communications capability cuts installation time and cost even more, while simple two- and three-gang modularity gives you the flexibility, installation ease and cost-savings no other nonmetallic boxes can.

The covers attach without the use of fasteners, providing a professional, clean installation as well as preserving the aesthetic look of the product. Take a close look at what our rectangular floor box systems can offer you.

Rectangular Floor Boxes

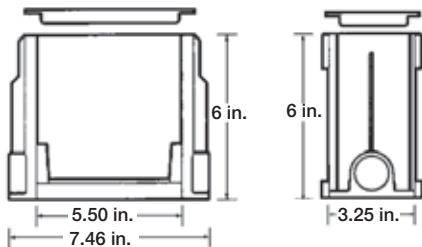
Installation



With our rectangular boxes, one SKU is all you ever need. Simply remove appropriate sides and slide boxes together to create two- or three-gang boxes for on-the-job flexibility no competitor offers.

Specifications

Rectangular Floor Box



Cat. No.	Material	Number of gangs	Internal Volume (cu. in.)	Min. Concrete Depth (in.)	Hubs	Reducer Plugs	Std. Ctn. Qty.	Std. Ctn. Wt. lb.
E976RFB	PVC	1	97.4 (16.8 per inch of depth)	3-1/2	(2) 1 in.	(2) 1 in. x 3/4 in. (2) 3/4 in. x 1/2 in.	3	6.92

Activation Kit



Activation kit provides components to accommodate all data and communications devices plus a divider.



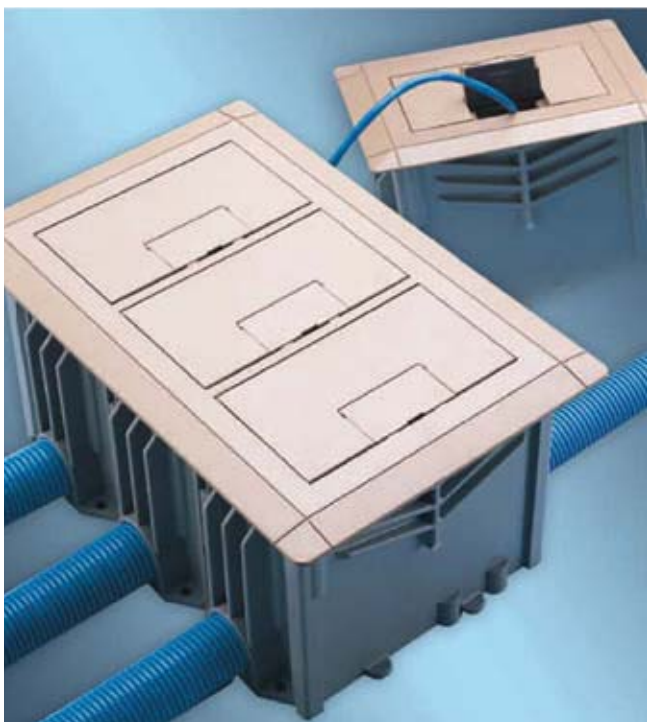
Cat. No.	Material	Std. Ctn. Qty.	Std. Ctn. Wt. lb.
E976AK2	PVC	3	2.47

Rectangular Floor Boxes

1-, 2- and 3-Gang

Features

- Covers require no adjusting collar. Two screws assure a flush, secure installation.
- Nonmetallic PVC construction, watertight gasket and corrosion-resistant hardware assure long life and reliable performance even in harsh and/or corrosive environments
- One consistent box depth simplifies ordering time and reduces inventory
- Saves time and money on installations with simple saw cut to floor level
- Concrete tight and suitable for any on grade/below grade application; concrete or wood sub-floor construction approved
- Convenient cubic inch capacity markings on inside allow for easy inspection
- PVC molded hubs and reducer plugs included
- Accepts 1/2 in., 3/4 in. and 1 in. conduit tubing or raceway
- Rectangular sides are drillable
- For tile and carpet applications
- Cover options include solid brass, stainless steel and nonmetallic (brown, slate and caramel)
- UL scrub water tested, approved for all types of finished flooring



Carlton® Rectangular Floor Box Systems – two-way, data and communications plus easy double or triple ganging, too.

Two-in-one data and communications capability cuts installation time and cost even more, while simple two- and three-gang modularity gives you the flexibility, installation ease and cost-savings no other nonmetallic boxes can.

The covers attach without the use of fasteners, providing a professional, clean installation as well as preserving the aesthetic look of the product. Take a close look at what our rectangular floor box systems can offer you.

Rectangular Floor Boxes

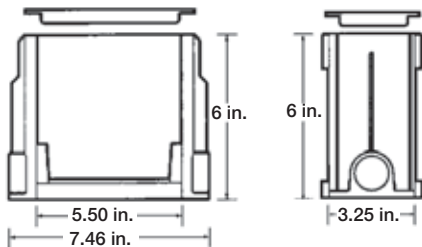
Installation



With our rectangular boxes, one SKU is all you ever need. Simply remove appropriate sides and slide boxes together to create two- or three-gang boxes for on-the-job flexibility no competitor offers.

Specifications

Rectangular Floor Box



Cat. No.	Material	Number of gangs	Internal Volume (cu. in.)	Min. Concrete Depth (in.)	Hubs	Reducer Plugs	Std. Ctn. Qty.	Std. Ctn. Wt. lb.
E976RFB	PVC	1	97.4 (16.8 per inch of depth)	3-1/2	(2) 1 in.	(2) 1 in. x 3/4 in. (2) 3/4 in. x 1/2 in.	3	6.92

Activation Kit



Activation kit provides components to accommodate all data and communications devices plus a divider.



Cat. No.	Material	Std. Ctn. Qty.	Std. Ctn. Wt. lb.
E976AK2	PVC	3	2.47