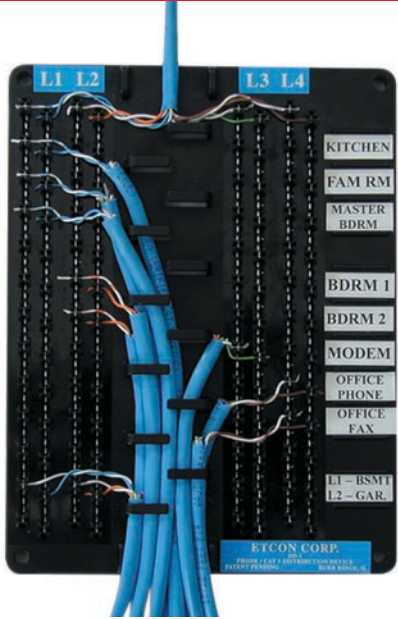


# VOICE - DATA - VIDEO



## DD1 PHONE DISTRIBUTION DEVICE FOR RESIDENTIAL AND SOHO PHONE INSTALLATIONS.

- Accommodates up to 4 lines.
- 12 outlets/stations per line.
- No bridging clips required.
- For use with Cat. 5E/5/3 phone wire.
- For use with 110 punch or push down tool.

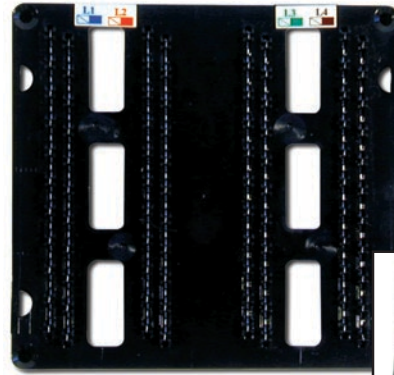
**DD1K** DD1 WITH THE DD110T PUSH DOWN TOOL.

**1C** COVER FOR DD1 PHONE DISTRIBUTION DEVICE.

**DD1C** DD1 AND COVER COMBO.

**DD1CK** DD1, COVER, AND THE DD110T PUSH DOWN TOOL.

**DD1-FD** 10 DD1 IN FLOOR DISPLAY



## DD3 PHONE DISTRIBUTION DEVICE FOR RESIDENTIAL AND SOHO PHONE INSTALLATIONS.

- Accommodates up to 4 lines.
- 10 outlets/stations per line.
- No bridging clips required.
- Designed to be wired from the back for clean, organized appearance.
- For use with 110 punch or push down tool.

**DD3K** DD3 WITH THE DD110T PUSH DOWN TOOL.

**3C** COVER FOR DD3 PHONE DISTRIBUTION DEVICE.

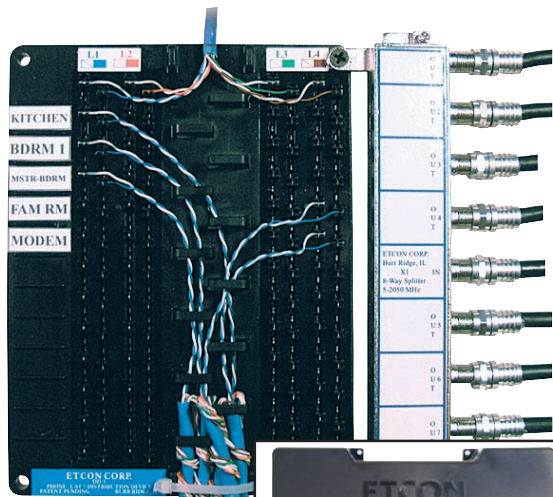
**DD3C** DD3 AND COVER COMBO.

**DD3CK** DD3, COVER, AND THE DD110T PUSH DOWN TOOL

**DD3CX** DD3, COVER, AND 4 WAY VIDEO SPLITTER.

**DD3CXNS** DD3, 4-WAY VIDEO SPLITTER, DATA NETWORK, SECURITY AND COVER COMBO.

**DD3-FD** 10 DD3 IN FLOOR DISPLAY



## DD1X1 PHONE DISTRIBUTION DEVICE WITH 8-WAY 2050 MHZ (2GHZ) SPLITTER FOR RESIDENTIAL AND SOHO PHONE AND VIDEO INSTALLATIONS.

- Accommodates up to 4 lines.
- Allows for up to 48 stations or phone home runs.
- For use with 110 punch or push down tool.
- Internally bridged and NO bridging clips needed.
- 8-way 2050 MHz (2GHz) splitter for CATV cable runs.

**DD1X1C** DD1X1 WITH COVER

**DD1X1K** DD1X1 WITH THE 110 PUSH DOWN TOOL.

**DD1X1CK** DD1X1 WITH COVER and PUSH DOWN TOOL.

**DD1X1-N8** DD1X1 WITH 8 POSITION NETWORK CARD.

**X1C** COVER FOR DD1X1 PHONE DISTRIBUTION DEVICE.

**DD1X1-FD** 10 DD1X1 IN FLOOR DISPLAY

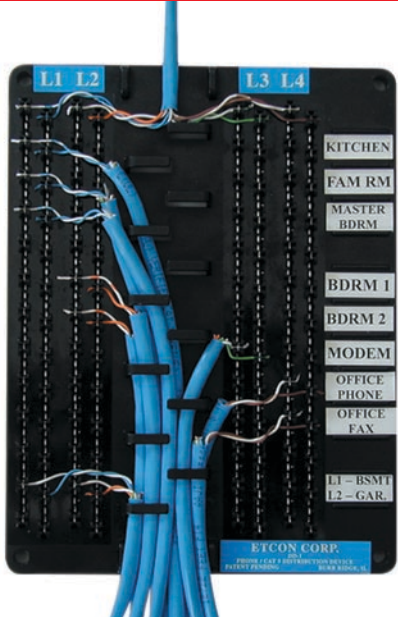
**DD1X1C-FD** 10 DD1X1C IN FLOOR DISPLAY



**FREE Floor Display**  
See back cover for details



# VOICE - DATA - VIDEO



## DD1 PHONE DISTRIBUTION DEVICE FOR RESIDENTIAL AND SOHO PHONE INSTALLATIONS.

- Accommodates up to 4 lines.
- 12 outlets/stations per line.
- No bridging clips required.
- For use with Cat. 5E/5/3 phone wire.
- For use with 110 punch or push down tool.

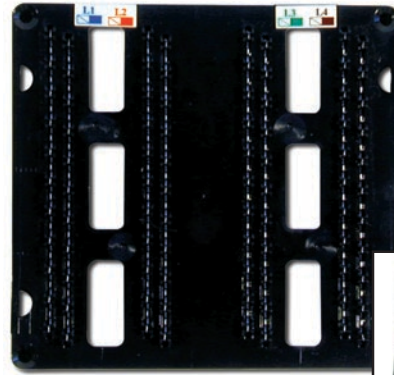
**DD1K** DD1 WITH THE DD110T PUSH DOWN TOOL.

**1C** COVER FOR DD1 PHONE DISTRIBUTION DEVICE.

**DD1C** DD1 AND COVER COMBO.

**DD1CK** DD1, COVER, AND THE DD110T PUSH DOWN TOOL.

**DD1-FD** 10 DD1 IN FLOOR DISPLAY



## DD3 PHONE DISTRIBUTION DEVICE FOR RESIDENTIAL AND SOHO PHONE INSTALLATIONS.

- Accommodates up to 4 lines.
- 10 outlets/stations per line.
- No bridging clips required.
- Designed to be wired from the back for clean, organized appearance.
- For use with 110 punch or push down tool.

**DD3K** DD3 WITH THE DD110T PUSH DOWN TOOL.

**3C** COVER FOR DD3 PHONE DISTRIBUTION DEVICE.

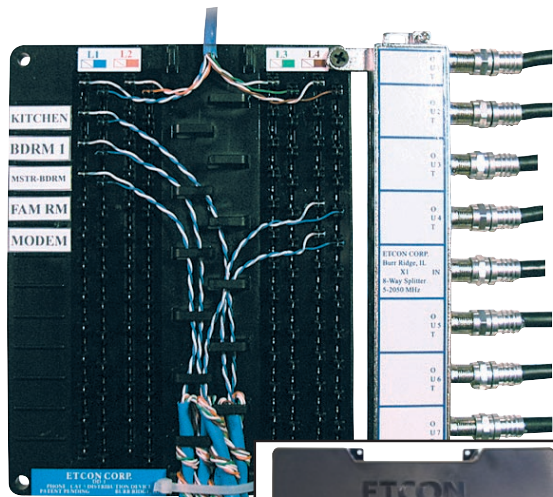
**DD3C** DD3 AND COVER COMBO.

**DD3CK** DD3, COVER, AND THE DD110T PUSH DOWN TOOL

**DD3CX** DD3, COVER, AND 4 WAY VIDEO SPLITTER.

**DD3CXNS** DD3, 4-WAY VIDEO SPLITTER, DATA NETWORK, SECURITY AND COVER COMBO.

**DD3-FD** 10 DD3 IN FLOOR DISPLAY



## DD1X1 PHONE DISTRIBUTION DEVICE WITH 8-WAY 2050 MHZ (2GHZ) SPLITTER FOR RESIDENTIAL AND SOHO PHONE AND VIDEO INSTALLATIONS.

- Accommodates up to 4 lines.
- Allows for up to 48 stations or phone home runs.
- For use with 110 punch or push down tool.
- Internally bridged and NO bridging clips needed.
- 8-way 2050 MHz (2GHz) splitter for CATV cable runs.

**DD1X1C** DD1X1 WITH COVER

**DD1X1K** DD1X1 WITH THE 110 PUSH DOWN TOOL.

**DD1X1CK** DD1X1 WITH COVER and PUSH DOWN TOOL.

**DD1X1-N8** DD1X1 WITH 8 POSITION NETWORK CARD.

**X1C** COVER FOR DD1X1 PHONE DISTRIBUTION DEVICE.

**DD1X1-FD** 10 DD1X1 IN FLOOR DISPLAY

**DD1X1C-FD** 10 DD1X1C IN FLOOR DISPLAY



**FREE Floor Display**  
See back cover for details

