



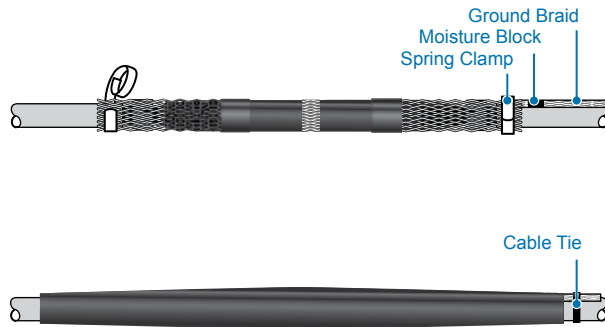
C_CSJA

CSJA

In-line Cold Shrinkable Joints for all 1/C Shielded Power Cables (15-35 kV)

TE Connectivity's Raychem introduces the "All-in-One" CSJA cold shrinkable joint for 15 kV through 35 kV. It is designed to splice tape shield, wire shield, LC shield, UniShield, JCN and flat strap shielded cables.

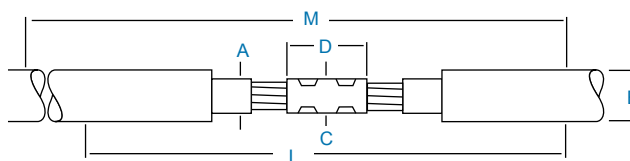
- This cable joint has a pre-expanded EPDM re-jacketing sleeve and an integrated neutral sock. The "All-in-One" design is easy to install with minimal steps and short installation time.
- A pre-expanded, single-piece silicone rubber joint body with high mechanical expansion capability allows a wide application range.
- An ergonomically designed spiral holdout provides a smooth installation with low release forces.
- Total length of the splice body on the holdout is 14 to 19 inches providing a compact design.
- The silicone rubber body provides high dielectric strength, high tear strength, low tension set, and excellent low temperature recovery.
- Integrated electrical stress control enhanced by factory molded stress cones and a Faraday cage.
- Void filling stress relief mastics are not necessary.
- Proven shield continuity concept which can also bridge concentric neutrals.
- The joint accepts both mechanical and compression connectors.
- When a ShearBolt connector is used, this is a totally crimpless system.
- Meets IEEE-404 requirements for 15 kV through 35 kV.
- Each silicone splice body is factory tested to include AC withstand and partial discharge in accordance with IEEE-404 production tests.



Ordering Information

1. Selections are based on the typical dimensions of 100% insulated cables, manufactured in accordance with AEIC standard. Nominal insulation thickness (100%): 15 kV: 175 mils, 25 kV:260 mils, 35 kV:345 mils.
2. Select the appropriate catalog number. Use the insulation OD, and jacket OD range as the final ordering criteria.
3. For mechanical ShearBolt connector included in the kit confirm the correct connector selection according to the Min/Max diameter over the cable conductor from the tables.
4. If external grounding is required, order the CSJ-EG kit.
5. For other applications or if you have any questions, contact your TE Connectivity representative.
6. Standard package: 1 kit per box.
7. Related test reports: EDR-5430, EDR-5455, EDR-5513
8. For AL Mechanical ShearBolt connector information request data sheet 9-1773440-4 and for CU request 165972.

Selection Information: Dimensions in Inches (millimeters)



| Catalog Number | Voltage Class | Nominal Cable Range | Insulation O.D. (Min.-Max.) | | OD (Max.) | Jacket Sock (AWG) | Neutral Min./Max Diameter Over Cable Conductor* | | Kit Installed Length L | Required Installation Space M |
|----------------|---------------|---------------------|-----------------------------|---|-----------|-------------------|---|---|------------------------|-------------------------------|
| | | | A | B | | | C | D | | |

CSJA Joint without Connector

| | | | | | | | | | |
|-----------|-------|----------|------------------------|-------------|-----|-------------|--------------|----------|-----------|
| CSJA-1521 | 15 kV | #2-350 | 0.69-1.20 (17.5-30.5) | 1.50 (38.1) | 1/0 | 1.30 (33.0) | 5.50 (140.0) | 29 (737) | 39 (990) |
| CSJA-1522 | 15 kV | 4/0-750 | 0.87-1.40 (22.1-35.6) | 1.80 (46.0) | 1/0 | 1.50 (38.0) | 5.50 (140.0) | 29 (737) | 39 (990) |
| CSJA-1523 | 15 kV | 350-1000 | 1.03-1.58 (26.2-40.0) | 2.05 (52.1) | 2/0 | 1.65 (42.0) | 6.69 (170.0) | 33 (838) | 43 (1090) |
| CSJA-1524 | 15 kV | 750-1250 | 1.28-2.05 (32.50-52.0) | 2.60 (66.0) | 2/0 | 1.85 (47.0) | 7.90 (200.0) | 37 (939) | 49 (1244) |
| CSJA-2822 | 28 kV | #1-500 | 0.87-1.40 (22.1-35.6) | 1.80 (46.0) | 1/0 | 1.50 (38.0) | 5.50 (140.0) | 29 (737) | 39 (990) |
| CSJA-2823 | 28 kV | 4/0-750 | 1.03-1.58 (26.20-40.0) | 2.05 (52.1) | 2/0 | 1.65 (42.0) | 6.69 (170.0) | 33 (838) | 43 (1090) |
| CSJA-2824 | 28 kV | 500-1250 | 1.28-2.05 (32.50-52.0) | 2.60 (66.0) | 2/0 | 1.85 (47.0) | 7.90 (200.0) | 37 (939) | 49 (1244) |
| CSJA-3523 | 35 kV | 1/0-350 | 1.03-1.49 (26.20-37.8) | 2.05 (52.1) | 2/0 | 1.40 (35.6) | 5.50 (140.0) | 33 (838) | 43 (1090) |
| CSJA-3524 | 35 kV | 350-1000 | 1.36-2.05 (34.54-52.0) | 2.60 (66.0) | 2/0 | 1.96 (50.0) | 7.90 (200.0) | 37 (939) | 49 (1244) |
| CSJA-3525 | 35 kV | 750-1250 | 1.63-2.36 (41.40-60.0) | 2.60 (66.0) | 2/0 | 2.36 (60.0) | 7.90 (200.0) | 37 (939) | 49 (1244) |

CSJA Joint With Copper Mechanical Shear Bolt Connector

| | | | | | | | | | |
|-------------|-------|---------|------------------------|-------------|-----|-------------------------|--|----------|-----------|
| CSJA-1521M1 | 15 kV | 2/0-350 | 0.69-1.20 (17.5-30.5) | 1.50 (38.1) | 1/0 | 0.376-0.736 (9.50-18.7) | | 29 (737) | 39 (990) |
| CSJA-1522M1 | 15 kV | 4/0-500 | 0.87-1.40 (22.1-35.6) | 1.80 (46.0) | 1/0 | 0.376-0.736 (9.50-18.7) | | 29 (737) | 39 (990) |
| CSJA-1522M2 | 15 kV | 350-750 | 0.87-1.40 (22.1-35.6) | 1.80 (46.0) | 1/0 | 0.570-0.945 (14.5-24.0) | | 29 (737) | 39 (990) |
| CSJA-1523M2 | 15 kV | 350-750 | 1.03-1.58 (26.2-40.0) | 2.05 (52.1) | 2/0 | 0.570-0.945 (14.5-24.0) | | 33 (838) | 43 (1090) |
| CSJA-2822M1 | 28 kV | 2/0-500 | 0.87-1.40 (22.1-35.6) | 1.80 (46.0) | 1/0 | 0.376-0.736 (9.50-18.7) | | 29 (737) | 39 (990) |
| CSJA-2823M2 | 28 kV | 350-750 | 1.03-1.58 (26.2-40.0) | 2.05 (52.1) | 2/0 | 0.570-0.945 (14.5-24.0) | | 33 (838) | 43 (1090) |
| CSJA-2824M2 | 28 kV | 500-750 | 1.28-2.05 (32.50-52.0) | 2.60 (66.0) | 2/0 | 0.570-0.945 (14.5-24.0) | | 37 (939) | 49 (1244) |
| CSJA-3523M1 | 35 kV | 2/0-350 | 1.03-1.49 (26.20-37.8) | 2.05 (52.1) | 2/0 | 0.376-0.736 (9.50-18.7) | | 33 (838) | 43 (1090) |
| CSJA-3524M2 | 35 kV | 350-750 | 1.36-2.05 (34.54-52.0) | 2.60 (66.0) | 2/0 | 0.570-0.945 (14.5-24.0) | | 37 (939) | 49 (1244) |

* Min./max. diameter over cable conductor accepted by the copper mechanical connector.

CSJA Joint with Aluminum Mechanical Shear Bolt Connector

| | | | | | | | | | |
|--------------|-------|-----------|------------------------|-------------|-----|--------------------------|--|----------|-----------|
| CSJA-1521M4 | 15 kV | #2-3/0 | 0.69-1.20 (17.5-30.5) | 1.50 (38.1) | 1/0 | 0.268-0.470 (6.80-11.9) | | 29 (737) | 39 (990) |
| CSJA-1521M5 | 15 kV | #2-350 | 0.69-1.20 (17.5-30.5) | 1.50 (38.1) | 1/0 | 0.268-0.681 (6.80-17.3) | | 29 (737) | 39 (990) |
| CSJA-1522M6 | 15 kV | 4/0-500 | 0.87-1.40 (22.1-35.6) | 1.80 (46.0) | 1/0 | 0.423-0.813 (10.7-20.6) | | 29 (737) | 39 (990) |
| CSJA-1522M7 | 15 kV | 500-750 | 0.87-1.40 (22.1-35.6) | 1.80 (46.0) | 1/0 | 0.736-0.998 (18.7-25.3) | | 29 (737) | 39 (990) |
| CSJA-1523M8 | 15 kV | 350-750 | 1.03-1.58 (26.20-40.0) | 2.05 (52.1) | 2/0 | 0.616-0.998 (15.7-25.3) | | 33 (838) | 43 (1090) |
| CSJA-1524M9 | 15 kV | 750-1000 | 1.28-2.05 (32.50-52.0) | 2.60 (66.0) | 2/0 | 0.813-1.152 (20.6-29.2) | | 37 (939) | 49 (1244) |
| CSJA-2822M5 | 28 kV | #1-350 | 0.87-1.40 (22.1-35.6) | 1.80 (46.0) | 1/0 | 0.268-0.681 (6.80-17.3) | | 29 (737) | 39 (990) |
| CSJA-2822M6 | 28 kV | 4/0-500 | 0.87-1.40 (22.1-35.6) | 1.80 (46.0) | 1/0 | 0.423-0.813 (10.7-20.6) | | 29 (737) | 39 (990) |
| CSJA-2823M8 | 28 kV | 350-750 | 1.03-1.58 (26.20-40.0) | 2.05 (52.1) | 2/0 | 0.616-0.998 (15.7-25.3) | | 33 (838) | 43 (1090) |
| CSJA-2824M8 | 28 kV | 500-750 | 1.28-2.05 (32.50-52.0) | 2.60 (66.0) | 2/0 | 0.616-0.998 (15.7-25.3) | | 37 (939) | 49 (1244) |
| CSJA-2824M9 | 28 kV | 750-1000 | 1.28-2.05 (32.50-52.0) | 2.60 (66.0) | 2/0 | 0.813-1.152 (20.60-29.2) | | 37 (939) | 49 (1244) |
| CSJA-3523M5 | 35 kV | 1/0-350 | 1.03-1.49 (26.20-37.8) | 2.05 (52.1) | 2/0 | 0.268-0.681 (6.8-17.3) | | 33 (838) | 43 (1090) |
| CSJA-3524M8 | 35 kV | 350-750 | 1.36-2.05 (34.54-52.0) | 2.60 (66.0) | 2/0 | 0.616-0.998 (15.7-25.3) | | 37 (939) | 49 (1244) |
| CSJA-3524M9 | 35 kV | 750-1000 | 1.36-2.05 (34.54-52.0) | 2.60 (66.0) | 2/0 | 0.813-1.152 (20.60-29.2) | | 37 (939) | 49 (1244) |
| CSJA-3525M10 | 35 kV | 1000-1250 | 1.63-2.36 (41.40-60.0) | 2.60 (66.0) | 2/0 | 1.060-1.251 (23.0-31.7) | | 37 (939) | 49 (1244) |

* Min/max diameter over cable conductor accepted by the aluminum mechanical connector.

Cold-Applied External Grounding Kit

| Catalog Number | Length of Moisture Blocked Braid | |
|----------------|----------------------------------|----|
| | Braid (AWG) | |
| CSJ-EG-1 | 24 (610) | #8 |
| CSJ-EG-2 | 24 (610) | #6 |
| CSJ-EG-3 | 24 (610) | #4 |



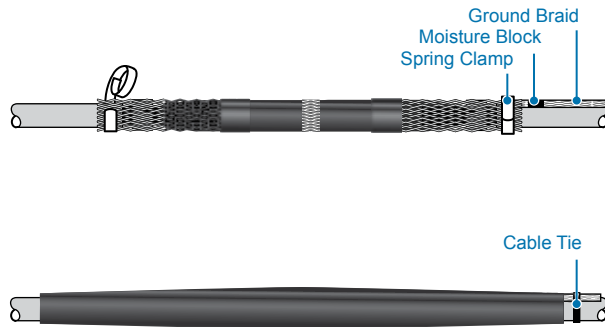
C_CSJA

CSJA

In-line Cold Shrinkable Joints for all 1/C Shielded Power Cables (15-35 kV)

TE Connectivity's Raychem introduces the "All-in-One" CSJA cold shrinkable joint for 15 kV through 35 kV. It is designed to splice tape shield, wire shield, LC shield, UniShield, JCN and flat strap shielded cables.

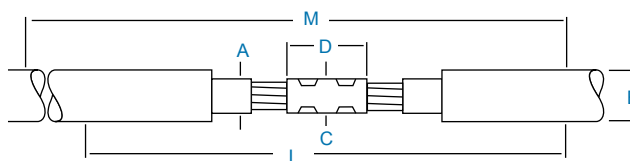
- This cable joint has a pre-expanded EPDM re-jacketing sleeve and an integrated neutral sock. The "All-in-One" design is easy to install with minimal steps and short installation time.
- A pre-expanded, single-piece silicone rubber joint body with high mechanical expansion capability allows a wide application range.
- An ergonomically designed spiral holdout provides a smooth installation with low release forces.
- Total length of the splice body on the holdout is 14 to 19 inches providing a compact design.
- The silicone rubber body provides high dielectric strength, high tear strength, low tension set, and excellent low temperature recovery.
- Integrated electrical stress control enhanced by factory molded stress cones and a Faraday cage.
- Void filling stress relief mastics are not necessary.
- Proven shield continuity concept which can also bridge concentric neutrals.
- The joint accepts both mechanical and compression connectors.
- When a ShearBolt connector is used, this is a totally crimpless system.
- Meets IEEE-404 requirements for 15 kV through 35 kV.
- Each silicone splice body is factory tested to include AC withstand and partial discharge in accordance with IEEE-404 production tests.



Ordering Information

1. Selections are based on the typical dimensions of 100% insulated cables, manufactured in accordance with AEIC standard. Nominal insulation thickness (100%): 15 kV: 175 mils, 25 kV:260 mils, 35 kV:345 mils.
2. Select the appropriate catalog number. Use the insulation OD, and jacket OD range as the final ordering criteria.
3. For mechanical ShearBolt connector included in the kit confirm the correct connector selection according to the Min/Max diameter over the cable conductor from the tables.
4. If external grounding is required, order the CSJ-EG kit.
5. For other applications or if you have any questions, contact your TE Connectivity representative.
6. Standard package: 1 kit per box.
7. Related test reports: EDR-5430, EDR-5455, EDR-5513
8. For AL Mechanical ShearBolt connector information request data sheet 9-1773440-4 and for CU request 165972.

Selection Information: Dimensions in Inches (millimeters)



| Catalog Number | Voltage Class | Nominal Cable Range | Insulation O.D. (Min.-Max.) | | OD (Max.) | Jacket Sock (AWG) | Neutral Min./Max Diameter Over Cable Conductor* | | Kit Installed Length L | Required Installation Space M |
|----------------|---------------|---------------------|-----------------------------|---|-----------|-------------------|---|---|------------------------|-------------------------------|
| | | | A | B | | | C | D | | |

CSJA Joint without Connector

| | | | | | | | | | |
|-----------|-------|----------|------------------------|-------------|-----|-------------|--------------|----------|-----------|
| CSJA-1521 | 15 kV | #2-350 | 0.69-1.20 (17.5-30.5) | 1.50 (38.1) | 1/0 | 1.30 (33.0) | 5.50 (140.0) | 29 (737) | 39 (990) |
| CSJA-1522 | 15 kV | 4/0-750 | 0.87-1.40 (22.1-35.6) | 1.80 (46.0) | 1/0 | 1.50 (38.0) | 5.50 (140.0) | 29 (737) | 39 (990) |
| CSJA-1523 | 15 kV | 350-1000 | 1.03-1.58 (26.2-40.0) | 2.05 (52.1) | 2/0 | 1.65 (42.0) | 6.69 (170.0) | 33 (838) | 43 (1090) |
| CSJA-1524 | 15 kV | 750-1250 | 1.28-2.05 (32.50-52.0) | 2.60 (66.0) | 2/0 | 1.85 (47.0) | 7.90 (200.0) | 37 (939) | 49 (1244) |
| CSJA-2822 | 28 kV | #1-500 | 0.87-1.40 (22.1-35.6) | 1.80 (46.0) | 1/0 | 1.50 (38.0) | 5.50 (140.0) | 29 (737) | 39 (990) |
| CSJA-2823 | 28 kV | 4/0-750 | 1.03-1.58 (26.20-40.0) | 2.05 (52.1) | 2/0 | 1.65 (42.0) | 6.69 (170.0) | 33 (838) | 43 (1090) |
| CSJA-2824 | 28 kV | 500-1250 | 1.28-2.05 (32.50-52.0) | 2.60 (66.0) | 2/0 | 1.85 (47.0) | 7.90 (200.0) | 37 (939) | 49 (1244) |
| CSJA-3523 | 35 kV | 1/0-350 | 1.03-1.49 (26.20-37.8) | 2.05 (52.1) | 2/0 | 1.40 (35.6) | 5.50 (140.0) | 33 (838) | 43 (1090) |
| CSJA-3524 | 35 kV | 350-1000 | 1.36-2.05 (34.54-52.0) | 2.60 (66.0) | 2/0 | 1.96 (50.0) | 7.90 (200.0) | 37 (939) | 49 (1244) |
| CSJA-3525 | 35 kV | 750-1250 | 1.63-2.36 (41.40-60.0) | 2.60 (66.0) | 2/0 | 2.36 (60.0) | 7.90 (200.0) | 37 (939) | 49 (1244) |

CSJA Joint With Copper Mechanical Shear Bolt Connector

| | | | | | | | | | |
|-------------|-------|---------|------------------------|-------------|-----|-------------------------|--|----------|-----------|
| CSJA-1521M1 | 15 kV | 2/0-350 | 0.69-1.20 (17.5-30.5) | 1.50 (38.1) | 1/0 | 0.376-0.736 (9.50-18.7) | | 29 (737) | 39 (990) |
| CSJA-1522M1 | 15 kV | 4/0-500 | 0.87-1.40 (22.1-35.6) | 1.80 (46.0) | 1/0 | 0.376-0.736 (9.50-18.7) | | 29 (737) | 39 (990) |
| CSJA-1522M2 | 15 kV | 350-750 | 0.87-1.40 (22.1-35.6) | 1.80 (46.0) | 1/0 | 0.570-0.945 (14.5-24.0) | | 29 (737) | 39 (990) |
| CSJA-1523M2 | 15 kV | 350-750 | 1.03-1.58 (26.2-40.0) | 2.05 (52.1) | 2/0 | 0.570-0.945 (14.5-24.0) | | 33 (838) | 43 (1090) |
| CSJA-2822M1 | 28 kV | 2/0-500 | 0.87-1.40 (22.1-35.6) | 1.80 (46.0) | 1/0 | 0.376-0.736 (9.50-18.7) | | 29 (737) | 39 (990) |
| CSJA-2823M2 | 28 kV | 350-750 | 1.03-1.58 (26.2-40.0) | 2.05 (52.1) | 2/0 | 0.570-0.945 (14.5-24.0) | | 33 (838) | 43 (1090) |
| CSJA-2824M2 | 28 kV | 500-750 | 1.28-2.05 (32.50-52.0) | 2.60 (66.0) | 2/0 | 0.570-0.945 (14.5-24.0) | | 37 (939) | 49 (1244) |
| CSJA-3523M1 | 35 kV | 2/0-350 | 1.03-1.49 (26.20-37.8) | 2.05 (52.1) | 2/0 | 0.376-0.736 (9.50-18.7) | | 33 (838) | 43 (1090) |
| CSJA-3524M2 | 35 kV | 350-750 | 1.36-2.05 (34.54-52.0) | 2.60 (66.0) | 2/0 | 0.570-0.945 (14.5-24.0) | | 37 (939) | 49 (1244) |

* Min./max. diameter over cable conductor accepted by the copper mechanical connector.

CSJA Joint with Aluminum Mechanical Shear Bolt Connector

| | | | | | | | | | |
|--------------|-------|-----------|------------------------|-------------|-----|--------------------------|--|----------|-----------|
| CSJA-1521M4 | 15 kV | #2-3/0 | 0.69-1.20 (17.5-30.5) | 1.50 (38.1) | 1/0 | 0.268-0.470 (6.80-11.9) | | 29 (737) | 39 (990) |
| CSJA-1521M5 | 15 kV | #2-350 | 0.69-1.20 (17.5-30.5) | 1.50 (38.1) | 1/0 | 0.268-0.681 (6.80-17.3) | | 29 (737) | 39 (990) |
| CSJA-1522M6 | 15 kV | 4/0-500 | 0.87-1.40 (22.1-35.6) | 1.80 (46.0) | 1/0 | 0.423-0.813 (10.7-20.6) | | 29 (737) | 39 (990) |
| CSJA-1522M7 | 15 kV | 500-750 | 0.87-1.40 (22.1-35.6) | 1.80 (46.0) | 1/0 | 0.736-0.998 (18.7-25.3) | | 29 (737) | 39 (990) |
| CSJA-1523M8 | 15 kV | 350-750 | 1.03-1.58 (26.20-40.0) | 2.05 (52.1) | 2/0 | 0.616-0.998 (15.7-25.3) | | 33 (838) | 43 (1090) |
| CSJA-1524M9 | 15 kV | 750-1000 | 1.28-2.05 (32.50-52.0) | 2.60 (66.0) | 2/0 | 0.813-1.152 (20.6-29.2) | | 37 (939) | 49 (1244) |
| CSJA-2822M5 | 28 kV | #1-350 | 0.87-1.40 (22.1-35.6) | 1.80 (46.0) | 1/0 | 0.268-0.681 (6.80-17.3) | | 29 (737) | 39 (990) |
| CSJA-2822M6 | 28 kV | 4/0-500 | 0.87-1.40 (22.1-35.6) | 1.80 (46.0) | 1/0 | 0.423-0.813 (10.7-20.6) | | 29 (737) | 39 (990) |
| CSJA-2823M8 | 28 kV | 350-750 | 1.03-1.58 (26.20-40.0) | 2.05 (52.1) | 2/0 | 0.616-0.998 (15.7-25.3) | | 33 (838) | 43 (1090) |
| CSJA-2824M8 | 28 kV | 500-750 | 1.28-2.05 (32.50-52.0) | 2.60 (66.0) | 2/0 | 0.616-0.998 (15.7-25.3) | | 37 (939) | 49 (1244) |
| CSJA-2824M9 | 28 kV | 750-1000 | 1.28-2.05 (32.50-52.0) | 2.60 (66.0) | 2/0 | 0.813-1.152 (20.60-29.2) | | 37 (939) | 49 (1244) |
| CSJA-3523M5 | 35 kV | 1/0-350 | 1.03-1.49 (26.20-37.8) | 2.05 (52.1) | 2/0 | 0.268-0.681 (6.8-17.3) | | 33 (838) | 43 (1090) |
| CSJA-3524M8 | 35 kV | 350-750 | 1.36-2.05 (34.54-52.0) | 2.60 (66.0) | 2/0 | 0.616-0.998 (15.7-25.3) | | 37 (939) | 49 (1244) |
| CSJA-3524M9 | 35 kV | 750-1000 | 1.36-2.05 (34.54-52.0) | 2.60 (66.0) | 2/0 | 0.813-1.152 (20.60-29.2) | | 37 (939) | 49 (1244) |
| CSJA-3525M10 | 35 kV | 1000-1250 | 1.63-2.36 (41.40-60.0) | 2.60 (66.0) | 2/0 | 1.060-1.251 (23.0-31.7) | | 37 (939) | 49 (1244) |

* Min/max diameter over cable conductor accepted by the aluminum mechanical connector.

Cold-Applied External Grounding Kit

| Catalog Number | Length of Moisture Blocked Braid | Braid (AWG) |
|----------------|----------------------------------|-------------|
| CSJ-EG-1 | 24 (610) | #8 |
| CSJ-EG-2 | 24 (610) | #6 |
| CSJ-EG-3 | 24 (610) | #4 |