

# CONNECTORS

## Compression Connectors

### Copper Splice Long Barrel

#### C Series

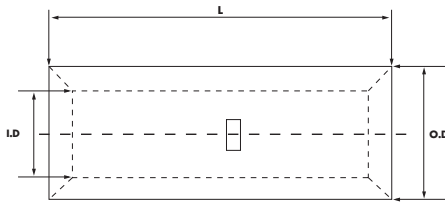


#### FEATURES

- Produced from high conductivity copper tubing.
- Serrations indicate proper crimp locations.
- Tin-plated to provide corrosion resistance.
- Marked with die index and color coded.
- Suitable for use at voltages up to 35KV provided connector is properly installed to cable manufacturer voltage stress relief instructions.
- 5KV is the maximum voltage in all bare splices.

#### SPECIFICATIONS

- UL486A Listed Wire Connector.
- UL467 Grounding & Bonding (Sizes 8 AWG - 3/0 AWG).
- Max ampacity is based on NEC 310.15, insulation type, and conductor material. Please consult your current NEC manual..
- \* CLASS B OR C BUILDING WIRE CU CABLE ONLY.
- Temperature Rating: 90 °C.
- Voltage: 600V max.
- 9CU.



**\*EXPANDED WIRE RANGE** when installed with NSI N121D dieless compression tool.  
UL Listed with other tools:

**FOR TOOL / DIE CRIMPING INFORMATION, PLEASE SEE TABLE ON PAGE 87**

| CAT. NO. | WIRE RANGE | EXPANDED WIRE RANGE* | COLOR CODE INDEX | I.D. (IN.) | O.D. (IN.) | LENGTH (L) (IN.) | STD. CTN. QTY. |
|----------|------------|----------------------|------------------|------------|------------|------------------|----------------|
| C-8      | 8 AWG      | 8 AWG                | Red              | 0.173      | 0.272      | 1.752            | 100            |
| C-6      | 6 AWG      | 6 - 8 AWG            | Blue             | 0.205      | 0.295      | 1.752            | 100            |
| C-4      | 4 AWG      | 4 - 6 AWG            | Gray             | 0.252      | 0.343      | 1.752            | 100            |
| C-3      | 3 AWG      | 3 - 6 AWG            | White            | 0.282      | 0.378      | 2.381            | 50             |
| C-2      | 2 AWG      | 2 - 6 AWG            | Brown            | 0.315      | 0.421      | 1.902            | 50             |
| C-1      | 1 AWG      | 1 - 6 AWG            | Green            | 0.358      | 0.469      | 2.201            | 50             |
| C-1/0    | 1/0 AWG    | 1/0 - 6 AWG          | Pink             | 0.390      | 0.520      | 2.201            | 50             |
| C-2/0    | 2/0 AWG    | 2/0 - 4 AWG          | Black            | 0.441      | 0.563      | 2.252            | 25             |
| C-3/0    | 3/0 AWG    | 3/0 - 2 AWG          | Orange           | 0.492      | 0.622      | 2.252            | 25             |
| C-4/0    | 4/0 AWG    | 4/0 - 1 AWG          | Purple           | 0.547      | 0.689      | 2.752            | 25             |
| C-250    | 250 MCM    | 250 MCM - 1/0 AWG    | Yellow           | 0.594      | 0.752      | 3.252            | 25             |
| C-300    | 300 MCM    | 300 MCM - 2/0 AWG    | White            | 0.657      | 0.815      | 3.504            | 12             |
| C-350    | 350 MCM    | 350 MCM - 3/0 AWG    | Red              | 0.701      | 0.874      | 3.752            | 12             |
| C-400    | 400 MCM    | 400 MCM - 4/0 AWG    | Blue             | 0.764      | 0.949      | 3.752            | 6              |
| C-500    | 500 MCM    | 500 - 250 MCM        | Brown            | 0.835      | 1.063      | 4.252            | 6              |
| C-600    | 600 MCM    | 600 - 250 MCM        | Green            | 0.925      | 1.189      | 4.500            | 6              |
| C-750    | 750 MCM    | 750-500 MCM          | Black            | 1.031      | 1.311      | 4.752            | 3              |
| C-1000   | 1000 MCM   | 1000-750 MCM         | White            | 1.189      | 1.527      | 6.122            | 3              |

# CONNECTORS

## Compression Connectors

### Copper Splice Long Barrel

#### C Series

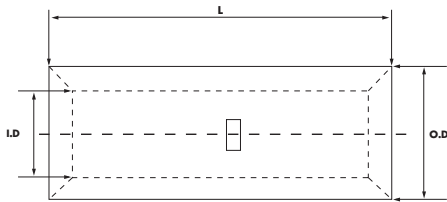


#### FEATURES

- Produced from high conductivity copper tubing.
- Serrations indicate proper crimp locations.
- Tin-plated to provide corrosion resistance.
- Marked with die index and color coded.
- Suitable for use at voltages up to 35KV provided connector is properly installed to cable manufacturer voltage stress relief instructions.
- 5KV is the maximum voltage in all bare splices.

#### SPECIFICATIONS

- UL486A Listed Wire Connector.
- UL467 Grounding & Bonding (Sizes 8 AWG - 3/0 AWG).
- Max ampacity is based on NEC 310.15, insulation type, and conductor material. Please consult your current NEC manual..
- \* CLASS B OR C BUILDING WIRE CU CABLE ONLY.
- Temperature Rating: 90 °C.
- Voltage: 600V max.
- 9CU.



**\*EXPANDED WIRE RANGE** when installed with NSI N121D dieless compression tool.  
UL Listed with other tools:

**FOR TOOL/DIE CRIMPING INFORMATION, PLEASE SEE TABLE ON PAGE 87**

| CAT. NO. | WIRE RANGE | EXPANDED WIRE RANGE* | COLOR CODE INDEX | I.D. (IN.) | O.D. (IN.) | LENGTH (L) (IN.) | STD. CTN. QTY. |
|----------|------------|----------------------|------------------|------------|------------|------------------|----------------|
| C-8      | 8 AWG      | 8 AWG                | Red              | 0.173      | 0.272      | 1.752            | 100            |
| C-6      | 6 AWG      | 6 - 8 AWG            | Blue             | 0.205      | 0.295      | 1.752            | 100            |
| C-4      | 4 AWG      | 4 - 6 AWG            | Gray             | 0.252      | 0.343      | 1.752            | 100            |
| C-3      | 3 AWG      | 3 - 6 AWG            | White            | 0.282      | 0.378      | 2.381            | 50             |
| C-2      | 2 AWG      | 2 - 6 AWG            | Brown            | 0.315      | 0.421      | 1.902            | 50             |
| C-1      | 1 AWG      | 1 - 6 AWG            | Green            | 0.358      | 0.469      | 2.201            | 50             |
| C-1/0    | 1/0 AWG    | 1/0 - 6 AWG          | Pink             | 0.390      | 0.520      | 2.201            | 50             |
| C-2/0    | 2/0 AWG    | 2/0 - 4 AWG          | Black            | 0.441      | 0.563      | 2.252            | 25             |
| C-3/0    | 3/0 AWG    | 3/0 - 2 AWG          | Orange           | 0.492      | 0.622      | 2.252            | 25             |
| C-4/0    | 4/0 AWG    | 4/0 - 1 AWG          | Purple           | 0.547      | 0.689      | 2.752            | 25             |
| C-250    | 250 MCM    | 250 MCM - 1/0 AWG    | Yellow           | 0.594      | 0.752      | 3.252            | 25             |
| C-300    | 300 MCM    | 300 MCM - 2/0 AWG    | White            | 0.657      | 0.815      | 3.504            | 12             |
| C-350    | 350 MCM    | 350 MCM - 3/0 AWG    | Red              | 0.701      | 0.874      | 3.752            | 12             |
| C-400    | 400 MCM    | 400 MCM - 4/0 AWG    | Blue             | 0.764      | 0.949      | 3.752            | 6              |
| C-500    | 500 MCM    | 500 - 250 MCM        | Brown            | 0.835      | 1.063      | 4.252            | 6              |
| C-600    | 600 MCM    | 600 - 250 MCM        | Green            | 0.925      | 1.189      | 4.500            | 6              |
| C-750    | 750 MCM    | 750-500 MCM          | Black            | 1.031      | 1.311      | 4.752            | 3              |
| C-1000   | 1000 MCM   | 1000-750 MCM         | White            | 1.189      | 1.527      | 6.122            | 3              |