

## 3 3/4" ROUND OLD WORK BOX

C118WAC | [Pass & Seymour](#)

---

### FEATURES & BENEFITS

3 3/4" Round Old Work Box with Swing brackets for mounting that adjust from 1 1/4" down to 1/8". Four Auto/Clamps, Includes Device mounting holes. 50 pack.



- Box designed so mounting strap of the device, with plaster ears removed, fits flush, allowing use of standard depth wall plate without unsightly gap between plate and wall surface.
- Swing out wing brackets permit installation of box in wall with 1 1/4 inch thick wallboard down to 1/8 inch thick paneling.
- New longer swing brackets have greater reach to clamp onto oversize cutouts.
- Made of high impact thermoplastic.
- Combination slotted/Phillips head swing bracket screws.
- Include exclusive Auto/Clamp feature.
- Suitable for in-wall use.
- Suitable for in-ceiling use for supporting weights up to up to 6 lbs.
- Includes device mounting holes.
- For covering patents, see [www.legrand.us/patents](http://www.legrand.us/patents).

---

### SPECIFICATIONS

#### GENERAL INFO

Size: 3 1/4"

Type: Round Old Work Box

Special Features: Round

#### LISTING AGENCIES/THIRD PARTY CERTIFICATIONS

RoHS: Yes  
CSA Listing Info: No  
CUL Listing No: No  
cULus: No  
cURus: No  
Federal Spec: No  
UL Listing No: Yes  
UN SPSC: 39121308  
UR: No

#### **DIMENSIONS**

Depth (US): 2.6875  
Diameter (US): 3.75  
Volume: 18.0

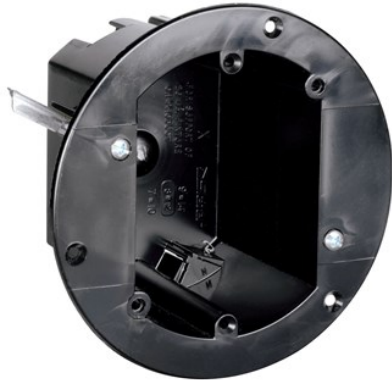
#### **TECHNICAL INFORMATION**

Material: Plastic  
Mounting: Captive mounting nails  
Shape: round

#### **BUY AMERICAN ACT COMPLIANCE**

Country Of Origin: UNITED STATES OF AMERICA  
Buy American Act Status: Buy American Act Compliant





## 3 3/4" ROUND OLD WORK BOX

C118WAC | [Pass & Seymour](#)

### FEATURES & BENEFITS

3 3/4" Round Old Work Box with Swing brackets for mounting that adjust from 1 1/4" down to 1/8". Four Auto/Clamps, Includes Device mounting holes. 50 pack.



- Box designed so mounting strap of the device, with plaster ears removed, fits flush, allowing use of standard depth wall plate without unsightly gap between plate and wall surface.
- Swing out wing brackets permit installation of box in wall with 1 1/4 inch thick wallboard down to 1/8 inch thick paneling.
- New longer swing brackets have greater reach to clamp onto oversize cutouts.
- Made of high impact thermoplastic.
- Combination slotted/Phillips head swing bracket screws.
- Include exclusive Auto/Clamp feature.
- Suitable for in-wall use.
- Suitable for in-ceiling use for supporting weights up to up to 6 lbs.
- Includes device mounting holes.
- For covering patents, see [www.legrand.us/patents](http://www.legrand.us/patents).

### SPECIFICATIONS

#### GENERAL INFO

Size: 3 1/4"

Type: Round Old Work Box

Special Features: Round

#### LISTING AGENCIES/THIRD PARTY CERTIFICATIONS

RoHS: Yes  
CSA Listing Info: No  
CUL Listing No: No  
cULus: No  
cURus: No  
Federal Spec: No  
UL Listing No: Yes  
UN SPSC: 39121308  
UR: No

#### **DIMENSIONS**

Depth (US): 2.6875  
Diameter (US): 3.75  
Volume: 18.0

#### **TECHNICAL INFORMATION**

Material: Plastic  
Mounting: Captive mounting nails  
Shape: round

#### **BUY AMERICAN ACT COMPLIANCE**

Country Of Origin: UNITED STATES OF AMERICA  
Buy American Act Status: Buy American Act Compliant

