

Carlton® Blue™ PVC Boxes

Carlton® Blue™ PVC Boxes

Carlton® non-metallic boxes feature PVC construction for easier installation, greater performance and lower installation cost. Designed and listed for use with non-metallic sheathed cable in accordance with Article 314 of the National Electrical Code®, they make fast work of any residential or light commercial application.

- All PVC boxes are listed to UL514C
- All PVC boxes are listed for masonry walls

- All PVC boxes are UL Classified for two-hour fire wall and/or fire ceiling
- All PVC boxes meet NEMA OS-2
- All PVC boxes are permissible for use with 90° C conductors
- UL File E11461 and R9140

One-Gang Adjustable — For New Work

- Design enables adjustment from 0" to 1¼" after installation
- Ideal for new work or retrofit upgrade applications
- Backless low-voltage bracket and floor box designs available
- Ideal for various drywall thicknesses and wall finishes

One-Gang Adjustable 21.0 Cu. In.



CAT. NO.	SIZE CU. IN.	MOUNTING MEANS	DESCRIPTION	DIMENSIONS (IN.)	STD. CTN.
B121ADJ	21.0	Adjustable Bracket	Adjusts 0"–1¼"	3.65 L x 2.25 W x 3.32 D	24



B121ADJ

NEC and National Electrical Code are registered trademarks of the National Fire Protection Association, Inc.

One-Gang Nail-On — For New Work

One-Gang Nail-On 18.0–20.5 Cu. In.



CAT. NO.	SIZE CU. IN.	MOUNTING MEANS	DESCRIPTION	DIMENSIONS (IN.)	STD. CTN.
B118A	18.0	Captive Nails	—	3¾ L x 2¼ W x 2⅝ D	100
N1-710-M	18.0	Reverse Angled Side Nails	⅞" Offset Wallboard Tabs	3¾ L x 2¼ W x 2⅞ D	100
RN-18-FS	18.0	Recessed Angled Nails	Fast-Set	3⅝ L x 2⅞ W x 3 D	100
SNO-18	18.0	Angled Side Nails	Hinge Closure	4⅞ L x 2⅞ opening 3⅞ overall W x 1¾ D	100
SNO-18-M	18.0	Angled Side Nails	Locating Tab Hinge Closure ⅞" Offset Wall Board Tabs	4⅞ L x 2⅞ opening 3⅞ overall W x 1¾ D	100
B120A-UPC	20.0	Captive Nails	—	3⅞ L x 2¼ W x 3¼ D	100
RN-21-FS	20.5	Recessed Angled Nails	Fast-Set	3⅝ L x 2⅞ W x 3⅞ D	100



B118A



N1-710-M



RN-18-FS



SNO-18



B120A-UPC



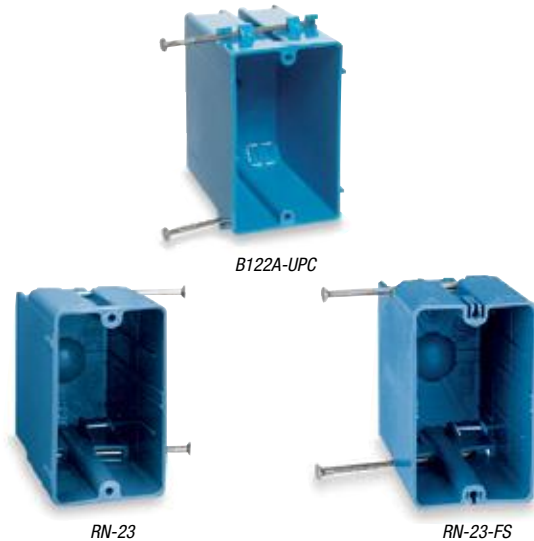
RN-21-FS

Carlton® Blue™ PVC Boxes

One-Gang Nail-On — For New Work

One-Gang Nail-On 22.0–22.5 Cu. In.

CAT. NO.	SIZE CU. IN.	MOUNTING MEANS	DESCRIPTION	DIMENSIONS (IN.)	STD. CTN.
B122A-UPC	22.0	Captive Nails	—	3¾ L x 2¼ W x 3½ D	100
RN-23	22.5	Recessed Angled Nails	—	3 ²¹ / ₃₂ L x 2 ⁵ / ₁₆ W x 3 ³ / ₈ D	100
RN-23-FS	22.5	Recessed Angled Nails	Fast-Set	3 ²¹ / ₃₂ L x 2 ⁵ / ₁₆ W x 3 ³ / ₈ D	100



One-Gang Nail-On 30.0 Cu. In.

CAT. NO.	SIZE CU. IN.	MOUNTING MEANS	DESCRIPTION	DIMENSIONS (IN.)	STD. CTN.
RD-30	30.0	Recessed Angled Nails	Large KO for #6 or #8 Cable	3 ¹¹ / ₁₆ L x 2 ⁵ / ₁₆ opening overall W x 3 ³ / ₈ D	50



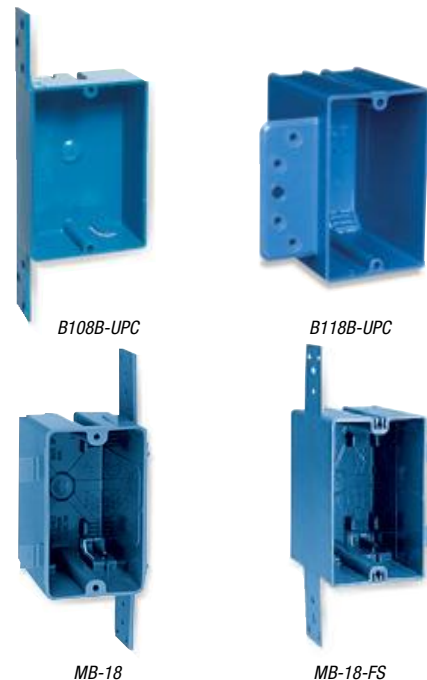
RD-30

One-Gang Brackets — For New Work

One-Gang Brackets 8.0–18.0 Cu. In.

CAT. NO.	SIZE CU. IN.	MOUNTING MEANS	DESCRIPTION	DIMENSIONS (IN.)	STD. CTN.
B108B-UPC	8.0	Bracket	—	3 ⁵ / ₈ L x 2 ³ / ₈ W x 1¼ D	25
B118B-UPC	18.0	Bracket for ¾" to 5/8" Wallboard – Steel and Wood Stud Mounting	—	3¾ L x 2¼ W x 2 ⁵ / ₁₆ D	5
MB-18 •	18.0	Molded Side Bracket for Wood/Steel Studs	½" Depth Gage Lever Clamps	3 ²¹ / ₃₂ L x 2 ⁵ / ₁₆ W x 2 ⁵ / ₁₆ D	100
MB-18-FS •	18.0	Molded Side Bracket for Wood/Steel Studs	Fast-Set	3 ²¹ / ₃₂ L x 2 ⁵ / ₁₆ W x 2 ⁵ / ₁₆ D	100

• Manufactured housing — MB-18 and MB-18-FS.



Carlton® Blue™ PVC Boxes

Two-Gang Adjustable — For New Work

- Design enables adjustment from 0" to 1¾" after installation
- Ideal for new work or retrofit upgrade applications
- Backless low-voltage bracket and floor box designs available
- Ideal for various drywall thicknesses and wall finishes



B234ADJ

Two-Gang Adjustable 34.0 Cu. In.

CAT. NO.	SIZE CU. IN.	MOUNTING MEANS	DESCRIPTION	DIMENSIONS (IN.)	STD. CTN.
B234ADJ	34.0	Adjustable Bracket	Adjusts 0"–1¾"	4 W x 3¾ H x 3 D	16
B234ADJC	34.0	Adjustable Bracket	Large 220V Knockout	5¾ W x 3¾ H x 3 D	16

Two-Gang Nail-On — For New Work



B232A-UPC



N2-1614-RNC



SN-236-V



SN-241



N2-1614-MNC



SN-236



SN-236-FS



SN-241-FS

Two-Gang Nail-On 32.0–41.0 Cu. In.

CAT. NO.	SIZE CU. IN.	MOUNTING MEANS	DESCRIPTION	DIMENSIONS (IN.)	STD. CTN.
B232A-UPC	32.0	Captive Nails	—	3¾ L x 4 W x 3 D	50
N2-1614-MNC	32.0	Angled Side Nails	¾" Offset Wallboard Tabs Cable-Lok™ Clamps Bulk Packed	4¼ L x 3¾ W x 2¼ D	50
N2-1614-RNC	32.0	Angled Side Nails	No Wallboard Tabs Cable-Lok™ Clamps Bulk Packed	4¼ L x 3¾ W x 2¼ D	50
SN-236	36.0	Compound Angled Nails	¾" Offset Wallboard Tabs Molded Fast Clamp	4 L x 3¾ W x 3½ D	50
SN-236-FS	36.0	Compound Angled Nails	¾" Offset Wallboard Tabs Molded Fast Clamp/Fast Set	4 L x 3¾ W x 3½ D	50
SN-236-V	36.0	Compound Angled Nails	¾" Offset Wallboard Tabs Molded V-Clamp	4 L x 3¾ W x 3½ D	50
SN-241	41.0	Compound Angled Nails	¾" Offset Wallboard Tabs Molded Fast Clamp	4 L x 3¾ W x 3¾ D	50
SN-241-FS	41.0	Compound Angled Nails	¾" Offset Wallboard Tabs Molded Fast Clamp/Fast Set	4 L x 3¾ W x 3¾ D	50

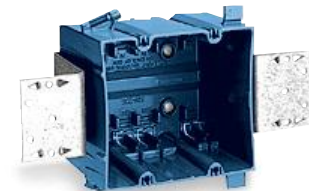
Two-Gang Bracket — For New Work

Two-Gang Bracket 32.0–36.0 Cu. In.

CAT. NO.	SIZE CU. IN.	MOUNTING MEANS	DESCRIPTION	DIMENSIONS (IN.)	STD. CTN.
B232B-UPC	32.0	Bracket for ¾" to 5/8" Wallboard — Steel or Wood Stud Mounting	—	3¾ L x 4 W x 3 D	50
SB2-236-FS	36.0	Two ¾" Offset Wallboard Tabs; Molded Fast Clamps/Fast Set	¾" Offset	3¾ L x 4 W x 3¾ D	20



B232B-UPC



SB2-236-FS

Carlton® Blue™ PVC Boxes

Three-Gang Adjustable — For New Work

- Design enables adjustment from 0" to 1¼" after installation
- Ideal for new work or retrofit upgrade applications
- Backless low-voltage bracket and floor box designs available
- Ideal for various drywall thicknesses and wall finishes

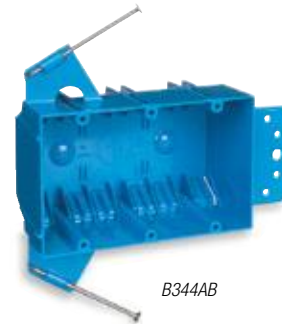


B349ADJ

Three-Gang Adjustable 49.0 Cu. In.

CAT. NO.	SIZE CU. IN.	MOUNTING MEANS	DESCRIPTION	DIMENSIONS (IN.)	STD. CTN.
B349ADJ	49.0	Adjustable Bracket	Adjusts 0"–1¼"	5 ¹⁹ / ₁₆ L x 3 ³ / ₈ W x 3 D	16

Three-Gang Nail-On — For New Work



B344AB

Three-Gang Nail-On 44.0–56.5 Cu. In.

CAT. NO.	SIZE CU. IN.	MOUNTING MEANS	DESCRIPTION	DIMENSIONS (IN.)	STD. CTN.
B344AB	44.0	Captive Nails and Bracket Support	—	5 ⁵ / ₈ L x 3 ³ / ₄ W x 2 ¹ / ₁₆ D	30
SN-357	56.5	Compound Angled Nails	¾" Offset Wallboard Tabs Molded Fast Clamps	5 ¹⁹ / ₁₆ L x 3 ³ / ₈ W x 3 ⁷ / ₁₆ D	20
SN-357-FS	56.5	Compound Angled Nails	¾" Offset Wallboard Tabs Molded Fast Clamps/Fast Set	5 ¹⁹ / ₁₆ L x 3 ³ / ₈ W x 3 ⁷ / ₁₆ D	20



SN-357-FS



SS-357

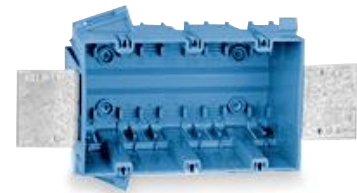
Three-Gang Bracket — For New Work

Three-Gang Bracket 56.5 Cu. In.

CAT. NO.	SIZE CU. IN.	MOUNTING MEANS	DESCRIPTION	DIMENSIONS (IN.)	STD. CTN.
SB-357	56.5	One ¾" Offset Bracket for Wood/Steel Studs	¾" Wallboard Tabs Molded Fast Clamps/Fast Set	3 ³ / ₈ L x 5 ¹⁹ / ₁₆ W x 3 ⁷ / ₁₆ D	30
SB2-357-FS	56.5	Two ¾" Offset Brackets for Wood/Steel Studs	¾" Wallboard Tabs Molded Fast Clamps/Fast Set	3 ³ / ₈ L x 5 ¹⁹ / ₁₆ W x 3 ⁷ / ₁₆ D	20



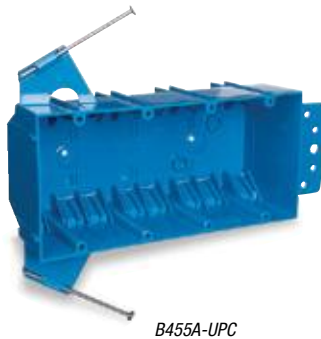
SB-357



SB2-357-FS

Carlton® Blue™ PVC Boxes

Four-Gang Nail-On — For New Work



B455A-UPC



B455AH



Four-Gang Nail-On 55 Cu. In.

CAT. NO.	SIZE CU. IN.	MOUNTING MEANS	DESCRIPTION	DIMENSIONS (IN.)	STD. CTN.
B455AH	55.0	Captive Nails, Bracket Support and Hanger Bar	—	7 $\frac{7}{8}$ L x 3 $\frac{3}{16}$ W x 2 $\frac{1}{2}$ D	25
B455A-UPC	55.0	Captive Nails and Bracket Support	—	7 $\frac{7}{8}$ L x 3 $\frac{3}{16}$ W x 2 $\frac{1}{2}$ D	25

4" Square — For New Work



B418A-UPC



4S-812C



B432A-UPC



4" Square 18.0–32.0 Cu. In.

CAT. NO.	SIZE CU. IN.	MOUNTING MEANS	DESCRIPTION	DIMENSIONS (IN.)	STD. CTN.
4S-812C	18.0	Angled Side Nails	—	1 $\frac{1}{16}$ D x 4 W x 4 L	100
B418A-UPC	18.0	Captive Nails	—	1 $\frac{5}{8}$ D x 4 W x 4 L	75
B432A-UPC	32.0	Captive Nails	—	2 $\frac{5}{8}$ D x 4 W x 4 L	50

Carlton® Blue™ PVC Boxes

One-Gang — For Old Work

Boxes & Covers — Carlton® Non-Metallic Boxes



B114R-UPC



B108R-UPC

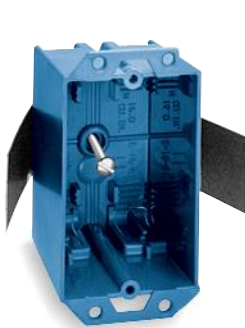


B117RSW

One-Gang 8.0–17.0 Cu. In.

CAT. NO.	SIZE CU. IN.	MOUNTING MEANS	DESCRIPTION	DIMENSIONS (IN.)	STD. CTN.
B108R-UPC •	8.0	Mounting Ears	—	3½ L x 2¼ W x 1¼ D	25
B114R-UPC •	14.0	Mounting Ears and Swing Clamps	—	4½ L x 2¼ W x 2¼ D	50
B117RSW •	17.0	Mounting Ears and Swing Clamps	Access Panel	3.64 L x 4.07 W x 2.00 D (2.20 opening)	30

• Not UL Classified for Fire Resistance.



E-16-8



E18-4



B120R

One-Gang 16.0–20.0 Cu. In.

CAT. NO.	SIZE CU. IN.	MOUNTING MEANS	DESCRIPTION	DIMENSIONS (IN.)	STD. CTN.
E-16-8	16.0	Thermoplastic Molded Ears #4 Snap-In	Molded Fast Clamps	3½ L x 2¼ W x 2¼ D	50
E-18-4	18.0	Thermoplastic Molded Ears #4 Swing Brackets	Integral Molded V-Clamp	3¾ L x 2¾ W x 2¼ D	100
B120R •	20.0	Mounting Ears and Swing Bracket	—	4½ L x 2¾ W x 3¾ D	50

• Not UL Classified for Fire Resistance.

Carlton® Blue™ PVC Boxes

Two-Gang — For Old Work

Two-Gang 25.0 Cu. In.

CAT. NO.	SIZE CU. IN.	MOUNTING MEANS	DESCRIPTION	DIMENSIONS (IN.)	STD. CTN.
B225R-UPC •	25.0	Mounting Ears and Two Swing Clamps	—	3 ¹⁵ / ₁₆ L x 3 ³ / ₈ W x 2 ³ / ₄ D	30

• Not UL Classified for Fire Resistance.



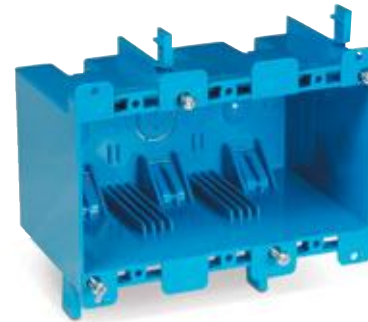
B225R-UPC

Three-Gang — For Old Work

Three-Gang 55.0 Cu. In.

CAT. NO.	SIZE CU. IN.	MOUNTING MEANS	DESCRIPTION	DIMENSIONS (IN.)	STD. CTN.
B355R •	55.0	Mounting Ears and Two Swing Clamps	—	5.72 L x 2.79 W x 3.69 D	6

• Not UL Classified for Fire Resistance.



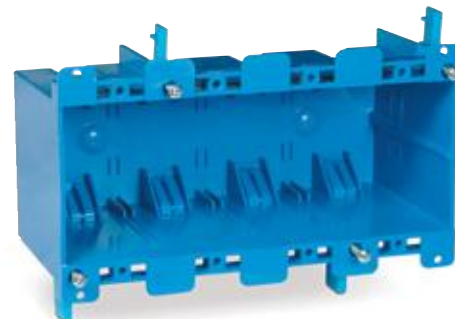
B355R

Four-Gang — For Old Work

Four-Gang 68.0 Cu. In.

CAT. NO.	SIZE CU. IN.	MOUNTING MEANS	DESCRIPTION	DIMENSIONS (IN.)	STD. CTN.
B468R •	68.0	Mounting Ears and Two Swing Clamps	—	7.57 L x 2.89 W x 3.56 D	6

• Not UL Classified for Fire Resistance.



B468R

Carlton® SuperBlue® Boxes

Carlton® SuperBlue® Boxes

Combine the features of the hard-shell thermoset box and the thermoplastic PVC-style box to create a “new” rigid non-metallic wiring box. Molded out of specially formulated thermoplastic material, Carlton® SuperBlue® boxes are so strong they won’t crack or break in extreme environments. So rigid that they resist flexing and hold their shape even in the most challenging applications. The boxes are designed to nest inside each other to take up less space on the shelf or in the truck, while still providing the largest wirefill capacity in their class.

- All PVC boxes are listed to UL514C
- All PVC boxes are listed for masonry walls
- All PVC boxes are UL® Classified for two-hour fire wall and/or fire ceiling
- All PVC boxes meet NEMA OS-2
- All PVC boxes are permissible for use with 90° C conductors
- UL File E11461 and R9140

One-Gang — For New Work

One-Gang 22.0 Cu. In.

CAT. NO.	SIZE CU. IN.	MOUNTING MEANS	DESCRIPTION	DIMENSIONS (IN.)	STD. CTN.
BH122A-UPC	22.0	Nails	One-Gang	3.55 L x 2.11 W x 3.63 D	100
BH122S	22.0	Screws	One-Gang	3.55 L x 2.11 W x 3.63 D	100



BH122A-UPC

Two-Gang — For New Work

Two-Gang 35.0 Cu. In.

CAT. NO.	SIZE CU. IN.	MOUNTING MEANS	DESCRIPTION	DIMENSIONS (IN.)	STD. CTN.
BH235A	35.0	Nails	Two-Gang	3.55 L x 2.11 W x 3.50 D	48
BH235S	35.0	Screws	Two-Gang	3.55 L x 2.11 W x 3.50 D	48



BH235A

Carlton® SuperBlue® Boxes

Three-Gang — For New Work

Three-Gang 53 Cu. In.

CAT. NO.	SIZE CU. IN.	MOUNTING MEANS	DESCRIPTION	DIMENSIONS (IN.)	STD. CTN.
BH353A	53.0	Nails	Three-Gang	3.53 L x 5.66 W x 3.50 D	24
BH353S	53.0	Screws	Three-Gang	3.53 L x 5.66 W x 3.50 D	24



BH353A

Four-Gang — For New Work

Four-Gang 64 Cu. In.

CAT. NO.	SIZE CU. IN.	MOUNTING MEANS	DESCRIPTION	DIMENSIONS (IN.)	STD. CTN.
BH464A	64.0	Nails	Four-Gang	3.53 L x 7.46 W x 3.18 D	36
BH464S	64.0	Screws	Four-Gang	3.53 L x 7.46 W x 3.18 D	36



BH464A

One-Gang — For Old Work

One-Gang 18.0 Cu. In.

CAT. NO.	SIZE CU. IN.	MOUNTING MEANS	DESCRIPTION	DIMENSIONS (IN.)	STD. CTN.
BH118R •	18.0	Mounting Ears & Swing Clamps	One-Gang	4.30 L x 2.56 W x 3.64 D	36

• Not UL Classified for Fire Resistance.



BH118R

Two-Gang — For Old Work

Two-Gang 34.0 Cu. In.

CAT. NO.	SIZE CU. IN.	MOUNTING MEANS	DESCRIPTION	DIMENSIONS (IN.)	STD. CTN.
BH234R •	34.0	Mounting Ears & Swing Clamps	Two-Gang	4.30 L x 4.36 W x 3.59 D	18

• Not UL Classified for Fire Resistance.



BH234R

Carlton® SuperBlue® Boxes

Ceiling Boxes

3/0-4/0 Combination 25.0 Cu. In.

CAT. NO.	SIZE CU. IN.	MOUNTING MEANS	DESCRIPTION	DIMENSIONS (IN.)	STD. CTN.
BH525A-UPC •	25.0	Nails	Ceiling Box	4 Dia. x 3.00 D	48
BH525P •	25.0	Nails and Grounding Lug	Ceiling Box	4 Dia. x 3.00 D	24

• Listed for fixture support up to 50 lbs.



BH525A-UPC

BH525P

Fan Box 25.0 Cu. In.

CAT. NO.	SIZE CU. IN.	MOUNTING MEANS	DESCRIPTION	DIMENSIONS (IN.)	STD. CTN.
BH525L •	25.0	Nails	Ceiling Fan Box	4 Dia. x 3.00 D	24
BH525LP •	25.0	Grounding Lug with Nails	Ceiling Fan Box	4 Dia. x 3.00 D	24

• Listed for fan support up to 35 lbs. and fixture support up to 50 lbs.



BH525L

Ceiling Box with Hanger Bar 25.0 Cu. In.

CAT. NO.	SIZE CU. IN.	MOUNTING MEANS	DESCRIPTION	DIMENSIONS (IN.)	STD. CTN.
BH525H •	25.0	Hanger Bar 11½"-18½"	Ceiling Box	4 Dia. x 2.95 D	20
BH525HP •	25.0	Hanger Bar 11½"-18½", Grounding Lug	Ceiling Box	4 Dia. x 2.95 D	20

• Listed for fixture support up to 50 lbs.



BH525H

3½" 14.5 Cu. In.

CAT. NO.	SIZE CU. IN.	MOUNTING MEANS	DESCRIPTION	DIMENSIONS (IN.)	STD. CTN.
BH614R • †	14.5	Base, Ears & Snap-In Bracket	Round Old/New Work Box	3½ Dia.	24
BH614RP • †	14.5	Base, Ears & Snap-In Bracket	Round Old/New Work Box w/ Ground Lug	3½ Dia.	24

• Listed for wall fixture support up to 10 lbs.

† Tighten screws to 10 in.-lbs.



BH614R

Carlton® Blue™ PVC Boxes

Carlton® Blue™ PVC Boxes

Carlton® non-metallic boxes feature PVC construction for easier installation, greater performance and lower installation cost. Designed and listed for use with non-metallic sheathed cable in accordance with Article 314 of the National Electrical Code®, they make fast work of any residential or light commercial application.

- All PVC boxes are listed to UL514C
- All PVC boxes are listed for masonry walls

- All PVC boxes are UL Classified for two-hour fire wall and/or fire ceiling
- All PVC boxes meet NEMA OS-2
- All PVC boxes are permissible for use with 90° C conductors
- UL File E11461 and R9140

One-Gang Adjustable — For New Work

- Design enables adjustment from 0" to 1¼" after installation
- Ideal for new work or retrofit upgrade applications
- Backless low-voltage bracket and floor box designs available
- Ideal for various drywall thicknesses and wall finishes

One-Gang Adjustable 21.0 Cu. In.



CAT. NO.	SIZE CU. IN.	MOUNTING MEANS	DESCRIPTION	DIMENSIONS (IN.)	STD. CTN.
B121ADJ	21.0	Adjustable Bracket	Adjusts 0"–1¼"	3.65 L x 2.25 W x 3.32 D	24



B121ADJ

NEC and National Electrical Code are registered trademarks of the National Fire Protection Association, Inc.

One-Gang Nail-On — For New Work

One-Gang Nail-On 18.0–20.5 Cu. In.



CAT. NO.	SIZE CU. IN.	MOUNTING MEANS	DESCRIPTION	DIMENSIONS (IN.)	STD. CTN.
B118A	18.0	Captive Nails	—	3¾ L x 2¼ W x 2⅞ D	100
N1-710-M	18.0	Reverse Angled Side Nails	⅞" Offset Wallboard Tabs	3¾ L x 2¼ W x 2⅞ D	100
RN-18-FS	18.0	Recessed Angled Nails	Fast-Set	3⅞ L x 2⅞ W x 3 D	100
SNO-18	18.0	Angled Side Nails	Hinge Closure	4⅞ L x 2⅞ opening 3⅞ overall W x 1¾ D	100
SNO-18-M	18.0	Angled Side Nails	Locating Tab Hinge Closure ⅞" Offset Wall Board Tabs	4⅞ L x 2⅞ opening 3⅞ overall W x 1¾ D	100
B120A-UPC	20.0	Captive Nails	—	3⅞ L x 2¼ W x 3¼ D	100
RN-21-FS	20.5	Recessed Angled Nails	Fast-Set	3⅞ L x 2⅞ W x 3⅞ D	100



B118A



N1-710-M



RN-18-FS



SNO-18



B120A-UPC



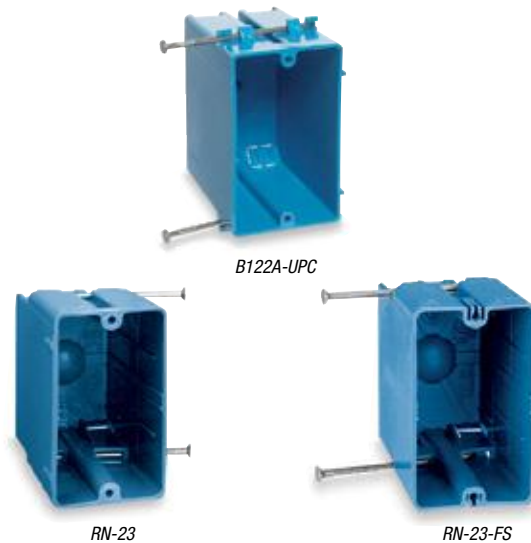
RN-21-FS

Carlton® Blue™ PVC Boxes

One-Gang Nail-On — For New Work

One-Gang Nail-On 22.0–22.5 Cu. In.

CAT. NO.	SIZE CU. IN.	MOUNTING MEANS	DESCRIPTION	DIMENSIONS (IN.)	STD. CTN.
B122A-UPC	22.0	Captive Nails	—	3¾ L x 2¼ W x 3½ D	100
RN-23	22.5	Recessed Angled Nails	—	3 ²¹ / ₃₂ L x 2 ⁵ / ₁₆ W x 3¾ D	100
RN-23-FS	22.5	Recessed Angled Nails	Fast-Set	3 ²¹ / ₃₂ L x 2 ⁵ / ₁₆ W x 3¾ D	100



B122A-UPC

RN-23

RN-23-FS

One-Gang Nail-On 30.0 Cu. In.

CAT. NO.	SIZE CU. IN.	MOUNTING MEANS	DESCRIPTION	DIMENSIONS (IN.)	STD. CTN.
RD-30	30.0	Recessed Angled Nails	Large KO for #6 or #8 Cable	3 ¹¹ / ₁₆ L x 2 ⁵ / ₁₆ opening overall W x 3¾ D	50



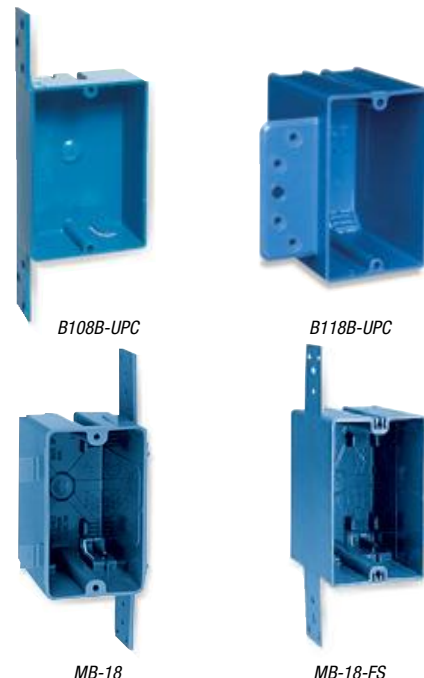
RD-30

One-Gang Brackets — For New Work

One-Gang Brackets 8.0–18.0 Cu. In.

CAT. NO.	SIZE CU. IN.	MOUNTING MEANS	DESCRIPTION	DIMENSIONS (IN.)	STD. CTN.
B108B-UPC	8.0	Bracket	—	3¾ L x 2¾ W x 1¼ D	25
B118B-UPC	18.0	Bracket for ¾" to 5/8" Wallboard – Steel and Wood Stud Mounting	—	3¾ L x 2¼ W x 2 ⁵ / ₁₆ D	5
MB-18 •	18.0	Molded Side Bracket for Wood/Steel Studs	½" Depth Gage Lever Clamps	3 ²¹ / ₃₂ L x 2 ⁵ / ₁₆ W x 2 ⁵ / ₁₆ D	100
MB-18-FS •	18.0	Molded Side Bracket for Wood/Steel Studs	Fast-Set	3 ²¹ / ₃₂ L x 2 ⁵ / ₁₆ W x 2 ⁵ / ₁₆ D	100

• Manufactured housing — MB-18 and MB-18-FS.



B108B-UPC

B118B-UPC

MB-18

MB-18-FS

Boxes & Covers — Carlton® Non-Metallic Boxes

Carlton® Blue™ PVC Boxes

Two-Gang Adjustable — For New Work

- Design enables adjustment from 0" to 1¾" after installation
- Ideal for new work or retrofit upgrade applications
- Backless low-voltage bracket and floor box designs available
- Ideal for various drywall thicknesses and wall finishes

**Carlton
Exclusive**



B234ADJ

Two-Gang Adjustable 34.0 Cu. In.

CAT. NO.	SIZE CU. IN.	MOUNTING MEANS	DESCRIPTION	DIMENSIONS (IN.)	STD. CTN.
B234ADJ	34.0	Adjustable Bracket	Adjusts 0"–1¾"	4 W x 3¾ H x 3 D	16
B234ADJC	34.0	Adjustable Bracket	Large 220V Knockout	5¾ W x 3¾ H x 3 D	16

Two-Gang Nail-On — For New Work



B232A-UPC



N2-1614-RNC



SN-236-V



SN-241



N2-1614-MNC



SN-236



SN-236-FS



SN-241-FS

Two-Gang Nail-On 32.0–41.0 Cu. In.

CAT. NO.	SIZE CU. IN.	MOUNTING MEANS	DESCRIPTION	DIMENSIONS (IN.)	STD. CTN.
B232A-UPC	32.0	Captive Nails	—	3¾ L x 4 W x 3 D	50
N2-1614-MNC	32.0	Angled Side Nails	¾" Offset Wallboard Tabs Cable-Lok™ Clamps Bulk Packed	4¼ L x 3¾ W x 2¼ D	50
N2-1614-RNC	32.0	Angled Side Nails	No Wallboard Tabs Cable-Lok™ Clamps Bulk Packed	4¼ L x 3¾ W x 2¼ D	50
SN-236	36.0	Compound Angled Nails	¾" Offset Wallboard Tabs Molded Fast Clamp	4 L x 3¾ W x 3½ D	50
SN-236-FS	36.0	Compound Angled Nails	¾" Offset Wallboard Tabs Molded Fast Clamp/Fast Set	4 L x 3¾ W x 3½ D	50
SN-236-V	36.0	Compound Angled Nails	¾" Offset Wallboard Tabs Molded V-Clamp	4 L x 3¾ W x 3½ D	50
SN-241	41.0	Compound Angled Nails	¾" Offset Wallboard Tabs Molded Fast Clamp	4 L x 3¾ W x 3¾ D	50
SN-241-FS	41.0	Compound Angled Nails	¾" Offset Wallboard Tabs Molded Fast Clamp/Fast Set	4 L x 3¾ W x 3¾ D	50

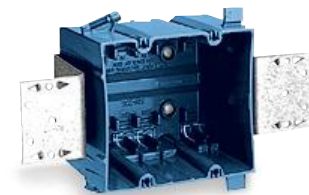
Two-Gang Bracket — For New Work

Two-Gang Bracket 32.0–36.0 Cu. In.

CAT. NO.	SIZE CU. IN.	MOUNTING MEANS	DESCRIPTION	DIMENSIONS (IN.)	STD. CTN.
B232B-UPC	32.0	Bracket for ¾" to ½" Wallboard — Steel or Wood Stud Mounting	—	3¾ L x 4 W x 3 D	50
SB2-236-FS	36.0	Two ¾" Offset Wallboard Tabs; Molded Fast Clamps/Fast Set	¾" Offset	3¾ L x 4 W x 3¾ D	20



B232B-UPC



SB2-236-FS

Carlton® Blue™ PVC Boxes

Three-Gang Adjustable — For New Work

- Design enables adjustment from 0" to 1¼" after installation
- Ideal for new work or retrofit upgrade applications
- Backless low-voltage bracket and floor box designs available
- Ideal for various drywall thicknesses and wall finishes

**Carlton
Exclusive**



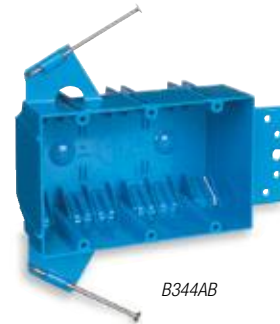
B349ADJ

Three-Gang Adjustable 49.0 Cu. In.



CAT. NO.	SIZE CU. IN.	MOUNTING MEANS	DESCRIPTION	DIMENSIONS (IN.)	STD. CTN.
B349ADJ	49.0	Adjustable Bracket	Adjusts 0"–1¼"	5 ¹⁹ / ₁₆ L x 3 ³ / ₈ W x 3 D	16

Three-Gang Nail-On — For New Work



B344AB

Three-Gang Nail-On 44.0–56.5 Cu. In.



CAT. NO.	SIZE CU. IN.	MOUNTING MEANS	DESCRIPTION	DIMENSIONS (IN.)	STD. CTN.
B344AB	44.0	Captive Nails and Bracket Support	—	5 ⁵ / ₈ L x 3 ³ / ₄ W x 2 ¹ / ₁₆ D	30
SN-357	56.5	Compound Angled Nails	¾" Offset Wallboard Tabs Molded Fast Clamps	5 ¹⁹ / ₁₆ L x 3 ³ / ₈ W x 3 ⁷ / ₁₆ D	20
SN-357-FS	56.5	Compound Angled Nails	¾" Offset Wallboard Tabs Molded Fast Clamps/Fast Set	5 ¹⁹ / ₁₆ L x 3 ³ / ₈ W x 3 ⁷ / ₁₆ D	20



SN-357-FS



SS-357

Three-Gang Bracket — For New Work

Three-Gang Bracket 56.5 Cu. In.



CAT. NO.	SIZE CU. IN.	MOUNTING MEANS	DESCRIPTION	DIMENSIONS (IN.)	STD. CTN.
SB-357	56.5	One ¾" Offset Bracket for Wood/Steel Studs	¾" Wallboard Tabs Molded Fast Clamps/Fast Set	3 ³ / ₈ L x 5 ¹⁹ / ₁₆ W x 3 ⁷ / ₁₆ D	30
SB2-357-FS	56.5	Two ¾" Offset Brackets for Wood/Steel Studs	¾" Wallboard Tabs Molded Fast Clamps/Fast Set	3 ³ / ₈ L x 5 ¹⁹ / ₁₆ W x 3 ⁷ / ₁₆ D	20



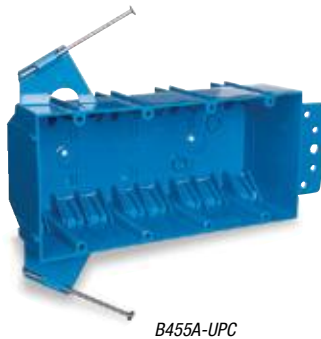
SB-357



SB2-357-FS

Carlton® Blue™ PVC Boxes

Four-Gang Nail-On — For New Work



B455A-UPC



B455AH



Four-Gang Nail-On 55 Cu. In.

CAT. NO.	SIZE CU. IN.	MOUNTING MEANS	DESCRIPTION	DIMENSIONS (IN.)	STD. CTN.
B455AH	55.0	Captive Nails, Bracket Support and Hanger Bar	—	7 $\frac{7}{8}$ L x 3 $\frac{3}{16}$ W x 2 $\frac{1}{2}$ D	25
B455A-UPC	55.0	Captive Nails and Bracket Support	—	7 $\frac{7}{8}$ L x 3 $\frac{3}{16}$ W x 2 $\frac{1}{2}$ D	25

4" Square — For New Work



B418A-UPC



4S-812C



B432A-UPC



4" Square 18.0–32.0 Cu. In.

CAT. NO.	SIZE CU. IN.	MOUNTING MEANS	DESCRIPTION	DIMENSIONS (IN.)	STD. CTN.
4S-812C	18.0	Angled Side Nails	—	1 $\frac{1}{16}$ D x 4 W x 4 L	100
B418A-UPC	18.0	Captive Nails	—	1 $\frac{5}{8}$ D x 4 W x 4 L	75
B432A-UPC	32.0	Captive Nails	—	2 $\frac{5}{8}$ D x 4 W x 4 L	50

Carlton® Blue™ PVC Boxes

One-Gang — For Old Work

Boxes & Covers — Carlton® Non-Metallic Boxes



B114R-UPC



B108R-UPC

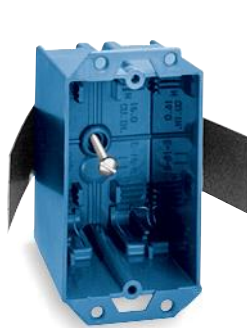


B117RSW

One-Gang 8.0–17.0 Cu. In.

CAT. NO.	SIZE CU. IN.	MOUNTING MEANS	DESCRIPTION	DIMENSIONS (IN.)	STD. CTN.
B108R-UPC •	8.0	Mounting Ears	—	3½ L x 2¼ W x 1¼ D	25
B114R-UPC •	14.0	Mounting Ears and Swing Clamps	—	4½ L x 2¼ W x 2¼ D	50
B117RSW •	17.0	Mounting Ears and Swing Clamps	Access Panel	3.64 L x 4.07 W x 2.00 D (2.20 opening)	30

• Not UL Classified for Fire Resistance.



E-16-8



E18-4



B120R

One-Gang 16.0–20.0 Cu. In.

CAT. NO.	SIZE CU. IN.	MOUNTING MEANS	DESCRIPTION	DIMENSIONS (IN.)	STD. CTN.
E-16-8	16.0	Thermoplastic Molded Ears #4 Snap-In	Molded Fast Clamps	3½ L x 2¼ W x 2¼ D	50
E-18-4	18.0	Thermoplastic Molded Ears #4 Swing Brackets	Integral Molded V-Clamp	3¾ L x 2¾ W x 2¼ D	100
B120R •	20.0	Mounting Ears and Swing Bracket	—	4½ L x 2¾ W x 3¾ D	50

• Not UL Classified for Fire Resistance.

Carlton® Blue™ PVC Boxes

Two-Gang — For Old Work

Two-Gang 25.0 Cu. In.

CAT. NO.	SIZE CU. IN.	MOUNTING MEANS	DESCRIPTION	DIMENSIONS (IN.)	STD. CTN.
B225R-UPC •	25.0	Mounting Ears and Two Swing Clamps	—	3 ¹⁵ / ₁₆ L x 3 ³ / ₈ W x 2 ³ / ₄ D	30

• Not UL Classified for Fire Resistance.



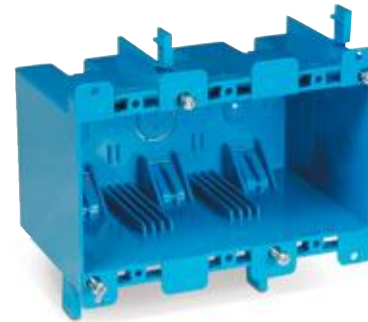
B225R-UPC

Three-Gang — For Old Work

Three-Gang 55.0 Cu. In.

CAT. NO.	SIZE CU. IN.	MOUNTING MEANS	DESCRIPTION	DIMENSIONS (IN.)	STD. CTN.
B355R •	55.0	Mounting Ears and Two Swing Clamps	—	5.72 L x 2.79 W x 3.69 D	6

• Not UL Classified for Fire Resistance.



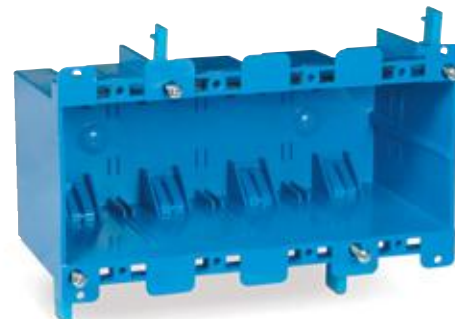
B355R

Four-Gang — For Old Work

Four-Gang 68.0 Cu. In.

CAT. NO.	SIZE CU. IN.	MOUNTING MEANS	DESCRIPTION	DIMENSIONS (IN.)	STD. CTN.
B468R •	68.0	Mounting Ears and Two Swing Clamps	—	7.57 L x 2.89 W x 3.56 D	6

• Not UL Classified for Fire Resistance.



B468R

Carlton® SuperBlue® Boxes

Carlton® SuperBlue® Boxes

Combine the features of the hard-shell thermoset box and the thermoplastic PVC-style box to create a “new” rigid non-metallic wiring box. Molded out of specially formulated thermoplastic material, Carlton® SuperBlue® boxes are so strong they won’t crack or break in extreme environments. So rigid that they resist flexing and hold their shape even in the most challenging applications. The boxes are designed to nest inside each other to take up less space on the shelf or in the truck, while still providing the largest wirefill capacity in their class.

- All PVC boxes are listed to UL514C
- All PVC boxes are listed for masonry walls
- All PVC boxes are UL® Classified for two-hour fire wall and/or fire ceiling
- All PVC boxes meet NEMA OS-2
- All PVC boxes are permissible for use with 90° C conductors
- UL File E11461 and R9140

One-Gang — For New Work

One-Gang 22.0 Cu. In.

CAT. NO.	SIZE CU. IN.	MOUNTING MEANS	DESCRIPTION	DIMENSIONS (IN.)	STD. CTN.
BH122A-UPC	22.0	Nails	One-Gang	3.55 L x 2.11 W x 3.63 D	100
BH122S	22.0	Screws	One-Gang	3.55 L x 2.11 W x 3.63 D	100



BH122A-UPC

Two-Gang — For New Work

Two-Gang 35.0 Cu. In.

CAT. NO.	SIZE CU. IN.	MOUNTING MEANS	DESCRIPTION	DIMENSIONS (IN.)	STD. CTN.
BH235A	35.0	Nails	Two-Gang	3.55 L x 2.11 W x 3.50 D	48
BH235S	35.0	Screws	Two-Gang	3.55 L x 2.11 W x 3.50 D	48



BH235A

Carlton® SuperBlue® Boxes

Three-Gang — For New Work

Three-Gang 53 Cu. In.

CAT. NO.	SIZE CU. IN.	MOUNTING MEANS	DESCRIPTION	DIMENSIONS (IN.)	STD. CTN.
BH353A	53.0	Nails	Three-Gang	3.53 L x 5.66 W x 3.50 D	24
BH353S	53.0	Screws	Three-Gang	3.53 L x 5.66 W x 3.50 D	24



BH353A

Four-Gang — For New Work

Four-Gang 64 Cu. In.

CAT. NO.	SIZE CU. IN.	MOUNTING MEANS	DESCRIPTION	DIMENSIONS (IN.)	STD. CTN.
BH464A	64.0	Nails	Four-Gang	3.53 L x 7.46 W x 3.18 D	36
BH464S	64.0	Screws	Four-Gang	3.53 L x 7.46 W x 3.18 D	36



BH464A

One-Gang — For Old Work

One-Gang 18.0 Cu. In.

CAT. NO.	SIZE CU. IN.	MOUNTING MEANS	DESCRIPTION	DIMENSIONS (IN.)	STD. CTN.
BH118R •	18.0	Mounting Ears & Swing Clamps	One-Gang	4.30 L x 2.56 W x 3.64 D	36

• Not UL Classified for Fire Resistance.



BH118R

Two-Gang — For Old Work

Two-Gang 34.0 Cu. In.

CAT. NO.	SIZE CU. IN.	MOUNTING MEANS	DESCRIPTION	DIMENSIONS (IN.)	STD. CTN.
BH234R •	34.0	Mounting Ears & Swing Clamps	Two-Gang	4.30 L x 4.36 W x 3.59 D	18

• Not UL Classified for Fire Resistance.



BH234R

Carlton® SuperBlue® Boxes

Ceiling Boxes

3/0-4/0 Combination 25.0 Cu. In.

CAT. NO.	SIZE CU. IN.	MOUNTING MEANS	DESCRIPTION	DIMENSIONS (IN.)	STD. CTN.
BH525A-UPC •	25.0	Nails	Ceiling Box	4 Dia. x 3.00 D	48
BH525P •	25.0	Nails and Grounding Lug	Ceiling Box	4 Dia. x 3.00 D	24

• Listed for fixture support up to 50 lbs.



BH525A-UPC

BH525P

Fan Box 25.0 Cu. In.

CAT. NO.	SIZE CU. IN.	MOUNTING MEANS	DESCRIPTION	DIMENSIONS (IN.)	STD. CTN.
BH525L •	25.0	Nails	Ceiling Fan Box	4 Dia. x 3.00 D	24
BH525LP •	25.0	Grounding Lug with Nails	Ceiling Fan Box	4 Dia. x 3.00 D	24

• Listed for fan support up to 35 lbs. and fixture support up to 50 lbs.



BH525L

Ceiling Box with Hanger Bar 25.0 Cu. In.

CAT. NO.	SIZE CU. IN.	MOUNTING MEANS	DESCRIPTION	DIMENSIONS (IN.)	STD. CTN.
BH525H •	25.0	Hanger Bar 11½"-18½"	Ceiling Box	4 Dia. x 2.95 D	20
BH525HP •	25.0	Hanger Bar 11½"-18½", Grounding Lug	Ceiling Box	4 Dia. x 2.95 D	20

• Listed for fixture support up to 50 lbs.



BH525H

3½" 14.5 Cu. In.

CAT. NO.	SIZE CU. IN.	MOUNTING MEANS	DESCRIPTION	DIMENSIONS (IN.)	STD. CTN.
BH614R • †	14.5	Base, Ears & Snap-In Bracket	Round Old/New Work Box	3½ Dia.	24
BH614RP • †	14.5	Base, Ears & Snap-In Bracket	Round Old/New Work Box w/ Ground Lug	3½ Dia.	24

• Listed for wall fixture support up to 10 lbs.

† Tighten screws to 10 in.-lbs.



BH614R

Boxes & Covers — Carlton® Non-Metallic Boxes