

# Ariadni 250 W C•L Dimmer

**Dimmer for CFL, LED, Halogen, and Incandescent dimmable bulbs.**

### Features

- On/off toggle switch with a captive linear-slide dimmer for a traditional wallplate opening
- HED Technology: Advanced Lutron dimming circuitry designed for compatibility with most high efficacy light bulbs
- UL<sup>®</sup> Listed to control:
  - Dimmable compact fluorescent load (CFL) with integrated ballast
  - Dimmable LED with integrated driver
  - Lutron Hi-lume A-Series LTE LED Driver
  - Halogen
  - Incandescent
- Low-end adjustment to accommodate a wide range of bulbs
- 100% factory tested
- NEMA SSL-7A Type 2 Compliant

### Application Requirements

- **When dimming CFLs or LEDs, only bulbs marked or rated as DIMMABLE may be used.**
- For a list of compatible DIMMABLE CFLs and LEDs please visit [www.lutron.com/dimcflled](http://www.lutron.com/dimcflled). For questions call 1.844.LUTRON1.
- Some DIMMABLE CFLs and LEDs require a minimum number of bulbs for proper operation. For details and a list of bulbs, please visit [www.lutron.com/dimcflled](http://www.lutron.com/dimcflled).

### Model Numbers

AYCL-253P-XX<sup>1, 2</sup> Single pole/3-way<sup>3</sup>  
 AYCL-253PH-WH-C<sup>4</sup> Single pole/3-way<sup>3</sup>

<sup>1</sup> "XX" in the model number represents color/finish code; see "Colors and Finishes" chart on Page 3.  
<sup>2</sup> For clamshell packaging, add "H" after "253P". Clamshell packaged product available in IV, LA, and WH.  
<sup>3</sup> For 3-way and 4-way switching, use mechanical switches.  
<sup>4</sup> Clamshell packaged product for Canada. Available in WH only.



\* Wallplate sold separately

<b>Job Name:</b>	<b>Model Numbers:</b>
<b>Job Number:</b>	

## Specifications

### Regulatory Approvals

- UL® Listed to US and Canadian safety requirements  
UL1472 / CSA C22.2 184.1
- NEMA SSL-7A Type 2

### Power and Ratings

- 120 V~ 60 Hz
- 250 W dimmable CFL/LED
- or**
- 600 W Incandescent/Halogen
- or**
- Mixed bulb type per **Multigang and Mixed Bulb Type Ratings** table
- or**
- 350 W Lutron Hi-lume A-Series LTE LED Driver (maximum 8 drivers)

### Environment

- For indoor use only.
- Ambient operating temperature: 32 °F to 104 °F (0 °C to 40 °C), 0% - 90% humidity

### Performance

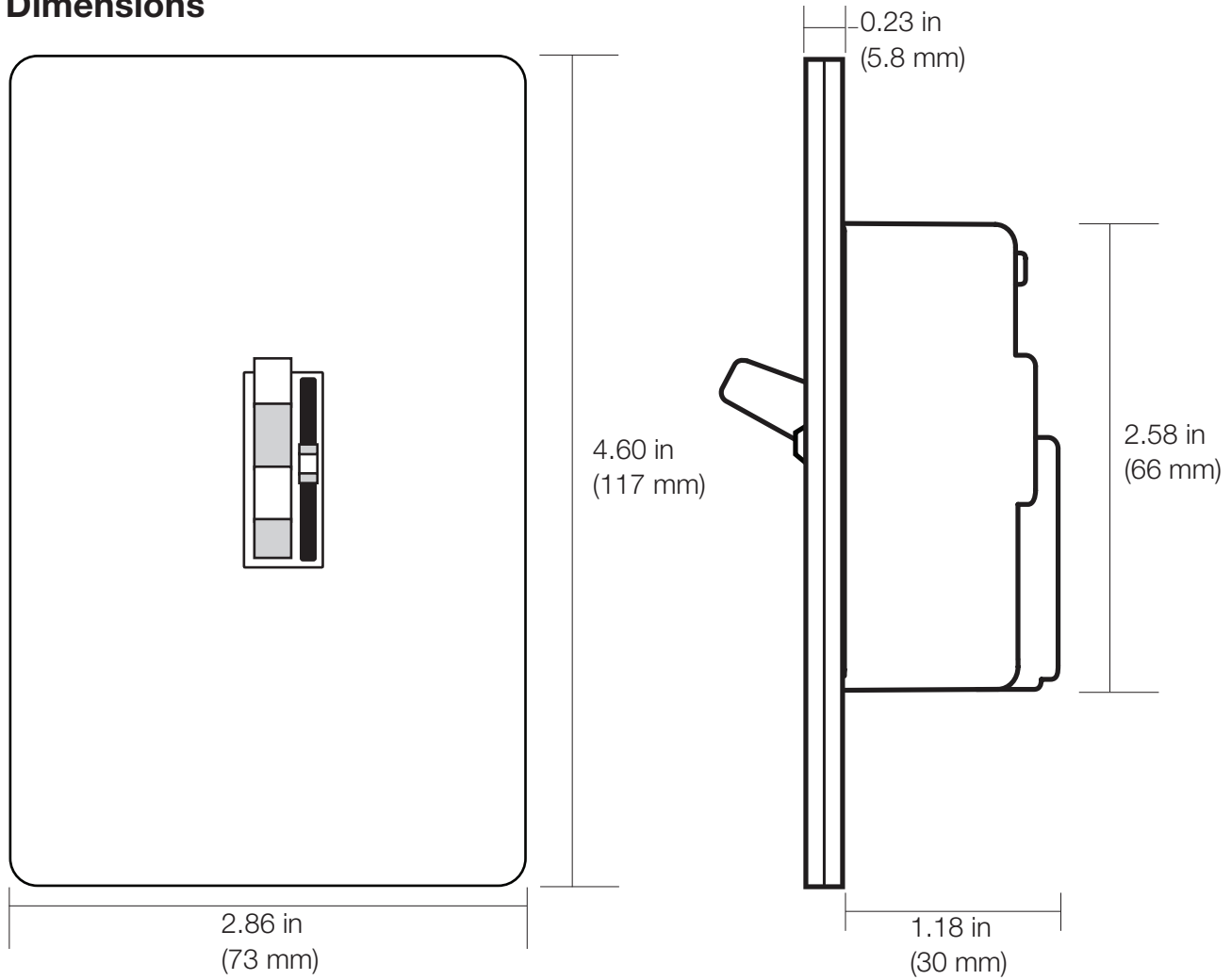
- Power failure memory: should power be interrupted, the control will return to its previously set level prior to the interruption when power is restored.
- Tested to withstand electrostatic discharge without damage or memory loss, in accordance with IEC 61000-4-2.
- Precise color matching
- Mechanical air-gap switch to disconnect load power

### Warranty

- 1 Year Limited Warranty  
For additional Warranty information, please visit [www.lutron.com/TechnicalDocumentLibrary/369-119\\_Wallbox\\_Warranty.pdf](http://www.lutron.com/TechnicalDocumentLibrary/369-119_Wallbox_Warranty.pdf)

<p><b>Job Name:</b></p> <p><b>Job Number:</b></p>	<p><b>Model Numbers:</b></p>
--	------------------------------

### Dimensions



### Colors and Finishes

#### Gloss Finishes

Add color/finish code to model #

**Example: AYCL-253P-WH**

- WH White
- IV Ivory
- AL Almond
- LA Light Almond
- BR Brown
- BL Black

Job Name:	Model Numbers:
Job Number:	

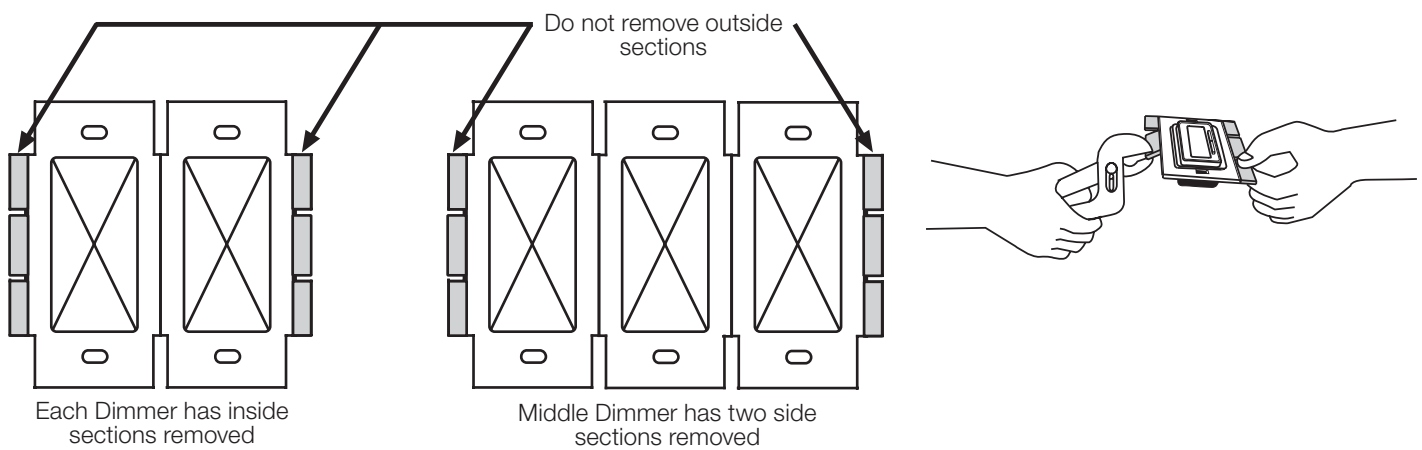
### Multigang and Mixed-Bulb-Type Ratings



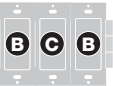
When installing more than one Dimmer in the same wallbox, it may be necessary to remove some side sections prior to wiring (**see diagram**). Removal of Dimmer side sections may reduce maximum wattage, as shown in the chart below.

Mixing bulb types (**using a combination of CFL/LED, and Incandescent/Halogen bulbs**) will also affect the maximum ratings, as shown in the chart below.

**Note:** Lutron Hi-lume A-Series LTE LED loads cannot be mixed with other loads.

\*EXAMPLE: If one set of side sections is removed and you have eight 9 W LED bulbs installed (Total LED Wattage = 72 W), you may add up to 300 W of incandescent or halogen lighting.

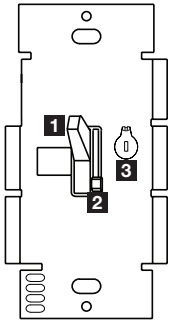


Total CFL/LED Wattage Installed (Wattage per bulb x # of bulbs)	Maximum Allowable Incandescent/Halogen Wattage		
	  		
	<b>A</b> No sides removed	<b>B</b> 1 side removed	<b>C</b> 2 sides removed
0 W	+ 600 W	500 W	400 W
1 W – 40 W	+ 500 W	400 W	300 W
41 W – 80 W	+ 400 W	300 W	200 W
81 W – 120 W	+ 300 W	200 W	100 W
121 W – 160 W	+ 200 W	100 W	50 W
161 W – 200 W	+ 100 W	50 W	0 W
201 W – 250 W	+ 0 W	0 W	0 W

**Note:** There is no wattage reduction when controlling only LED or CFL

Job Name:	Model Numbers:
Job Number:	

# Operation (View with wallplate removed)



**1 Switch**  
Turns lights ON and OFF.

**2 Slider**  
Controls light level.

+ ↑ **Up**  
Increases light level

- ↓ **Down**  
Decreases light level

**IMPORTANT: Set slider to bottom before adjusting dimming range.**

## Lever-type Adjustment Dial

**3 Adjustment lever**  
Sets low end dimming limit.

**Right (clockwise)**  
Increases brightness



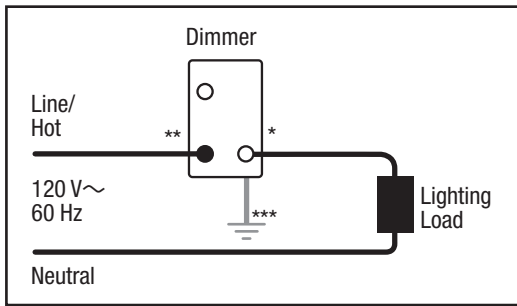
**Left (counter-clockwise)**  
Decreases brightness

Lutron, Lutron, Ariadni, C•L, and Hi-lume are trademarks of Lutron Electronics Co., Inc., registered in the U.S. and other countries. HED is a trademark of Lutron Electronics Co., Inc.

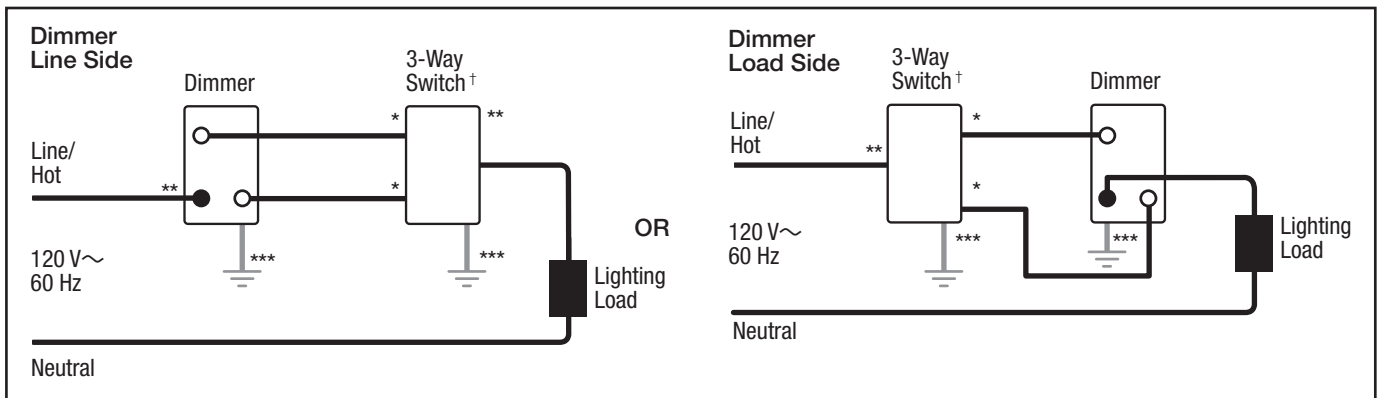
Job Name:	Model Numbers:
Job Number:	

# Wiring Diagrams

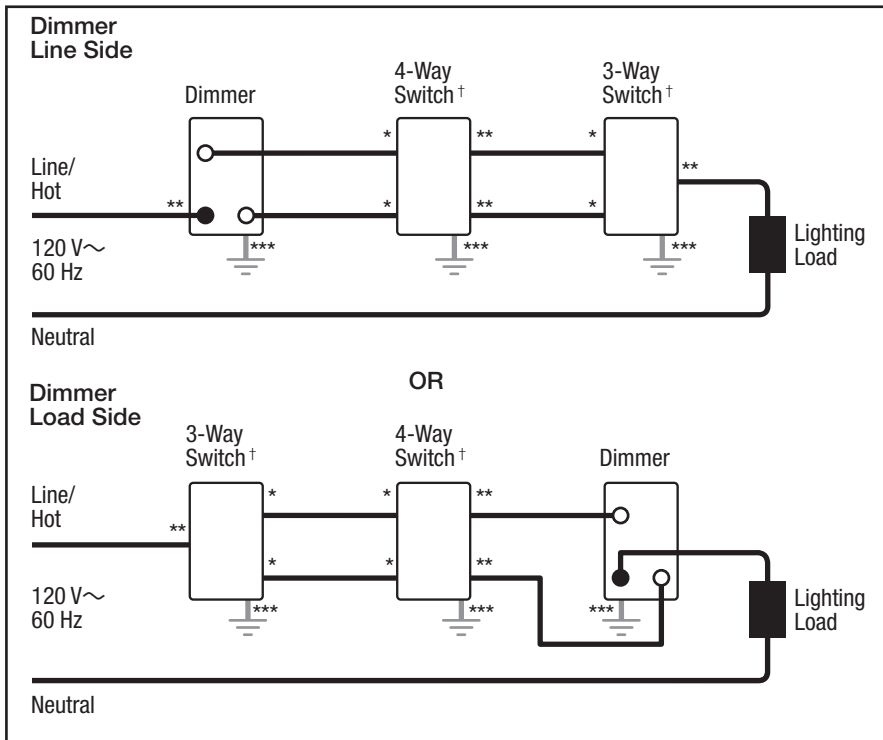
## Single-Pole Wiring



## 3-Way Wiring



## 4-Way Wiring



- \* Brass/Gold screw terminal
- \*\* Copper/Black screw terminal
- \*\*\* Green screw terminal
- † Please refer to switch instruction sheet for proper wiring.

**Note for 4-Way Wiring:**  
 Dimmer must be installed Line Side or Load Side. It cannot be installed in the 4-way location.

Job Name:	Model Numbers:
Job Number:	

# Ariadni 250 W C•L Dimmer

**Dimmer for CFL, LED, Halogen, and Incandescent dimmable bulbs.**

### Features

- On/off toggle switch with a captive linear-slide dimmer for a traditional wallplate opening
- HED Technology: Advanced Lutron dimming circuitry designed for compatibility with most high efficacy light bulbs
- UL<sup>®</sup> Listed to control:
  - Dimmable compact fluorescent load (CFL) with integrated ballast
  - Dimmable LED with integrated driver
  - Lutron Hi-lume A-Series LTE LED Driver
  - Halogen
  - Incandescent
- Low-end adjustment to accommodate a wide range of bulbs
- 100% factory tested
- NEMA SSL-7A Type 2 Compliant

### Application Requirements

- **When dimming CFLs or LEDs, only bulbs marked or rated as DIMMABLE may be used.**
- For a list of compatible DIMMABLE CFLs and LEDs please visit [www.lutron.com/dimcflled](http://www.lutron.com/dimcflled). For questions call 1.844.LUTRON1.
- Some DIMMABLE CFLs and LEDs require a minimum number of bulbs for proper operation. For details and a list of bulbs, please visit [www.lutron.com/dimcflled](http://www.lutron.com/dimcflled).

### Model Numbers

AYCL-253P-XX<sup>1, 2</sup> Single pole/3-way<sup>3</sup>  
 AYCL-253PH-WH-C<sup>4</sup> Single pole/3-way<sup>3</sup>

<sup>1</sup> "XX" in the model number represents color/finish code; see "Colors and Finishes" chart on Page 3.  
<sup>2</sup> For clamshell packaging, add "H" after "253P". Clamshell packaged product available in IV, LA, and WH.  
<sup>3</sup> For 3-way and 4-way switching, use mechanical switches.  
<sup>4</sup> Clamshell packaged product for Canada. Available in WH only.



\* Wallplate sold separately

<b>Job Name:</b>	<b>Model Numbers:</b>
<b>Job Number:</b>	

## Specifications

### Regulatory Approvals

- UL® Listed to US and Canadian safety requirements  
UL1472 / CSA C22.2 184.1
- NEMA SSL-7A Type 2

### Power and Ratings

- 120 V~ 60 Hz
- 250 W dimmable CFL/LED
- or**
- 600 W Incandescent/Halogen
- or**
- Mixed bulb type per **Multigang and Mixed Bulb Type Ratings** table
- or**
- 350 W Lutron Hi-lume A-Series LTE LED Driver (maximum 8 drivers)

### Environment

- For indoor use only.
- Ambient operating temperature: 32 °F to 104 °F (0 °C to 40 °C), 0% - 90% humidity

### Performance

- Power failure memory: should power be interrupted, the control will return to its previously set level prior to the interruption when power is restored.
- Tested to withstand electrostatic discharge without damage or memory loss, in accordance with IEC 61000-4-2.
- Precise color matching
- Mechanical air-gap switch to disconnect load power

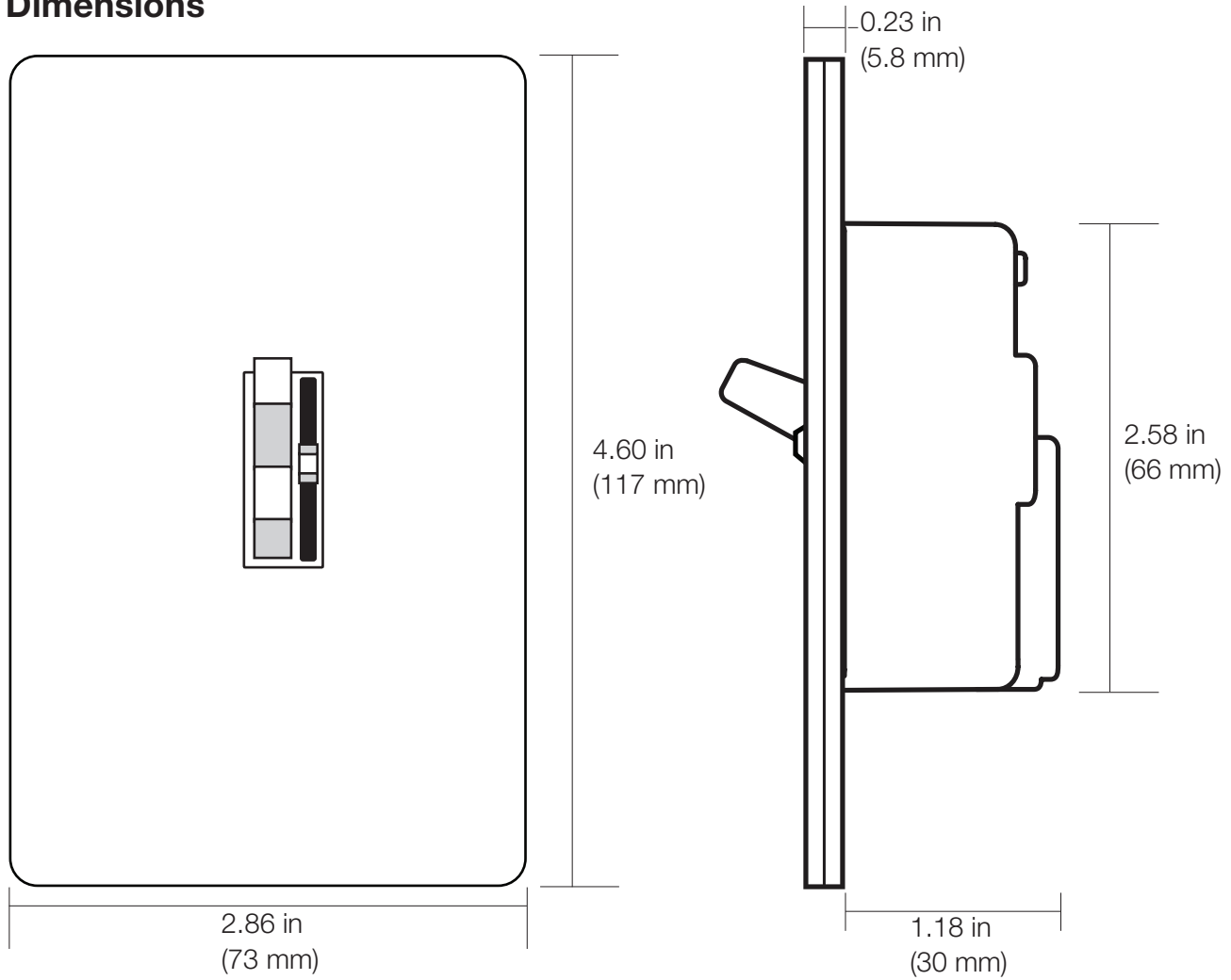
### Warranty

- 1 Year Limited Warranty
- For additional Warranty information, please visit [www.lutron.com/TechnicalDocumentLibrary/369-119\\_Wallbox\\_Warranty.pdf](http://www.lutron.com/TechnicalDocumentLibrary/369-119_Wallbox_Warranty.pdf)

<p>Job Name:</p>  <p>Job Number:</p>	<p>Model Numbers:</p>
--	-----------------------



### Dimensions



### Colors and Finishes

#### Gloss Finishes

Add color/finish code to model #

**Example: AYCL-253P-WH**

- WH White
- IV Ivory
- AL Almond
- LA Light Almond
- BR Brown
- BL Black

Job Name:	Model Numbers:
Job Number:	

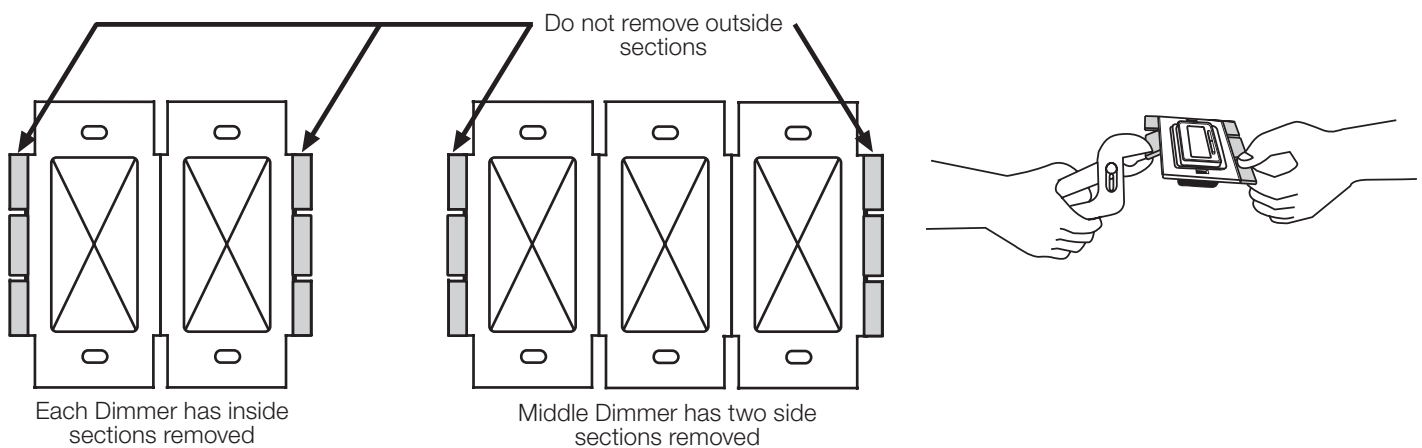
## Multigang and Mixed-Bulb-Type Ratings



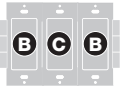
When installing more than one Dimmer in the same wallbox, it may be necessary to remove some side sections prior to wiring (**see diagram**). Removal of Dimmer side sections may reduce maximum wattage, as shown in the chart below.

Mixing bulb types (**using a combination of CFL/LED, and Incandescent/Halogen bulbs**) will also affect the maximum ratings, as shown in the chart below.

**Note:** Lutron Hi-lume A-Series LTE LED loads cannot be mixed with other loads.

\*EXAMPLE: If one set of side sections is removed and you have eight 9 W LED bulbs installed (Total LED Wattage = 72 W), you may add up to 300 W of incandescent or halogen lighting.

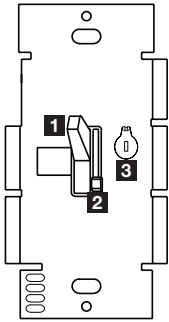


Total CFL/LED Wattage Installed (Wattage per bulb x # of bulbs)	Maximum Allowable Incandescent/Halogen Wattage		
	  		
	<b>A</b> No sides removed	<b>B</b> 1 side removed	<b>C</b> 2 sides removed
0 W	+ 600 W	500 W	400 W
1 W – 40 W	+ 500 W	400 W	300 W
41 W – 80 W	+ 400 W	300 W	200 W
81 W – 120 W	+ 300 W	200 W	100 W
121 W – 160 W	+ 200 W	100 W	50 W
161 W – 200 W	+ 100 W	50 W	0 W
201 W – 250 W	+ 0 W	0 W	0 W

**Note:** There is no wattage reduction when controlling only LED or CFL

Job Name:	Model Numbers:
Job Number:	

# Operation (View with wallplate removed)



**1 Switch**  
Turns lights ON and OFF.

**2 Slider**  
Controls light level.

+ ↑ **Up**  
Increases light level

- ↓ **Down**  
Decreases light level

**IMPORTANT: Set slider to bottom before adjusting dimming range.**

## Lever-type Adjustment Dial

**3 Adjustment lever**  
Sets low end dimming limit.

**Right (clockwise)**  
Increases brightness



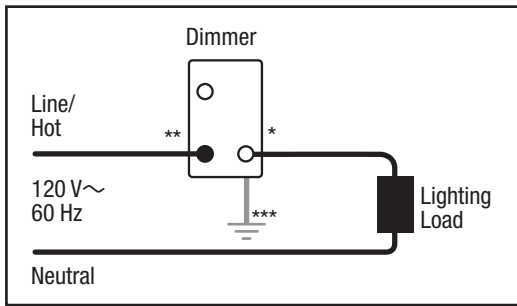
**Left (counter-clockwise)**  
Decreases brightness

Lutron, Lutron, Ariadni, C•L, and Hi-lume are trademarks of Lutron Electronics Co., Inc., registered in the U.S. and other countries. HED is a trademark of Lutron Electronics Co., Inc.

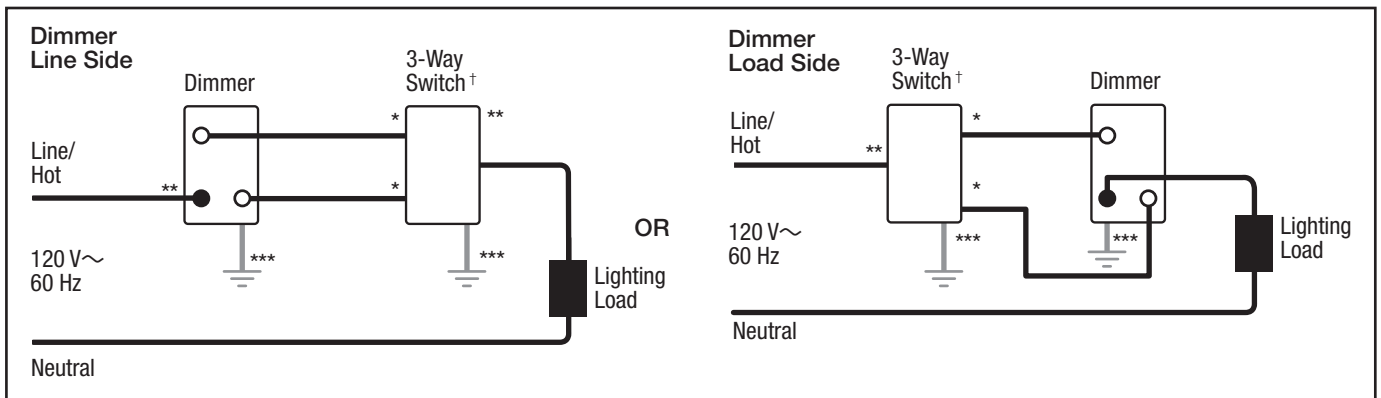
<p>Job Name:</p>  <p>Job Number:</p>	<p>Model Numbers:</p>
--	-----------------------

# Wiring Diagrams

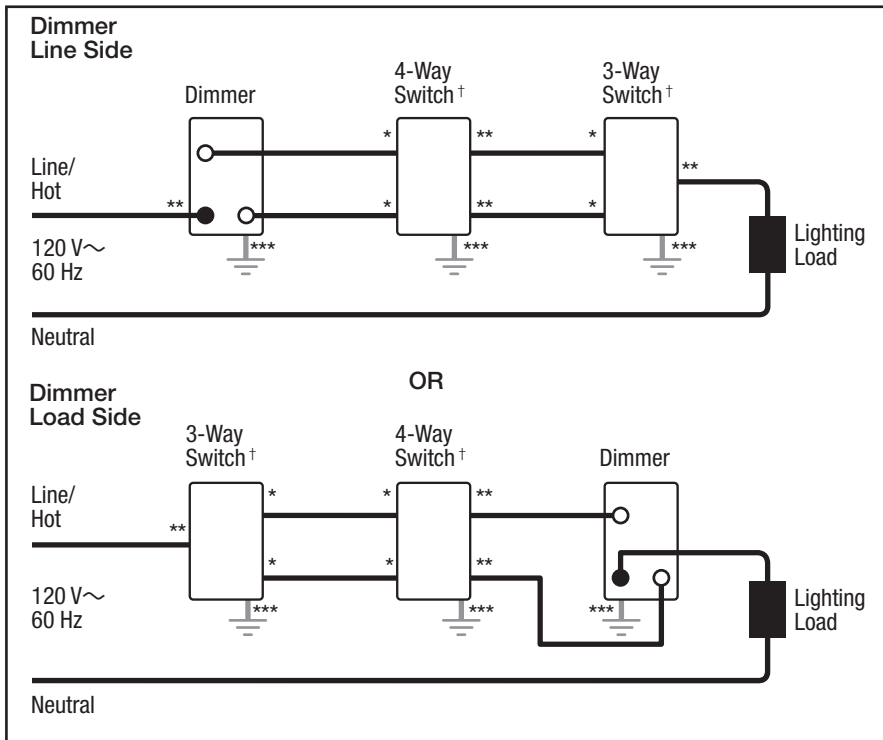
## Single-Pole Wiring



## 3-Way Wiring



## 4-Way Wiring



- \* Brass/Gold screw terminal
- \*\* Copper/Black screw terminal
- \*\*\* Green screw terminal
- † Please refer to switch instruction sheet for proper wiring.

**Note for 4-Way Wiring:**  
Dimmer must be installed Line Side or Load Side. It cannot be installed in the 4-way location.

Job Name:	Model Numbers:
Job Number:	