

Dual-Rated Mechanical Connectors

Type ASR — ALCÜL™ Splicer Reducer with Solid Barrier Wire Stop



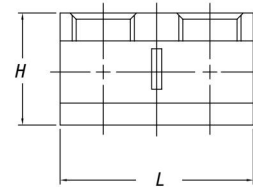
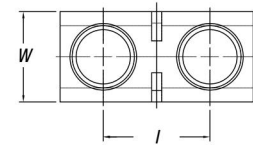
T&B CAT. NO.	CONDUCTOR RANGE (AL OR CU)		DIMENSIONS (IN.)				SCREWS
	MAX.	MIN.	L	W	H	I	
ASR0214*	#2	#14	.95	.45	.56	.53	2
ASR1114*	1/0	#14	1.31	.54	.60	.68	2
ASR2506	250	#6	2.18	.81	1.00	1.12	2
ASR3506	350	#6	2.56	1.12	1.29	1.48	2
ASR7525**	750	250	6.00	1.53	1.95	1.93	4

* Slotted screws

** Two set screws per end. Not CSA Certified.

UL 486B

AL9CU

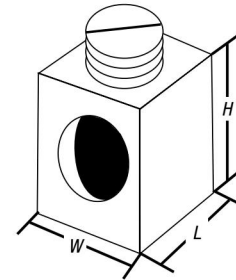


Type BX — ALCÜL™ Rectangular Connectors

- Features anti-rotational boss
- UL486B Recognized (90° C rating)



CAT. NO.	CONDUCTOR RANGE		STYLE & SIZE OF BOSS	BOSS HOLE TAPPED	DIMENSIONS (IN.)		
	MAX.	MIN.			L	W	H
BX0214	2	14 CU 12 AL	Square .229 in.	10-32	15/32	15/32	9/16
BX1114	14 CU 1/0	Square 12 AL	.229 in.	10-32	5/8	17/32	39/64

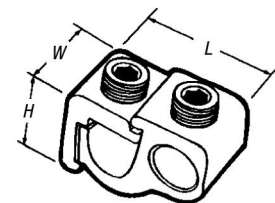


Type GP — Aluminum Dual-Rated Mechanical Parallel Tap Connectors

CAT. NO.	CONDUCTOR RANGE (AL OR CU)		DIMENSIONS (IN.)			
	MAIN	TAP	W	L	H	
GP-2*	2-12 Str.	4-14	5/8	1 1/8	7/8	
GP-0	1/0-2	1/0-14	3/4	1 1/4	1	
GP-250-0	250-1/0	1/0-14	1 1/16	2 1/32	1 1/16	
GP-250	250-1/0	250-6	1 1/16	2 3/32	1 1/16	
GP-350	350-4/0	350-6	1 1/4	2 1/16	1 1/16	
GP-500	500-350	500-2	1 3/8	3 1/8	1 3/4	
GP-750	750-500	500-2	1 1/2	3 3/8	2	

* Slotted screw, tap side.

To include insulating cover, add suffix WC.



Dual-Rated Mechanical Connectors

Type ASR — ALCÜL™ Splicer Reducer with Solid Barrier Wire Stop



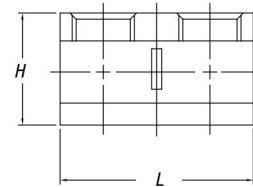
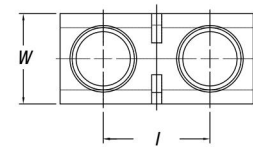
T&B CAT. NO.	CONDUCTOR RANGE (AL OR CU)		DIMENSIONS (IN.)				SCREWS
	MAX.	MIN.	L	W	H	I	
ASR0214*	#2	#14	.95	.45	.56	.53	2
ASR1114*	1/0	#14	1.31	.54	.60	.68	2
ASR2506	250	#6	2.18	.81	1.00	1.12	2
ASR3506	350	#6	2.56	1.12	1.29	1.48	2
ASR7525**	750	250	6.00	1.53	1.95	1.93	4

* Slotted screws

** Two set screws per end. Not CSA Certified.

UL 486B

AL9CU

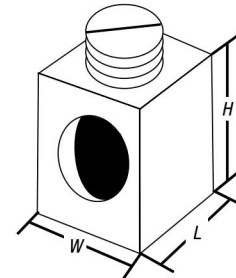


Type BX — ALCÜL™ Rectangular Connectors

- Features anti-rotational boss
- UL486B Recognized (90° C rating)



CAT. NO.	CONDUCTOR RANGE		STYLE & SIZE OF BOSS	BOSS HOLE TAPPED	DIMENSIONS (IN.)		
	MAX.	MIN.			L	W	H
BX0214	2	14 CU 12 AL	Square .229 in.	10-32	15/32	15/32	9/16
BX1114	14 CU 1/0	Square 12 AL	.229 in.	10-32	5/8	17/32	39/64



Type GP — Aluminum Dual-Rated Mechanical Parallel Tap Connectors

CAT. NO.	CONDUCTOR RANGE (AL OR CU)		DIMENSIONS (IN.)			
	MAIN	TAP	W	L	H	
GP-2*	2-12 Str.	4-14	5/8	1 1/8	7/8	
GP-0	1/0-2	1/0-14	3/4	1 1/4	1	
GP-250-0	250-1/0	1/0-14	1 1/16	2 1/32	1 1/16	
GP-250	250-1/0	250-6	1 1/16	2 3/32	1 1/16	
GP-350	350-4/0	350-6	1 1/4	2 1/16	1 1/16	
GP-500	500-350	500-2	1 3/8	3 1/8	1 3/4	
GP-750	750-500	500-2	1 1/2	3 3/8	2	

* Slotted screw, tap side.

To include insulating cover, add suffix WC.

