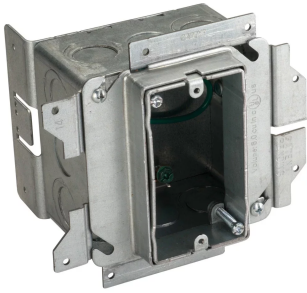




NVENT CADDY ALL-IN-ONE STUD-MOUNTED WITH ADJUSTABLE MUD RING, 1 GANG, 3/4"–1 1/2" DRYWALL, 3 5/8"

CATALOG NUMBER

A1SFV1G



CERTIFICATIONS



FEATURES

- Adjustable mud ring accommodates various thicknesses of drywall
- Can be adjusted after the installation of drywall
- Box remains fixed in place when mud ring is removed
- Includes multiple knockouts on each side of the box
- Assemblies keyed for precise alignment when installed on both sides of a stud

PRODUCT ATTRIBUTES

- Material: Steel
- Finish: Pregalvanized
- Knockout Sizes: (8) 1/2", 3/4";(3) 1/2"
- Gang: 1
- Ground Wire Included: Yes

Back Plate Pre-assembled: Yes

Box Volume: 32.8in³

Drywall Thickness: 3/4" - 1 1/2"

Depth (D): 3 5/8"

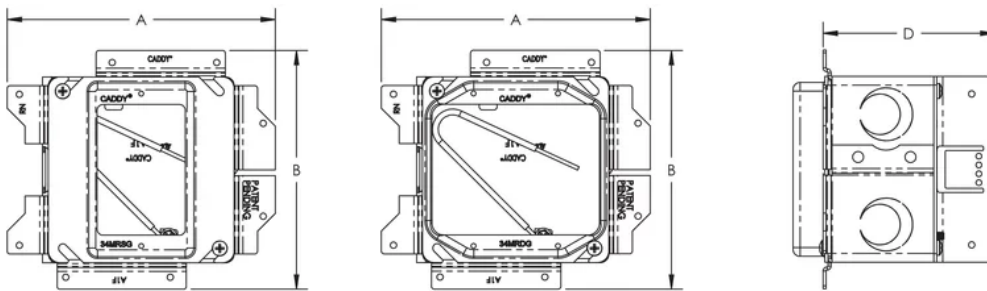
A: 5 3/4"

B: 5 1/8"

ADDITIONAL PRODUCT DETAILS

Ground wire pigtail is 10".

DIAGRAMS



WARNING

nVent products shall be installed and used only as indicated in nVent's product instruction sheets and training materials. Instruction sheets are available at www.nvent.com and from your nVent customer service representative. Improper installation, misuse, misapplication or other failure to completely follow nVent's instructions and warnings may cause product malfunction, property damage, serious bodily injury and death and/or void your warranty.

North America

+1.800.753.9221

Option 1 – Customer Care

Option 2 – Technical Support

Europe

Netherlands:

+31 800-0200135

France:

+33 800 901 793

Europe

Germany:

800 1890272

Other Countries:

+31 13 5835404

APAC

Shanghai:

+ 86 21 2412 1618/19

Sydney:

+61 2 9751 8500



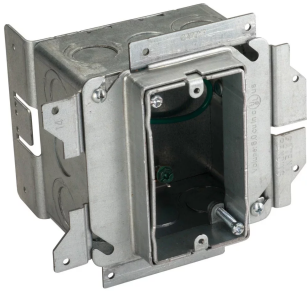
Our powerful portfolio of brands:
nVent.com **CADDY ERICO HOFFMAN RAYCHEM SCHROFF**
TRACER



NVENT CADDY ALL-IN-ONE STUD-MOUNTED WITH ADJUSTABLE MUD RING, 1 GANG, 3/4"–1 1/2" DRYWALL, 3 5/8"

CATALOG NUMBER

A1SFV1G



CERTIFICATIONS



FEATURES

- Adjustable mud ring accommodates various thicknesses of drywall
- Can be adjusted after the installation of drywall
- Box remains fixed in place when mud ring is removed
- Includes multiple knockouts on each side of the box
- Assemblies keyed for precise alignment when installed on both sides of a stud

PRODUCT ATTRIBUTES

- Material: Steel
- Finish: Pregalvanized
- Knockout Sizes: (8) 1/2", 3/4";(3) 1/2"
- Gang: 1
- Ground Wire Included: Yes

Back Plate Pre-assembled: Yes

Box Volume: 32.8in³

Drywall Thickness: 3/4" - 1 1/2"

Depth (D): 3 5/8"

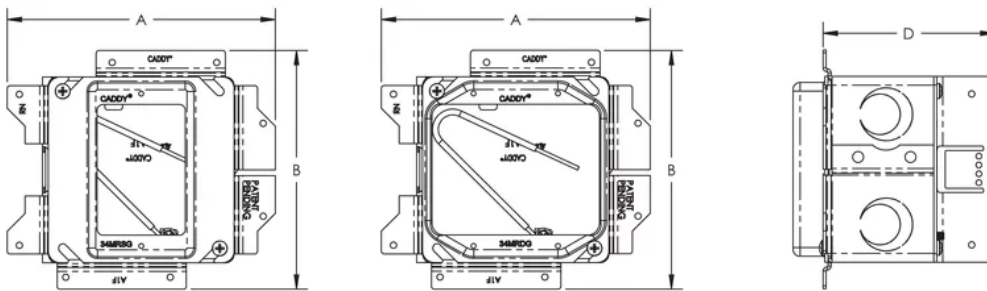
A: 5 3/4"

B: 5 1/8"

ADDITIONAL PRODUCT DETAILS

Ground wire pigtail is 10".

DIAGRAMS



WARNING

nVent products shall be installed and used only as indicated in nVent's product instruction sheets and training materials. Instruction sheets are available at www.nvent.com and from your nVent customer service representative. Improper installation, misuse, misapplication or other failure to completely follow nVent's instructions and warnings may cause product malfunction, property damage, serious bodily injury and death and/or void your warranty.

North America

+1.800.753.9221

Option 1 – Customer Care

Option 2 – Technical Support

Europe

Netherlands:

+31 800-0200135

France:

+33 800 901 793

Europe

Germany:

800 1890272

Other Countries:

+31 13 5835404

APAC

Shanghai:

+ 86 21 2412 1618/19

Sydney:

+61 2 9751 8500



Our powerful portfolio of brands:
nVent.com **CADDY ERICO HOFFMAN RAYCHEM SCHROFF**
TRACER

© 2025 nVent. All nVent marks and logos are owned or licensed by nVent Services GmbH or its affiliates. All other trademarks are the property of their respective owners.

nVent reserves the right to change specifications without notice.