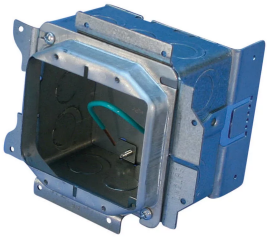




# NVENT CADDY ALL-IN-ONE STUD-MOUNTED WITH REMOVABLE MUD RING, 2 GANG, W/GROUND, 5/8" DRYWALL, 3 5/8"

## CATALOG NUMBER

**A1SF2G**



## CERTIFICATIONS



## FEATURES

- Removable mud ring provides front access to the interior of the box
- Box remains fixed in place when mud ring is removed
- Includes multiple knockouts on each side of the box
- Assemblies keyed for precise alignment when installed on both sides of a stud

## PRODUCT ATTRIBUTES

- Material: Steel
- Finish: Pregalvanized
- Knockout Sizes: (8) 1/2", 3/4"
- Gang: 2
- Ground Wire Included: Yes
- Back Plate Pre-assembled: Yes

Box Volume: 32.8in<sup>3</sup>

Drywall Thickness: 5/8"

Depth (D): 3 5/8"

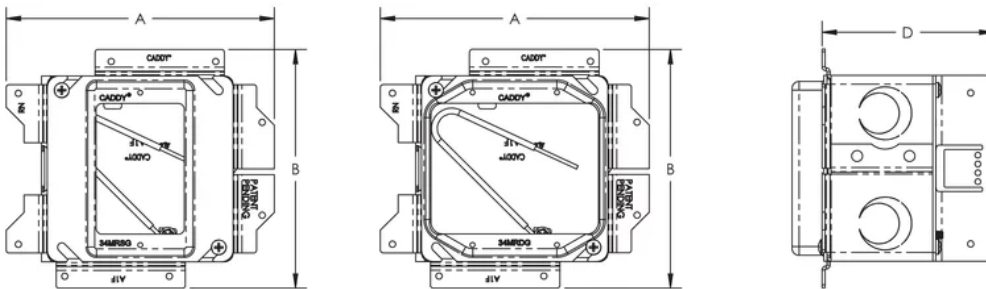
A: 5 3/4"

B: 5 1/8"

## ADDITIONAL PRODUCT DETAILS

Ground wire pigtail is 10".

## DIAGRAMS



## WARNING

nVent products shall be installed and used only as indicated in nVent's product instruction sheets and training materials. Instruction sheets are available at [www.nvent.com](http://www.nvent.com) and from your nVent customer service representative. Improper installation, misuse, misapplication or other failure to completely follow nVent's instructions and warnings may cause product malfunction, property damage, serious bodily injury and death and/or void your warranty.

### North America

+1.800.753.9221

Option 1 – Customer Care

Option 2 – Technical Support

### Europe

Netherlands:

+31 800-0200135

France:

+33 800 901 793

### Europe

Germany:

800 1890272

Other Countries:

+31 13 5835404

### APAC

Shanghai:

+ 86 21 2412 1618/19

Sydney:

+61 2 9751 8500



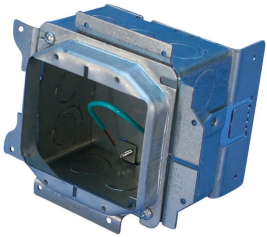
Our powerful portfolio of brands:  
nVent.com **CADDY ERICO HOFFMAN RAYCHEM SCHROFF**  
**TRACER**



# NVENT CADDY ALL-IN-ONE STUD-MOUNTED WITH REMOVABLE MUD RING, 2 GANG, W/GROUND, 5/8" DRYWALL, 3 5/8"

## CATALOG NUMBER

**A1SF2G**



## CERTIFICATIONS



## FEATURES

Removable mud ring provides front access to the interior of the box

Box remains fixed in place when mud ring is removed

Includes multiple knockouts on each side of the box

Assemblies keyed for precise alignment when installed on both sides of a stud

## PRODUCT ATTRIBUTES

Material: Steel

Finish: Pregalvanized

Knockout Sizes: (8) 1/2", 3/4"

Gang: 2

Ground Wire Included: Yes

Back Plate Pre-assembled: Yes

Box Volume: 32.8in<sup>3</sup>

Drywall Thickness: 5/8"

Depth (D): 3 5/8"

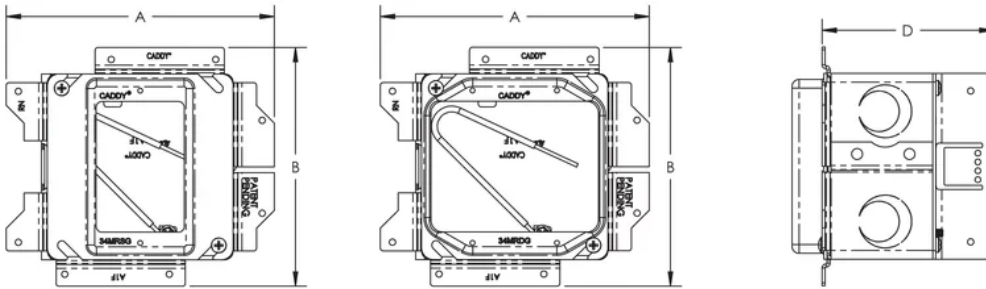
A: 5 3/4"

B: 5 1/8"

## ADDITIONAL PRODUCT DETAILS

Ground wire pigtail is 10".

## DIAGRAMS



## WARNING

nVent products shall be installed and used only as indicated in nVent's product instruction sheets and training materials. Instruction sheets are available at [www.nvent.com](http://www.nvent.com) and from your nVent customer service representative. Improper installation, misuse, misapplication or other failure to completely follow nVent's instructions and warnings may cause product malfunction, property damage, serious bodily injury and death and/or void your warranty.

### North America

+1.800.753.9221

Option 1 – Customer Care

Option 2 – Technical Support

### Europe

Netherlands:

+31 800-0200135

France:

+33 800 901 793

### Europe

Germany:

800 1890272

Other Countries:

+31 13 5835404

### APAC

Shanghai:

+ 86 21 2412 1618/19

Sydney:

+61 2 9751 8500



Our powerful portfolio of brands:  
nVent.com **CADDY ERICO HOFFMAN RAYCHEM SCHROFF**  
**TRACER**