

## E26 6" Trim Series

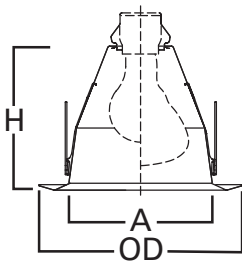
### DESCRIPTION

Full cone reflector trim with self-flange in the 6" trim family for use in recessed downlighting. Compatible for use in Halo and other housings.

Catalog #		Type
Project		
Comments		Date
Prepared by		

### SPECIFICATION FEATURES

- Full cone reflector for BR30, BR40, A19 and PAR30 and PAR38 lamps
- Torsion spring retention
- Socket supporting reflector
- Self-flanged trim ring sized to hide gaps caused by construction tolerances
- Makes installation Air-Tite, with any compatible housing

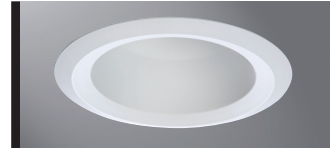


#### Dimensions:

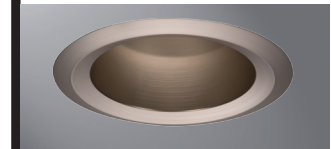
A: 5-7/16" [138mm]  
 H: 5-3/8" [138mm]  
 OD: 7-3/4" [197mm]

Housings	Max Lamp Compatibility
H7ICT H7RICT	<b>6120WH:</b> 43W A19, 75W PAR30S, 75W PAR30L, 65W PAR38, 65W BR30, 70W BR40
H7ICAT H7RICAT	<b>6120SN, 6120TBZ:</b> 43W A19, 60W PAR30S, 75W PAR30L, 65W PAR38, 65W BR30, 70W BR40
E7ICAT E7RICAT	
H7UICAT	75W PAR30S, 75W PAR30L, 100W PAR38, 85W BR30, 90W BR40
H7ICTNB	<b>6120WH:</b> 43W A19, 75W PAR30S, 75W PAR30L, 65W PAR38, 65W BR30, 90W BR40
H7ICATNB	<b>6120SN, 6120TBZ:</b> 43W A19, 60W PAR30S, 75W PAR30L, 65W PAR38, 65W BR30, 90W BR40
E7ICATNB	
H7T E7TAT	100W A19, 150W A21, 75W PAR30S, 75W PAR30L, 150W PAR38, 85W BR30, 120W BR40
H7RT E7RTAT	
H7TCP	<b>6120WH:</b> 100W A19, 75W PAR30S, 75W PAR30L, 120W PAR38, 65W BR30 <b>6120SN, 6120TBZ:</b> 75W A19, 100W PAR38
H7TNB E7TATNB	100W A19, 150W A21, 75W PAR30S, 75W PAR30L, 150W PAR38, 85W BR30, 120W BR40

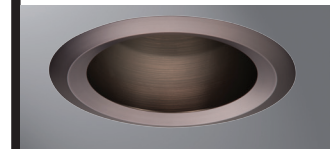
Compatible with Halogen, Incandescent, LED\* or CFL\* lamps.



**6120WH**  
White Reflector,  
White Trim



**6120SN**  
Satin Nickel Reflector,  
Satin Nickel Trim



**6120TBZ**  
Tuscan Bronze Reflector,  
Tuscan Bronze Trim

## 6120

6-Inch Full Cone Reflector,  
Self-flange



### ORDERING INFORMATION

SAMPLE NUMBER: 6120WH

Trim	Finish
6120= 6" Full Cone Reflector, Self-flange	<b>WH</b> =White reflector and trim <b>SN</b> =Satin nickel reflector and trim <b>TBZ</b> =Tuscan bronze reflector and trim

### HALO HOUSING COMPATIBILITY

Trim #	Style	H7ICT	H7ICAT	H7RICT	H7RICAT	E7ICAT	E7RICAT	H7UICAT	H7ICTNB
6120	Reflector	•	•	•	•	•	•	—	•
		H7ICATNB	E7ICATNB	H27ICAT	H27RICAT	E27ICAT	E27RICAT		
		•	•	—	—	—	—		
		H7T	H7TCP	H7RT	E7TAT	E7RTAT	H7TNB	E7TATNB	H27T
•	•	•	•	•	•	•	•	—	
		H27RT	E27TAT	E27RTAT					
—	—	—							

For use in select other's housings, refer to U.L. classification list at [www.eaton.com/lighting/legal](http://www.eaton.com/lighting/legal).

\*UL1993 listed LED & CFL equivalent lamps permitted. Consult lamp manufacturer for conditions of use. Eaton does not warranty the lamp.



For use in Halo listed housings.



Select trims are classified for use in others housings. See [www.eaton.com/lighting/legal](http://www.eaton.com/lighting/legal).

## E26 6" Trim Series

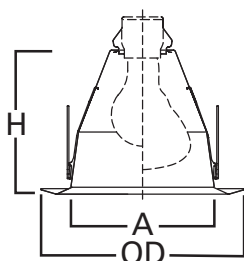
### DESCRIPTION

Full cone reflector trim with self-flange in the 6" trim family for use in recessed downlighting. Compatible for use in Halo and other housings.

Catalog #		Type
Project		
Comments		Date
Prepared by		

### SPECIFICATION FEATURES

- Full cone reflector for BR30, BR40, A19 and PAR30 and PAR38 lamps
- Torsion spring retention
- Socket supporting reflector
- Self-flanged trim ring sized to hide gaps caused by construction tolerances
- Makes installation Air-Tite, with any compatible housing



#### Dimensions:

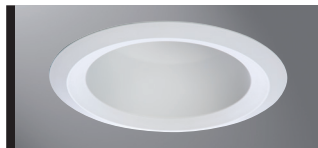
A: 5-7/16" [138mm]

H: 5-3/8" [138mm]

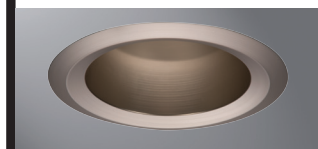
OD: 7-3/4" [197mm]

Housings	Max Lamp Compatibility
H7ICT H7RICT	<b>6120WH:</b> 43W A19, 75W PAR30S, 75W PAR30L, 65W PAR38, 65W BR30, 70W BR40
H7ICAT H7RICAT	<b>6120SN, 6120TBZ:</b> 43W A19, 60W PAR30S, 75W PAR30L, 65W PAR38, 65W BR30, 70W BR40
E7ICAT E7RICAT	
H7UICAT	75W PAR30S, 75W PAR30L, 100W PAR38, 85W BR30, 90W BR40
H7ICTNB	<b>6120WH:</b> 43W A19, 75W PAR30S, 75W PAR30L, 65W PAR38, 65W BR30, 90W BR40
H7ICATNB	<b>6120SN, 6120TBZ:</b> 43W A19, 60W PAR30S, 75W PAR30L, 65W PAR38, 65W BR30, 90W BR40
E7ICATNB	
H7T E7TAT	100W A19, 150W A21, 75W PAR30S, 75W PAR30L, 150W PAR38, 85W BR30, 120W BR40
H7RT E7RTAT	
H7TCP	<b>6120WH:</b> 100W A19, 75W PAR30S, 75W PAR30L, 120W PAR38, 65W BR30 <b>6120SN, 6120TBZ:</b> 75W A19, 100W PAR38
H7TNB E7TATNB	100W A19, 150W A21, 75W PAR30S, 75W PAR30L, 150W PAR38, 85W BR30, 120W BR40

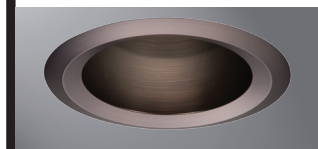
Compatible with Halogen, Incandescent, LED\* or CFL\* lamps.



**6120WH**  
White Reflector,  
White Trim



**6120SN**  
Satin Nickel Reflector,  
Satin Nickel Trim



**6120TBZ**  
Tuscan Bronze Reflector,  
Tuscan Bronze Trim

## 6120

6-Inch Full Cone Reflector,  
Self-flange



### ORDERING INFORMATION

SAMPLE NUMBER: 6120WH

Trim	Finish
6120= 6" Full Cone Reflector, Self-flange	<b>WH</b> =White reflector and trim <b>SN</b> =Satin nickel reflector and trim <b>TBZ</b> =Tuscan bronze reflector and trim

### HALO HOUSING COMPATIBILITY

Trim #	Style	H7ICT	H7ICAT	H7RICT	H7RICAT	E7ICAT	E7RICAT	H7UICAT	H7ICTNB
6120	Reflector	•	•	•	•	•	•	—	•
		H7ICATNB	E7ICATNB	H27ICAT	H27RICAT	E27ICAT	E27RICAT		
		•	•	—	—	—	—		
		H7T	H7TCP	H7RT	E7TAT	E7RTAT	H7TNB	E7TATNB	H27T
•	•	•	•	•	•	•	—		
		H27RT	E27TAT	E27RTAT					
—	—	—							

For use in select other's housings, refer to U.L. classification list at [www.eaton.com/lighting/legal](http://www.eaton.com/lighting/legal).

\*UL1993 listed LED & CFL equivalent lamps permitted. Consult lamp manufacturer for conditions of use. Eaton does not warranty the lamp.



Select trims are classified for use in others housings. See [www.eaton.com/lighting/legal](http://www.eaton.com/lighting/legal).