

Wire Pulling and Conduit Tools

Pulling wire and working with conduit is very challenging without the proper tools. Klein Tools' complete line of conduit tools allows you to get the job done while saving time, effort and materials.



For Professionals...
Since 1857™

FISH TAPES

Unique sloped handle optimizes hand position for quick hand-over-hand rewinds

Raised fingergrrips transfer 100% of the winding power from your hand and fingers

Polypropylene case and handle offer the maximum in impact resistance

Round inner ring design provides a smooth, surface for winding and rewinding



US Patents: 8899554 D574,277; 8,212,178; 8,168,921; 8,164,025
Other patents pending

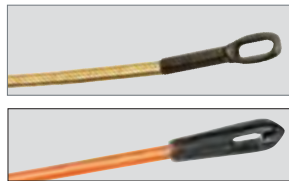


Available in steel and fiberglass with a wide variety of tips

Multi-Groove Fiberglass Fish Tapes

Additional Features:

- Fiberglass Performance at 25% Lower Cost!*
- Rigidity for long distance
- Less surface contact when pushing through crowded conduit
- Durable 7" (178 mm) leader helps push through crowded conduit
- Available resin eyelet for total non-conductivity



Old Profile New Profile



Less surface contact with wires



56055



Cat. No.	Tape Size	Reel Diameter	Weight
Multi-Groove Fiberglass - 7" (179 mm) Spiral Leader			
56055	100 ft. L x 3/16" W (30.5 m L x 4.8 mm W)	13" (330.2 mm)	3.0 lbs. (1.36 kg)
56056	200 ft. L x 3/16" W (61.0 m L x 4.8 mm W)	17" (431.8 mm)	6.2 lbs. (2.81 kg)
Multi-Groove Fiberglass - Non-Conductive			
56057	50 ft. L x 3/16" W (15.2 m L x 4.8 mm W)	13" (330.2 mm)	2.3 lbs. (1.04 kg)
56058	100 ft. L x 3/16" W (30.5 m L x 4.8 mm W)	13" (330.2 mm)	3.1 lbs. (1.41 kg)
56059	200 ft. L x 3/16" W (61.0 m L x 4.8 mm W)	17" (431.8 mm)	6.0 lbs. (2.72 kg)
Replacement Parts and Kits			
Cat. No.	Description	Included	Weight
56115	Fiberglass Fish Tape Repair Kit	(1) High Leverage Crimper, (2) 7" (177.8 mm) Flexible Leaders, (2) Eyelets, (1) Tube Quick-Drying Glue	2.2 lbs. (1.00 kg)
56025	Non-conductive Fish Tape Repair Kit	Non-Conductive Eyelets (2 Ea.), Tube Quick-Drying Glue (1 Ea)	2.2 lbs. (1.00 kg)
56116	Fiberglass Fish Tape Replacement Eyelets	—	1 oz. (27 g)
56120	Fiberglass Fish Tape Replacement Leaders	—	1.8 oz. (50 g)

*When compared to published price of Klein Tools fiberglass fish tapes.





Fish Tapes

Fiberglass Fish Tapes

Additional Features:

- Designed for flexibility and easy navigation through conduit runs
- Non-conductive, fiberglass fish tape slides easily over existing wires and through multiple bends
- Durable 7" (179 mm) leader helps push through crowded conduit
- The lightweight and strong fiberglass composite tape resists harsh elements and is strength rated up to 500 pulling pounds
- Repair kit (Cat. No. 56115) available to replace tips
- Replacement metal eyelets (Cat. No. 56116) and spiral steel leaders (Cat. No. 56120) available



1' permanent laser etched descending increments.



56010

Cat. No.	Tape Size	Reel Diameter	Weight
56009	50 ft. L x 3/16" W (7" Leader) (15.2 m L x 4.8 mm W [177.8 mm Leader])	13" (330.2 mm)	2.8 lbs. (1.27 kg)
56010	100 ft. L x 3/16" W (7" leader) (30.5 m L x 4.8 mm W [177.8 mm Leader])	13" (330.2 mm)	3.5 lbs. (1.59 kg)
56014	200 ft. L x 3/16" W (7" Leader) (60.96 m L x 4.8 mm W [177.8 mm Leader])	17" (431.8 mm)	6.2 lbs. (2.81 kg)

Replacement Tapes

Cat. No.	Description	Included	Weight
56115	Fiberglass Fish Tape Repair Kit	(1) High Leverage Crimper, (2) 7" (177.8 mm) Flexible Leaders, (2) Eyelets, (1) Tube Quick-Drying Glue	2.2 lbs. (1.00 kg)
56116	Fiberglass Fish Tape Replacement Eyelets	—	1 oz. (27 g)
56120	Fiberglass Fish Tape Replacement Leaders	—	1.8 oz. (50 g)

1/8" (3 mm) Wide Steel Fish Tapes

Additional Features:

- High strength spring steel fish tapes are stiff for long runs and are great for heavy duty wire pulls
- Full grip style handle gives you a firm, steady grip as you pull tape from the case
- Stainless Steel fish tape (Cat. Nos. 56007, 56008) is corrosion resistant and extends the life of the tool



1' permanent laser etched descending increments.



56001

Cat. No.	Tape Size	Reel Diameter	Weight
Stainless Steel for Corrosion Resistance			
56007	125' L x 1/8" W x 0.062" H (38.1 m L x 3.2 mm W x 1.57 mm H)	13" (330.2 mm)	4.7 lbs. (2.13 kg)
56008	240 ft. L x 1/8" W x 0.062" H (73.2 m L x 3.2 mm W x 1.57 mm H)	13" (330.2 mm)	7.5 lbs. (3.40 kg)

Flat Steel

56000	25 ft. L x 1/8" W x 0.045" H (7.6 m L x 3.2 mm W x 1.14 mm H)	7" (177.8 mm)	1.0 lbs. (0.45 kg)
56001	50 ft. L x 1/8" W x 0.045" H (15.2 m L x 3.2 mm W x 1.14 mm H)	7" (177.8 mm)	1.3 lbs. (0.59 kg)
56002	65 ft. L x 1/8" W x 0.062" H (19.8 m L x 3.2 mm W x 1.57 mm H)	9" (228.6 mm)	2.6 lbs. (1.18 kg)
56003	125' L x 1/8" W x 0.062" H (38.1 m L x 3.2 mm W x 1.57 mm H)	13" (330.2 mm)	4.7 lbs. (2.13 kg)
56004	240 ft. L x 1/8" W x 0.062" H (73.2 m L x 3.2 mm W x 1.57 mm H)	13" (330.2 mm)	7.5 lbs. (3.40 kg)

Replacement Tapes

56065	65 ft. L x 1/8" W x 0.062" H (19.8 m L x 3.2 mm W x 1.57 mm H)	—	1.7 lbs. (0.77 kg)
56125	125 ft. L x 1/8" W x 0.062" H (38.1 m L x 3.2 mm W x 1.57 mm H)	—	3.3 lbs. (1.50 kg)
56240	240 ft. L x 1/8" W x 0.062" H (73.2 m L x 3.2 mm W x 1.57 mm H)	—	6.1 lbs. (2.77 kg)

See page 310 for additional information on warnings.



WARNING: Never remove screws while fish tape is coiled inside reel.

Fish Tapes

1/4" (6 mm) Wide Steel Fish Tapes

Additional Features:

- Tempered, high quality tape keeps its stability as it glides between surfaces for effective pushing and pulling of wire under carpets, through insulated walls and over suspended ceilings
- 25' length with no snag tip, is perfect for short wire runs associated with light commercial, residential and voice-data-video-audio installations (Cat. No. 56005)



56005 has a no snag plastic tip



1' permanent laser etched descending increments.



56005

Cat. No.	Tape Size	Reel Diameter	Weight
56005	25 ft. L x 1/4" W x 0.030" H (7.6 m L x 6.4 mm W x 0.76mm H)	7" (177.8 mm)	1.1 lbs. (0.50 kg)
56006	100' L x 1/4" W x 0.062" H (30.5 m L x 6.4 mm W x 1.57 mm H)	13" (330.2 mm)	6.8 lbs. (3.08 kg)

Spiral Steel Fish Tapes

Additional Features:

- Designed for super flexibility and easy navigation through conduit runs
- Slides easily over existing wires and through multiple bends
- The durable spiral steel tape construction yields a maximum pulling force of up to 250 lbs.
- Replacement metal eyelets (Cat. No. 56116) and spiral steel leaders (Cat. No. 56120) available



56013

Cat. No.	Tape Size	Reel Diameter	Weight
56013	50 ft. L x 3/16" W (15.2 m L x 4.8 mm W)	13" (330.2 mm)	5.1 lbs. (2.31 kg)

Replacement Parts and Kits

Cat. No.	Description	Length	Weight
56116	Fiberglass Fish Tape Replacement Eyelets	1-1/2" (38.1 mm)	1 oz. (27 g)
56120	Fiberglass Fish Tape Replacement Leaders	8-15/16" (227.0 mm)	1.8 oz. (50 g)

Fish Tape Accessories

Fiberglass Fish Tape Repair Kit

- Contains high leverage ratcheting crimper, two replacement eyelets, two 7" (179 mm) replacement leaders, one tube of quick dry glue and comprehensive instructions
- Multi-function ratcheting crimper (Cat. No. 56115V) cuts tape cleanly, strips tapes and crimps on new attachments
- Newly crimped on eyelets meet or exceed original factory pulling strength requirements
- Protective carry case firmly holds all tools and additional parts in handy, organized compartments
- Cat. No. 56025 is for repairing non-conductive fiberglass fish tapes



56115

Cat. No.	Included	Weight
56115	(1) High Leverage Crimper, (2) 7" (177.8 mm) Flexible Leaders, (2) Eyelets, (1) Tube Quick-Drying Glue	2.2 lbs. (1.00 kg)
56025	Non-Conductive Eyelets (2 Ea.), Tube Quick-Drying Glue (1 Ea)	2.2 lbs. (1.00 kg)





Fish Tape Accessories

2-Pack 7" (179 mm) Replacement Flexible Leaders & 6-Pack Replacement Eyelets

- For use only with fiberglass fish tapes (Cat. No. 56009, 56010 & 56014)
- Attach with Klein Tools ratcheting crimper (Cat. No. 56115V) available in kit 56115 only

Cat. No.	Length	Weight
56120	8-15/16" (227.0 mm)	1.8 oz. (50 g)
56116	1-1/2" (38.1 mm)	1 oz. (27 g)



56120



56116

13" (330 mm) Flexible Leader for Steel Fish Tapes

- For use with 1/8" (3 mm) wide steel fish tapes
- Heavy duty construction is strength rated up to 250 pulling pounds
- High capacity eyelet holds up to five #12 unstripped wires and seven #10 bare wires
- Retrofit instructions included
- The 3/16" (5 mm) diameter tape has a rustproof inner steel cable core wrapped with a spiral cover for exceptional flexibility
- Flexible leader guides steel tapes through 90° bends and makes pulling and pushing flat steel tapes easier

Cat. No.	Diameter	Length	Weight
50350	3/16" (4.8 mm)	13-1/2" (342.9 mm)	1.6 oz. (45 g)



50350

6 Loop Wire Pulling Leader

- Save time by attaching leader to the end of a fish tape and pull up to six wires at once
- Braided steel construction provides up to 450 lbs. pull strength on main eyelet
- Flexible construction allows for easy navigation through multiple bends in conduit
- Staggered loop lengths won't overlap and clog pipe
- For use with 1/8" and 1/4" (3 mm and 6 mm) flat steel fish tapes

Cat. No.	Length	Weight
56107	11-1/4" (285.8 mm)	3.2 oz. (91 g)



56107

Steel Fish Tape Swivel Eyelet

- For use with 1/8" (6 mm) wide steel fish tapes
- Swivel head design helps prevent kinks and allows smoother, easier fishing in tight turns
- High capacity eyelet holds up to five #12 unstripped wires or seven #10 bare wires
- High strength steel construction allows for optimal performance over repeated uses
- Retrofit instructions included

Cat. No.	Diameter	Length	Weight
50351	3/16" (4.8 mm)	1-1/2" (38.1 mm)	0.5 oz. (14 g)



50351



Fish Rods & Accessories



Exclusive Splinter Guard™ protection from painful fiberglass splinters
Rods have threaded beveled connectors to attach to desired length and prevent snagging on obstructions

LO flex – long, straight feeding
HIGH flex – tight bends in walls
MID flex – all needs in between

Luminescent glow rods provide added visibility in dark work spaces

Shines 2X brighter and lasts 2X longer than ordinary glow rods



Fish and Glow Rods

Additional Features:

- Variety of flexibilities and lengths for any application such as walls, drop ceilings, attics, crawl spaces, etc.
- Sets include bull nose and hook attachments to attach and grab wires
- Cat. No. 56430 also includes illuminated tip



Cat. No.	Description	Included	Diameter	Overall Length	Weight
Fish Rods					
56312	12' (3.7 m) Lo-Flex Fish Rod Set	(3) 1/4" (6.4 mm) Diameter 4' (1.2 m) Fish Rods with Bullet Nose and Hook Attachments	1/4" (6.4 mm)	12 ft. (3.7 m)	1.1 lbs. (0.50 kg)
56324	24' (7.3 m) Lo-Flex Fish Rod Set	(4) 1/4" Diameter 6' (1.5 m) Fish Rods with Bullet Nose and Hook Attachments	1/4" (6.4 mm)	24' (7.3 m)	1.9 lbs. (0.86 kg)
56325	25' (7.6 m) Fish and Glow Rod Set	(5) 1/4" 1/4" (6.4 mm) Diameter 4' Diameter 4' (1.2 m) Fish Rods, Fish Rods, (1) 3/16" 3/16" (4.8 mm) Diameter 5'	1/4" to 3/16" (6.4 to 4.8 mm)	25 ft. (7.6 m)	1.8 lbs. (0.82 kg)
Glow Rods					
56406	6' (1.8 m) Hi-Flex Glow Rod		5/32" (4.0 mm)	6 ft. (1.8 m)	3.2 oz. (91 g)
56409	9' (2.7 m) Mid-Flex Glow Rod Set	(6) 3/16" (4.76 mm) Diameter 18" (457.2 mm) Glow Rods with Bullet Nose and Hook Attachments	3/16" (4.8 mm)	9 ft. (2.7 m)	8.8 oz. (249 g)
56415	15' (4.6 m) Mid-Flex Glow Rod Set	(3) 3/16" (4.8 mm) Diameter 5' (1.5 m) Glow Rods with Bullet Nose and Hook Attachments	3/16" (4.8 mm)	15 ft. (4.6 m)	13.6 oz. (386 g)
56418	18' (5.5 m) Hi-Flex Glow Rod Set	(3) 5/32" (4 mm) Diameter 6' (1.8 m) Glow Rods with Bullet Nose and Hook Attachments	5/32" (4.0 mm)	18 ft. (5.5 m)	13.6 oz. (386 g)
56430	30' Glow Rod Set	(6) 3/15" (4.7 mm) Diameter x 5' (1.5 m) Glow Rods with Bullet Nose, Hook, and LED-Illuminated Tip Attachments	3/16" (4.8 mm)	30 ft. (9.1 m)	1.2 lbs. (0.54 kg)

Deluxe Fish and Glow Rod Kit

- Heavy-duty storage case with fitted pockets and straps for organization
- Large handles fit over the shoulder for easy transport
- Convenient zipper pocket for accessory storage



Cat. No.	Included	Overall Length	Weight
56326	(2) 1/4" (6.4 mm) Diameter 6 ft. (1.8 m) Lo-Flex and (2) 1/4" (6.4 mm) Diameter 4 ft. (1.2 m) Lo-Flex Fish Rods, (3) 3/16" (4.8 mm) Diameter 5 ft. (1.5 m) Mid-Flex Glow Rods, (3) 5/32" (4 mm) Diameter 6 ft. (1.8 m) Hi-Flex Glow Rods, (1) Hook, (1) Bullet Nose, and (1) Carrying Case	75" (1905.0 mm)	3.8 lbs. (1.72 kg)

Illuminated Fish Rod Tip

- Lights up for maximum visibility in dark spaces
- Bright white, omni-directional LED light for long life
- Threaded top for hook or bullet nose attachment (not included)
- Fits drilled holes as small as 5/8" (16 mm)
- Compatible with Lo, Mid and High flex rods
- Replaceable batteries included
- U.S. Pat. No. 9,062,834



56119

Cat. No.	Description	Dimensions	Weight
56119	Illuminated Fish Rod Tip	2.5" L x 37/64" Diameter (63.5 mm L x 14.7 mm Diameter)	5.0 oz. (142 g)

Fish Rod Accessories

- Attachments help guide, grab, attach and steer wire or cable
- Compatible with Lo, Mid and High flex rods



56104

Cat. No.	Description	Included	Weight
56104	3 Piece Fish and Glow Rod Attachment Set	(1) Whisk Attachment (1) Bullet Nose Attachment (1) Hook Attachment	0.2 oz. (5.7 g)





Wire Pulling Tools

WireSpanner™ - Telescopic Pole 18'

SUPER ROD® SERIES



- Extends to 18' (5.4 m) in 10 seconds
- Easily retrieve cable from a distance without needing an extra pair of hands to shorten installation time
- Large hook attachment pulls multiple wires easily
- Friction-twist lock pole design stays locked in place
- Lightweight resin slides easily over obstructions
- Compact design retracts to 32" (813 mm) for easy storage

SRS56036

Cat. No.	Compact Length	Extended Length	Weight
SRS56036	32" (812.8 mm)	18 ft. (5.5 m)	2.8 lbs. (1.27 kg)

Polymer Fish Rod Set with Glow-in-the-Dark Leaders

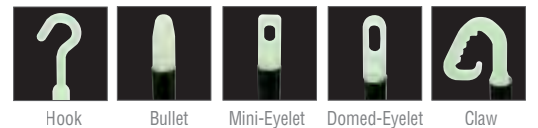
SUPER ROD® SERIES

- Non-conductive rods designed for working in confined spaces
- Great for routing cables in wire racks and on short runs
- Attachments glow in the dark for ease of use
- Includes 14" (356 mm) rods of various flexibilities and illumination for a range of individual (or 56" (1.4 m) combined) wire pulling applications
- Includes five Glow-in-the-Dark leaders (hook, bullet, mini-eyelet, domed-eyelet and claw)
- Convenient storage tube protects the rods between use and fits easily into your bag or toolbox



SRS56038

5 Attachments Included



Hook Bullet Mini-Eyelet Domed-Eyelet Claw

Cat. No.	Extended Length	Weight
SRS56038	56" (1.4 m)	4.0 oz. (113 g)

Magnetic Wire Pulling System

- This system allows you to effortlessly pull cable behind walls by yourself
- Navigates through insulation and other obstructions
- Perfect for routing cable between drywall and insulation or fixture installations
- Swivel leader eyelet securely connects to most wires and mesh wire pulling grips
- Non-marring nylon leader-pull with 20' (6.1 m) of heavy-duty nylon rope eyelet for wire tie-on



SRS56037

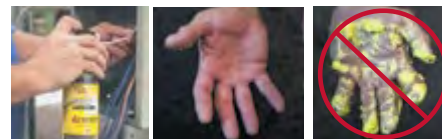
Cat. No.	Length	Weight
SRS56037	20 ft. (6.1 m)	6.4 oz. (181 g)



Wire Pulling Lubricant

Wire Pulling Foam Lubricant

- **NO DRIPS! NO STAINS! NO MESS!**
- One can equals one gallon or 4 quarts of wax/gel lubricants*
- Foam lubricant is applied directly into the conduit. No need to pre-coat wires
- No mess formula stays where it is applied, even in vertical conduit
- Dissolves clean from hands and clothing



Cat. No.	Description	Weight
51100	Wire Pulling Foam Lubricant	1.2 lbs. (0.54 kg)

*Based on job site pulls with foam in 3/4" conduit when used as directed.



51100

⚠ WARNING:

- Contents under pressure. Do not expose container to direct sunlight or temperatures above 120°F. Do not transport or store near heat sources. Keep cans dry and away from sources of ignition. If frozen, gradually warm to room temperature.
- Do not use wet product on live circuits. Compound is electrically conductive before it dries.

See page 310 for additional information on warnings.



Wire Pulling Lubricant

One-Quart Premium Synthetic Clear™

- Designed for use primarily in finished workspaces (i.e. around painted walls and carpeted floors)
- The crystal clear formulation is easy to clean-up and will not stain
- Excellent all purpose lubricant for electrical or datacom applications
- Compatible with most types of cable jackets
- Will not separate out in hot environments for when exposed to freezing temperatures

Cat. No.	Size	Container	Temperature Range	Weight
51028	1 Quart (0.9 L)	Squeeze Bottle	20° F to 122° F (-6° C to 50° C)	2.3 lbs. (1.04 kg)

US LISTED
Wire Pulling Lubricant 842F



51028

Premium Synthetic Wax™

- High performance lubricant for general electrical and utility applications
- Temperature stable and does not liquify and drop off after high temperature exposure
- Compatible with most types of cable, including low density polyethylene
- Superior "clingability" coats wires and conduit evenly
- Exceptional lubricity
- Non-staining, slow-drying, easy clean-up formula

US LISTED
Wire Pulling Lubricant 842F

Cat. No.	Size	Container	Temperature Range	Weight
51010	1 Quart (0.9 L)	Squeeze Bottle	20° F to 122° F (-6° C to 50° C)	2.3 lbs. (1.04 kg)
51012	1 Gallon (3.8 L)	Bucket	20° F to 122° F (-6° C to 50° C)	8.8 lbs. (3.99 kg)
51013	5 Gallon (18.9 L)	Bucket	20° F to 122° F (-6° C to 50° C)	44.0 lbs. (19.96 kg)
56117	1 Quart (0.9 L)	Squeeze Bottle - 6 Pack	20° F to 122° F (-6° C to 50° C)	13.5 lbs. (6.12 kg)



51010



51012

Premium Synthetic Polymer™

- Excellent all-purpose lubricant for electrical, telecommunications and data applications
- Easy-to-apply gel evenly clings instantly to the cable for easy handling and application
- Compatible with most types of cable, including polyethylene and semi conducting jackets
- Superior "clingability" coats wires and conduit evenly
- Non-staining, slow-drying, easy clean-up formula

US LISTED
CERTIFIED TO CSA
STANDARD C22.2 NO. 249-96

Cat. No.	Size	Container	Temperature Range	Weight
51015	1 Quart (0.9 L)	Squeeze Bottle	20° F to 140° F (-6° C to 60° C)	2.3 lbs. (1.04 kg)
51017	1 Gallon (3.8 L)	Bucket	20° F to 140° F (-6° C to 60° C)	8.8 lbs. (3.99 kg)
51018	5 Gallon (18.9 L)	Bucket	20° F to 140° F (-6° C to 60° C)	44.0 lbs. (19.96 kg)



51015



51017

Wire Pulling Supplies

Poly Pull Line

- Use polypropylene line with manual or power fishing systems for light duty cable or rope pulling applications
- Ready to use storage containers quickly dispense a tangle free line and also protects line from direct sunlight
- Line is resistant to rot and mildew
- Up to 210 lbs. (95.2 kg) average breaking strength

Cat. No.	Description	Container	Weight
56108	Poly Pull Line with Orange Tracer 500'	One-Quart Size w/Locking Lid	1.0 lbs. (0.45 kg)
56110	Poly Pull Line with Orange Tracer 6500'	Five-Gallon Bucket	11.0 lbs. (4.99 kg)



56108



56110



Conduit Tools

Conduit Locknut Wrench

- Easily attach locknuts in tight or deep cut-in boxes
- For 1/2" and 3/4" connectors
- Direct-drive heads rotate each other when twisted
- Heavy-duty steel construction enables needed torque to loosen or tighten connectors
- Perfect for remodel work where box is filled with existing wires



56999



US Patent pending

Cat. No.	Fitting Size	Overall Length	Weight
56999	1/2" and 3/4"	9" (228.6 mm)	11.2 oz. (318 g)

High-Leverage Side-Cutting Pliers - Fish Tape Pulling

Additional Features:

- Easily pulls 1/8" or 1/4" flat steel fish tape without damaging the tape
- High-leverage design. Rivet is closer to the cutting edge for 46% greater cutting and gripping power than other pliers designs
- Streamlined design
- Cat. No. J2000-9NECRTP crimps non-insulated connectors, lugs, and terminals



D213-9NETP

Cat. No.	Nose Type	Overall Length	Jaw Length	Jaw Width	Jaw Thickness	Knife Length	Handle Finish	Handle Color	Weight
D213-9NETP	New England	9-3/8" (238.1 mm)	1-19/32" (40.5 mm)	1-1/4" (31.8 mm)	5/8" (15.9 mm)	25/32" (19.8 mm)	Plastic-Dipped	Dark Blue	1.1 lbs. (0.50 kg)
Journeyman™ Series – Dual-material handles									
J213-9NETP	New England	9-1/2" (241.3 mm)	1-19/32" (40.5 mm)	1-1/4" (31.8 mm)	5/8" (15.9 mm)	25/32" (19.8 mm)	Journeyman	Dark Blue/Black	1.1 lbs. (0.50 kg)
2000 Series* – Heavy-duty cutting knives									
D2000-9NETP	New England	9-3/8" (238.1 mm)	1-19/32" (40.5 mm)	1-1/4" (31.8 mm)	5/8" (15.9 mm)	25/32" (19.8 mm)	Plastic-Dipped	Royal Blue	1.1 lbs. (0.50 kg)
Journeyman™ 2000 Series* – Dual-material handles									
J2000-9NETP	New England	9-1/2" (241.3 mm)	1-19/32" (40.5 mm)	1-1/4" (31.8 mm)	5/8" (15.9 mm)	25/32" (19.8 mm)	Journeyman	Light Blue/Black	1.1 lbs. (0.50 kg)
J2000-9NECRTP	New England	9-1/2" (241.3 mm)	1-19/32" (40.5 mm)	1-1/4" (31.8 mm)	5/8" (15.9 mm)	25/32" (19.8 mm)	Journeyman	Blue/Black	1.1 lbs. (0.50 kg)

*Cuts ACSR, screws, nails, and most hardened wire. Features combination polished and black-oxide finish.

Conduit Locknut and Reaming Pliers

- Tightens 1/2" (13 mm) and 3/4" (19 mm) EMT or 1/2" (13 mm) rigid locknuts
- Fits liquid tight fittings and caps
- Reams and deburrs both inside and outside of conduit
- Knurled jaws at nose tip pull wire or fish tape
- Machined nose fits snugly into locknut wings



D333-8

Cat. No.	Overall Length	Jaw Length	Jaw Width	Jaw Thickness	Point Thickness	Handle Finish	Handle Color	Weight
D333-8	7-3/4" (196.9 mm)	1-5/8" (41.3 mm)	15/16" (23.8 mm)	1/2" (12.7 mm)	3/16" (4.8 mm)	Plastic-Dipped	Yellow	8.8 oz. (249 g)

Conduit-Fitting and Reaming Screwdriver

- Hooded-blade design keeps tip from slipping out of screws, especially when tightening hard-to-reach conduit fittings. Thicker hood is designed for rugged use
- Reams and smooths 1/2" (13 mm), 3/4" (19 mm), and 1" (25 mm) thin-wall conduit ends to protect wire and permit correct installation of fittings
- Reams both the inside and outside of the conduit at the same time
- Longer Cushion-Grip handle provides comfort and more torque for reaming
- Replaceable reaming blade is now held in place with a 1/6" (1.5 mm) set screw



85191

Cat. No.	Tip Size	Shank Length	Overall Length	Weight
85191	5/16" (7.9 mm)	2-1/2" (63.5 mm)	7-1/2" (190.5 mm)	8.0 oz. (227 g)
19353	Conduit Reamer Replacement Blade			0.16 oz. (4.5 g)

See page 310 for additional information on warnings.



Conduit Benders

Exclusive design reduces rippling and ovaling of conduit

The traditional Benfield® head design

accurately and consistently performs common bends such as Stub Ups, Offsets, Back-to-Back and Saddle Bends

Wide foot pedal provides excellent stability, leverage and comfort

Interior clamp securely holds conduit while cutting with hacksaw

Interior hook surface prevents conduit from rolling or twisting during bends

Easily visible arrow for ease of alignment on conduit marks

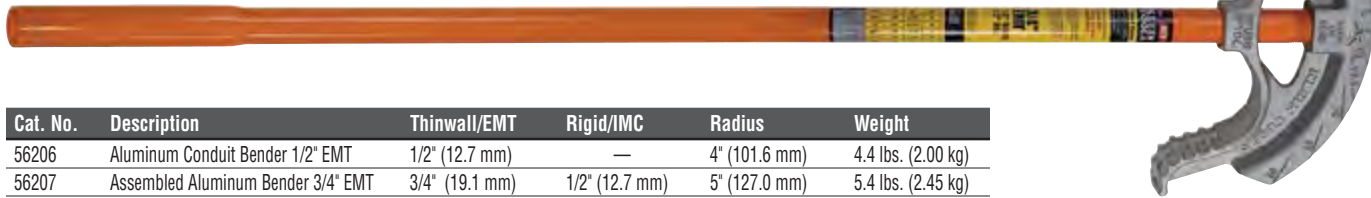
Bold cast-in symbols, degree scales, multiplier scales and center of bend marks help save time on the job



Aluminum Conduit Benders

Additional Features:

- Lightweight die-cast aluminum construction
- Both Cat. Nos. 56206 and 56207 come assembled with #51427 handle



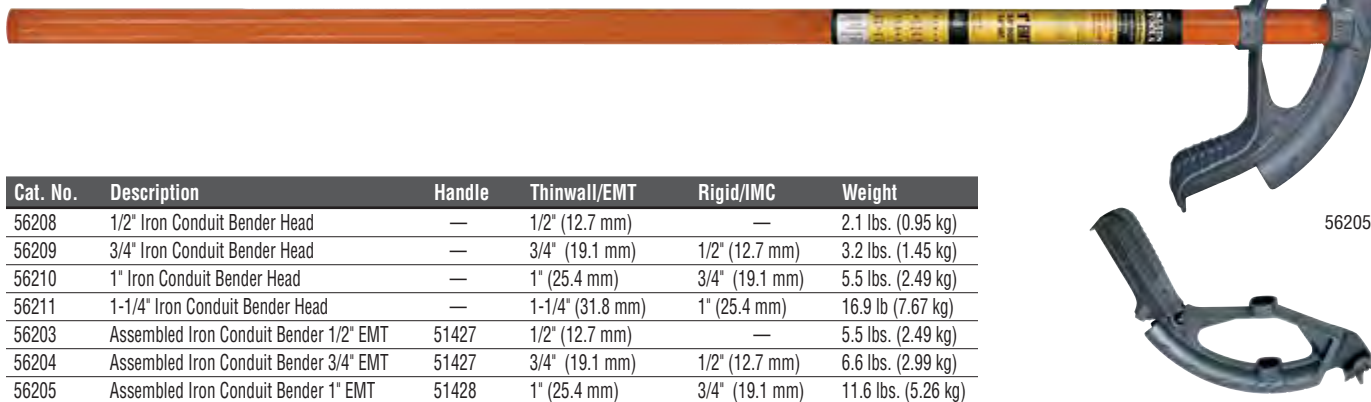
56207

Cat. No.	Description	Thinwall/EMT	Rigid/IMC	Radius	Weight
56206	Aluminum Conduit Bender 1/2" EMT	1/2" (12.7 mm)	—	4" (101.6 mm)	4.4 lbs. (2.00 kg)
56207	Assembled Aluminum Bender 3/4" EMT	3/4" (19.1 mm)	1/2" (12.7 mm)	5" (127.0 mm)	5.4 lbs. (2.45 kg)

Iron Conduit Benders

Additional Features:

- High strength steel handle features a swaged end for inserting conduit to correct overbends (Cat. Nos. 56203 & 56204 only)
- Bright orange color handle is easy to spot on the jobsite



56205

56211

Cat. No.	Description	Handle	Thinwall/EMT	Rigid/IMC	Weight
56208	1/2" Iron Conduit Bender Head	—	1/2" (12.7 mm)	—	2.1 lbs. (0.95 kg)
56209	3/4" Iron Conduit Bender Head	—	3/4" (19.1 mm)	1/2" (12.7 mm)	3.2 lbs. (1.45 kg)
56210	1" Iron Conduit Bender Head	—	1" (25.4 mm)	3/4" (19.1 mm)	5.5 lbs. (2.49 kg)
56211	1-1/4" Iron Conduit Bender Head	—	1-1/4" (31.8 mm)	1" (25.4 mm)	16.9 lb (7.67 kg)
56203	Assembled Iron Conduit Bender 1/2" EMT	51427	1/2" (12.7 mm)	—	5.5 lbs. (2.49 kg)
56204	Assembled Iron Conduit Bender 3/4" EMT	51427	3/4" (19.1 mm)	1/2" (12.7 mm)	6.6 lbs. (2.99 kg)
56205	Assembled Iron Conduit Bender 1" EMT	51428	1" (25.4 mm)	3/4" (19.1 mm)	11.6 lbs. (5.26 kg)





Conduit Bender Handles

Bender Handles



- Available in multiple sizes and lengths and are compatible with all Klein Tools conduit bender heads
- High-strength steel eliminates flex and provides excellent feel, control and leverage
- Handle features an enlarged diameter hollow end for inserting conduit to correct overbends (Cat. No. 51427)
- Bright orange color is easy to spot on the jobsite



51427

Cat. No.	Description	Item	NPT Tap Size	Length	Fits	For Use With	Weight
51427	Conduit Bender Handle for 1/2", 3/4"	Conduit Bender Handle	3/4" (19.1 mm)	38" (965.2 mm)	1/2" and 3/4" Bender Heads	56208 and 56209	3.5 lbs. (1.59 kg)
51428	Conduit Bender Handle for 1" Heads	Conduit Bender Handle	1" (25.4 mm)	44" (1117.6 mm)	1" Bender Head	56210	6.0 lbs. (2.72 kg)
51429	Conduit Bender Handle for 1-1/4" Heads	Conduit Bender Handle	1-1/4"	54" (1371.6 mm)	1-1/4" Bender Head	56211	8.9 lbs. (4.04 kg)

Armored Cable Cutter

BX and Armored Cable Cutter

- Cuts BX and 3/8" armored cable
- Eliminates burrs
- Does not nick cable
- Easily cuts 3/8" flexible conduit and #10, 12, and 14 armored cables with up to 4 wires with a couple of turns of the handle
- Depth of cut adjusts between standard MC and reduced diameter MC
- Extra blade storage in handle
- Use with Klein Tools replacement blade Cat. No. 53726-SEN



53725

Cat. No.	Length	Weight
53725	7-1/4" (184.2 mm)	2.0 lbs. (0.91 kg)

Replacement Parts

Cat. No.	Description	For Use With	Weight
53726SEN	BX Cutter Replacement Blade	Klein Tools Cable Cutter 53725	1.6 oz. (45 g)

Conduit Scoring Tool

Electrician's Conduit Scoring Tool

- Durable zinc cast scoring tool eliminates spiraling
- Used for scoring 1/2", 3/4" and 1" EMT conduit
- Klein-designed, patented scoring wheel scores and allows clean conduit snaps without leaving burrs inside
- 1" scoring wheel conveniently located in base of the handle; no tools required to replace scoring wheels
- Four roller tracks specifically designed for professional use
- Compact, enclosed design for use on job sites



88906

Cat. No.	Length	Conduit Diameter	Weight
88906	6" (152.4 mm)	Scores 1/2", 3/4" and 1" (12.7 mm, 19.1 mm and 25.4 mm) EMT Conduit	1.3 lbs. (0.59 kg)

Replacement Parts

Cat. No.	Description	Weight
88907	1/2", 3/4" EMT Replacement Scoring Wheel	0.3 oz. (8.5 g)
88908	1" EMT Replacement Scoring Wheel	0.3 oz. (8.5 g)



88907

88908



PVC-Cutters

PVC-Cutter

- Cuts up to 3/4" schedule 40 PVC
- Makes clean burr-free cuts in PVC and flexible pipe
- Reversible blade doubles life
- Cuts 1-3/8" outer diameter flexible plastic pipe
- Steel construction for strength
- Guide helps cut pipe squarely
- Handle latch keeps tool closed



50506-SEN

Cat. No.	PVC Cutting Capacity	Non-metallic Tubing Cutting Capacity	Length	Weight
50506SEN	3/4" (19.1 mm) Schedule 40	1" (25.4 mm)	8-1/2" (215.9 mm)	1.0 lbs. (0.45 kg)
Replacement Parts				
Cat. No.	Description	Length	Weight	
50549	Replacement Blade for Cat. No. 50506	3-1/4" (82.6 mm)	1.3 oz. (37 g)	



50549

Ratcheting PVC-Cutters

- Provide straight cuts 1/2"-2" I.D. (13 mm-51 mm) O.D. 5/8" - 2-1/2" (16 mm-64 mm) of white and gray schedule 40 and 80 PVC
- Quick, one-handed blade release
- Ratchet action allows easy, one-hand cutting
- No tools required for instant blade change
- Replacement blade and pin available



50031

Cat. No.	PVC Cutting Capacity	Length	Weight
50031	O.D. 5/8" to 1-5/8" (15.9 to 41.3 mm); I.D. 1/2" to 1-1/4" (12.7 to 31.8 mm)	9" (228.6 mm)	1.1 lbs. (0.50 kg)
50034	O.D. 5/8" to 2-1/2" (15.9 to 63.5 mm); I.D. 1/2" to 2" (12.7 to 50.8 mm)	11" (279.4 mm)	1.3 lbs. (0.59 kg)
Replacement Parts			
Cat. No.	Description	Length	Weight
50032	Blade for Ratcheting PVC Cutter	4" (101.6 mm)	3.0 oz. (86 g)
50035	Blade for Large Capacity PVC Cutter	4" (101.6 mm)	3.0 oz. (86 g)
50033	Replacement Retaining Pin for PVC Cutter	2-3/8" (60.3 mm)	0.1 oz. (2.7 g)



50032

50033

WARNING: Do NOT cut cold PVC.

WARNING: Do NOT use to cut metallic pipes, cable or wire.



Wire Pulling and Conduit Tools

Pulling wire and working with conduit is very challenging without the proper tools. Klein Tools' complete line of conduit tools allows you to get the job done while saving time, effort and materials.



For Professionals...
Since 1857™

FISH TAPES

Unique sloped handle optimizes hand position for quick hand-over-hand rewinds

Raised fingergrrips transfer 100% of the winding power from your hand and fingers

Polypropylene case and handle offer the maximum in impact resistance

Round inner ring design provides a smooth, surface for winding and rewinding



US Patents: 8899554 D574,277; 8,212,178; 8,168,921; 8,164,025
Other patents pending

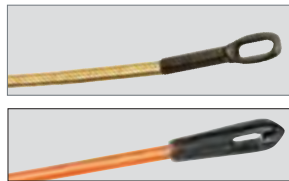


Available in steel and fiberglass with a wide variety of tips

Multi-Groove Fiberglass Fish Tapes

Additional Features:

- Fiberglass Performance at 25% Lower Cost!*
- Rigidity for long distance
- Less surface contact when pushing through crowded conduit
- Durable 7" (178 mm) leader helps push through crowded conduit
- Available resin eyelet for total non-conductivity



Old Profile

New Profile



Less surface contact with wires



56055



Cat. No.	Tape Size	Reel Diameter	Weight
Multi-Groove Fiberglass - 7" (179 mm) Spiral Leader			
56055	100 ft. L x 3/16" W (30.5 m L x 4.8 mm W)	13" (330.2 mm)	3.0 lbs. (1.36 kg)
56056	200 ft. L x 3/16" W (61.0 m L x 4.8 mm W)	17" (431.8 mm)	6.2 lbs. (2.81 kg)
Multi-Groove Fiberglass - Non-Conductive			
56057	50 ft. L x 3/16" W (15.2 m L x 4.8 mm W)	13" (330.2 mm)	2.3 lbs. (1.04 kg)
56058	100 ft. L x 3/16" W (30.5 m L x 4.8 mm W)	13" (330.2 mm)	3.1 lbs. (1.41 kg)
56059	200 ft. L x 3/16" W (61.0 m L x 4.8 mm W)	17" (431.8 mm)	6.0 lbs. (2.72 kg)
Replacement Parts and Kits			
Cat. No.	Description	Included	Weight
56115	Fiberglass Fish Tape Repair Kit	(1) High Leverage Crimper, (2) 7" (177.8 mm) Flexible Leaders, (2) Eyelets, (1) Tube Quick-Drying Glue	2.2 lbs. (1.00 kg)
56025	Non-conductive Fish Tape Repair Kit	Non-Conductive Eyelets (2 Ea.), Tube Quick-Drying Glue (1 Ea)	2.2 lbs. (1.00 kg)
56116	Fiberglass Fish Tape Replacement Eyelets	—	1 oz. (27 g)
56120	Fiberglass Fish Tape Replacement Leaders	—	1.8 oz. (50 g)

*When compared to published price of Klein Tools fiberglass fish tapes.



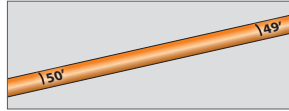


Fish Tapes

Fiberglass Fish Tapes

Additional Features:

- Designed for flexibility and easy navigation through conduit runs
- Non-conductive, fiberglass fish tape slides easily over existing wires and through multiple bends
- Durable 7" (179 mm) leader helps push through crowded conduit
- The lightweight and strong fiberglass composite tape resists harsh elements and is strength rated up to 500 pulling pounds
- Repair kit (Cat. No. 56115) available to replace tips
- Replacement metal eyelets (Cat. No. 56116) and spiral steel leaders (Cat. No. 56120) available



1' permanent laser etched descending increments.



56010

Cat. No.	Tape Size	Reel Diameter	Weight
56009	50 ft. L x 3/16" W (7" Leader) (15.2 m L x 4.8 mm W [177.8 mm Leader])	13" (330.2 mm)	2.8 lbs. (1.27 kg)
56010	100 ft. L x 3/16" W (7" leader) (30.5 m L x 4.8 mm W [177.8 mm Leader])	13" (330.2 mm)	3.5 lbs. (1.59 kg)
56014	200 ft. L x 3/16" W (7" Leader) (60.96 m L x 4.8 mm W [177.8 mm Leader])	17" (431.8 mm)	6.2 lbs. (2.81 kg)

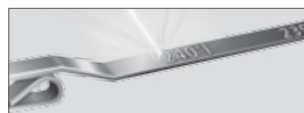
Replacement Tapes

Cat. No.	Description	Included	Weight
56115	Fiberglass Fish Tape Repair Kit	(1) High Leverage Crimper, (2) 7" (177.8 mm) Flexible Leaders, (2) Eyelets, (1) Tube Quick-Drying Glue	2.2 lbs. (1.00 kg)
56116	Fiberglass Fish Tape Replacement Eyelets	—	1 oz. (27 g)
56120	Fiberglass Fish Tape Replacement Leaders	—	1.8 oz. (50 g)

1/8" (3 mm) Wide Steel Fish Tapes

Additional Features:

- High strength spring steel fish tapes are stiff for long runs and are great for heavy duty wire pulls
- Full grip style handle gives you a firm, steady grip as you pull tape from the case
- Stainless Steel fish tape (Cat. Nos. 56007, 56008) is corrosion resistant and extends the life of the tool



1' permanent laser etched descending increments.



56001

Cat. No.	Tape Size	Reel Diameter	Weight
Stainless Steel for Corrosion Resistance			
56007	125' L x 1/8" W x 0.062" H (38.1 m L x 3.2 mm W x 1.57 mm H)	13" (330.2 mm)	4.7 lbs. (2.13 kg)
56008	240 ft. L x 1/8" W x 0.062" H (73.2 m L x 3.2 mm W x 1.57 mm H)	13" (330.2 mm)	7.5 lbs. (3.40 kg)

Flat Steel

56000	25 ft. L x 1/8" W x 0.045" H (7.6 m L x 3.2 mm W x 1.14 mm H)	7" (177.8 mm)	1.0 lbs. (0.45 kg)
56001	50 ft. L x 1/8" W x 0.045" H (15.2 m L x 3.2 mm W x 1.14 mm H)	7" (177.8 mm)	1.3 lbs. (0.59 kg)
56002	65 ft. L x 1/8" W x 0.062" H (19.8 m L x 3.2 mm W x 1.57 mm H)	9" (228.6 mm)	2.6 lbs. (1.18 kg)
56003	125' L x 1/8" W x 0.062" H (38.1 m L x 3.2 mm W x 1.57 mm H)	13" (330.2 mm)	4.7 lbs. (2.13 kg)
56004	240 ft. L x 1/8" W x 0.062" H (73.2 m L x 3.2 mm W x 1.57 mm H)	13" (330.2 mm)	7.5 lbs. (3.40 kg)

Replacement Tapes

56065	65 ft. L x 1/8" W x 0.062" H (19.8 m L x 3.2 mm W x 1.57 mm H)	—	1.7 lbs. (0.77 kg)
56125	125 ft. L x 1/8" W x 0.062" H (38.1 m L x 3.2 mm W x 1.57 mm H)	—	3.3 lbs. (1.50 kg)
56240	240 ft. L x 1/8" W x 0.062" H (73.2 m L x 3.2 mm W x 1.57 mm H)	—	6.1 lbs. (2.77 kg)

See page 310 for additional information on warnings.



WARNING: Never remove screws while fish tape is coiled inside reel.

Fish Tapes

1/4" (6 mm) Wide Steel Fish Tapes

Additional Features:

- Tempered, high quality tape keeps its stability as it glides between surfaces for effective pushing and pulling of wire under carpets, through insulated walls and over suspended ceilings
- 25' length with no snag tip, is perfect for short wire runs associated with light commercial, residential and voice-data-video-audio installations (Cat. No. 56005)



56005 has a no snag plastic tip



1' permanent laser etched descending increments.



56005

Cat. No.	Tape Size	Reel Diameter	Weight
56005	25 ft. L x 1/4" W x 0.030" H (7.6 m L x 6.4 mm W x 0.76mm H)	7" (177.8 mm)	1.1 lbs. (0.50 kg)
56006	100' L x 1/4" W x 0.062" H (30.5 m L x 6.4 mm W x 1.57 mm H)	13" (330.2 mm)	6.8 lbs. (3.08 kg)

Spiral Steel Fish Tapes

Additional Features:

- Designed for super flexibility and easy navigation through conduit runs
- Slides easily over existing wires and through multiple bends
- The durable spiral steel tape construction yields a maximum pulling force of up to 250 lbs.
- Replacement metal eyelets (Cat. No. 56116) and spiral steel leaders (Cat. No. 56120) available



56013

Cat. No.	Tape Size	Reel Diameter	Weight
56013	50 ft. L x 3/16" W (15.2 m L x 4.8 mm W)	13" (330.2 mm)	5.1 lbs. (2.31 kg)

Replacement Parts and Kits

Cat. No.	Description	Length	Weight
56116	Fiberglass Fish Tape Replacement Eyelets	1-1/2" (38.1 mm)	1 oz. (27 g)
56120	Fiberglass Fish Tape Replacement Leaders	8-15/16" (227.0 mm)	1.8 oz. (50 g)

Fish Tape Accessories

Fiberglass Fish Tape Repair Kit

- Contains high leverage ratcheting crimper, two replacement eyelets, two 7" (179 mm) replacement leaders, one tube of quick dry glue and comprehensive instructions
- Multi-function ratcheting crimper (Cat. No. 56115V) cuts tape cleanly, strips tapes and crimps on new attachments
- Newly crimped on eyelets meet or exceed original factory pulling strength requirements
- Protective carry case firmly holds all tools and additional parts in handy, organized compartments
- Cat. No. 56025 is for repairing non-conductive fiberglass fish tapes



56115

Cat. No.	Included	Weight
56115	(1) High Leverage Crimper, (2) 7" (177.8 mm) Flexible Leaders, (2) Eyelets, (1) Tube Quick-Drying Glue	2.2 lbs. (1.00 kg)
56025	Non-Conductive Eyelets (2 Ea.), Tube Quick-Drying Glue (1 Ea)	2.2 lbs. (1.00 kg)





Fish Tape Accessories

2-Pack 7" (179 mm) Replacement Flexible Leaders & 6-Pack Replacement Eyelets

- For use only with fiberglass fish tapes (Cat. No. 56009, 56010 & 56014)
- Attach with Klein Tools ratcheting crimper (Cat. No. 56115V) available in kit 56115 only

Cat. No.	Length	Weight
56120	8-15/16" (227.0 mm)	1.8 oz. (50 g)
56116	1-1/2" (38.1 mm)	1 oz. (27 g)



56120



56116

13" (330 mm) Flexible Leader for Steel Fish Tapes

- For use with 1/8" (3 mm) wide steel fish tapes
- Heavy duty construction is strength rated up to 250 pulling pounds
- High capacity eyelet holds up to five #12 unstripped wires and seven #10 bare wires
- Retrofit instructions included
- The 3/16" (5 mm) diameter tape has a rustproof inner steel cable core wrapped with a spiral cover for exceptional flexibility
- Flexible leader guides steel tapes through 90° bends and makes pulling and pushing flat steel tapes easier

Cat. No.	Diameter	Length	Weight
50350	3/16" (4.8 mm)	13-1/2" (342.9 mm)	1.6 oz. (45 g)



50350

6 Loop Wire Pulling Leader

- Save time by attaching leader to the end of a fish tape and pull up to six wires at once
- Braided steel construction provides up to 450 lbs. pull strength on main eyelet
- Flexible construction allows for easy navigation through multiple bends in conduit
- Staggered loop lengths won't overlap and clog pipe
- For use with 1/8" and 1/4" (3 mm and 6 mm) flat steel fish tapes

Cat. No.	Length	Weight
56107	11-1/4" (285.8 mm)	3.2 oz. (91 g)



56107

Steel Fish Tape Swivel Eyelet

- For use with 1/8" (6 mm) wide steel fish tapes
- Swivel head design helps prevent kinks and allows smoother, easier fishing in tight turns
- High capacity eyelet holds up to five #12 unstripped wires or seven #10 bare wires
- High strength steel construction allows for optimal performance over repeated uses
- Retrofit instructions included

Cat. No.	Diameter	Length	Weight
50351	3/16" (4.8 mm)	1-1/2" (38.1 mm)	0.5 oz. (14 g)



50351



Fish Rods & Accessories



Exclusive Splinter Guard™ protection from painful fiberglass splinters
Rods have threaded beveled connectors to attach to desired length and prevent snagging on obstructions

LO flex – long, straight feeding
HIGH flex – tight bends in walls
MID flex – all needs in between

Luminescent glow rods provide added visibility in dark work spaces

Shines 2X brighter and lasts 2X longer than ordinary glow rods



Fish and Glow Rods

Additional Features:

- Variety of flexibilities and lengths for any application such as walls, drop ceilings, attics, crawl spaces, etc.
- Sets include bull nose and hook attachments to attach and grab wires
- Cat. No. 56430 also includes illuminated tip



Cat. No.	Description	Included	Diameter	Overall Length	Weight
Fish Rods					
56312	12' (3.7 m) Lo-Flex Fish Rod Set	(3) 1/4" (6.4 mm) Diameter 4' (1.2 m) Fish Rods with Bullet Nose and Hook Attachments	1/4" (6.4 mm)	12 ft. (3.7 m)	1.1 lbs. (0.50 kg)
56324	24' (7.3 m) Lo-Flex Fish Rod Set	(4) 1/4" Diameter 6' (1.5 m) Fish Rods with Bullet Nose and Hook Attachments	1/4" (6.4 mm)	24' (7.3 m)	1.9 lbs. (0.86 kg)
56325	25' (7.6 m) Fish and Glow Rod Set	(5) 1/4" 1/4" (6.4 mm) Diameter 4' Diameter 4' (1.2 m) Fish Rods, Fish Rods, (1) 3/16" 3/16" (4.8 mm) Diameter 5'	1/4" to 3/16" (6.4 to 4.8 mm)	25 ft. (7.6 m)	1.8 lbs. (0.82 kg)
Glow Rods					
56406	6' (1.8 m) Hi-Flex Glow Rod		5/32" (4.0 mm)	6 ft. (1.8 m)	3.2 oz. (91 g)
56409	9' (2.7 m) Mid-Flex Glow Rod Set	(6) 3/16" (4.76 mm) Diameter 18" (457.2 mm) Glow Rods with Bullet Nose and Hook Attachments	3/16" (4.8 mm)	9 ft. (2.7 m)	8.8 oz. (249 g)
56415	15' (4.6 m) Mid-Flex Glow Rod Set	(3) 3/16" (4.8 mm) Diameter 5' (1.5 m) Glow Rods with Bullet Nose and Hook Attachments	3/16" (4.8 mm)	15 ft. (4.6 m)	13.6 oz. (386 g)
56418	18' (5.5 m) Hi-Flex Glow Rod Set	(3) 5/32" (4 mm) Diameter 6' (1.8 m) Glow Rods with Bullet Nose and Hook Attachments	5/32" (4.0 mm)	18 ft. (5.5 m)	13.6 oz. (386 g)
56430	30' Glow Rod Set	(6) 3/15" (4.7 mm) Diameter x 5' (1.5 m) Glow Rods with Bullet Nose, Hook, and LED-Illuminated Tip Attachments	3/16" (4.8 mm)	30 ft. (9.1 m)	1.2 lbs. (0.54 kg)

Deluxe Fish and Glow Rod Kit

- Heavy-duty storage case with fitted pockets and straps for organization
- Large handles fit over the shoulder for easy transport
- Convenient zipper pocket for accessory storage



Cat. No.	Included	Overall Length	Weight
56326	(2) 1/4" (6.4 mm) Diameter 6 ft. (1.8 m) Lo-Flex and (2) 1/4" (6.4 mm) Diameter 4 ft. (1.2 m) Lo-Flex Fish Rods, (3) 3/16" (4.8 mm) Diameter 5 ft. (1.5 m) Mid-Flex Glow Rods, (3) 5/32" (4 mm) Diameter 6 ft. (1.8 m) Hi-Flex Glow Rods, (1) Hook, (1) Bullet Nose, and (1) Carrying Case	75" (1905.0 mm)	3.8 lbs. (1.72 kg)

Illuminated Fish Rod Tip

- Lights up for maximum visibility in dark spaces
- Bright white, omni-directional LED light for long life
- Threaded top for hook or bullet nose attachment (not included)
- Fits drilled holes as small as 5/8" (16 mm)
- Compatible with Lo, Mid and High flex rods
- Replaceable batteries included
- U.S. Pat. No. 9,062,834



56119

Cat. No.	Description	Dimensions	Weight
56119	Illuminated Fish Rod Tip	2.5" L x 37/64" Diameter (63.5 mm L x 14.7 mm Diameter)	5.0 oz. (142 g)

Fish Rod Accessories

- Attachments help guide, grab, attach and steer wire or cable
- Compatible with Lo, Mid and High flex rods



56104

Cat. No.	Description	Included	Weight
56104	3 Piece Fish and Glow Rod Attachment Set	(1) Whisk Attachment (1) Bullet Nose Attachment (1) Hook Attachment	0.2 oz. (5.7 g)





Wire Pulling Tools

WireSpanner™ - Telescopic Pole 18'

SUPER ROD® SERIES



- Extends to 18' (5.4 m) in 10 seconds
- Easily retrieve cable from a distance without needing an extra pair of hands to shorten installation time
- Large hook attachment pulls multiple wires easily
- Friction-twist lock pole design stays locked in place
- Lightweight resin slides easily over obstructions
- Compact design retracts to 32" (813 mm) for easy storage

SRS56036

Cat. No.	Compact Length	Extended Length	Weight
SRS56036	32" (812.8 mm)	18 ft. (5.5 m)	2.8 lbs. (1.27 kg)

Polymer Fish Rod Set with Glow-in-the-Dark Leaders

SUPER ROD® SERIES

- Non-conductive rods designed for working in confined spaces
- Great for routing cables in wire racks and on short runs
- Attachments glow in the dark for ease of use
- Includes 14" (356 mm) rods of various flexibilities and illumination for a range of individual (or 56" (1.4 m) combined) wire pulling applications
- Includes five Glow-in-the-Dark leaders (hook, bullet, mini-eyelet, domed-eyelet and claw)
- Convenient storage tube protects the rods between use and fits easily into your bag or toolbox



SRS56038

5 Attachments Included



Hook Bullet Mini-Eyelet Domed-Eyelet Claw

Cat. No.	Extended Length	Weight
SRS56038	56" (1.4 m)	4.0 oz. (113 g)

Magnetic Wire Pulling System

- This system allows you to effortlessly pull cable behind walls by yourself
- Navigates through insulation and other obstructions
- Perfect for routing cable between drywall and insulation or fixture installations
- Swivel leader eyelet securely connects to most wires and mesh wire pulling grips
- Non-marring nylon leader-pull with 20' (6.1 m) of heavy-duty nylon rope eyelet for wire tie-on



SRS56037

Cat. No.	Length	Weight
SRS56037	20 ft. (6.1 m)	6.4 oz. (181 g)



Wire Pulling Lubricant

Wire Pulling Foam Lubricant

- **NO DRIPS! NO STAINS! NO MESS!**
- One can equals one gallon or 4 quarts of wax/gel lubricants*
- Foam lubricant is applied directly into the conduit. No need to pre-coat wires
- No mess formula stays where it is applied, even in vertical conduit
- Dissolves clean from hands and clothing



Cat. No.	Description	Weight
51100	Wire Pulling Foam Lubricant	1.2 lbs. (0.54 kg)

*Based on job site pulls with foam in 3/4" conduit when used as directed.



51100

⚠ WARNING:

- Contents under pressure. Do not expose container to direct sunlight or temperatures above 120°F. Do not transport or store near heat sources. Keep cans dry and away from sources of ignition. If frozen, gradually warm to room temperature.
- Do not use wet product on live circuits. Compound is electrically conductive before it dries.

See page 310 for additional information on warnings.



Wire Pulling Lubricant

One-Quart Premium Synthetic Clear™

- Designed for use primarily in finished workspaces (i.e. around painted walls and carpeted floors)
- The crystal clear formulation is easy to clean-up and will not stain
- Excellent all purpose lubricant for electrical or datacom applications
- Compatible with most types of cable jackets
- Will not separate out in hot environments for when exposed to freezing temperatures

Cat. No.	Size	Container	Temperature Range	Weight
51028	1 Quart (0.9 L)	Squeeze Bottle	20° F to 122° F (-6° C to 50° C)	2.3 lbs. (1.04 kg)

US LISTED
Wire Pulling Lubricant 842F



51028

Premium Synthetic Wax™

- High performance lubricant for general electrical and utility applications
- Temperature stable and does not liquify and drop off after high temperature exposure
- Compatible with most types of cable, including low density polyethylene
- Superior "clingability" coats wires and conduit evenly
- Exceptional lubricity
- Non-staining, slow-drying, easy clean-up formula

US LISTED
Wire Pulling Lubricant 842F

Cat. No.	Size	Container	Temperature Range	Weight
51010	1 Quart (0.9 L)	Squeeze Bottle	20° F to 122° F (-6° C to 50° C)	2.3 lbs. (1.04 kg)
51012	1 Gallon (3.8 L)	Bucket	20° F to 122° F (-6° C to 50° C)	8.8 lbs. (3.99 kg)
51013	5 Gallon (18.9 L)	Bucket	20° F to 122° F (-6° C to 50° C)	44.0 lbs. (19.96 kg)
56117	1 Quart (0.9 L)	Squeeze Bottle - 6 Pack	20° F to 122° F (-6° C to 50° C)	13.5 lbs. (6.12 kg)



51010



51012

Premium Synthetic Polymer™

- Excellent all-purpose lubricant for electrical, telecommunications and data applications
- Easy-to-apply gel evenly clings instantly to the cable for easy handling and application
- Compatible with most types of cable, including polyethylene and semi conducting jackets
- Superior "clingability" coats wires and conduit evenly
- Non-staining, slow-drying, easy clean-up formula

US LISTED
CERTIFIED TO CSA
STANDARD C22.2 NO. 249-96

Cat. No.	Size	Container	Temperature Range	Weight
51015	1 Quart (0.9 L)	Squeeze Bottle	20° F to 140° F (-6° C to 60° C)	2.3 lbs. (1.04 kg)
51017	1 Gallon (3.8 L)	Bucket	20° F to 140° F (-6° C to 60° C)	8.8 lbs. (3.99 kg)
51018	5 Gallon (18.9 L)	Bucket	20° F to 140° F (-6° C to 60° C)	44.0 lbs. (19.96 kg)



51015



51017

Wire Pulling Supplies

Poly Pull Line

- Use polypropylene line with manual or power fishing systems for light duty cable or rope pulling applications
- Ready to use storage containers quickly dispense a tangle free line and also protects line from direct sunlight
- Line is resistant to rot and mildew
- Up to 210 lbs. (95.2 kg) average breaking strength

Cat. No.	Description	Container	Weight
56108	Poly Pull Line with Orange Tracer 500'	One-Quart Size w/Locking Lid	1.0 lbs. (0.45 kg)
56110	Poly Pull Line with Orange Tracer 6500'	Five-Gallon Bucket	11.0 lbs. (4.99 kg)



56108



56110



Conduit Tools

Conduit Locknut Wrench

- Easily attach locknuts in tight or deep cut-in boxes
- For 1/2" and 3/4" connectors
- Direct-drive heads rotate each other when twisted
- Heavy-duty steel construction enables needed torque to loosen or tighten connectors
- Perfect for remodel work where box is filled with existing wires



56999



US Patent pending

Cat. No.	Fitting Size	Overall Length	Weight
56999	1/2" and 3/4"	9" (228.6 mm)	11.2 oz. (318 g)

High-Leverage Side-Cutting Pliers - Fish Tape Pulling

Additional Features:

- Easily pulls 1/8" or 1/4" flat steel fish tape without damaging the tape
- High-leverage design. Rivet is closer to the cutting edge for 46% greater cutting and gripping power than other pliers designs
- Streamlined design
- Cat. No. J2000-9NECRTP crimps non-insulated connectors, lugs, and terminals



D213-9NETP

Cat. No.	Nose Type	Overall Length	Jaw Length	Jaw Width	Jaw Thickness	Knife Length	Handle Finish	Handle Color	Weight
D213-9NETP	New England	9-3/8" (238.1 mm)	1-19/32" (40.5 mm)	1-1/4" (31.8 mm)	5/8" (15.9 mm)	25/32" (19.8 mm)	Plastic-Dipped	Dark Blue	1.1 lbs. (0.50 kg)
Journeyman™ Series – Dual-material handles									
J213-9NETP	New England	9-1/2" (241.3 mm)	1-19/32" (40.5 mm)	1-1/4" (31.8 mm)	5/8" (15.9 mm)	25/32" (19.8 mm)	Journeyman	Dark Blue/Black	1.1 lbs. (0.50 kg)
2000 Series* – Heavy-duty cutting knives									
D2000-9NETP	New England	9-3/8" (238.1 mm)	1-19/32" (40.5 mm)	1-1/4" (31.8 mm)	5/8" (15.9 mm)	25/32" (19.8 mm)	Plastic-Dipped	Royal Blue	1.1 lbs. (0.50 kg)
Journeyman™ 2000 Series* – Dual-material handles									
J2000-9NETP	New England	9-1/2" (241.3 mm)	1-19/32" (40.5 mm)	1-1/4" (31.8 mm)	5/8" (15.9 mm)	25/32" (19.8 mm)	Journeyman	Light Blue/Black	1.1 lbs. (0.50 kg)
J2000-9NECRTP	New England	9-1/2" (241.3 mm)	1-19/32" (40.5 mm)	1-1/4" (31.8 mm)	5/8" (15.9 mm)	25/32" (19.8 mm)	Journeyman	Blue/Black	1.1 lbs. (0.50 kg)

*Cuts ACSR, screws, nails, and most hardened wire. Features combination polished and black-oxide finish.

Conduit Locknut and Reaming Pliers

- Tightens 1/2" (13 mm) and 3/4" (19 mm) EMT or 1/2" (13 mm) rigid locknuts
- Fits liquid tight fittings and caps
- Reams and deburrs both inside and outside of conduit
- Knurled jaws at nose tip pull wire or fish tape
- Machined nose fits snugly into locknut wings



D333-8

Cat. No.	Overall Length	Jaw Length	Jaw Width	Jaw Thickness	Point Thickness	Handle Finish	Handle Color	Weight
D333-8	7-3/4" (196.9 mm)	1-5/8" (41.3 mm)	15/16" (23.8 mm)	1/2" (12.7 mm)	3/16" (4.8 mm)	Plastic-Dipped	Yellow	8.8 oz. (249 g)

Conduit-Fitting and Reaming Screwdriver

- Hooded-blade design keeps tip from slipping out of screws, especially when tightening hard-to-reach conduit fittings. Thicker hood is designed for rugged use
- Reams and smooths 1/2" (13 mm), 3/4" (19 mm), and 1" (25 mm) thin-wall conduit ends to protect wire and permit correct installation of fittings
- Reams both the inside and outside of the conduit at the same time
- Longer Cushion-Grip handle provides comfort and more torque for reaming
- Replaceable reaming blade is now held in place with a 1/6" (1.5 mm) set screw



85191

Cat. No.	Tip Size	Shank Length	Overall Length	Weight
85191	5/16" (7.9 mm)	2-1/2" (63.5 mm)	7-1/2" (190.5 mm)	8.0 oz. (227 g)
19353	Conduit Reamer Replacement Blade			0.16 oz. (4.5 g)

See page 310 for additional information on warnings.



Conduit Benders

Exclusive design reduces rippling and ovaling of conduit

The traditional Benfield® head design

accurately and consistently performs common bends such as Stub Ups, Offsets, Back-to-Back and Saddle Bends

Wide foot pedal provides excellent stability, leverage and comfort

Interior clamp securely holds conduit while cutting with hacksaw

Interior hook surface prevents conduit from rolling or twisting during bends

Easily visible arrow for ease of alignment on conduit marks

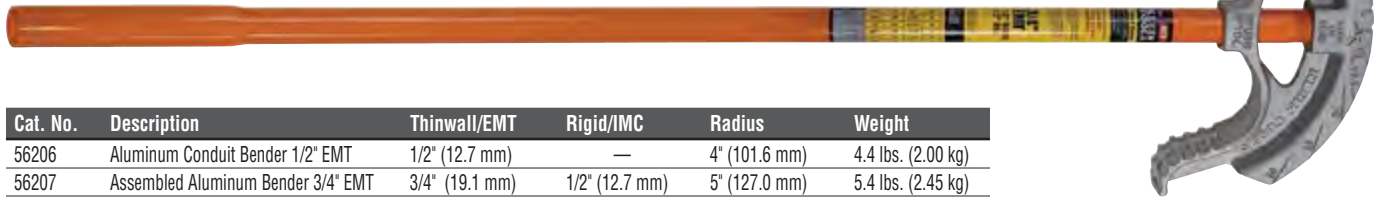
Bold cast-in symbols, degree scales, multiplier scales and center of bend marks help save time on the job



Aluminum Conduit Benders

Additional Features:

- Lightweight die-cast aluminum construction
- Both Cat. Nos. 56206 and 56207 come assembled with #51427 handle



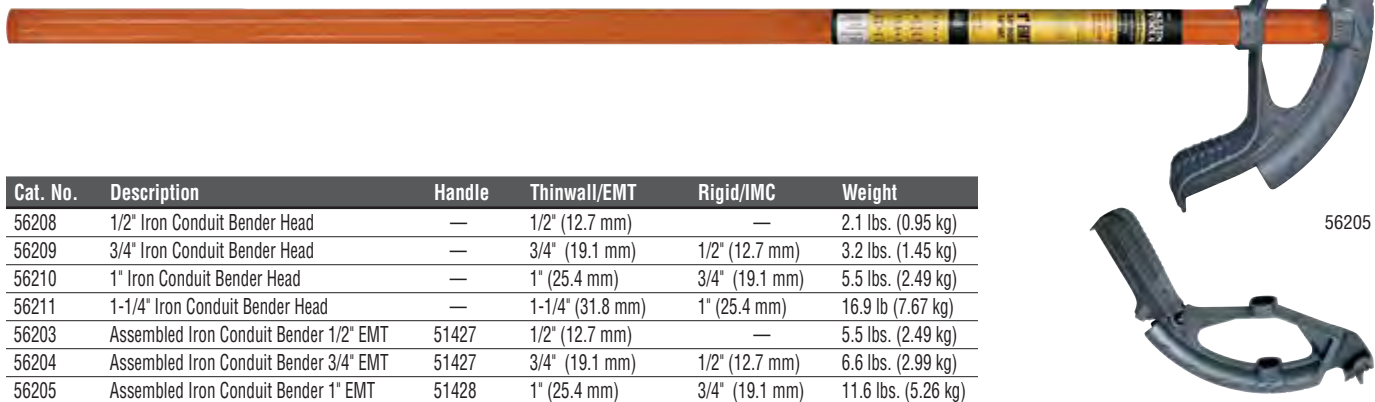
56207

Cat. No.	Description	Thinwall/EMT	Rigid/IMC	Radius	Weight
56206	Aluminum Conduit Bender 1/2" EMT	1/2" (12.7 mm)	—	4" (101.6 mm)	4.4 lbs. (2.00 kg)
56207	Assembled Aluminum Bender 3/4" EMT	3/4" (19.1 mm)	1/2" (12.7 mm)	5" (127.0 mm)	5.4 lbs. (2.45 kg)

Iron Conduit Benders

Additional Features:

- High strength steel handle features a swaged end for inserting conduit to correct overbends (Cat. Nos. 56203 & 56204 only)
- Bright orange color handle is easy to spot on the jobsite



56205

56211

Cat. No.	Description	Handle	Thinwall/EMT	Rigid/IMC	Weight
56208	1/2" Iron Conduit Bender Head	—	1/2" (12.7 mm)	—	2.1 lbs. (0.95 kg)
56209	3/4" Iron Conduit Bender Head	—	3/4" (19.1 mm)	1/2" (12.7 mm)	3.2 lbs. (1.45 kg)
56210	1" Iron Conduit Bender Head	—	1" (25.4 mm)	3/4" (19.1 mm)	5.5 lbs. (2.49 kg)
56211	1-1/4" Iron Conduit Bender Head	—	1-1/4" (31.8 mm)	1" (25.4 mm)	16.9 lb (7.67 kg)
56203	Assembled Iron Conduit Bender 1/2" EMT	51427	1/2" (12.7 mm)	—	5.5 lbs. (2.49 kg)
56204	Assembled Iron Conduit Bender 3/4" EMT	51427	3/4" (19.1 mm)	1/2" (12.7 mm)	6.6 lbs. (2.99 kg)
56205	Assembled Iron Conduit Bender 1" EMT	51428	1" (25.4 mm)	3/4" (19.1 mm)	11.6 lbs. (5.26 kg)





Conduit Bender Handles

Bender Handles



- Available in multiple sizes and lengths and are compatible with all Klein Tools conduit bender heads
- High-strength steel eliminates flex and provides excellent feel, control and leverage
- Handle features an enlarged diameter hollow end for inserting conduit to correct overbends (Cat. No. 51427)
- Bright orange color is easy to spot on the jobsite



51427

Cat. No.	Description	Item	NPT Tap Size	Length	Fits	For Use With	Weight
51427	Conduit Bender Handle for 1/2", 3/4"	Conduit Bender Handle	3/4" (19.1 mm)	38" (965.2 mm)	1/2" and 3/4" Bender Heads	56208 and 56209	3.5 lbs. (1.59 kg)
51428	Conduit Bender Handle for 1" Heads	Conduit Bender Handle	1" (25.4 mm)	44" (1117.6 mm)	1" Bender Head	56210	6.0 lbs. (2.72 kg)
51429	Conduit Bender Handle for 1-1/4" Heads	Conduit Bender Handle	1-1/4"	54" (1371.6 mm)	1-1/4" Bender Head	56211	8.9 lbs. (4.04 kg)

Armored Cable Cutter

BX and Armored Cable Cutter

- Cuts BX and 3/8" armored cable
- Eliminates burrs
- Does not nick cable
- Easily cuts 3/8" flexible conduit and #10, 12, and 14 armored cables with up to 4 wires with a couple of turns of the handle
- Depth of cut adjusts between standard MC and reduced diameter MC
- Extra blade storage in handle
- Use with Klein Tools replacement blade Cat. No. 53726-SEN



53725

Cat. No.	Length	Weight
53725	7-1/4" (184.2 mm)	2.0 lbs. (0.91 kg)

Replacement Parts

Cat. No.	Description	For Use With	Weight
53726SEN	BX Cutter Replacement Blade	Klein Tools Cable Cutter 53725	1.6 oz. (45 g)

Conduit Scoring Tool

Electrician's Conduit Scoring Tool

- Durable zinc cast scoring tool eliminates spiraling
- Used for scoring 1/2", 3/4" and 1" EMT conduit
- Klein-designed, patented scoring wheel scores and allows clean conduit snaps without leaving burrs inside
- 1" scoring wheel conveniently located in base of the handle; no tools required to replace scoring wheels
- Four roller tracks specifically designed for professional use
- Compact, enclosed design for use on job sites



88906

Cat. No.	Length	Conduit Diameter	Weight
88906	6" (152.4 mm)	Scores 1/2", 3/4" and 1" (12.7 mm, 19.1 mm and 25.4 mm) EMT Conduit	1.3 lbs. (0.59 kg)

Replacement Parts

Cat. No.	Description	Weight
88907	1/2", 3/4" EMT Replacement Scoring Wheel	0.3 oz. (8.5 g)
88908	1" EMT Replacement Scoring Wheel	0.3 oz. (8.5 g)



PVC-Cutters

PVC-Cutter

- Cuts up to 3/4" schedule 40 PVC
- Makes clean burr-free cuts in PVC and flexible pipe
- Reversible blade doubles life
- Cuts 1-3/8" outer diameter flexible plastic pipe
- Steel construction for strength
- Guide helps cut pipe squarely
- Handle latch keeps tool closed



50506-SEN

Cat. No.	PVC Cutting Capacity	Non-metallic Tubing Cutting Capacity	Length	Weight
50506SEN	3/4" (19.1 mm) Schedule 40	1" (25.4 mm)	8-1/2" (215.9 mm)	1.0 lbs. (0.45 kg)
Replacement Parts				
Cat. No.	Description	Length	Weight	
50549	Replacement Blade for Cat. No. 50506	3-1/4" (82.6 mm)	1.3 oz. (37 g)	



50549

Ratcheting PVC-Cutters

- Provide straight cuts 1/2"-2" I.D. (13 mm-51 mm) O.D. 5/8" - 2-1/2" (16 mm-64 mm) of white and gray schedule 40 and 80 PVC
- Quick, one-handed blade release
- Ratchet action allows easy, one-hand cutting
- No tools required for instant blade change
- Replacement blade and pin available



50031

Cat. No.	PVC Cutting Capacity	Length	Weight
50031	O.D. 5/8" to 1-5/8" (15.9 to 41.3 mm); I.D. 1/2" to 1-1/4" (12.7 to 31.8 mm)	9" (228.6 mm)	1.1 lbs. (0.50 kg)
50034	O.D. 5/8" to 2-1/2" (15.9 to 63.5 mm); I.D. 1/2" to 2" (12.7 to 50.8 mm)	11" (279.4 mm)	1.3 lbs. (0.59 kg)
Replacement Parts			
Cat. No.	Description	Length	Weight
50032	Blade for Ratcheting PVC Cutter	4" (101.6 mm)	3.0 oz. (86 g)
50035	Blade for Large Capacity PVC Cutter	4" (101.6 mm)	3.0 oz. (86 g)
50033	Replacement Retaining Pin for PVC Cutter	2-3/8" (60.3 mm)	0.1 oz. (2.7 g)



50032

50033

WARNING: Do NOT cut cold PVC.

WARNING: Do NOT use to cut metallic pipes, cable or wire.

