

# FITTINGS FOR WET LOCATIONS



**RAINTIGHT. LIQUID TIGHT. DONE RIGHT.**



SCAN TO  
SEE FASTER  
WET LOCATION  
SOLUTIONS



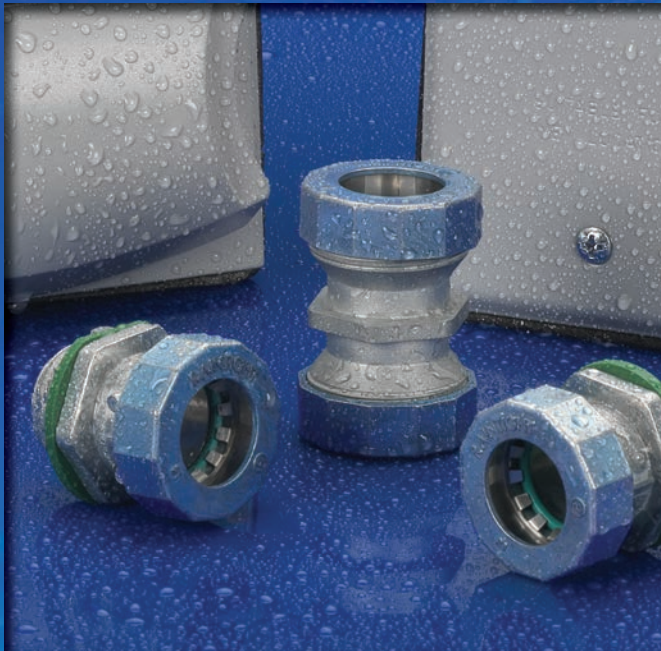
# WE ENGINEERED THE WATER OUT BY ENGINEERING THE QUALITY IN

## RAINTIGHT. LIQUID TIGHT. IN ALL THE SIZES AND CONFIGURATIONS YOU NEED.

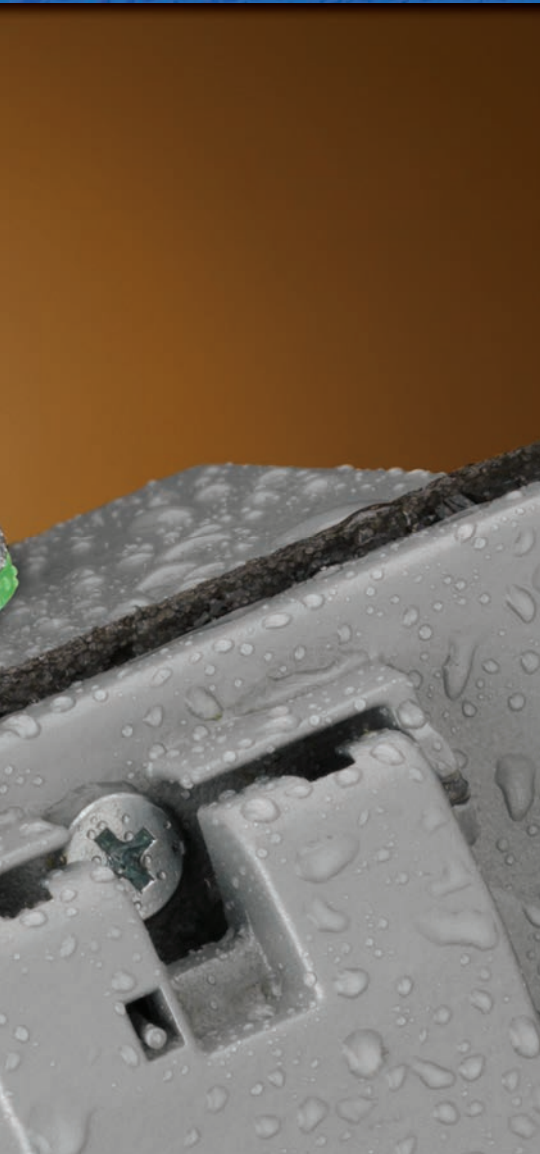
Whatever the size and whatever the configuration, Bridgeport has the solution. You can get Bridgeport innovations for cable, EMT and rigid conduit, with more choices in 1/2" to 4" trade sizes. Our separate sealing rings ensure a raintight seal and split-type compression rings make for fast, reliable installation. With Bridgeport UL-Listed raintight fittings, you can meet any code and fill any specification. Bridgeport quality shines on even the rainiest days.



FOR MORE INFORMATION, VISIT: [WWW.BPTFITTINGS.COM](http://WWW.BPTFITTINGS.COM)







## NEC® REQUIREMENTS

The National Electrical Code® (NEC) provides requirements and recommendations that govern this country's wiring practices and electrical installations. NEC articles and sections that detail the use of conduit and cable products in a wet location are listed below.

NFPA 70®, *National Electrical Code®* and *NEC®* are registered trademarks of the National Fire Protection Association, Quincy, MA.

### NEC Articles

**358.42 Couplings and Connectors** used with EMT shall be made up tight. Where buried in masonry or concrete, they shall be concretetight type. They shall be listed for use in wet locations and comply with Article **314.15**.

**344.42 Couplings and Connectors.** (A) Threadless couplings and connectors used with conduit shall be made tight. Where buried in masonry or concrete, they shall be the concretetight type. Where installed in wet locations, they shall comply with **314.15**. Threadless couplings and connectors shall not be used on threaded conduit ends unless listed for the purpose.

**314.15 Damp or Wet Locations.** In Damp or Wet Locations boxes, conduit bodies, and fittings shall be placed or equipped so as to prevent moisture from entering or accumulating within the box, conduit body, or fitting. Boxes, conduit bodies, and fittings installed in wet locations shall be listed for use in wet locations.

**330.40 Boxes and Fittings.** Fittings used for connecting Type MC cable to boxes, cabinets, or other equipment shall be listed and identified for such use.

Reprinted with permission from NFPA 70®, *National Electrical Code®*, Copyright © 2007, National Fire Protection Association, Quincy, MA 02169. This reprinted material is not the complete and official position of the NFPA on the referenced subject, which is represented only by the standard in its entirety.

## UL REQUIREMENTS

Effective March 2002, UL implemented a specification revision that caused industry standard split ring compression connectors to be incapable of passing UL testing. Bridgeport solved this issue by developing a patented EMT raintight design and became the industry's first manufacturer to meet the more stringent UL follow-up test requirements, thereby ensuring their products consistently and effectively excluded water. This allowed Bridgeport to mark their fittings "Raintight."

Some manufacturers have elected to color code their raintight gland nuts for identification purposes. A few manufacturers, including Bridgeport, have chosen the color blue for their steel EMT raintight fittings. Exclusive to Bridgeport is the use of the color blue on their zinc EMT raintight fittings.

# FITTINGS FOR WET LOCATIONS



## Mighty-Seal® Raintight PUSH-EMT® Connectors ★ NEW

Connecting EMT has never been this fast and easy. Simply push the connectors onto the conduit for a raintight/wet location seal. Removable and reusable. Approximately 75% quicker to install than conventional fittings. Patented.

cULus File No. E24001

### Zinc Die Cast

Catalog Number	Trade Size	Unit Qty.	Std. Pkg.
250-MSRT	1/2"	25	250
251-MSRT	3/4"	25	250

### Zinc Die Cast / Insulated Throat - 105°C

Catalog Number	Trade Size	Unit Qty.	Std. Pkg.
250-MSRTI	1/2"	25	250
251-MSRTI	3/4"	25	250



## Zinc Die Cast / Insulated Throat - 90°C

Catalog Number	Trade Size	Unit Qty.	Std. Pkg.
250-RTI2US	1/2"	50	500
251-RTI2US	3/4"	25	250
252-RTI2	1"	15	150
253-RTI2	1 1/4"	10	100
254-RTI2	1 1/2"	10	40
255-RTI2	2"	---	10
256-RTI2	2 1/2"	---	12
257-RTI2	3"	---	12
258-RTI2*	3 1/2"	---	6
259-RTI2*	4"	---	6

\*Consult factory for availability.

## Raintight Compression Connectors

Compression style connectors with internal sealing ring and knockout gasket to create a raintight seal when connecting EMT to box or enclosure. Patented. cULus File No. E24001

### Zinc Die Cast

Catalog Number	Trade Size	Unit Qty.	Std. Pkg.
250-RT2	1/2"	50	500
251-RT2	3/4"	25	250

## Zinc Die Cast / Insulated Throat - 90°C

Catalog Number	Trade Size	Unit Qty.	Std. Pkg.
250-RTI2	1/2"	50	500
251-RTI2	3/4"	25	250

## Zinc Raintight Compression Couplings

Compression style couplings used to join two lengths of EMT. Internal sealing rings create a raintight seal. Patented.

cULus File No. E24001

### Zinc Die Cast

Catalog Number	Trade Size	Unit Qty.	Std. Pkg.
260-RT	1/2"	50	500
261-RT	3/4"	25	250



## Mighty-Seal® Raintight PUSH-EMT® Couplings ★ NEW

Connecting EMT has never been this fast and easy. Simply push the couplings onto the conduit for a raintight/wet location seal. Removable and reusable. Approximately 75% quicker to install than conventional fittings. Patented.

cULus File No. E24001

### Zinc Die Cast

Catalog Number	Trade Size	Unit Qty.	Std. Pkg.
260-MSRT	1/2"	25	250
261-MSRT	3/4"	25	250

## MADE IN THE USA Zinc Raintight Compression Connectors

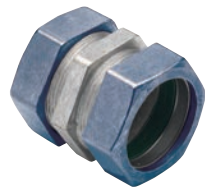
Compression style connectors with internal sealing ring and knockout gasket to create a raintight seal when connecting EMT to box or enclosure. Patented.

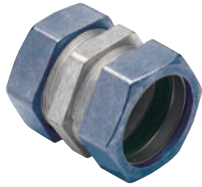
UL File No. E24001

### Zinc Die Cast

Catalog Number	Trade Size	Unit Qty.	Std. Pkg.
250-RT2US	1/2"	50	500
251-RT2US	3/4"	25	250
252-RT2	1"	15	150
253-RT2	1 1/4"	10	100
254-RT2	1 1/2"	10	40
255-RT2	2"	---	10
256-RT2	2 1/2"	---	12
257-RT2	3"	---	12
258-RT2*	3 1/2"	---	6
259-RT2*	4"	---	6

\*Consult factory for availability.





## MADE IN THE USA Zinc Raintight Compression Couplings

Compression style couplings used to join two lengths of EMT. Internal sealing rings create a raintight seal. Patented.

UL File No. E24001

### Zinc Die Cast

Catalog Number	Trade Size	Unit Qty.	Std. Pkg.
260-RTUS	1/2"	50	500
261-RTUS	3/4"	25	250
262-RT	1"	15	150
263-RT	1 1/4"	10	100
264-RT	1 1/2"	10	40
265-RT	2"	---	10
266-RT	2 1/2"	---	12
267-RT	3"	---	12
268-RT	3 1/2"	---	6
269-RT	4"	---	6



## Steel Raintight Compression Connectors

Compression type connectors with internal sealing ring and knockout gasket to create a raintight seal when connecting EMT to box or enclosure. Patented.

cULus File No. E24001

### Steel

Catalog Number	Trade Size	Unit Qty.	Std. Pkg.
250-SRT	1/2"	25	250
251-SRT	3/4"	25	250
252-SRT	1"	10	100
253-SRT	1 1/4"	---	25
254-SRT	1 1/2"	---	25
255-SRT	2"	---	10
256-SRT	2 1/2"	2	10
257-SRT	3"	2	10
258-SRT	3 1/2"	---	6
259-SRT	4"	---	6

### Steel / Insulated Throat - 105°C

Catalog Number	Trade Size	Unit Qty.	Std. Pkg.
250-SRTI	1/2"	25	250
251-SRTI	3/4"	25	250
252-SRTI	1"	10	100
253-SRTI	1 1/4"	---	25
254-SRTI	1 1/2"	---	25
255-SRTI	2"	---	10
256-SRTI	2 1/2"	2	10
257-SRTI	3"	2	10
258-SRTI	3 1/2"	---	6
259-SRTI	4"	---	6



## Steel Raintight Compression Couplings

Compression style couplings used to join two lengths of EMT. Internal sealing rings create a raintight seal. Concrete-tight/Raintight.

cULus File No. E24001 **Steel**

Catalog Number	Trade Size	Unit Qty.	Std. Pkg.
260-SRT	1/2"	25	250
261-SRT	3/4"	20	200
262-SRT	1"	10	100
263-SRT	1 1/4"	---	25
264-SRT	1 1/2"	---	25
265-SRT	2"	---	10
266-SRT	2 1/2"	2	10
267-SRT	3"	2	10
268-SRT	3 1/2"	---	6
269-SRT	4"	---	6



## Mighty-Merge® Raintight Combination Couplings



Couplings used to transition EMT to rigid for a secure raintight/wet location seal. Patented.

cETLus Listed

### Zinc Die Cast

Catalog Number	EMT Trade Size	Rigid Trade Size	Unit Qty.	Std. Pkg.
290-RT	1/2"	1/2"	25	100
291-RT	3/4"	3/4"	25	100
292-RT	1"	1"	10	50

# FITTINGS FOR WET LOCATIONS



## Liquid Tight Connectors, Straight

Straight connectors for use with metallic and nonmetallic "Type B" liquid tight conduit.

UL File No. E9391  
CSA File No. LR39354

### Zinc Die Cast

Catalog Number	Trade Size	Unit Qty.	Std. Pkg.
429-LT2	3/8"	25	100
430-LT2	1/2"	25	100
431-LT2	3/4"	10	50
432-LT2	1"	5	25
433-LT2	1 1/4"	5	20
434-LT2	1 1/2"	2	10
435-LT2	2"	2	20
436-LT2	2 1/2"	1	5
437-LT2	3"	1	5
438-LT2	3 1/2"	1	5
439-LT2	4"	1	5

### Zinc Die Cast / Insulated Throat - 105°C

Catalog Number	Trade Size	Unit Qty.	Std. Pkg.
429-LTI2	3/8"	25	100
430-LTI2	1/2"	25	100
431-LTI2	3/4"	10	50
432-LTI2	1"	5	25
433-LTI2	1 1/4"	5	20
434-LTI2	1 1/2"	2	10
435-LTI2	2"	2	20
436-LTI2	2 1/2"	1	5
437-LTI2	3"	1	5
438-LTI2	3 1/2"	1	5
439-LTI2	4"	1	5



## Malleable Iron

Catalog Number	Trade Size	Unit Qty.	Std. Pkg.
429-MLT	3/8"	25	100
430-MLT	1/2"	25	100
431-MLT	3/4"	10	50
432-MLT	1"	5	25
433-SLT	1 1/4"	5	20
434-SLT	1 1/2"	2	10
435-SLT	2"	2	20
436-SLT	2 1/2"	1	5
437-SLT	3"	1	5
438-SLT	3 1/2"	1	5
439-SLT	4"	1	5

## Malleable Iron / Insulated Throat – 105°C

Catalog Number	Trade Size	Unit Qty.	Std. Pkg.
429-MLTI	3/8"	25	100
430-MLTI	1/2"	25	100
431-MLTI	3/4"	10	50
432-MLTI	1"	5	25
433-SLTI	1 1/4"	5	20
434-SLTI	1 1/2"	2	10
435-SLTI	2"	2	20
436-SLTI	2 1/2"	1	5
437-SLTI	3"	1	5
438-SLTI	3 1/2"	1	5
439-SLTI	4"	1	5



## MADE IN THE USA Liquid Tight Connectors, Straight

Straight connectors for use with metallic liquid tight conduit. Zinc Electroplated.

UL File No. E9391

### Steel

Catalog Number	Trade Size	Unit Qty.	Std. Pkg.
429-SLTUS	3/8"	25	100
430-SLTUS	1/2"	25	100
431-SLTUS	3/4"	10	50
432-SLTUS	1"	5	25
433-SLTUS	1 1/4"	5	20
434-SLTUS	1 1/2"	2	10
435-SLTUS	2"	2	20
436-SLTUS	2 1/2"	1	5
437-SLTUS	3"	1	5
438-SLTUS	3 1/2"	1	5
439-SLTUS	4"	1	5

### Steel / Insulated Throat – 105°C

Catalog Number	Trade Size	Unit Qty.	Std. Pkg.
429-SLTIUS	3/8"	25	100
430-SLTIUS	1/2"	25	100
431-SLTIUS	3/4"	10	50
432-SLTIUS	1"	5	25
433-SLTIUS	1 1/4"	5	20
434-SLTIUS	1 1/2"	2	10
435-SLTIUS	2"	2	20
436-SLTIUS	2 1/2"	1	5
437-SLTIUS	3"	1	5
438-SLTIUS	3 1/2"	1	5
439-SLTIUS	4"	1	5



## Liquid Tight Connectors, Straight

Straight connectors for use with metallic liquid tight conduit.

cULus File No. E9391: 436-SLT thru 439-SLT  
cULus File No. E9391: 429-MLT thru 432-MLT  
cULus File No. E9391: 429-MLTI thru 432-MLTI  
UL File No. E9391: Steel and 436-SLTI thru 439-SLTI  
CSA File No. LR39354: Steel

### Steel

Catalog Number	Trade Size	Unit Qty.	Std. Pkg.
429-SLT	3/8"	25	100
430-SLT	1/2"	25	100
431-SLT	3/4"	10	50
432-SLT	1"	5	25

### Steel / Insulated Throat - 105°C

Catalog Number	Trade Size	Unit Qty.	Std. Pkg.
429-SLTI	3/8"	25	100
430-SLTI	1/2"	25	100
431-SLTI	3/4"	10	50
432-SLTI	1"	5	25





### Liquid Tight Connectors with Grounding Lug, Straight

Straight liquid tight connectors with grounding lug for use with metallic liquid tight conduit.

UL File No. E9391

CSA File No. LR39354

#### Steel with Aluminum Lug

Catalog Number	Trade Size	Unit Qty.	Std. Pkg.
429-SLTG	3/8"	25	125
430-SLTG	1/2"	25	125
431-SLTG	3/4"	25	125
432-SLTG	1"	10	50
433-SLTG	1 1/4"	5	25
434-SLTG	1 1/2"	5	25
435-SLTG	2"	2	10

#### Steel with Aluminum Lug / Insulated Throat - 105°C

Catalog Number	Trade Size	Unit Qty.	Std. Pkg.
429-SLTIG	3/8"	25	125
430-SLTIG	1/2"	25	125
431-SLTIG	3/4"	25	125
432-SLTIG	1"	10	50
433-SLTIG	1 1/4"	5	25
434-SLTIG	1 1/2"	5	25
435-SLTIG	2"	2	10

### Liquid Tight Connectors, 45°

45° connectors for use with metallic liquid tight conduit.

UL File No. E9391

CSA File No. LR39354

#### Malleable Iron

Catalog Number	Trade Size	Unit Qty.	Std. Pkg.
449-SLT	3/8"	25	100
450-SLT	1/2"	25	100
451-SLT	3/4"	10	50
452-SLT	1"	5	25
453-SLT	1 1/4"	5	25
454-SLT	1 1/2"	2	10
455-SLT	2"	1	5
456-SLT	2 1/2"	---	1
457-SLT	3"	---	1
458-SLT	3 1/2"	---	1
459-SLT	4"	---	1



### Malleable Iron / Insulated Throat - 105°C

Catalog Number	Trade Size	Unit Qty.	Std. Pkg.
449-SLTI	3/8"	25	100
450-SLTI	1/2"	25	100
451-SLTI	3/4"	10	50
452-SLTI	1"	5	25
453-SLTI	1 1/4"	5	25
454-SLTI	1 1/2"	2	10
455-SLTI	2"	1	5
456-SLTI	2 1/2"	---	1
457-SLTI	3"	---	1
458-SLTI	3 1/2"	---	1
459-SLTI	4"	---	1

### MADE IN THE USA Liquid Tight Connectors, 45°

45° malleable iron connectors for use metallic liquid tight conduit. Zinc Electroplated.

UL File No. E9391

#### Malleable Iron

Catalog Number	Trade Size	Unit Qty.	Std. Pkg.
449-SLTUS	3/8"	25	100
450-SLTUS	1/2"	25	100
451-SLTUS	3/4"	10	50
452-SLTUS	1"	5	25
453-SLTUS	1 1/4"	5	25
454-SLTUS	1 1/2"	2	10
455-SLTUS	2"	1	5
456-SLTUS	2 1/2"	---	1
457-SLTUS	3"	---	1
458-SLTUS	3 1/2"	---	1
459-SLTUS	4"	---	1

### Malleable Iron / Insulated Throat - 105°C

Catalog Number	Trade Size	Unit Qty.	Std. Pkg.
449-SLTIUS	3/8"	25	100
450-SLTIUS	1/2"	25	100
451-SLTIUS	3/4"	10	50
452-SLTIUS	1"	5	25
453-SLTIUS	1 1/4"	5	25
454-SLTIUS	1 1/2"	2	10
455-SLTIUS	2"	1	5
456-SLTIUS	2 1/2"	---	1
457-SLTIUS	3"	---	1
458-SLTIUS	3 1/2"	---	1
459-SLTIUS	4"	---	1



# FITTINGS FOR WET LOCATIONS



## Liquid Tight Connectors, 90°

90° connectors for use with metallic and nonmetallic "Type B" liquid tight conduit.

UL File No. E9391

CSA File No. LR39354

### Die Cast Zinc

Catalog Number	Trade Size	Unit Qty.	Std. Pkg.
469-LT2	3/8"	25	100
470-LT2	1/2"	25	100
471-LT2	3/4"	10	50
472-LT2	1"	5	25
473-LT2	1 1/4"	5	25

### Die Cast Zinc / Insulated Throat - 105°C

Catalog Number	Trade Size	Unit Qty.	Std. Pkg.
469-LTI2	3/8"	25	100
470-LTI2	1/2"	25	100
471-LTI2	3/4"	10	50
472-LTI2	1"	5	25
473-LTI2	1 1/4"	5	25

### Cast Zinc

Catalog Number	Trade Size	Unit Qty.	Std. Pkg.
474-LT2	1 1/2"	2	10
475-LT2	2"	---	5
476-LT2	2 1/2"	---	1
477-LT2	3"	---	1
478-LT2	3 1/2"	---	1
479-LT2	4"	---	1

### Cast Zinc / Insulated Throat - 105°C

Catalog Number	Trade Size	Unit Qty.	Std. Pkg.
474-LTI2	1 1/2"	2	10
475-LTI2	2"	---	5
476-LTI2	2 1/2"	---	1
477-LTI2	3"	---	1
478-LTI2	3 1/2"	---	1
479-LTI2	4"	---	1



## Liquid Tight Connectors, 90°

90° connectors for use with metallic liquid tight conduit.

cULus File No. E9391: Steel: 476-SLT thru 479-SLT;

476-SLTI thru 479-SLTI

CSA File No. LR39354: Steel

### Malleable Iron

Catalog Number	Trade Size	Unit Qty.	Std. Pkg.
469-SLT	3/8"	25	100
470-SLT	1/2"	25	100
471-SLT	3/4"	10	50
472-SLT	1"	5	25
473-SLT	1 1/4"	5	25
474-SLT	1 1/2"	2	10
475-SLT	2"	---	5
476-SLT	2 1/2"	---	1
477-SLT	3"	---	1
478-SLT	3 1/2"	---	1
479-SLT	4"	---	1

### Malleable Iron / Insulated Throat - 105°C

Catalog Number	Trade Size	Unit Qty.	Std. Pkg.
469-SLTI	3/8"	25	100
470-SLTI	1/2"	25	100
471-SLTI	3/4"	10	50
472-SLTI	1"	5	25
473-SLTI	1 1/4"	5	25
474-SLTI	1 1/2"	2	10
475-SLTI	2"	---	5
476-SLTI	2 1/2"	---	1
477-SLTI	3"	---	1
478-SLTI	3 1/2"	---	1
479-SLTI	4"	---	1



## Liquid Tight Connectors with Grounding Lug, 90°

90° liquid tight connectors with grounding lug for use with metallic liquid tight conduit.

UL File No. E9391, CSA File No. LR39354

### Steel with Aluminum Lug

Catalog Number	Trade Size	Unit Qty.	Std. Pkg.
469-SLTG	3/8"	20	100
470-SLTG	1/2"	20	100
471-SLTG	3/4"	10	50
472-SLTG	1"	5	25
473-SLTG	1 1/4"	4	20
474-SLTG	1 1/2"	3	15
475-SLTG	2"	2	10

### Steel with Aluminum / Insulated Throat - 105°C

Catalog Number	Trade Size	Unit Qty.	Std. Pkg.
469-SLTIG	3/8"	20	100
470-SLTIG	1/2"	20	100
471-SLTIG	3/4"	10	50
472-SLTIG	1"	5	25
473-SLTIG	1 1/4"	4	20
474-SLTIG	1 1/2"	3	15
475-SLTIG	2"	2	10





## MADE IN THE USA Liquid Tight Connectors, 90°

90° malleable iron connectors for use with metallic liquid tight conduit. Zinc Electroplated.

UL File No. E9391

### Malleable Iron

Catalog Number	Trade Size	Unit Qty.	Std. Pkg.
469-SLTUS	3/8"	25	100
470-SLTUS	1/2"	25	100
471-SLTUS	3/4"	10	50
472-SLTUS	1"	5	25
473-SLTUS	1 1/4"	5	25
474-SLTUS	1 1/2"	2	10
475-SLTUS	2"	---	5
476-SLTUS	2 1/2"	---	1
477-SLTUS	3"	---	1
478-SLTUS	3 1/2"	---	1
479-SLTUS	4"	---	1

### Malleable Iron / Insulated Throat - 105°C

Catalog Number	Trade Size	Unit Qty.	Std. Pkg.
469-SLTIUS	3/8"	25	100
470-SLTIUS	1/2"	25	100
471-SLTIUS	3/4"	10	50
472-SLTIUS	1"	5	25
473-SLTIUS	1 1/4"	5	25
474-SLTIUS	1 1/2"	2	10
475-SLTIUS	2"	---	5
476-SLTIUS	2 1/2"	---	1
477-SLTIUS	3"	---	1
478-SLTIUS	3 1/2"	---	1
479-SLTIUS	4"	---	1

## Liquid Tight Connectors, Straight & 90°

Nonmetallic straight and 90° connectors for use with nonmetallic "Type B" liquid tight conduit. Sunlight resistant.

cULus File No. E9391

### Straight Nonmetallic

Catalog Number	Trade Size	Unit Qty.	Std. Pkg.
429-NMLT	3/8"	25	100
430-NMLT	1/2"	25	100
431-NMLT	3/4"	10	50
432-NMLT	1"	5	25
433-NMLT	1 1/4"	5	25
434-NMLT	1 1/2"	2	10
435-NMLT	2"	2	10

### 90° Nonmetallic

Catalog Number	Trade Size	Unit Qty.	Std. Pkg.
469-NMLT	3/8"	25	100
470-NMLT	1/2"	25	100
471-NMLT	3/4"	10	50
472-NMLT	1"	5	25
473-NMLT	1 1/4"	2	10
474-NMLT	1 1/2"	2	10
475-NMLT	2"	2	10



## Screw-On Liquid Tight Connectors, Straight & 90°

Nonmetallic straight and 90° connectors for use with nonmetallic "Type B" liquid tight conduit. Connectors simply screw onto conduit. No tools required! Sunlight resistant.

UL File No. E9391

### Straight Nonmetallic

Catalog Number	Trade Size	Unit Qty.	Std. Pkg.
430-NMLTS	1/2"	25	100
431-NMLTS	3/4"	25	100

### 90° Nonmetallic

Catalog Number	Trade Size	Unit Qty.	Std. Pkg.
470-NMLTS	1/2"	10	100
471-NMLTS	3/4"	10	100



## Push-on Liquid Tight Connectors

Push-on nylon, swivel-type, multi-angle connectors for 0-90° Nonmetallic liquid tight (LNMFC) connections. Rubber o-ring and steel locknut included. Resists salt water, weak acids, gasoline, alcohol, oil, grease, and many common solvents. No disassembly required. Installs by pushing the connector onto the conduit or tubing and tightening the domed sealing nut.

cULus File No. E9391

### Nonmetallic

Catalog Number	Trade Size	Unit Qty.	Std. Pkg.
480-NMLTS	1/2"	10	100
481-NMLTS	3/4"	10	100



## UF Connectors

Connectors provides watertight seal around underground feeder cable. Tapered (NPT) threads.

UL File No. E11698

### Zinc Die Cast

Catalog Number	Trade Size	Cable Size	Unit Qty.	Std. Pkg. Qty.
761-UF	1/2"	14/2, 12/2, 10/2 (.250" x .500")	25	100
762-UF	3/4"	14/3, 12/3, 10/3 (.260" x .720")	10	50



# FITTINGS FOR WET LOCATIONS



## Watertight Service Entrance Cable Connectors

Compression type connectors which provides watertight seal around service entrance cable.

### Zinc Die Cast

Catalog Number	K.O. Size	Grommet Opening Size	Unit Qty.	Std. Pkg. Qty.
763-4	1"	.520" x .840"	10	100
763-6	1"	.440" x .700"	10	100
763-8	1"	.406" x .688"	10	100
764-2	1 1/4"	.600" x 1.000"	5	50
764-2N	1 1/4"	.665" x 1.094"	5	50
764-3	1 1/4"	.560" x .950"	5	50
765-2	1 1/2"	.865" x 1.325"	---	25
765-3	1 1/2"	.875" x 1.375"	---	25
766-2	2"	.860" x 1.340"	---	10
766-3	2"	.870" x 1.370"	---	10
766-4	2"	.900" x 1.500"	---	10
766-4N	2"	1.100" x 1.750"	---	10



## Threaded Hubs

To secure threaded rigid service entrance conduit to box or enclosure. Insulated throat rated 105°C. BUNA-N sealing ring completely encircles knockout to prevent contaminants from entering enclosure.

cULus File No. E9391: Type 4 - Water Tight

CSA File No. LR39354

### Zinc Die Cast

Catalog Number	Trade Size	Unit Qty.	Std. Pkg.
151-DC	1/2"	25	100
152-DC	3/4"	25	100
153-DC	1"	10	50
154-DC	1 1/4"	5	25
155-DC	1 1/2"	2	20
156-DC	2"	2	20
157-DC	2 1/2"	---	10
158-DC	3"	---	5
159-DC	3 1/2"	1	5
160-DC	4"	1	5



## Raintight Combination/Transition Couplings

Couplings used to join either metallic or nonmetallic (Type "B") liquid tight to EMT. Concrete-tight. UL listed "Raintight".

UL File No. E24001

CSA File No. LR39354

### Zinc Die Cast

Catalog Number	Trade Size	Unit Qty.	Std. Pkg.
4360-DC	1/2"	25	100
4361-DC	3/4"	10	50



## Mighty-Align® Self-Aligning, Raintight Three-Piece Conduit Couplings

Used to join two lengths of threaded rigid and IMC conduit. Patented.

cULus File No. E9391

### Malleable Iron

Catalog Number	Trade Size	Unit Qty.	Std. Pkg.
1121-RT	1/2"	25	100
1122-RT	3/4"	10	100
1123-RT	1"	5	50
1124-RT	1 1/4"	---	25
1125-RT	1 1/2"	---	20
1126-RT	2"	---	10
1127-RT	2 1/2"	---	5
1128-RT	3"	---	5
1129-RT	3 1/2"	---	4
1130-RT	4"	---	5



## Combination Couplings

Used to join metallic liquid tight to Rigid/IMC. Concrete-tight. UL listed "Raintight".

cULus File No. E9391

### Malleable Iron

Catalog Number	Trade Size (LT to Rigid)	Unit Qty.	Std. Pkg.
4369-LT	3/8" - 1/2"	25	125
4370-LT	1/2" - 1/2"	20	100
4371-LT	3/4" - 3/4"	10	50
4372-LT	1" - 1"	5	25
4373-LT	1 1/4" - 1 1/4"	4	20
4374-LT	1 1/2" - 1 1/2"	3	15
4375-LT	2" - 2"	2	10



## Mighty-Seal® Raintight Reducing Sealing Washers

Used when a concentric knockout breaks out larger than expected. Maintains NEMA 3R rating on listed enclosures. Includes one coated and one uncoated washer. Coated washer installs on the exterior of the box. Sunlight resistant. Patent Pending.

cULus File No. E11259



### Coated Galvanized Steel

Catalog Number	Trade Size	Unit Qty.	Std. Pkg.
1061-RT	3/4" - 1/2"	20	200
1062-RT	1" - 1/2"	20	200
1063-RT	1" - 3/4"	20	200
1065-RT	1 1/4" - 3/4"	20	200
1071-RT	2" - 1/2"	10	100



### Sealing Locknuts

Used to provide raintight seal when fastening threaded conduit to unthreaded opening in a box or enclosure.

cULus File No. E191572: 141 thru 146

#### Steel / PVC Seal

Catalog Number	Trade Size	Unit Qty.	Std. Pkg.
141	1/2"	50	200
142	3/4"	25	100
143	1"	25	100
144	1 1/4"	25	100
145	1 1/2"	25	100
146	2"	25	100
147	2 1/2"	5	25
148	3"	5	25
149	3 1/2"	5	25
150	4"	5	25



### Liquid Tight Sealing Rings

Provides liquid tight sealing with connector to box or enclosure.

cULus File No. E11259

#### Polyethylene With Steel Retainer

Catalog Number	Trade Size	Unit Qty.	Std. Pkg.
SR-050	1/2"	100	400
SR-075	3/4"	100	400
SR-100	1"	100	400
SR-125	1 1/4"	50	200
SR-150	1 1/2"	50	200
SR-200	2"	50	200
SR-250	2 1/2"	---	5
SR-300	3"	---	5
SR-350	3 1/2"	---	5
SR-400	4"	---	5



### Mighty-Seal® Jacketed MC and TECK Cable Connectors

The 595 and 895 series connectors are for connecting 12/2 to 10/3 PVC jacketed MC cable (parking deck/lot cable) or 14/2, 14/3, 12/2 TECK Cable with .610" maximum armor and .720" maximum jacket to box or enclosure. The 596 series connectors are for connecting 10/4 to 8/3 PVC jacketed MC cable or 14/3 to 10/3 TECK Cable with .685" maximum armor and .800" maximum jacket. Simply strip 7/8" to 1" of jacket from end of cable, loosen nut, and push cable into connector until cable reaches end stop. Tighten nut for raintight connection. Knockout gasket provides positive seal at 1/2" K.O. NPT tapered threads permits installation in threaded boxes. The 595-DC2C, 596-DC2C and 895-DC2C have a polyolefin coating and are listed for direct burial. Concrete-tight. Patented.

cULus File No. E20534 and ETL Listed (except 595-DC2C, 596-DC2C, and 895-DC2C)

ETL Listed Only: 595-DC2C, 596-DC2C and 895-DC2C

#### Zinc Die Cast

Catalog Number	Trade Size	K.O. Size	Unit Qty.	Std. Pkg. Qty.
595-DC2	3/8"	1/2"	15	60
596-DC2	1/2"	1/2"	15	60

#### Zinc Die Cast / Insulated Throat - 90°C

Catalog Number	Trade Size	K.O. Size	Unit Qty.	Std. Pkg. Qty.
595-DCI2	3/8"	1/2"	15	60
596-DCI2	1/2"	1/2"	15	60

#### Zinc Die Cast / Polyolefin Coating

Catalog Number	Trade Size	K.O. Size	Unit Qty.	Std. Pkg. Qty.
595-DC2C	3/8"	1/2"	10	40
596-DC2C	1/2"	1/2"	15	60



### 90° Jacketed MC and Teck Cable Connectors

#### Zinc Die Cast

Catalog Number	Trade Size	K.O. Size	Unit Qty.	Std. Pkg. Qty.
895-DC2	3/8"	1/2"	10	40

#### Zinc Die Cast / Insulated Throat - 90° C

Catalog Number	Trade Size	K.O. Size	Unit Qty.	Std. Pkg. Qty.
895-DCI2	3/8"	1/2"	10	40



#### Zinc Die Cast / Polyolefin Coating

Catalog Number	Trade Size	K.O. Size	Unit Qty.	Std. Pkg. Qty.
895-DC2C	3/8"	1/2"	10	40

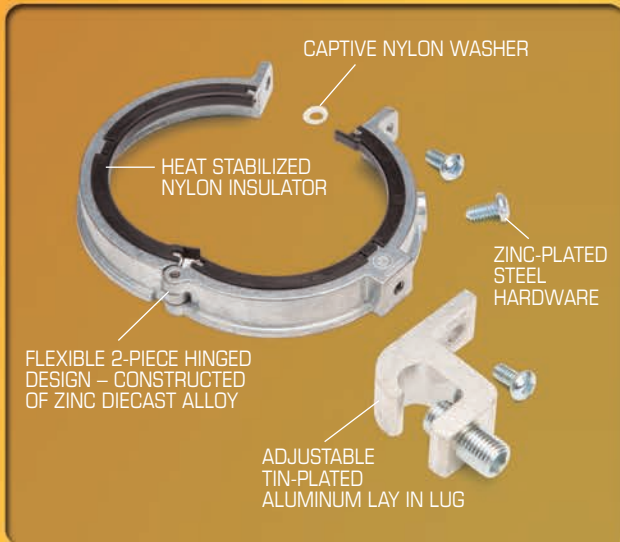


# ANOTHER INNOVATION FROM BRIDGEPORT MIGHTY-RITE® SPLIT-GROUNDING BUSHINGS



## THE RIGHT SOLUTION BEFORE OR AFTER YOU PULL WIRE

Install MIGHTY-RITE Split Grounding Bushings before or after you pull wire and make connections. Its hinged design and adjustable grounding lug deliver installation flexibility on every job. So you can move on to the next job faster. It's another contractor innovation from Bridgeport.

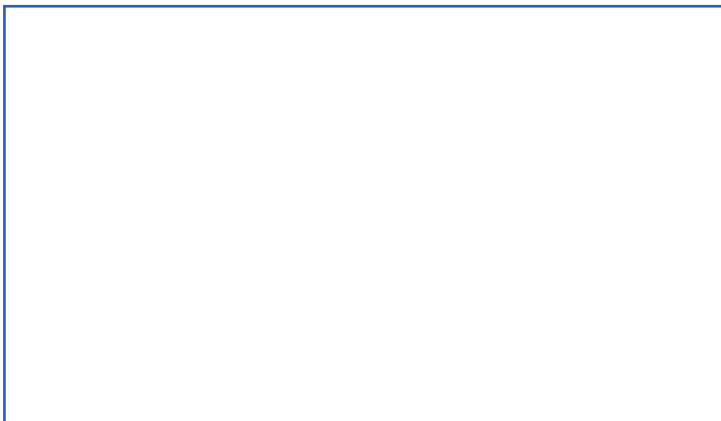


- CAN BE INSTALLED BEFORE WIRE PULL, OR AFTER - WITHOUT EXPENSIVE REWORK
- ADJUSTABLE GROUNDING LUG ACCEPTS WIRE EASIER
- PULLING LARGER CONDUCTOR WIRE IS EASIER WHEN YOU CAN INSTALL GROUNDING BUSHINGS AFTER THE PULL
- LOW PROFILE
- HINGED DESIGN ADJUSTS AND ALIGNS EASIER - EVEN IN TIGHT SPOTS
- cULus LISTED
- AVAILABLE IN ¾ TO 4-INCH TRADE SIZES
- 150°C CAPTIVE NYLON INSULATOR

**THE BRIDGEPORT  
FITTINGS DIFFERENCE**



Distributed by:



705 Lordship Blvd.  
Stratford, CT 06615-7313

Voice: 203.377.5944  
Fax: 203.381.3488  
E-mail: [sales@bptfittings.com](mailto:sales@bptfittings.com)

[www.bptfittings.com](http://www.bptfittings.com)

CONNECT  
ONLINE



Printed in the U.S.A.  
© 2013 Bridgeport Fittings, Inc. All rights reserved.

03/13 7500 BP-078

# FITTINGS FOR WET LOCATIONS



**RAINTIGHT. LIQUID TIGHT. DONE RIGHT.**



SCAN TO  
SEE FASTER  
WET LOCATION  
SOLUTIONS



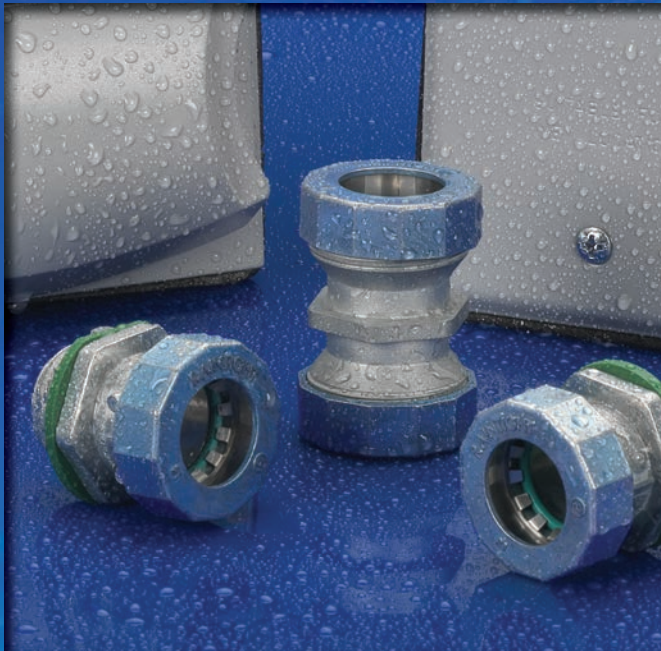
# WE ENGINEERED THE WATER OUT BY ENGINEERING THE QUALITY IN

## RAINTIGHT. LIQUID TIGHT. IN ALL THE SIZES AND CONFIGURATIONS YOU NEED.

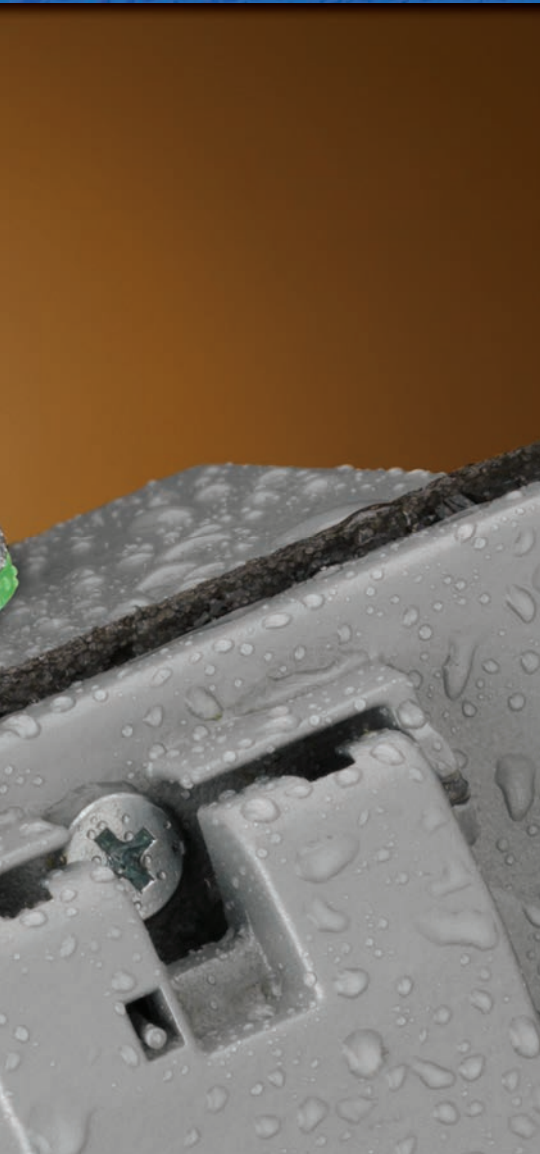
Whatever the size and whatever the configuration, Bridgeport has the solution. You can get Bridgeport innovations for cable, EMT and rigid conduit, with more choices in 1/2" to 4" trade sizes. Our separate sealing rings ensure a raintight seal and split-type compression rings make for fast, reliable installation. With Bridgeport UL-Listed raintight fittings, you can meet any code and fill any specification. Bridgeport quality shines on even the rainiest days.



FOR MORE INFORMATION, VISIT: [WWW.BPTFITTINGS.COM](http://WWW.BPTFITTINGS.COM)







## NEC® REQUIREMENTS

The National Electrical Code® (NEC) provides requirements and recommendations that govern this country's wiring practices and electrical installations. NEC articles and sections that detail the use of conduit and cable products in a wet location are listed below.

NFPA 70®, *National Electrical Code®* and *NEC®* are registered trademarks of the National Fire Protection Association, Quincy, MA.

### NEC Articles

**358.42 Couplings and Connectors** used with EMT shall be made up tight. Where buried in masonry or concrete, they shall be concretetight type. They shall be listed for use in wet locations and comply with Article **314.15**.

**344.42 Couplings and Connectors.** (A) Threadless couplings and connectors used with conduit shall be made tight. Where buried in masonry or concrete, they shall be the concretetight type. Where installed in wet locations, they shall comply with **314.15**. Threadless couplings and connectors shall not be used on threaded conduit ends unless listed for the purpose.

**314.15 Damp or Wet Locations.** In Damp or Wet Locations boxes, conduit bodies, and fittings shall be placed or equipped so as to prevent moisture from entering or accumulating within the box, conduit body, or fitting. Boxes, conduit bodies, and fittings installed in wet locations shall be listed for use in wet locations.

**330.40 Boxes and Fittings.** Fittings used for connecting Type MC cable to boxes, cabinets, or other equipment shall be listed and identified for such use.

Reprinted with permission from NFPA 70®, *National Electrical Code®*, Copyright © 2007, National Fire Protection Association, Quincy, MA 02169. This reprinted material is not the complete and official position of the NFPA on the referenced subject, which is represented only by the standard in its entirety.

## UL REQUIREMENTS

Effective March 2002, UL implemented a specification revision that caused industry standard split ring compression connectors to be incapable of passing UL testing. Bridgeport solved this issue by developing a patented EMT raintight design and became the industry's first manufacturer to meet the more stringent UL follow-up test requirements, thereby ensuring their products consistently and effectively excluded water. This allowed Bridgeport to mark their fittings "Raintight."

Some manufacturers have elected to color code their raintight gland nuts for identification purposes. A few manufacturers, including Bridgeport, have chosen the color blue for their steel EMT raintight fittings. Exclusive to Bridgeport is the use of the color blue on their zinc EMT raintight fittings.

# FITTINGS FOR WET LOCATIONS



## Mighty-Seal® Raintight PUSH-EMT® Connectors ★ NEW

Connecting EMT has never been this fast and easy. Simply push the connectors onto the conduit for a raintight/wet location seal. Removable and reusable. Approximately 75% quicker to install than conventional fittings. Patented.

cULus File No. E24001

### Zinc Die Cast

Catalog Number	Trade Size	Unit Qty.	Std. Pkg.
250-MSRT	1/2"	25	250
251-MSRT	3/4"	25	250

### Zinc Die Cast / Insulated Throat - 105°C

Catalog Number	Trade Size	Unit Qty.	Std. Pkg.
250-MSRTI	1/2"	25	250
251-MSRTI	3/4"	25	250



### Zinc Die Cast / Insulated Throat - 90°C

Catalog Number	Trade Size	Unit Qty.	Std. Pkg.
250-RTI2US	1/2"	50	500
251-RTI2US	3/4"	25	250
252-RTI2	1"	15	150
253-RTI2	1 1/4"	10	100
254-RTI2	1 1/2"	10	40
255-RTI2	2"	---	10
256-RTI2	2 1/2"	---	12
257-RTI2	3"	---	12
258-RTI2*	3 1/2"	---	6
259-RTI2*	4"	---	6

\*Consult factory for availability.

### Raintight Compression Connectors

Compression style connectors with internal sealing ring and knockout gasket to create a raintight seal when connecting EMT to box or enclosure. Patented. cULus File No. E24001

### Zinc Die Cast

Catalog Number	Trade Size	Unit Qty.	Std. Pkg.
250-RT2	1/2"	50	500
251-RT2	3/4"	25	250

### Zinc Die Cast / Insulated Throat - 90°C

Catalog Number	Trade Size	Unit Qty.	Std. Pkg.
250-RTI2	1/2"	50	500
251-RTI2	3/4"	25	250



## Mighty-Seal® Raintight PUSH-EMT® Couplings ★ NEW

Connecting EMT has never been this fast and easy. Simply push the couplings onto the conduit for a raintight/wet location seal. Removable and reusable. Approximately 75% quicker to install than conventional fittings. Patented.

cULus File No. E24001

### Zinc Die Cast

Catalog Number	Trade Size	Unit Qty.	Std. Pkg.
260-MSRT	1/2"	25	250
261-MSRT	3/4"	25	250

## MADE IN THE USA Zinc Raintight Compression Connectors

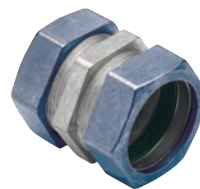
Compression style connectors with internal sealing ring and knockout gasket to create a raintight seal when connecting EMT to box or enclosure. Patented.

UL File No. E24001

### Zinc Die Cast

Catalog Number	Trade Size	Unit Qty.	Std. Pkg.
250-RT2US	1/2"	50	500
251-RT2US	3/4"	25	250
252-RT2	1"	15	150
253-RT2	1 1/4"	10	100
254-RT2	1 1/2"	10	40
255-RT2	2"	---	10
256-RT2	2 1/2"	---	12
257-RT2	3"	---	12
258-RT2*	3 1/2"	---	6
259-RT2*	4"	---	6

\*Consult factory for availability.



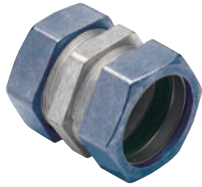
### Zinc Raintight Compression Couplings

Compression style couplings used to join two lengths of EMT. Internal sealing rings create a raintight seal. Patented.

cULus File No. E24001

### Zinc Die Cast

Catalog Number	Trade Size	Unit Qty.	Std. Pkg.
260-RT	1/2"	50	500
261-RT	3/4"	25	250



## MADE IN THE USA Zinc Raintight Compression Couplings

Compression style couplings used to join two lengths of EMT. Internal sealing rings create a raintight seal. Patented.

UL File No. E24001

### Zinc Die Cast

Catalog Number	Trade Size	Unit Qty.	Std. Pkg.
260-RTUS	1/2"	50	500
261-RTUS	3/4"	25	250
262-RT	1"	15	150
263-RT	1 1/4"	10	100
264-RT	1 1/2"	10	40
265-RT	2"	---	10
266-RT	2 1/2"	---	12
267-RT	3"	---	12
268-RT	3 1/2"	---	6
269-RT	4"	---	6



## Steel Raintight Compression Couplings

Compression style couplings used to join two lengths of EMT. Internal sealing rings create a raintight seal. Concrete-tight/Raintight.

cULus File No. E24001 **Steel**

Catalog Number	Trade Size	Unit Qty.	Std. Pkg.
260-SRT	1/2"	25	250
261-SRT	3/4"	20	200
262-SRT	1"	10	100
263-SRT	1 1/4"	---	25
264-SRT	1 1/2"	---	25
265-SRT	2"	---	10
266-SRT	2 1/2"	2	10
267-SRT	3"	2	10
268-SRT	3 1/2"	---	6
269-SRT	4"	---	6



## Steel Raintight Compression Connectors

Compression type connectors with internal sealing ring and knockout gasket to create a raintight seal when connecting EMT to box or enclosure. Patented.

cULus File No. E24001

### Steel

Catalog Number	Trade Size	Unit Qty.	Std. Pkg.
250-SRT	1/2"	25	250
251-SRT	3/4"	25	250
252-SRT	1"	10	100
253-SRT	1 1/4"	---	25
254-SRT	1 1/2"	---	25
255-SRT	2"	---	10
256-SRT	2 1/2"	2	10
257-SRT	3"	2	10
258-SRT	3 1/2"	---	6
259-SRT	4"	---	6

### Steel / Insulated Throat - 105°C

Catalog Number	Trade Size	Unit Qty.	Std. Pkg.
250-SRTI	1/2"	25	250
251-SRTI	3/4"	25	250
252-SRTI	1"	10	100
253-SRTI	1 1/4"	---	25
254-SRTI	1 1/2"	---	25
255-SRTI	2"	---	10
256-SRTI	2 1/2"	2	10
257-SRTI	3"	2	10
258-SRTI	3 1/2"	---	6
259-SRTI	4"	---	6



## Mighty-Merge® Raintight Combination Couplings



Couplings used to transition EMT to rigid for a secure raintight/wet location seal. Patented.

cETLus Listed

### Zinc Die Cast

Catalog Number	EMT Trade Size	Rigid Trade Size	Unit Qty.	Std. Pkg.
290-RT	1/2"	1/2"	25	100
291-RT	3/4"	3/4"	25	100
292-RT	1"	1"	10	50



# FITTINGS FOR WET LOCATIONS



## Liquid Tight Connectors, Straight

Straight connectors for use with metallic and nonmetallic "Type B" liquid tight conduit.

UL File No. E9391

CSA File No. LR39354

### Zinc Die Cast

Catalog Number	Trade Size	Unit Qty.	Std. Pkg.
429-LT2	3/8"	25	100
430-LT2	1/2"	25	100
431-LT2	3/4"	10	50
432-LT2	1"	5	25
433-LT2	1 1/4"	5	20
434-LT2	1 1/2"	2	10
435-LT2	2"	2	20
436-LT2	2 1/2"	1	5
437-LT2	3"	1	5
438-LT2	3 1/2"	1	5
439-LT2	4"	1	5

### Zinc Die Cast / Insulated Throat - 105°C

Catalog Number	Trade Size	Unit Qty.	Std. Pkg.
429-LTI2	3/8"	25	100
430-LTI2	1/2"	25	100
431-LTI2	3/4"	10	50
432-LTI2	1"	5	25
433-LTI2	1 1/4"	5	20
434-LTI2	1 1/2"	2	10
435-LTI2	2"	2	20
436-LTI2	2 1/2"	1	5
437-LTI2	3"	1	5
438-LTI2	3 1/2"	1	5
439-LTI2	4"	1	5



## Malleable Iron

Catalog Number	Trade Size	Unit Qty.	Std. Pkg.
429-MLT	3/8"	25	100
430-MLT	1/2"	25	100
431-MLT	3/4"	10	50
432-MLT	1"	5	25
433-SLT	1 1/4"	5	20
434-SLT	1 1/2"	2	10
435-SLT	2"	2	20
436-SLT	2 1/2"	1	5
437-SLT	3"	1	5
438-SLT	3 1/2"	1	5
439-SLT	4"	1	5

## Malleable Iron / Insulated Throat – 105°C

Catalog Number	Trade Size	Unit Qty.	Std. Pkg.
429-MLTI	3/8"	25	100
430-MLTI	1/2"	25	100
431-MLTI	3/4"	10	50
432-MLTI	1"	5	25
433-SLTI	1 1/4"	5	20
434-SLTI	1 1/2"	2	10
435-SLTI	2"	2	20
436-SLTI	2 1/2"	1	5
437-SLTI	3"	1	5
438-SLTI	3 1/2"	1	5
439-SLTI	4"	1	5



## MADE IN THE USA Liquid Tight Connectors, Straight

Straight connectors for use with metallic liquid tight conduit. Zinc Electroplated.

UL File No. E9391



## Liquid Tight Connectors, Straight

Straight connectors for use with metallic liquid tight conduit.

cULus File No. E9391: 436-SLT thru 439-SLT

cULus File No. E9391: 429-MLT thru 432-MLT

cULus File No. E9391: 429-MLTI thru 432-MLTI

UL File No. E9391: Steel and 436-SLTI thru 439-SLTI

CSA File No. LR39354: Steel

### Steel

Catalog Number	Trade Size	Unit Qty.	Std. Pkg.
429-SLT	3/8"	25	100
430-SLT	1/2"	25	100
431-SLT	3/4"	10	50
432-SLT	1"	5	25

### Steel / Insulated Throat - 105°C

Catalog Number	Trade Size	Unit Qty.	Std. Pkg.
429-SLTI	3/8"	25	100
430-SLTI	1/2"	25	100
431-SLTI	3/4"	10	50
432-SLTI	1"	5	25

### Steel

Catalog Number	Trade Size	Unit Qty.	Std. Pkg.
429-SLTUS	3/8"	25	100
430-SLTUS	1/2"	25	100
431-SLTUS	3/4"	10	50
432-SLTUS	1"	5	25
433-SLTUS	1 1/4"	5	20
434-SLTUS	1 1/2"	2	10
435-SLTUS	2"	2	20
436-SLTUS	2 1/2"	1	5
437-SLTUS	3"	1	5
438-SLTUS	3 1/2"	1	5
439-SLTUS	4"	1	5

### Steel / Insulated Throat – 105°C

Catalog Number	Trade Size	Unit Qty.	Std. Pkg.
429-SLTIUS	3/8"	25	100
430-SLTIUS	1/2"	25	100
431-SLTIUS	3/4"	10	50
432-SLTIUS	1"	5	25
433-SLTIUS	1 1/4"	5	20
434-SLTIUS	1 1/2"	2	10
435-SLTIUS	2"	2	20
436-SLTIUS	2 1/2"	1	5
437-SLTIUS	3"	1	5
438-SLTIUS	3 1/2"	1	5
439-SLTIUS	4"	1	5



### Liquid Tight Connectors with Grounding Lug, Straight

Straight liquid tight connectors with grounding lug for use with metallic liquid tight conduit.

UL File No. E9391

CSA File No. LR39354

#### Steel with Aluminum Lug

Catalog Number	Trade Size	Unit Qty.	Std. Pkg.
429-SLTG	3/8"	25	125
430-SLTG	1/2"	25	125
431-SLTG	3/4"	25	125
432-SLTG	1"	10	50
433-SLTG	1 1/4"	5	25
434-SLTG	1 1/2"	5	25
435-SLTG	2"	2	10

#### Steel with Aluminum Lug / Insulated Throat - 105°C

Catalog Number	Trade Size	Unit Qty.	Std. Pkg.
429-SLTIG	3/8"	25	125
430-SLTIG	1/2"	25	125
431-SLTIG	3/4"	25	125
432-SLTIG	1"	10	50
433-SLTIG	1 1/4"	5	25
434-SLTIG	1 1/2"	5	25
435-SLTIG	2"	2	10

### Liquid Tight Connectors, 45°

45° connectors for use with metallic liquid tight conduit.

UL File No. E9391

CSA File No. LR39354

#### Malleable Iron

Catalog Number	Trade Size	Unit Qty.	Std. Pkg.
449-SLT	3/8"	25	100
450-SLT	1/2"	25	100
451-SLT	3/4"	10	50
452-SLT	1"	5	25
453-SLT	1 1/4"	5	25
454-SLT	1 1/2"	2	10
455-SLT	2"	1	5
456-SLT	2 1/2"	---	1
457-SLT	3"	---	1
458-SLT	3 1/2"	---	1
459-SLT	4"	---	1



### Malleable Iron / Insulated Throat - 105°C

Catalog Number	Trade Size	Unit Qty.	Std. Pkg.
449-SLTI	3/8"	25	100
450-SLTI	1/2"	25	100
451-SLTI	3/4"	10	50
452-SLTI	1"	5	25
453-SLTI	1 1/4"	5	25
454-SLTI	1 1/2"	2	10
455-SLTI	2"	1	5
456-SLTI	2 1/2"	---	1
457-SLTI	3"	---	1
458-SLTI	3 1/2"	---	1
459-SLTI	4"	---	1

### MADE IN THE USA Liquid Tight Connectors, 45°

45° malleable iron connectors for use metallic liquid tight conduit. Zinc Electroplated.

UL File No. E9391

#### Malleable Iron

Catalog Number	Trade Size	Unit Qty.	Std. Pkg.
449-SLTUS	3/8"	25	100
450-SLTUS	1/2"	25	100
451-SLTUS	3/4"	10	50
452-SLTUS	1"	5	25
453-SLTUS	1 1/4"	5	25
454-SLTUS	1 1/2"	2	10
455-SLTUS	2"	1	5
456-SLTUS	2 1/2"	---	1
457-SLTUS	3"	---	1
458-SLTUS	3 1/2"	---	1
459-SLTUS	4"	---	1

### Malleable Iron / Insulated Throat - 105°C

Catalog Number	Trade Size	Unit Qty.	Std. Pkg.
449-SLTIUS	3/8"	25	100
450-SLTIUS	1/2"	25	100
451-SLTIUS	3/4"	10	50
452-SLTIUS	1"	5	25
453-SLTIUS	1 1/4"	5	25
454-SLTIUS	1 1/2"	2	10
455-SLTIUS	2"	1	5
456-SLTIUS	2 1/2"	---	1
457-SLTIUS	3"	---	1
458-SLTIUS	3 1/2"	---	1
459-SLTIUS	4"	---	1



# FITTINGS FOR WET LOCATIONS



## Liquid Tight Connectors, 90°

90° connectors for use with metallic and nonmetallic "Type B" liquid tight conduit.

UL File No. E9391

CSA File No. LR39354

### Die Cast Zinc

Catalog Number	Trade Size	Unit Qty.	Std. Pkg.
469-LT2	3/8"	25	100
470-LT2	1/2"	25	100
471-LT2	3/4"	10	50
472-LT2	1"	5	25
473-LT2	1 1/4"	5	25

### Die Cast Zinc / Insulated Throat - 105°C

Catalog Number	Trade Size	Unit Qty.	Std. Pkg.
469-LTI2	3/8"	25	100
470-LTI2	1/2"	25	100
471-LTI2	3/4"	10	50
472-LTI2	1"	5	25
473-LTI2	1 1/4"	5	25

### Cast Zinc

Catalog Number	Trade Size	Unit Qty.	Std. Pkg.
474-LT2	1 1/2"	2	10
475-LT2	2"	---	5
476-LT2	2 1/2"	---	1
477-LT2	3"	---	1
478-LT2	3 1/2"	---	1
479-LT2	4"	---	1

### Cast Zinc / Insulated Throat - 105°C

Catalog Number	Trade Size	Unit Qty.	Std. Pkg.
474-LTI2	1 1/2"	2	10
475-LTI2	2"	---	5
476-LTI2	2 1/2"	---	1
477-LTI2	3"	---	1
478-LTI2	3 1/2"	---	1
479-LTI2	4"	---	1



## Liquid Tight Connectors, 90°

90° connectors for use with metallic liquid tight conduit.

cULus File No. E9391: Steel: 476-SLT thru 479-SLT;

476-SLTI thru 479-SLTI

CSA File No. LR39354: Steel

### Malleable Iron

Catalog Number	Trade Size	Unit Qty.	Std. Pkg.
469-SLT	3/8"	25	100
470-SLT	1/2"	25	100
471-SLT	3/4"	10	50
472-SLT	1"	5	25
473-SLT	1 1/4"	5	25
474-SLT	1 1/2"	2	10
475-SLT	2"	---	5
476-SLT	2 1/2"	---	1
477-SLT	3"	---	1
478-SLT	3 1/2"	---	1
479-SLT	4"	---	1

### Malleable Iron / Insulated Throat - 105°C

Catalog Number	Trade Size	Unit Qty.	Std. Pkg.
469-SLTI	3/8"	25	100
470-SLTI	1/2"	25	100
471-SLTI	3/4"	10	50
472-SLTI	1"	5	25
473-SLTI	1 1/4"	5	25
474-SLTI	1 1/2"	2	10
475-SLTI	2"	---	5
476-SLTI	2 1/2"	---	1
477-SLTI	3"	---	1
478-SLTI	3 1/2"	---	1
479-SLTI	4"	---	1



## Liquid Tight Connectors with Grounding Lug, 90°

90° liquid tight connectors with grounding lug for use with metallic liquid tight conduit.

UL File No. E9391, CSA File No. LR39354

### Steel with Aluminum Lug

Catalog Number	Trade Size	Unit Qty.	Std. Pkg.
469-SLTG	3/8"	20	100
470-SLTG	1/2"	20	100
471-SLTG	3/4"	10	50
472-SLTG	1"	5	25
473-SLTG	1 1/4"	4	20
474-SLTG	1 1/2"	3	15
475-SLTG	2"	2	10

### Steel with Aluminum / Insulated Throat - 105°C

Catalog Number	Trade Size	Unit Qty.	Std. Pkg.
469-SLTIG	3/8"	20	100
470-SLTIG	1/2"	20	100
471-SLTIG	3/4"	10	50
472-SLTIG	1"	5	25
473-SLTIG	1 1/4"	4	20
474-SLTIG	1 1/2"	3	15
475-SLTIG	2"	2	10





## MADE IN THE USA Liquid Tight Connectors, 90°

90° malleable iron connectors for use with metallic liquid tight conduit. Zinc Electroplated.

UL File No. E9391

### Malleable Iron

Catalog Number	Trade Size	Unit Qty.	Std. Pkg.
469-SLTUS	3/8"	25	100
470-SLTUS	1/2"	25	100
471-SLTUS	3/4"	10	50
472-SLTUS	1"	5	25
473-SLTUS	1 1/4"	5	25
474-SLTUS	1 1/2"	2	10
475-SLTUS	2"	---	5
476-SLTUS	2 1/2"	---	1
477-SLTUS	3"	---	1
478-SLTUS	3 1/2"	---	1
479-SLTUS	4"	---	1

### Malleable Iron / Insulated Throat - 105°C

Catalog Number	Trade Size	Unit Qty.	Std. Pkg.
469-SLTIUS	3/8"	25	100
470-SLTIUS	1/2"	25	100
471-SLTIUS	3/4"	10	50
472-SLTIUS	1"	5	25
473-SLTIUS	1 1/4"	5	25
474-SLTIUS	1 1/2"	2	10
475-SLTIUS	2"	---	5
476-SLTIUS	2 1/2"	---	1
477-SLTIUS	3"	---	1
478-SLTIUS	3 1/2"	---	1
479-SLTIUS	4"	---	1

## Liquid Tight Connectors, Straight & 90°

Nonmetallic straight and 90° connectors for use with nonmetallic "Type B" liquid tight conduit. Sunlight resistant.

cULus File No. E9391

### Straight Nonmetallic

Catalog Number	Trade Size	Unit Qty.	Std. Pkg.
429-NMLT	3/8"	25	100
430-NMLT	1/2"	25	100
431-NMLT	3/4"	10	50
432-NMLT	1"	5	25
433-NMLT	1 1/4"	5	25
434-NMLT	1 1/2"	2	10
435-NMLT	2"	2	10

### 90° Nonmetallic

Catalog Number	Trade Size	Unit Qty.	Std. Pkg.
469-NMLT	3/8"	25	100
470-NMLT	1/2"	25	100
471-NMLT	3/4"	10	50
472-NMLT	1"	5	25
473-NMLT	1 1/4"	2	10
474-NMLT	1 1/2"	2	10
475-NMLT	2"	2	10



## Screw-On Liquid Tight Connectors, Straight & 90°

Nonmetallic straight and 90° connectors for use with nonmetallic "Type B" liquid tight conduit. Connectors simply screw onto conduit. No tools required! Sunlight resistant.

UL File No. E9391

### Straight Nonmetallic

Catalog Number	Trade Size	Unit Qty.	Std. Pkg.
430-NMLTS	1/2"	25	100
431-NMLTS	3/4"	25	100

### 90° Nonmetallic

Catalog Number	Trade Size	Unit Qty.	Std. Pkg.
470-NMLTS	1/2"	10	100
471-NMLTS	3/4"	10	100



## Push-on Liquid Tight Connectors

Push-on nylon, swivel-type, multi-angle connectors for 0-90° Nonmetallic liquid tight (LNMFC) connections. Rubber o-ring and steel locknut included. Resists salt water, weak acids, gasoline, alcohol, oil, grease, and many common solvents. No disassembly required. Installs by pushing the connector onto the conduit or tubing and tightening the domed sealing nut.

cULus File No. E9391

### Nonmetallic

Catalog Number	Trade Size	Unit Qty.	Std. Pkg.
480-NMLTS	1/2"	10	100
481-NMLTS	3/4"	10	100

## UF Connectors

Connectors provides watertight seal around underground feeder cable. Tapered (NPT) threads.

UL File No. E11698

### Zinc Die Cast

Catalog Number	Trade Size	Cable Size	Unit Qty.	Std. Pkg. Qty.
761-UF	1/2"	14/2, 12/2, 10/2 (.250" x .500")	25	100
762-UF	3/4"	14/3, 12/3, 10/3 (.260" x .720")	10	50



# FITTINGS FOR WET LOCATIONS



## Watertight Service Entrance Cable Connectors

Compression type connectors which provides watertight seal around service entrance cable.

### Zinc Die Cast

Catalog Number	K.O. Size	Grommet Opening Size	Unit Qty.	Std. Pkg. Qty.
763-4	1"	.520" x .840"	10	100
763-6	1"	.440" x .700"	10	100
763-8	1"	.406" x .688"	10	100
764-2	1 1/4"	.600" x 1.000"	5	50
764-2N	1 1/4"	.665" x 1.094"	5	50
764-3	1 1/4"	.560" x .950"	5	50
765-2	1 1/2"	.865" x 1.325"	---	25
765-3	1 1/2"	.875" x 1.375"	---	25
766-2	2"	.860" x 1.340"	---	10
766-3	2"	.870" x 1.370"	---	10
766-4	2"	.900" x 1.500"	---	10
766-4N	2"	1.100" x 1.750"	---	10



## Threaded Hubs

To secure threaded rigid service entrance conduit to box or enclosure. Insulated throat rated 105°C. BUNA-N sealing ring completely encircles knockout to prevent contaminants from entering enclosure.

cULus File No. E9391: Type 4 - Water Tight

CSA File No. LR39354

### Zinc Die Cast

Catalog Number	Trade Size	Unit Qty.	Std. Pkg.
151-DC	1/2"	25	100
152-DC	3/4"	25	100
153-DC	1"	10	50
154-DC	1 1/4"	5	25
155-DC	1 1/2"	2	20
156-DC	2"	2	20
157-DC	2 1/2"	---	10
158-DC	3"	---	5
159-DC	3 1/2"	1	5
160-DC	4"	1	5



## Raintight Combination/Transition Couplings

Couplings used to join either metallic or nonmetallic (Type "B") liquid tight to EMT. Concrete-tight. UL listed "Raintight".

UL File No. E24001

CSA File No. LR39354

### Zinc Die Cast

Catalog Number	Trade Size	Unit Qty.	Std. Pkg.
4360-DC	1/2"	25	100
4361-DC	3/4"	10	50



## Mighty-Align® Self-Aligning, Raintight Three-Piece Conduit Couplings

Used to join two lengths of threaded rigid and IMC conduit. Patented.

cULus File No. E9391

### Malleable Iron

Catalog Number	Trade Size	Unit Qty.	Std. Pkg.
1121-RT	1/2"	25	100
1122-RT	3/4"	10	100
1123-RT	1"	5	50
1124-RT	1 1/4"	---	25
1125-RT	1 1/2"	---	20
1126-RT	2"	---	10
1127-RT	2 1/2"	---	5
1128-RT	3"	---	5
1129-RT	3 1/2"	---	4
1130-RT	4"	---	5



## Combination Couplings

Used to join metallic liquid tight to Rigid/IMC. Concrete-tight. UL listed "Raintight".

cULus File No. E9391

### Malleable Iron

Catalog Number	Trade Size (LT to Rigid)	Unit Qty.	Std. Pkg.
4369-LT	3/8" - 1/2"	25	125
4370-LT	1/2" - 1/2"	20	100
4371-LT	3/4" - 3/4"	10	50
4372-LT	1" - 1"	5	25
4373-LT	1 1/4" - 1 1/4"	4	20
4374-LT	1 1/2" - 1 1/2"	3	15
4375-LT	2" - 2"	2	10



## Mighty-Seal® Raintight Reducing Sealing Washers

Used when a concentric knockout breaks out larger than expected. Maintains NEMA 3R rating on listed enclosures. Includes one coated and one uncoated washer. Coated washer installs on the exterior of the box. Sunlight resistant. Patent Pending.

cULus File No. E11259



### Coated Galvanized Steel

Catalog Number	Trade Size	Unit Qty.	Std. Pkg.
1061-RT	3/4" - 1/2"	20	200
1062-RT	1" - 1/2"	20	200
1063-RT	1" - 3/4"	20	200
1065-RT	1 1/4" - 3/4"	20	200
1071-RT	2" - 1/2"	10	100



### Sealing Locknuts

Used to provide raintight seal when fastening threaded conduit to unthreaded opening in a box or enclosure.

cULus File No. E191572: 141 thru 146

#### Steel / PVC Seal

Catalog Number	Trade Size	Unit Qty.	Std. Pkg.
141	1/2"	50	200
142	3/4"	25	100
143	1"	25	100
144	1 1/4"	25	100
145	1 1/2"	25	100
146	2"	25	100
147	2 1/2"	5	25
148	3"	5	25
149	3 1/2"	5	25
150	4"	5	25



### Liquid Tight Sealing Rings

Provides liquid tight sealing with connector to box or enclosure.

cULus File No. E11259

#### Polyethylene With Steel Retainer

Catalog Number	Trade Size	Unit Qty.	Std. Pkg.
SR-050	1/2"	100	400
SR-075	3/4"	100	400
SR-100	1"	100	400
SR-125	1 1/4"	50	200
SR-150	1 1/2"	50	200
SR-200	2"	50	200
SR-250	2 1/2"	---	5
SR-300	3"	---	5
SR-350	3 1/2"	---	5
SR-400	4"	---	5



### Mighty-Seal® Jacketed MC and TECK Cable Connectors

The 595 and 895 series connectors are for connecting 12/2 to 10/3 PVC jacketed MC cable (parking deck/lot cable) or 14/2, 14/3, 12/2 TECK Cable with .610" maximum armor and .720" maximum jacket to box or enclosure. The 596 series connectors are for connecting 10/4 to 8/3 PVC jacketed MC cable or 14/3 to 10/3 TECK Cable with .685" maximum armor and .800" maximum jacket. Simply strip 7/8" to 1" of jacket from end of cable, loosen nut, and push cable into connector until cable reaches end stop. Tighten nut for raintight connection. Knockout gasket provides positive seal at 1/2" K.O. NPT tapered threads permits installation in threaded boxes. The 595-DC2C, 596-DC2C and 895-DC2C have a polyolefin coating and are listed for direct burial. Concrete-tight. Patented.

cULus File No. E20534 and ETL Listed (except 595-DC2C, 596-DC2C, and 895-DC2C)

ETL Listed Only: 595-DC2C, 596-DC2C and 895-DC2C

#### Zinc Die Cast

Catalog Number	Trade Size	K.O. Size	Unit Qty.	Std. Pkg. Qty.
595-DC2	3/8"	1/2"	15	60
596-DC2	1/2"	1/2"	15	60

#### Zinc Die Cast / Insulated Throat - 90°C

Catalog Number	Trade Size	K.O. Size	Unit Qty.	Std. Pkg. Qty.
595-DCI2	3/8"	1/2"	15	60
596-DCI2	1/2"	1/2"	15	60

#### Zinc Die Cast / Polyolefin Coating

Catalog Number	Trade Size	K.O. Size	Unit Qty.	Std. Pkg. Qty.
595-DC2C	3/8"	1/2"	10	40
596-DC2C	1/2"	1/2"	15	60



### 90° Jacketed MC and Teck Cable Connectors

#### Zinc Die Cast

Catalog Number	Trade Size	K.O. Size	Unit Qty.	Std. Pkg. Qty.
895-DC2	3/8"	1/2"	10	40

#### Zinc Die Cast / Insulated Throat - 90° C

Catalog Number	Trade Size	K.O. Size	Unit Qty.	Std. Pkg. Qty.
895-DCI2	3/8"	1/2"	10	40

#### Zinc Die Cast / Polyolefin Coating

Catalog Number	Trade Size	K.O. Size	Unit Qty.	Std. Pkg. Qty.
895-DC2C	3/8"	1/2"	10	40



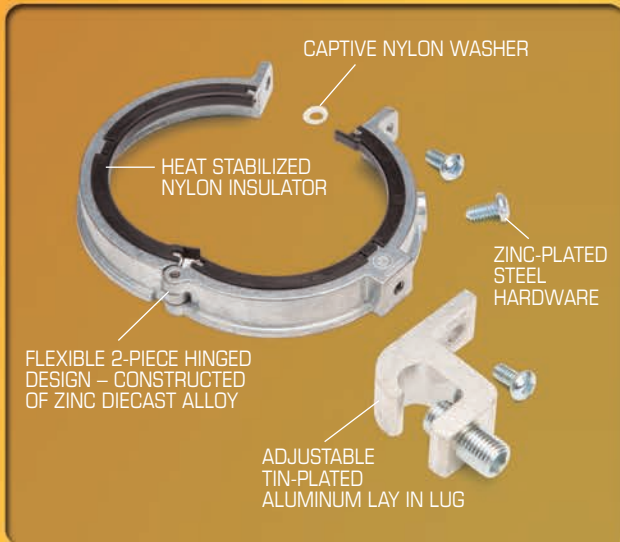


# ANOTHER INNOVATION FROM BRIDGEPORT MIGHTY-RITE® SPLIT-GROUNDING BUSHINGS



## THE RIGHT SOLUTION BEFORE OR AFTER YOU PULL WIRE

Install MIGHTY-RITE Split Grounding Bushings before or after you pull wire and make connections. Its hinged design and adjustable grounding lug deliver installation flexibility on every job. So you can move on to the next job faster. It's another contractor innovation from Bridgeport.

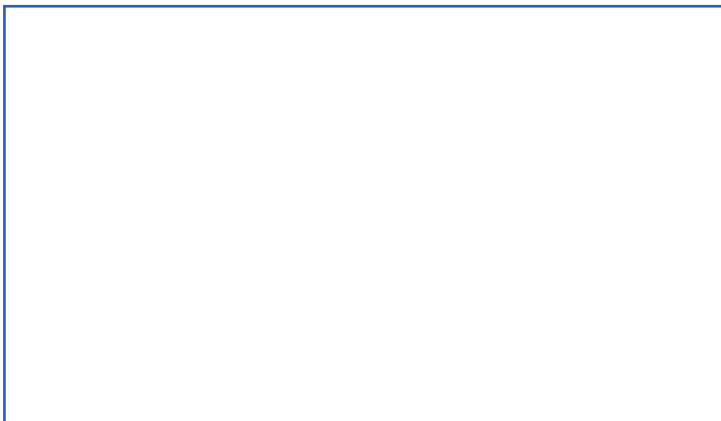


- CAN BE INSTALLED BEFORE WIRE PULL, OR AFTER - WITHOUT EXPENSIVE REWORK
- ADJUSTABLE GROUNDING LUG ACCEPTS WIRE EASIER
- PULLING LARGER CONDUCTOR WIRE IS EASIER WHEN YOU CAN INSTALL GROUNDING BUSHINGS AFTER THE PULL
- LOW PROFILE
- HINGED DESIGN ADJUSTS AND ALIGNS EASIER - EVEN IN TIGHT SPOTS
- cULus LISTED
- AVAILABLE IN ¾ TO 4-INCH TRADE SIZES
- 150°C CAPTIVE NYLON INSULATOR

**THE BRIDGEPORT  
FITTINGS DIFFERENCE**



Distributed by:



705 Lordship Blvd.  
Stratford, CT 06615-7313

Voice: 203.377.5944  
Fax: 203.381.3488  
E-mail: [sales@bptfittings.com](mailto:sales@bptfittings.com)

[www.bptfittings.com](http://www.bptfittings.com)

CONNECT  
ONLINE



Printed in the U.S.A.  
© 2013 Bridgeport Fittings, Inc. All rights reserved.

03/13 7500 BP-078