

SNAP²IT[®] MC Cable Connectors

Largest Line. Widest Cable Ranges. Fastest Installation.



**SAVE
17 seconds
per connector**

**LISTED
SNAP²IT[®]
CONNECTORS FOR
NEW MC-PCS and
MC-PCS HCF CABLE
...lighting & low voltage
circuits in same
cable**

4010AST
1/2" KO

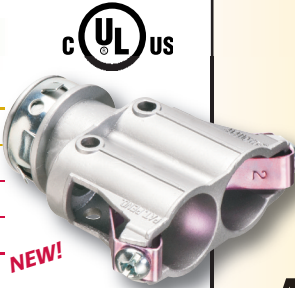
5010AST
1/2" KO

4110ST

414110ST

505010AST
3/4" KO

CATALOG NUMBER	UPC/DCI/NAED MFG #01 8997	DESCRIPTION	CABLE OUTSIDE DIA (OD)	UNIT/STD PKG
4010AST	40355	Snap in, 1/2" KO w insulated throat	.405 to .610	50/500
5010AST	00517	Snap in, 1/2" KO w insulated throat	.580 to .780	25/250
505010AST	00520	Duplex Snap in, 3/4" KO w insulated throat	(2) .590 to .820	25/25
4110ST	00728	Snap in, 1/2" KO	.525 to .705	50/500
414110ST	00729	Duplex Snap in, 1/2" KO	(2) .525 to .640	25/100
4141107ST	22095	Duplex Snap in, 3/4" KO	(2) .525 to .690	25/25



4141107ST

Arlington's zinc diecast SNAP²IT[®] fittings are the *easiest to insert* snap-on connectors. And they handle the widest variety of cables!

- **Easiest installation**
New and improved design delivers the easiest cable insertion.
- **Widest total cable ranges**
Our Snap²IT[®] connector line accommodates cables from 14/2 to 3/3.
- **Widest variety of cables**
For AC, MC, HCF, MC continuous corrugated aluminum cable, MCI-A cables (steel and aluminum), AC90 and ACG90.

These Snap2It connectors fit the NEW MC-PCS and MC-PCS HCF CABLE (lighting and low voltage circuits in same cable) and offer the GREATEST TIME-SAVINGS.

- Super-secure installation in new work or retrofit
- Connector is removable, reusable
- Fully assembled – Ready to use
- Concrete-tight when taped

**Easiest cable insertion.
NO TOOLS!
Secure hold.**



Arlington
www.aifittings.com



SNAP2IT[®] MC Cable Connectors

Largest Line. Widest Cable Ranges. Fastest Installation.

Snap2It Connectors

with and without Insulated Throat and Angled Two-prong Clip

- **Easy installation** snap cable into fitting; assembly into box...No tools!
- **Angled clip** locks onto MC cable No pullout
- **Removal, reusable**
From cable: Loosen screw on top of connector. Pull cable out.
From box: Slip screwdriver under Snap-Tite ring and twist.

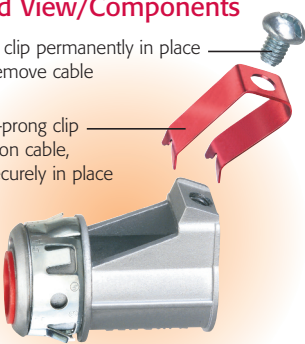


4010AST Exploded View/Components

Screw holds clip permanently in place
Loosen to remove cable

Angled, two-prong clip locks down on cable, holding it securely in place

Insulated throat



Check that the cable's outer diameter (OD) listed by the cable manufacturer is within the OD cable range listed for the fitting. The cable jacket should never go through the end stop (of fitting).

*CSA Listed w/ anti-short bushing ONLY



Arlington

1 Stauffer Industrial Park
Scranton, PA 18517
800/233.4717
Fax 570/562.0646
www.aifittings.com

CATALOG NUMBER	UPC/DCI/NAED MFG. #01 8997	CABLE (OD) OUTSIDE DIAMETER	CABLE TYPE	CABLE SIZES	UNIT PKG	STD PKG
4010AST 1/2" KO	40355	.405 to .610	For steel and aluminum: MC/HCF/AC NEW MC-PCS MC-PCS HCF	14/2, 14/3, 14/4, 12/2, 12/3, 12/4,	50	500
		.405 to .580	MCI-A	10/2, 10/3		
		.460 to .550	AC90, ACG90			
			Flexible metal conduit (regular and reduced wall)	3/8" Flex* .560 to .610		
5010AST 1/2" KO	00517	.580 to .780	For steel and aluminum: MC/HCF/AC NEW MC-PCS MC-PCS HCF	10/3, 10/4, 8/2, 8/3, 8/4 6/2, 6/3	25	250
		5010AST .580 to .780	MCI-A			
		505010ST .590 to .820				
		.650 to .850	AC90, ACG90	10/3, 10/4, 8/2, 8/3		
505010AST Duplex 3/4" KO	50720		Flexible metal conduit (regular and reduced wall)	1/2" Flex* .860 to .920	25	25

WITH INSULATED THROAT

4110ST 1/2" KO	00728	.525 to .705	For steel and aluminum: MC/HCF/AC NEW MC-PCS MC-PCS HCF	14/3, 14/4, 12/2, 12/3, 12/4, 10/2, 10/3,	50	500
		4110ST .525 to .690	MCI-A	10/4 (4110ST only)		
		414110ST .525 to .625				
		4141107ST .525 to .690				
		.550 to .650	AC90, ACG90			
414110ST 1/2" KO	00729	(2) .525 to .640	Flexible metal conduit (regular and reduced wall)	3/8" Flex* .560 to .610	25	100
		(2) .525 to .690				
4141107ST Duplex 3/4" KO	22095				25	25

DISTRIBUTED BY

SNAP²IT[®] MC Cable Connectors

Largest Line. Widest Cable Ranges. Fastest Installation.



**SAVE
17 seconds
per connector**

**LISTED
SNAP²IT[®]
CONNECTORS FOR
NEW MC-PCS and
MC-PCS HCF CABLE
...lighting & low voltage
circuits in same
cable**

4010AST
1/2" KO

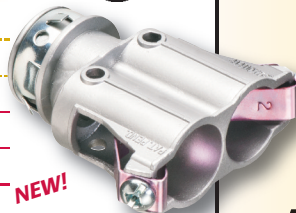
5010AST
1/2" KO

4110ST

414110ST

505010AST
3/4" KO

CATALOG NUMBER	UPC/DCI/NAED MFG #01 8997	DESCRIPTION	CABLE OUTSIDE DIA (OD)	UNIT/STD PKG
4010AST	40355	Snap in, 1/2" KO w insulated throat	.405 to .610	50/500
5010AST	00517	Snap in, 1/2" KO w insulated throat	.580 to .780	25/250
505010AST	00520	Duplex Snap in, 3/4" KO w insulated throat	(2) .590 to .820	25/25
4110ST	00728	Snap in, 1/2" KO	.525 to .705	50/500
414110ST	00729	Duplex Snap in, 1/2" KO	(2) .525 to .640	25/100
4141107ST	22095	Duplex Snap in, 3/4" KO	(2) .525 to .690	25/25



NEW!

4141107ST

Arlington's zinc diecast SNAP²IT[®] fittings are the *easiest to insert* snap-on connectors. And they handle the widest variety of cables!

- **Easiest installation**
New and improved design delivers the easiest cable insertion.
- **Widest total cable ranges**
Our Snap²IT[®] connector line accommodates cables from 14/2 to 3/3.
- **Widest variety of cables**
For AC, MC, HCF, MC continuous corrugated aluminum cable, MCI-A cables (steel and aluminum), AC90 and ACG90.

These Snap2It connectors fit the NEW MC-PCS and MC-PCS HCF CABLE (lighting and low voltage circuits in same cable) and offer the GREATEST TIME-SAVINGS.

- Super-secure installation in new work or retrofit
- Connector is removable, reusable
- Fully assembled – Ready to use
- Concrete-tight when taped

**Easiest cable
insertion.
NO TOOLS!
Secure hold.**



Arlington
www.aifittings.com



SNAP2IT[®] MC Cable Connectors

Largest Line. Widest Cable Ranges. Fastest Installation.

Snap2It Connectors

with and without Insulated Throat and Angled Two-prong Clip

- **Easy installation** snap cable into fitting; assembly into box...No tools!
- **Angled clip** locks onto MC cable No pullout
- **Removal, reusable**
From cable: Loosen screw on top of connector. Pull cable out.
From box: Slip screwdriver under Snap-Tite ring and twist.

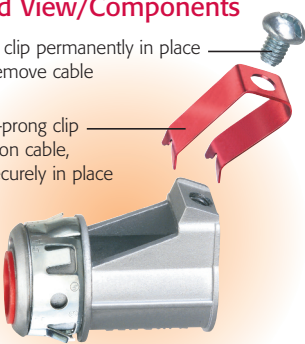


4010AST Exploded View/Components

Screw holds clip permanently in place
Loosen to remove cable

Angled, two-prong clip locks down on cable, holding it securely in place

Insulated throat



Check that the cable's outer diameter (OD) listed by the cable manufacturer is within the OD cable range listed for the fitting. The cable jacket should never go through the end stop (of fitting).

*CSA Listed w/ anti-short bushing ONLY



Arlington

1 Stauffer Industrial Park
Scranton, PA 18517
800/233.4717
Fax 570/562.0646
www.aifittings.com

CATALOG NUMBER	UPC/DCI/NAED MFG. #01 8997	CABLE (OD) OUTSIDE DIAMETER	CABLE TYPE	CABLE SIZES	UNIT PKG	STD PKG	
4010AST 1/2" KO	40355	.405 to .610	For steel and aluminum: MC/HCF/AC NEW MC-PCS MC-PCS HCF	14/2, 14/3, 14/4, 12/2, 12/3, 12/4,	50	500	
		.405 to .580	MCI-A	10/2, 10/3			
		.460 to .550	AC90, ACG90	Flexible metal conduit (regular and reduced wall)			3/8" Flex* .560 to .610
5010AST 1/2" KO	00517	.580 to .780	For steel and aluminum: MC/HCF/AC NEW MC-PCS MC-PCS HCF	10/3, 10/4, 8/2, 8/3, 8/4 6/2, 6/3	25	250	
		5010AST 505010ST	.580 to .780 .590 to .820	MCI-A			
		.650 to .850	AC90, ACG90	10/3, 10/4, 8/2, 8/3			
505010AST Duplex 3/4" KO	50720		Flexible metal conduit (regular and reduced wall)	1/2" Flex* .860 to .920	25	25	

WITH INSULATED THROAT

4110ST 1/2" KO	00728	.525 to .705	For steel and aluminum: MC/HCF/AC NEW MC-PCS MC-PCS HCF	14/3, 14/4, 12/2, 12/3, 12/4, 10/2, 10/3,	50	500	
		4110ST	.525 to .690				10/4 (4110ST only)
		414110ST	.525 to .625	MCI-A			
		4141107ST	.525 to .690	AC90, ACG90			
414110ST 1/2" KO	00729	(2) .525 to .640	Flexible metal conduit (regular and reduced wall)	3/8" Flex* .560 to .610	25	100	
		(2) .525 to .690				25	25
4141107ST Duplex 3/4" KO	22095						

DISTRIBUTED BY