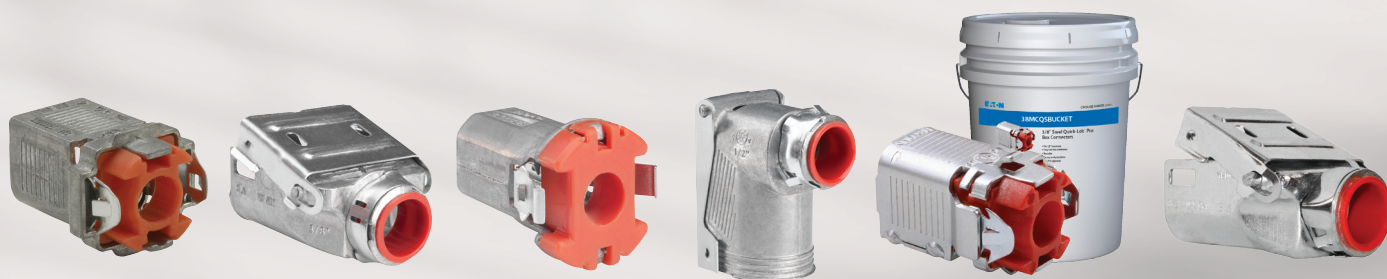


Quick-Lok Pro Connectors

For the quickest, easiest, secure
way to terminate AC/MC cable
to a box or enclosure



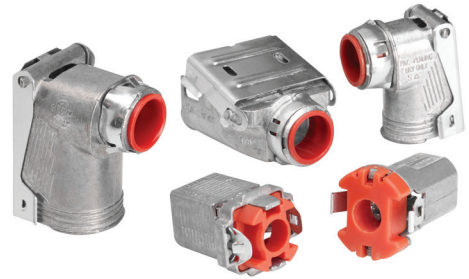
Now available in steel!



Powering Business Worldwide

Quick-Lok Pro Connectors...

improves job site productivity when installing metal clad, MCI-A (such as Southwire's MCAP™ and MC-PCS) or armored cable to a steel box or enclosure. No tools are needed for installation. Simply insert cable or conduit into the connector and install into knockout. The Quick-Lok Pro family of connectors are removable.



Applications:

- Quick-Lok Pro™ connectors are used to connect armored cable, metal clad cable, MCI-A cable, MC-PCS or flexible metallic conduit to a box or enclosure for dry location applications
- Fits 1/2" knockout

Single Connector - For installation of one cable into a box or enclosure

Duplex Connector - Allows for installation of two cables in a single KO, into box or enclosure

90° Connector - For installation of 90° bend in cable

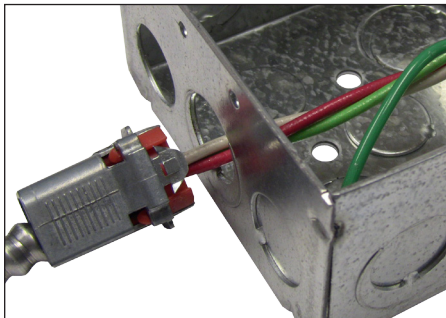
Old Work Connector - For installing and terminating cable after an old work box has been installed

Features:

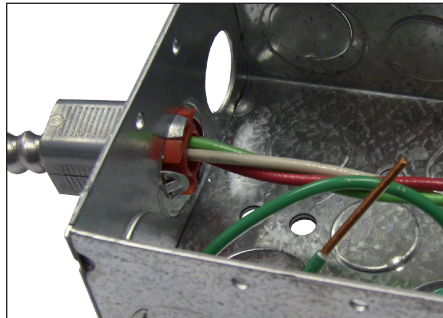
- Easy tool-free installation (the single and old work connector can also be removed without tools)
- Integral insulated throat bushing provides protection for wire insulation
- Removable
- Wide range of styles and configurations to meet customer requirements and preferences
- Single unit construction eliminates loose component parts
- Duplex and 90° connector cover opens wide for easy access and wiring
- For use in dry locations/concrete tight when taped

Single Connector Installation:

- 1 Insert cable into connector.



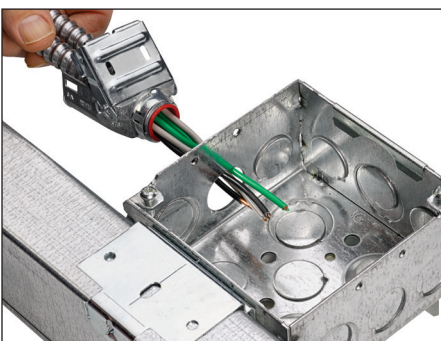
- 2 Snap connector into box.



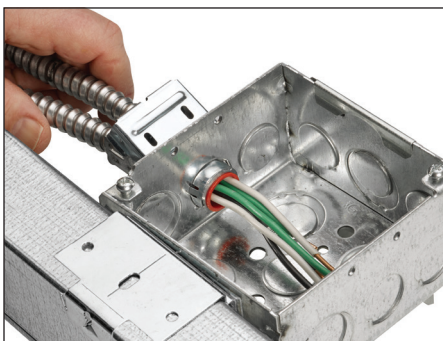
Scan the QR Code to view the Quick-Lok Pro installation videos.
See the complete offering of Quick-Lok Pro connectors at www.crouse-hinds.com

Duplex Connector Installation:

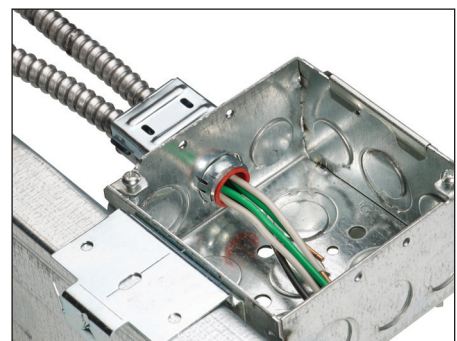
- 1 Insert cables into the 38MCQD duplex connector.



- 2 Snap connector into box.



- 3 Close the steel cover to lock the cables securely into place.



Standard Materials:

Body:

- Zinc die cast, Zinc plated steel

Cover:

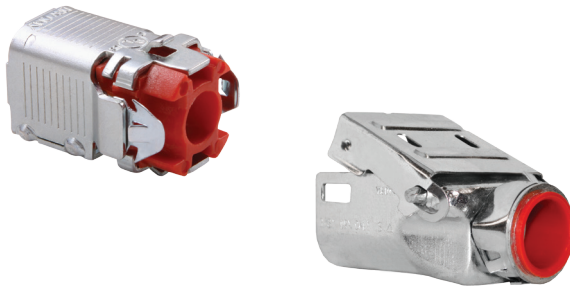
- Zinc plated steel

Insulator:

- Non-metallic

Certifications & Compliances:

- cULus
- UL File No. E-19188
- Concrete tight when taped



Listed for use with the following cable types:

Cat. #	AC/MC cable	Aluminum MCI-A	Steel MCI-A	MC-PCS
38MCQ				
38MCQS				
38MCQD				
38MCQDS				
38MCQ90				
50MCQ90				
38MCQOW				

Now available in steel!

- 3/8" single and duplex steel connectors
- Durable steel construction
- Ideal for applications where the preference or requirement is for fittings made of steel - such as hospitals, health care facilities, schools and universities
- Significant labor savings, greater ordering and application flexibility while improving overall jobsite efficiency

Ordering Information:



Cat. #	Description	Cable Size			Cable dia. range	Outlet box KO	Unit qty.	Wt. lbs. per 100
		AL and steel AC	AL and steel MC/MCI-A/MC-PCS/HCF	AL and steel RWFMC				
38MCQ	3/8" connector	14/2 to 10/3	14/2 to 10/3	3/8"	0.395" – 0.638"	1/2"	50	6
38MCQS	3/8" connector	14/2 to 10/3	14/2 to 10/3	3/8"	0.395" – 0.638"	1/2"	50	6
38MCQSBUCKET	3/8" connector	14/2 to 10/3	14/2 to 10/3	3/8"	0.395" – 0.638"	1/2"	1*	43*
38MCQD	3/8" duplex connector	14/2 to 10/3	14/2 to 10/3	3/8"	0.460" – 0.610"	1/2"	25	11.3
38MCQDS	3/8" duplex connector	14/2 to 10/3	14/2 to 10/3	3/8"	0.460" – 0.610"	1/2"	250	11.3
38MCQ90	3/8" 90° connector	14/2 to 10/3	14/2 to 10/4	3/8"	0.469" – 0.610"	1/2"	25	7.5
50MCQ90	1/2" 90° connector	8/2 to 8/3	8/2 to 8/3	1/2"	0.670" – 0.785"	1/2"	25	11.3
38MCQOW	3/8" old work connector	14/2 to 10/3	14/2 to 10/3	-	0.395" – 0.638"	1/2"	50	6

*Unit quantity and weight listed is per bucket. Pallet quantity is 16,800 which consists of two layers of 12 buckets per layer.



Commercial Products delivers quality, reliability, labor savings and lower installed cost, all from a single dependable source.

See the complete offering of Commercial Products at www.crouse-hinds.com.

**U.S. (Global Headquarters):
Eaton's Crouse-Hinds Division**

1201 Wolf Street
Syracuse, NY 13208
(866) 764-5454
FAX: (315) 477-5179
Orders Only:
ECHUSAOrders@eaton.com
CrouseCustomerCTR@eaton.com

For more information:

If further assistance is required, please contact an authorized Eaton Distributor, Sales Office, or Customer Service Department.

Canada:

Toll Free: 800-265-0502
FAX: (800) 263-9504
FAX Orders only: (866) 653-0645

Mexico/Latin America/Caribbean:

52-555-804-4000
FAX: 52-555-804-4020
ventascentromex@eaton.com

Europe (Germany):

49 (0) 6271 806-500
49 (0) 6271 806-476
sales.CCH.de@cooperindustries.com

Middle East (Dubai):

971 4 8066100
FAX: 971 4 8894813
chmesales@eaton.com

Singapore:

65-6645-9888
FAX: 65-6297-4819
chsi-sales@cooperindustries.com

China:

86-21-2899-3600
FAX: 86-21-2899-4055
cchsales@cooperindustries.com

Korea:

82-2-3484-6783
82-2-3484-6778
CCHK-sales@cooperindustries.com

Australia:

61-2-8787-2777
FAX: 61-2-9609-2342
CEASales@cooperindustries.com

India:

91-124-4683888
FAX: 91-124-4683899
cchindia@cooperindustries.com

Eaton
1000 Eaton Boulevard
Cleveland, OH 44122
United States
Eaton.com

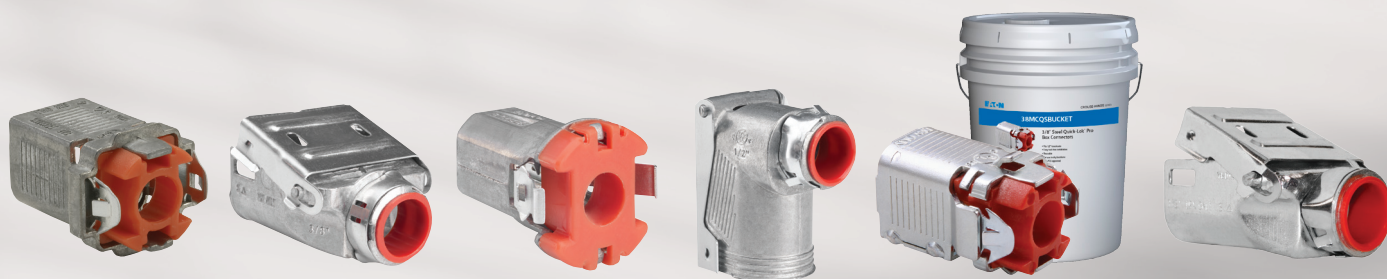
© 2018 Eaton Corporation
All Rights Reserved
Printed in USA
Form No. 5072-0118
January 2018

Eaton's Crouse-Hinds Division
1201 Wolf Street
Syracuse, NY 13208
(866) 764-5454
CrouseCustomerCTR@eaton.com

Eaton is a registered trademark.
All other trademarks are property of their respective owners.

Quick-Lok Pro Connectors

For the quickest, easiest, secure
way to terminate AC/MC cable
to a box or enclosure



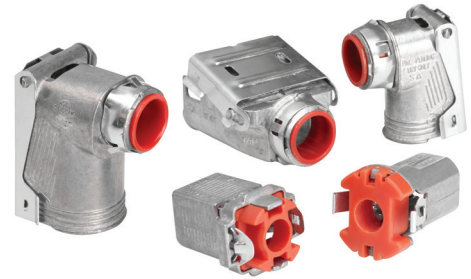
Now available in steel!



Powering Business Worldwide

Quick-Lok Pro Connectors...

improves job site productivity when installing metal clad, MCI-A (such as Southwire's MCAP™ and MC-PCS) or armored cable to a steel box or enclosure. No tools are needed for installation. Simply insert cable or conduit into the connector and install into knockout. The Quick-Lok Pro family of connectors are removable.



Applications:

- Quick-Lok Pro™ connectors are used to connect armored cable, metal clad cable, MCI-A cable, MC-PCS or flexible metallic conduit to a box or enclosure for dry location applications
- Fits ½" knockout

Single Connector - For installation of one cable into a box or enclosure

Duplex Connector - Allows for installation of two cables in a single KO, into box or enclosure

90° Connector - For installation of 90° bend in cable

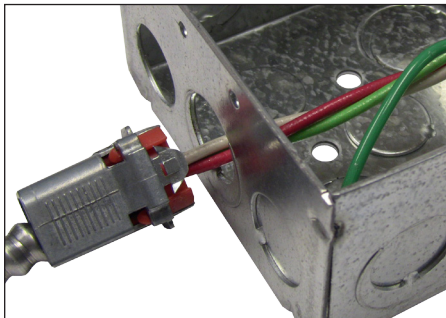
Old Work Connector - For installing and terminating cable after an old work box has been installed

Features:

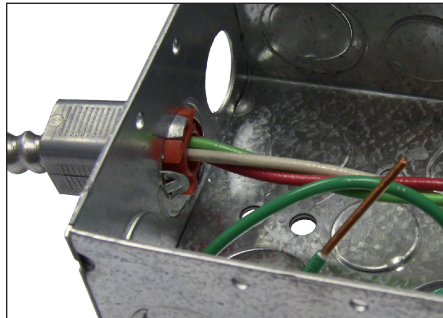
- Easy tool-free installation (the single and old work connector can also be removed without tools)
- Integral insulated throat bushing provides protection for wire insulation
- Removable
- Wide range of styles and configurations to meet customer requirements and preferences
- Single unit construction eliminates loose component parts
- Duplex and 90° connector cover opens wide for easy access and wiring
- For use in dry locations/concrete tight when taped

Single Connector Installation:

- 1 Insert cable into connector.



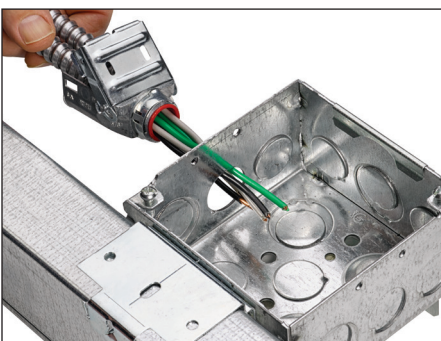
- 2 Snap connector into box.



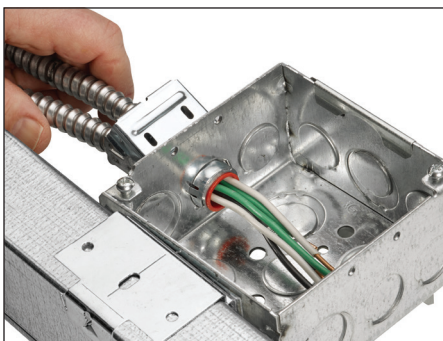
Scan the QR Code to view the Quick-Lok Pro installation videos.
See the complete offering of Quick-Lok Pro connectors at www.crouse-hinds.com

Duplex Connector Installation:

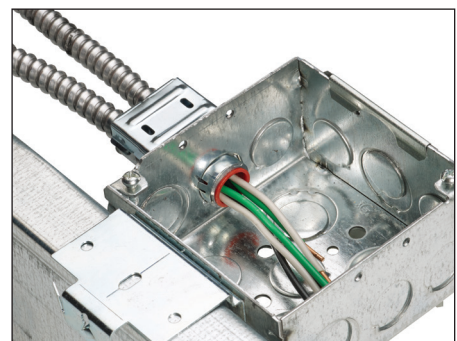
- 1 Insert cables into the 38MCQD duplex connector.



- 2 Snap connector into box.



- 3 Close the steel cover to lock the cables securely into place.



Standard Materials:

Body:

- Zinc die cast, Zinc plated steel

Cover:

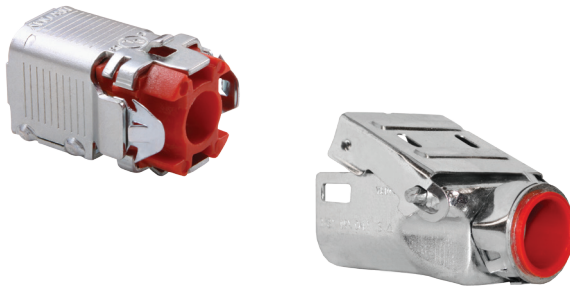
- Zinc plated steel

Insulator:

- Non-metallic

Certifications & Compliances:

- cULus
- UL File No. E-19188
- Concrete tight when taped



Listed for use with the following cable types:

Cat. #	AC/MC cable	Aluminum MCI-A	Steel MCI-A	MC-PCS
38MCQ				
38MCQS				
38MCQD				
38MCQDS				
38MCQ90				
50MCQ90				
38MCQOW				

Now available in steel!

- 3/8" single and duplex steel connectors
- Durable steel construction
- Ideal for applications where the preference or requirement is for fittings made of steel - such as hospitals, health care facilities, schools and universities
- Significant labor savings, greater ordering and application flexibility while improving overall jobsite efficiency

Ordering Information:



Cat. #	Description	Cable Size			Cable dia. range	Outlet box KO	Unit qty.	Wt. lbs. per 100
		AL and steel AC	AL and steel MC/MCI-A/MC-PCS/HCF	AL and steel RWFMC				
38MCQ	3/8" connector	14/2 to 10/3	14/2 to 10/3	3/8"	0.395" – 0.638"	1/2"	50	6
38MCQS	3/8" connector	14/2 to 10/3	14/2 to 10/3	3/8"	0.395" – 0.638"	1/2"	50	6
38MCQSBUCKET	3/8" connector	14/2 to 10/3	14/2 to 10/3	3/8"	0.395" – 0.638"	1/2"	1*	43*
38MCQD	3/8" duplex connector	14/2 to 10/3	14/2 to 10/3	3/8"	0.460" – 0.610"	1/2"	25	11.3
38MCQDS	3/8" duplex connector	14/2 to 10/3	14/2 to 10/3	3/8"	0.460" – 0.610"	1/2"	250	11.3
38MCQ90	3/8" 90° connector	14/2 to 10/3	14/2 to 10/4	3/8"	0.469" – 0.610"	1/2"	25	7.5
50MCQ90	1/2" 90° connector	8/2 to 8/3	8/2 to 8/3	1/2"	0.670" – 0.785"	1/2"	25	11.3
38MCQOW	3/8" old work connector	14/2 to 10/3	14/2 to 10/3	-	0.395" – 0.638"	1/2"	50	6

*Unit quantity and weight listed is per bucket. Pallet quantity is 16,800 which consists of two layers of 12 buckets per layer.



Commercial Products delivers quality, reliability, labor savings and lower installed cost, all from a single dependable source.

See the complete offering of Commercial Products at www.crouse-hinds.com.

**U.S. (Global Headquarters):
Eaton's Crouse-Hinds Division**

1201 Wolf Street
Syracuse, NY 13208
(866) 764-5454
FAX: (315) 477-5179
Orders Only:
ECHUSAOrders@eaton.com
CrouseCustomerCTR@eaton.com

For more information:

If further assistance is required, please contact an authorized Eaton Distributor, Sales Office, or Customer Service Department.

Canada:

Toll Free: 800-265-0502
FAX: (800) 263-9504
FAX Orders only: (866) 653-0645

Mexico/Latin America/Caribbean:

52-555-804-4000
FAX: 52-555-804-4020
ventascentromex@eaton.com

Europe (Germany):

49 (0) 6271 806-500
49 (0) 6271 806-476
sales.CCH.de@cooperindustries.com

Middle East (Dubai):

971 4 8066100
FAX: 971 4 8894813
chmesales@eaton.com

Singapore:

65-6645-9888
FAX: 65-6297-4819
chsi-sales@cooperindustries.com

China:

86-21-2899-3600
FAX: 86-21-2899-4055
cchsales@cooperindustries.com

Korea:

82-2-3484-6783
82-2-3484-6778
CCHK-sales@cooperindustries.com

Australia:

61-2-8787-2777
FAX: 61-2-9609-2342
CEASales@cooperindustries.com

India:

91-124-4683888
FAX: 91-124-4683899
cchindia@cooperindustries.com

Eaton
1000 Eaton Boulevard
Cleveland, OH 44122
United States
Eaton.com

© 2018 Eaton Corporation
All Rights Reserved
Printed in USA
Form No. 5072-0118
January 2018

Eaton's Crouse-Hinds Division
1201 Wolf Street
Syracuse, NY 13208
(866) 764-5454
CrouseCustomerCTR@eaton.com

Eaton is a registered trademark.
All other trademarks are property of their respective owners.