

90° SNAP²IT[®] MC Cable Connectors

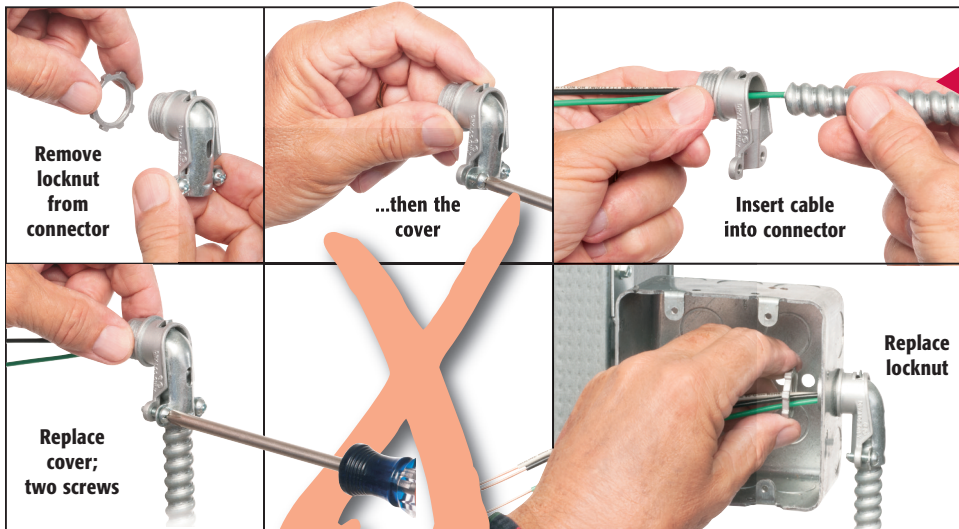
Made in USA 

MORE
on
reverse

Easy Snap-in Insertion • No Tools...Saves Time



AT THE SAME COST PER CONNECTOR!



Arlington's new **90 DEGREE SNAP²IT[®]** fittings are *easy to insert* – and handle the widest variety of cables!

- **Widest total cable ranges**
Our 90° Snap²It[®] connectors accommodate cables from 14/2 to 10/3.
- **Widest variety of cables**
For AC, MC, HCF, MC continuous corrugated aluminum cable, MCI-A cables (steel and aluminum), AC90 and ACG90.
- **Super-secure installation**
No pullout!
- **Easy, screwdriver removal**
from box; connector is reusable
- **Fully assembled – Ready to use**
with and without insulated throat



See installation instructions on reverse.

EASY to INSTALL
90° Snap2It Connector
Saves Time!...and
Costs the Same as a
2-screw 90° Connector

Eliminates
multiple steps of
2-screw connector

A 
Arlington

1 Stauffer Industrial Park
Scranton, PA 18517
800/233.4717
Fax 570/562.0646
www.aifittings.com

90° SNAP2IT® MC Cable Connectors

Made in USA 

*Easy
Snap-in
Insertion*

1
**BEND WIRES
AS SHOWN
FOR EASY
INSERTION**

2
**INSERT
CABLE
INTO
FITTING**

3
**SNAP
ASSEMBLY
INTO BOX**



38900ST



38900AST
with insulated
throat



40900ST
tinted red
inside



40900AST
with insulated
throat and
red tint inside

90° Snap2It® Connectors

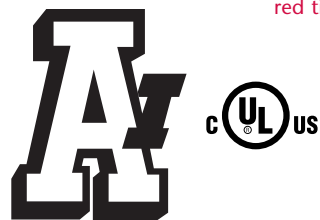
CATALOG NUMBER	UPC/DCI/NAED MFG #01 8997	CABLE TYPE	DIAMETER RANGE	CABLE RANGE	UNIT PKG	STD PKG
38900ST	04098	MC/HCF/AC Steel & Aluminum	.405 to .605	14/2 and 12/2		
38900AST	04093	MCI-A Steel & Aluminum	.440 to .550	w/ and w/o ground		
		AC90, ACG90	.440 to .550	14/3, 14/4, 12/3, 12/4, 10/2, 10/3	25	250
		Flexible Metal Conduit Steel & Aluminum (RWFMC)	3/8" Flex*			

*CSA Listed w/ anti-short bushing ONLY

Tinted red inside fitting

CATALOG NUMBER	UPC/DCI/NAED MFG #01 8997	CABLE TYPE	DIAMETER RANGE	CABLE RANGE	UNIT PKG	STD PKG
40900ST	04099	MC/HCF/AC Steel & Aluminum	.485 to .610	14/3, 12/2 and 12/3		
40900AST	04092	MCI-A Steel & Aluminum	.480 to .580	w/ and w/o ground		
		AC90, ACG90	.480 to .550	14/4, 12/4, 10/2, 10/3	25	250
		Flexible Metal Conduit Steel & Aluminum (RWFMC)	3/8" Flex*			

*CSA Listed w/ anti-short bushing ONLY



Arlington

1 Stauffer Industrial Park
Scranton, PA 18517
800/233.4717
Fax 570/562.0646
www.aifittings.com

***COSTS THE SAME AS A 2-SCREW
90° CONNECTOR!***

Distributed by

Patent pending

90° SNAP²IT[®] MC Cable Connectors

Made in USA 

MORE
on
reverse

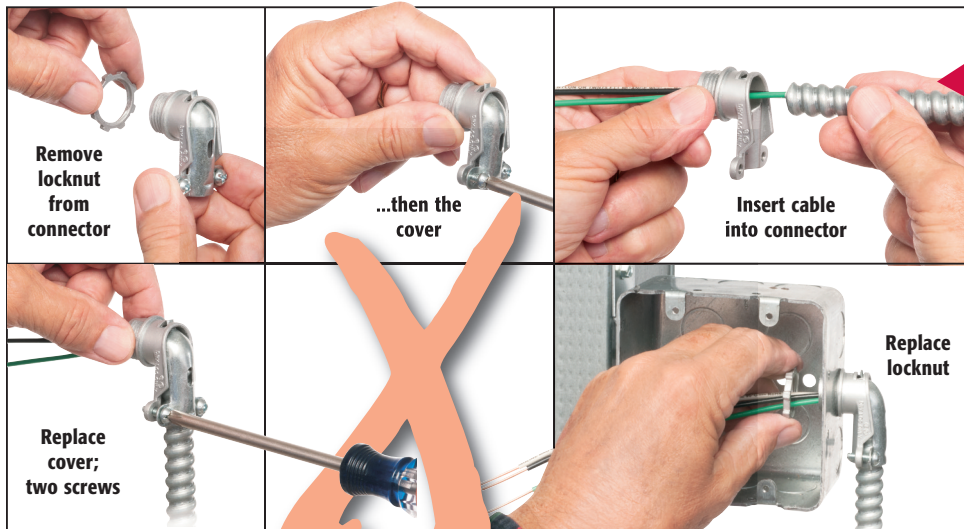
Easy Snap-in Insertion • No Tools...Saves Time



SAVE 1 Minute
per connector...

over 90° 2-screw
MC connectors!

AT THE SAME COST PER CONNECTOR!



Arlington's new **90 DEGREE SNAP²IT[®]** fittings are *easy to insert* – and handle the widest variety of cables!

- **Widest total cable ranges**
Our 90° Snap²It[®] connectors accommodate cables from 14/2 to 10/3.
- **Widest variety of cables**
For AC, MC, HCF, MC continuous corrugated aluminum cable, MCI-A cables (steel and aluminum), AC90 and ACG90.
- **Super-secure installation**
No pullout!
- **Easy, screwdriver removal**
from box; connector is reusable
- **Fully assembled – Ready to use**
with and without insulated throat



See installation instructions on reverse.

EASY to INSTALL
90° Snap2It Connector
Saves Time!...and
Costs the Same as a
2-screw 90° Connector

Eliminates
multiple steps of
2-screw connector

A 
Arlington

1 Stauffer Industrial Park
Scranton, PA 18517
800/233.4717
Fax 570/562.0646
www.aifittings.com

90° SNAP2IT® MC Cable Connectors

Made in USA 

*Easy
Snap-in
Insertion*

1
BEND WIRES
AS SHOWN
FOR EASY
INSERTION

2
INSERT
CABLE
INTO
FITTING

3
SNAP
ASSEMBLY
INTO BOX



38900ST



38900AST
with insulated
throat



40900ST
tinted red
inside



40900AST
with insulated
throat and
red tint inside

90° Snap2It® Connectors

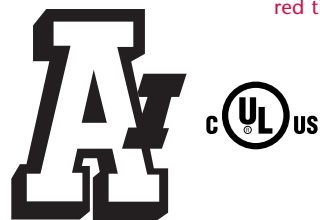
CATALOG NUMBER	UPC/DCI/NAED MFG #01 8997	CABLE TYPE	DIAMETER RANGE	CABLE RANGE	UNIT PKG	STD PKG
38900ST	04098	MC/HCF/AC Steel & Aluminum	.405 to .605	14/2 and 12/2		
38900AST	04093	MCI-A Steel & Aluminum	.440 to .550	w/ and w/o ground		
		AC90, ACG90	.440 to .550	14/3, 14/4, 12/3, 12/4, 10/2, 10/3	25	250
		Flexible Metal Conduit Steel & Aluminum (RWFMC)	3/8" Flex*			

*CSA Listed w/ anti-short bushing ONLY

Tinted red inside fitting

CATALOG NUMBER	UPC/DCI/NAED MFG #01 8997	CABLE TYPE	DIAMETER RANGE	CABLE RANGE	UNIT PKG	STD PKG
40900ST	04099	MC/HCF/AC Steel & Aluminum	.485 to .610	14/3, 12/2 and 12/3		
40900AST	04092	MCI-A Steel & Aluminum	.480 to .580	w/ and w/o ground		
		AC90, ACG90	.480 to .550	14/4, 12/4, 10/2, 10/3	25	250
		Flexible Metal Conduit Steel & Aluminum (RWFMC)	3/8" Flex*			

*CSA Listed w/ anti-short bushing ONLY



Arlington

1 Stauffer Industrial Park
Scranton, PA 18517
800/233.4717
Fax 570/562.0646
www.aifittings.com

***COSTS THE SAME AS A 2-SCREW
90° CONNECTOR!***

Distributed by

Patent pending