

TECHNICAL DATA

Fluke 370 FC Series True-rms Wireless AC/DC Clamp Meters



LOG AND TREND MEASUREMENTS

Transmit results wirelessly via Fluke Connect® Measurements app

WORK SAFELY

Capture measurements outside the arc flash zone with Bluetooth connectivity to your Apple or Android devices

LO-PASS FILTER

Integrated VFD low-pass filter (Fluke 376 FC and 375 FC) for accurate motor drive measurements

TRUE-RMS

True-rms voltage and current for accurate measurements on non-linear signals

WARRANTY

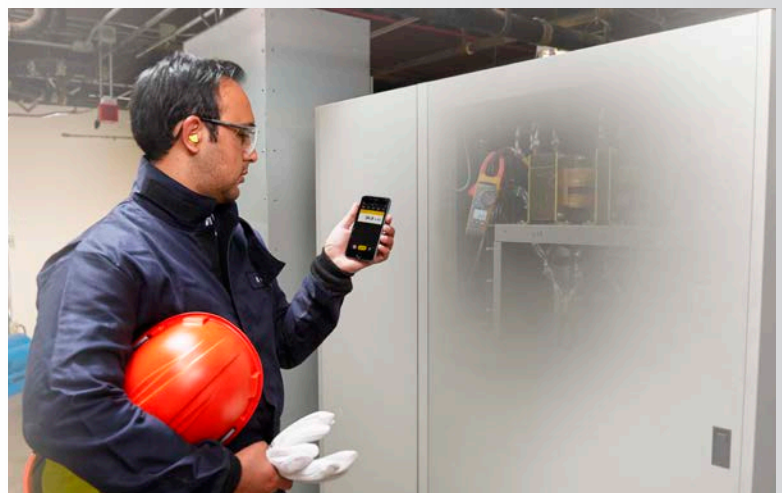
Three-year

The new Fluke 370 FC Series (376 FC, 375 FC and 374 FC) offers advanced troubleshooting performance. The iFlex® flexible current probe allows easy connections to wires in tight spaces. In addition, all three clamps are now part of the Fluke Connect® family of wireless test tools. Now you can:

- Log and trend measurements to pinpoint intermittent faults
- Transmit results wirelessly via Fluke Connect® Measurements app
- Create and send reports right from the field
- Capture measurements outside the arc flash zone with Bluetooth connectivity to your Apple or Android devices

Product highlights

- Connect your meter to your smartphone using Fluke Connect Measurements app to increase the troubleshooting power of your clamp
- Read measurements on your phone at a safe distance, wearing less PPE while your meter takes all the risks
- Record results directly to your phone and the Fluke Cloud™
- Capture intermittent faults while performing other tasks using the logging capabilities of the Fluke 376 FC and 375 FC
- Create and share reports from the field via email, or converse in real time with ShareLive™ video calls
- iFlex flexible current probe expands the measurement range to 2500 A ac; provides access to large conductors in tight spaces (included with 376 FC; compatible with 375 FC and 374 FC)





- TPAK magnetic hanging strap (included with 376 FC; compatible with 375 FC and 374 FC) allows you to conveniently hang the meter while using the probes
- Integrated VFD low pass filter (Fluke 376 FC and 375 FC) for accurate motor drive measurements
- Proprietary in-rush measurement technology to filter out noise and capture motor starting current exactly as the circuit protection sees it
- CAT IV 600 V, CAT III 1000 V safety rating
- Three-year warranty
- Soft carrying case

Measurement Capability

- 1000 A ac and dc current measurement (376 FC); 600 A ac and dc (375 FC and 364 FC)
- 2500 A ac current measurement with iFlex® flexible current probe
- 1000 V ac and dc voltage measurement
- True-rms voltage and current for accurate measurements on non-linear signals
- Frequency measurement to 500 Hz with body jaw and iFlex (376 FC and 375 FC)
- Resistance measurement to 60 k Ω (376 FC and 375 FC) or 6000 Ω (374 FC), with continuity detection
- Min, max, average and in-rush recording to capture variations automatically
- 500 mV dc measurement range to interface with other accessories (376 FC and 375 FC)
- 1000 μ F capacitance measurement



Comparison chart

	Fluke 376 FC	Fluke 375 FC	Fluke 374 FC
CAT rating	CAT III 1000 V, CAT IV 600 V	CAT III 1000 V, CAT IV 600 V	CAT III 1000 V, CAT IV 600 V
A ac range	999.9 A with clamp jaws 2500 A with iFlex® flexible current clamp	600 A with clamp jaws 2500 A with optional iFlex® flexible current clamp	600 A with clamp jaws 2500 A with optional iFlex® flexible current clamp
A dc range	999.9 A	600 A	600A
Best resolution	0.1 A	0.1 A	0.1 A
V ac range	1000 V	1000 V	1000 V
V dc range	1000 V	1000 V	1000 V
mV dc range	500 mV	500 mV	
Ohms range	60.00 kΩ	60.00 kΩ	6,000 Ω
Frequency	5-500.0 Hz	5-500.0 Hz	
Capacitance	1 μF-1,000 μF	1 μF-1,000 μF	1 μ-1,000 μF
Auto shutoff	•	•	•
True RMS	•	•	•
Display hold	•	•	•
Inrush measurements	•	•	•
Backlight	•	•	•
DC zero	•	•	•
Min/max	•	•	•
VFD low pass filter	•	•	
Logging	•	•	
iFlex® flexible current clamp	Included	Optional	Optional
Fluke Connect® compatible	•	•	•

Specifications

General specifications	
Maximum voltage between any terminal and earth ground	1000 V
Battery type	2 AA alkaline batteries, NEDA 15A, IEC LR6
Temperature	Operating: -10 °C to +50 °C (14 °F to + 122 °F) Storage: -40 °C to +60 °C (-40 °F to + 140 °F)
Operating humidity	Non condensing (< 10 °C (50 °F)), ≤90 % RH (at 10 °C to 30 °C (50 °F to 86 °F)), ≤75 % RH (at 30 °C to 40 °C (86 °F to 104 °F)), ≤45 % RH (at 40 °C to 50 °C (104 °F to 122 °F))
Altitude	Operating: 3,000 m (9,842 ft) Storage: 12,000 m (39,370 ft)
Dimensions	24.9 cm (9.8 in) x 8.5 cm (3.3 in) x 4.5 cm (1.7 in)
Weight	395 g (13.9 oz)
Jaw opening	34 mm (1.3 in)
Flexible current probe diameter	7.5 mm (.29 in)
Flexible current probe cable length (head to electronics connector)	1.8 m (70.8 in)
Safety	IEC 61010-1, Pollution Degree 2 IEC 61010-2-032: CAT III 1000 V / CAT IV 600 V IEC 61010-2-033: CAT III 1000 V / CAT IV 600 V
IP rating	IEC 60529: IP30, non-operating
Radio frequency certification	FCC ID:T68-FBLE IC:6627A-FBLE

General specifications continued

Electromagnetic Compatibility (EMC)	<p>International: IEC 61326-1: Portable, Electromagnetic Environment, IEC 61326-2-2 CISPR 11: Group 1, Class A</p> <p>Korea (KCC): Class A Equipment (Industrial Broadcasting & Communication Equipment)</p> <p>USA (FCC): 47 CFR 15 subpart B. This product is considered an exempt device per clause 15.103.</p>
Temperature coefficients	Add 0.1 × specified accuracy for each degree C above 28 °C or below 18 °C

Function	Range	Resolution	Accuracy	Crest factor	Trigger level
AC current via jaw	374 FC and 375 FC: 600.0 A 376 FC: 999.9 A	0.1 A	2 % ±5 digits (10 Hz to 100 Hz)	3 at 500 A (375 FC and 376 FC only) 2.5 at 600 A 1.42 at 1000 A (376 FC only) Add 2 % for C.F. >2	
AC current via flexible current probe	2500 A	374 FC and 375 FC: 0.1 A (≤ 600.0 A), 1 A (≤ 2500 A) 376 FC: 0.1 A (≤ 999.9 A), 1 A (≤ 2500 A)	3 % ±5 digits (5 Hz to 500 Hz)	3.0 at 1100 A (375 FC and 376 FC only) 2.5 at 1400 A 1.42 at 2500 A Add 2 % for C.F. >2	
DC current	374 FC and 375 FC: 600.0 A 376 FC: 999.9 A	0.1 A	2 % ±5 digits		
AC voltage	1000 V	0.1 V (≤600.0 V) 1 V (≤1000 V)	1.5 % ±5 digits (20 Hz to 500 Hz)		
DC voltage	1000 V	0.1 V (≤600.0 V) 1 V (≤1000 V)	1 % ±5 digits		
mV dc	500.0 mV	0.1 mV	1 % ±5 digits		
Frequency via jaw	375 FC and 376 FC: 5.0 Hz to 500.0 Hz	0.1 Hz	0.5 % ±5 digits		5 Hz to 10 Hz, ≥10 A 10 Hz to 100 Hz, ≥5 A 100 Hz to 500 Hz, ≥10 A
Frequency via flexible current probe	375 FC and 376 FC: 5.0 Hz to 500.0 Hz	0.1 Hz	0.5 % ±5 digits		5 Hz to 20 Hz, ≥25 A 20 Hz to 100 Hz, ≥20 A 100 Hz to 500 Hz, ≥25 A
Resistance	374 FC: 6,000 Ω 375 FC and 376 FC: 60 kΩ	374 FC: 0.1 Ω (≤600 Ω), 1 Ω (≤6000 Ω) 375 FC and 376 FC: 0.1 Ω (≤600 Ω), 1 Ω (≤6000 Ω), 10 Ω (≤60 kΩ)	1 % ±5 digits		
Capacitance	1000 µF	0.1 µF (≤100 µF), 1 µF (≤1000 µF)	1 % ±4 digits		

Ordering information

- 374 FC 600A AC/DC True-rms Wireless Clamp Meter
- 375 FC 600A AC/DC True-rms Wireless Clamp Meter
- 376 FC 1000A AC/DC True-rms Wireless Clamp Meter with iFlex®

Included

- 18-inch iFlex® Flexible Current Probe (376 FC only)
- TPAK Magnetic Hanging Strap (376 FC only)
- Soft Carrying Case
- TL75 Test Leads
- Two AA Alkaline Batteries
- Coated Instruction Card
- Safety Information Sheet

Optional accessories

- TPAK Magnetic Hanging Strap (included with 376 FC)
- 18-inch iFlex® Flexible Current Probe (included with 376 FC)



Set up and sustain preventive maintenance practices with ease to help you oversee your complex world with the Fluke Connect® system of software and wireless test tools.

- Maximize uptime and make confident maintenance decisions with data you can trust and trace.
- Save measurements to the Fluke Cloud™ and associate with an asset so your team can consult both historical and current measurements from one location.
- Collaborate with ease by sharing your data with others with ShareLive™ video calls and emails.
- Wireless one-step measurement transfer with AutoRecord™ measurements removes the need for clipboards and paperwork.
- Consult summary views of all assets over time for easy identification of correlated or periodic failures for easier prioritization of maintenance work.
- Generate reports with multiple measurement types to provide status or work recommendations.

Find out more at flukeconnect.com

Download the app at:



Smartphone is not included with purchase.

Fluke. *Keeping your world up and running.®*

Fluke Corporation
PO Box 9090, Everett, WA 98206 U.S.A.

Fluke Europe B.V.
PO Box 1186, 5602 BD
Eindhoven, The Netherlands

For more information call:
In the U.S.A. (800) 443-5853 or
Fax (425) 446-5116
In Europe/M-East/Africa +31 (0) 40 2675 200 or
Fax +31 (0) 40 2675 222
In Canada (800)-36-FLUKE or
Fax (905) 890-6866
From other countries +1 (425) 446-5500 or
Fax +1 (425) 446-5116
Web access: <http://www.fluke.com>

©2015 Fluke Corporation.
Specifications subject to change without notice.
Printed in U.S.A. 8/2015 6005995a-en

Modification of this document is not permitted without written permission from Fluke Corporation.

TECHNICAL DATA

Fluke 370 FC Series True-rms Wireless AC/DC Clamp Meters



LOG AND TREND MEASUREMENTS

Transmit results wirelessly via Fluke Connect® Measurements app

WORK SAFELY

Capture measurements outside the arc flash zone with Bluetooth connectivity to your Apple or Android devices

LO-PASS FILTER

Integrated VFD low-pass filter (Fluke 376 FC and 375 FC) for accurate motor drive measurements

TRUE-RMS

True-rms voltage and current for accurate measurements on non-linear signals

WARRANTY

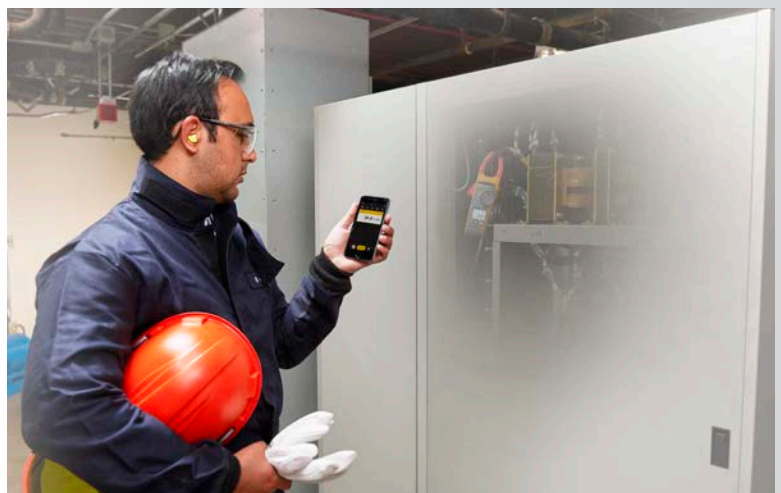
Three-year

The new Fluke 370 FC Series (376 FC, 375 FC and 374 FC) offers advanced troubleshooting performance. The iFlex® flexible current probe allows easy connections to wires in tight spaces. In addition, all three clamps are now part of the Fluke Connect® family of wireless test tools. Now you can:

- Log and trend measurements to pinpoint intermittent faults
- Transmit results wirelessly via Fluke Connect® Measurements app
- Create and send reports right from the field
- Capture measurements outside the arc flash zone with Bluetooth connectivity to your Apple or Android devices

Product highlights

- Connect your meter to your smartphone using Fluke Connect Measurements app to increase the troubleshooting power of your clamp
- Read measurements on your phone at a safe distance, wearing less PPE while your meter takes all the risks
- Record results directly to your phone and the Fluke Cloud™
- Capture intermittent faults while performing other tasks using the logging capabilities of the Fluke 376 FC and 375 FC
- Create and share reports from the field via email, or converse in real time with ShareLive™ video calls
- iFlex flexible current probe expands the measurement range to 2500 A ac; provides access to large conductors in tight spaces (included with 376 FC; compatible with 375 FC and 374 FC)





- TPAK magnetic hanging strap (included with 376 FC; compatible with 375 FC and 374 FC) allows you to conveniently hang the meter while using the probes
- Integrated VFD low pass filter (Fluke 376 FC and 375 FC) for accurate motor drive measurements
- Proprietary in-rush measurement technology to filter out noise and capture motor starting current exactly as the circuit protection sees it
- CAT IV 600 V, CAT III 1000 V safety rating
- Three-year warranty
- Soft carrying case

Measurement Capability

- 1000 A ac and dc current measurement (376 FC); 600 A ac and dc (375 FC and 364 FC)
- 2500 A ac current measurement with iFlex® flexible current probe
- 1000 V ac and dc voltage measurement
- True-rms voltage and current for accurate measurements on non-linear signals
- Frequency measurement to 500 Hz with body jaw and iFlex (376 FC and 375 FC)
- Resistance measurement to 60 k Ω (376 FC and 375 FC) or 6000 Ω (374 FC), with continuity detection
- Min, max, average and in-rush recording to capture variations automatically
- 500 mV dc measurement range to interface with other accessories (376 FC and 375 FC)
- 1000 μ F capacitance measurement



Comparison chart

	Fluke 376 FC	Fluke 375 FC	Fluke 374 FC
CAT rating	CAT III 1000 V, CAT IV 600 V	CAT III 1000 V, CAT IV 600 V	CAT III 1000 V, CAT IV 600 V
A ac range	999.9 A with clamp jaws 2500 A with iFlex® flexible current clamp	600 A with clamp jaws 2500 A with optional iFlex® flexible current clamp	600 A with clamp jaws 2500 A with optional iFlex® flexible current clamp
A dc range	999.9 A	600 A	600A
Best resolution	0.1 A	0.1 A	0.1 A
V ac range	1000 V	1000 V	1000 V
V dc range	1000 V	1000 V	1000 V
mV dc range	500 mV	500 mV	
Ohms range	60.00 kΩ	60.00 kΩ	6,000 Ω
Frequency	5-500.0 Hz	5-500.0 Hz	
Capacitance	1 μF-1,000 μF	1 μF-1,000 μF	1 μ-1,000 μF
Auto shutoff	•	•	•
True RMS	•	•	•
Display hold	•	•	•
Inrush measurements	•	•	•
Backlight	•	•	•
DC zero	•	•	•
Min/max	•	•	•
VFD low pass filter	•	•	
Logging	•	•	
iFlex® flexible current clamp	Included	Optional	Optional
Fluke Connect® compatible	•	•	•

Specifications

General specifications	
Maximum voltage between any terminal and earth ground	1000 V
Battery type	2 AA alkaline batteries, NEDA 15A, IEC LR6
Temperature	Operating: -10 °C to +50 °C (14 °F to + 122 °F) Storage: -40 °C to +60 °C (-40 °F to + 140 °F)
Operating humidity	Non condensing (< 10 °C (50 °F)), ≤90 % RH (at 10 °C to 30 °C (50 °F to 86 °F)), ≤75 % RH (at 30 °C to 40 °C (86 °F to 104 °F)), ≤45 % RH (at 40 °C to 50 °C (104 °F to 122 °F))
Altitude	Operating: 3,000 m (9,842 ft) Storage: 12,000 m (39,370 ft)
Dimensions	24.9 cm (9.8 in) x 8.5 cm (3.3 in) x 4.5 cm (1.7 in)
Weight	395 g (13.9 oz)
Jaw opening	34 mm (1.3 in)
Flexible current probe diameter	7.5 mm (.29 in)
Flexible current probe cable length (head to electronics connector)	1.8 m (70.8 in)
Safety	IEC 61010-1, Pollution Degree 2 IEC 61010-2-032: CAT III 1000 V / CAT IV 600 V IEC 61010-2-033: CAT III 1000 V / CAT IV 600 V
IP rating	IEC 60529: IP30, non-operating
Radio frequency certification	FCC ID:T68-FBLE IC:6627A-FBLE

General specifications continued

Electromagnetic Compatibility (EMC)	<p>International: IEC 61326-1: Portable, Electromagnetic Environment, IEC 61326-2-2 CISPR 11: Group 1, Class A</p> <p>Korea (KCC): Class A Equipment (Industrial Broadcasting & Communication Equipment)</p> <p>USA (FCC): 47 CFR 15 subpart B. This product is considered an exempt device per clause 15.103.</p>
Temperature coefficients	Add 0.1 × specified accuracy for each degree C above 28 °C or below 18 °C

Function	Range	Resolution	Accuracy	Crest factor	Trigger level
AC current via jaw	374 FC and 375 FC: 600.0 A 376 FC: 999.9 A	0.1 A	2 % ±5 digits (10 Hz to 100 Hz)	3 at 500 A (375 FC and 376 FC only) 2.5 at 600 A 1.42 at 1000 A (376 FC only) Add 2 % for C.F. >2	
AC current via flexible current probe	2500 A	374 FC and 375 FC: 0.1 A (≤ 600.0 A), 1 A (≤ 2500 A) 376 FC: 0.1 A (≤ 999.9 A), 1 A (≤ 2500 A)	3 % ±5 digits (5 Hz to 500 Hz)	3.0 at 1100 A (375 FC and 376 FC only) 2.5 at 1400 A 1.42 at 2500 A Add 2 % for C.F. >2	
DC current	374 FC and 375 FC: 600.0 A 376 FC: 999.9 A	0.1 A	2 % ±5 digits		
AC voltage	1000 V	0.1 V (≤600.0 V) 1 V (≤1000 V)	1.5 % ±5 digits (20 Hz to 500 Hz)		
DC voltage	1000 V	0.1 V (≤600.0 V) 1 V (≤1000 V)	1 % ±5 digits		
mV dc	500.0 mV	0.1 mV	1 % ±5 digits		
Frequency via jaw	375 FC and 376 FC: 5.0 Hz to 500.0 Hz	0.1 Hz	0.5 % ±5 digits		5 Hz to 10 Hz, ≥10 A 10 Hz to 100 Hz, ≥5 A 100 Hz to 500 Hz, ≥10 A
Frequency via flexible current probe	375 FC and 376 FC: 5.0 Hz to 500.0 Hz	0.1 Hz	0.5 % ±5 digits		5 Hz to 20 Hz, ≥25 A 20 Hz to 100 Hz, ≥20 A 100 Hz to 500 Hz, ≥25 A
Resistance	374 FC: 6,000 Ω 375 FC and 376 FC: 60 kΩ	374 FC: 0.1 Ω (≤600 Ω), 1 Ω (≤6000 Ω) 375 FC and 376 FC: 0.1 Ω (≤600 Ω), 1 Ω (≤6000 Ω), 10 Ω (≤60 kΩ)	1 % ±5 digits		
Capacitance	1000 µF	0.1 µF (≤100 µF), 1 µF (≤1000 µF)	1 % ±4 digits		

Ordering information

- 374 FC 600A AC/DC True-rms Wireless Clamp Meter
- 375 FC 600A AC/DC True-rms Wireless Clamp Meter
- 376 FC 1000A AC/DC True-rms Wireless Clamp Meter with iFlex®

Included

- 18-inch iFlex® Flexible Current Probe (376 FC only)
- TPAK Magnetic Hanging Strap (376 FC only)
- Soft Carrying Case
- TL75 Test Leads
- Two AA Alkaline Batteries
- Coated Instruction Card
- Safety Information Sheet

Optional accessories

- TPAK Magnetic Hanging Strap (included with 376 FC)
- 18-inch iFlex® Flexible Current Probe (included with 376 FC)



Set up and sustain preventive maintenance practices with ease to help you oversee your complex world with the Fluke Connect® system of software and wireless test tools.

- Maximize uptime and make confident maintenance decisions with data you can trust and trace.
- Save measurements to the Fluke Cloud™ and associate with an asset so your team can consult both historical and current measurements from one location.
- Collaborate with ease by sharing your data with others with ShareLive™ video calls and emails.
- Wireless one-step measurement transfer with AutoRecord™ measurements removes the need for clipboards and paperwork.
- Consult summary views of all assets over time for easy identification of correlated or periodic failures for easier prioritization of maintenance work.
- Generate reports with multiple measurement types to provide status or work recommendations.

Find out more at flukeconnect.com

Download the app at:



Smartphone is not included with purchase.

Fluke. *Keeping your world up and running.®*

Fluke Corporation
PO Box 9090, Everett, WA 98206 U.S.A.

Fluke Europe B.V.
PO Box 1186, 5602 BD
Eindhoven, The Netherlands

For more information call:
In the U.S.A. (800) 443-5853 or
Fax (425) 446-5116
In Europe/M-East/Africa +31 (0) 40 2675 200 or
Fax +31 (0) 40 2675 222
In Canada (800)-36-FLUKE or
Fax (905) 890-6866
From other countries +1 (425) 446-5500 or
Fax +1 (425) 446-5116
Web access: <http://www.fluke.com>

©2015 Fluke Corporation.
Specifications subject to change without notice.
Printed in U.S.A. 8/2015 6005995a-en

Modification of this document is not permitted without written permission from Fluke Corporation.