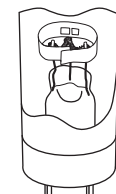
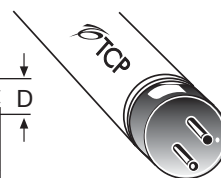
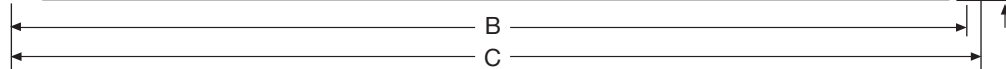


**TCP Item Number: 31054835**      Lamp code: F54T5HO/835



Cathode Guarded

Average Rated Life (hours)	
3 hours per start -----	24,000
TCLP Compliant -----	Yes
Low Mercury -----	Yes

### Physical Characteristics

Lamp type -----	T5
Base type -----	Miniature Bipin
Lamp Material -----	Soda Lime
Phosphor -----	Tri-Phosphor
Lamp Diameter (inches)	
Nominal (D) -----	.625
Maximum (D) -----	.670
Overall Length (inches)	
Nominal (C) -----	45.2
Maximum (C) -----	45.8
Face to End of opposing pin (inches)	
Maximum (B) -----	45.52
Minimum (B) -----	45.42

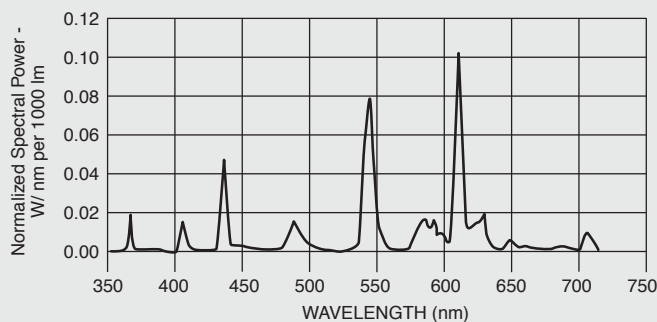
### Photometric Characteristics

Initial Lumens -----	5000
Mean Lumens (40% of rated life) -----	4750
Correlated Color Temperature (Kelvin) -----	3500
Color Rendering Index (CRI) -----	85
Normal Efficacy (Lumens/Watts) -----	92.6

### Electrical Characteristics

Lamp Watts -----	54
Nominal Lamp Volts -----	118
Nominal Lamp Operating Frequency (Hz) --	50-60 Hz
Min. Starting Temperature (°C) -----	-20
Min. Starting Lamp Voltage at 10°C -----	520
Min. Cathode Resistance (Rh/Rc) -----	4.25
Max. Cathode Resistance (Rh/Rc) -----	6.5

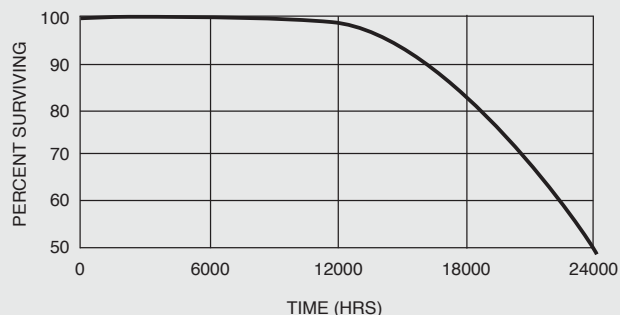
### Spectral Power Distribution



### Lamp Lumen Maintenance



### Typical Lamp Mortality

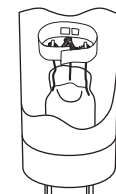
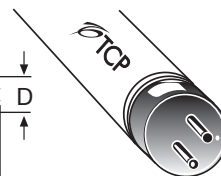
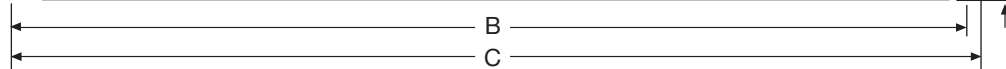


**24 MONTH** STANDARD WARRANTY

For the most up-to-date specs, please visit [www.tcp.com](http://www.tcp.com)

\*Testing performed with Instant Start Ballast.

**TCP Item Number: 31054835**      Lamp code: F54T5HO/835



Cathode Guarded

Average Rated Life (hours)  
 3 hours per start ----- 24,000

TCLP Compliant ----- Yes  
 Low Mercury ----- Yes

### Physical Characteristics

Lamp type ----- T5  
 Base type ----- Miniature Bipin  
 Lamp Material ----- Soda Lime  
 Phosphor ----- Tri-Phosphor

Lamp Diameter (inches)  
 Nominal (D) ----- .625  
 Maximum (D) ----- .670

Overall Length (inches)  
 Nominal (C) ----- 45.2  
 Maximum (C) ----- 45.8

Face to End of opposing pin (inches)  
 Maximum (B) ----- 45.52  
 Minimum (B) ----- 45.42

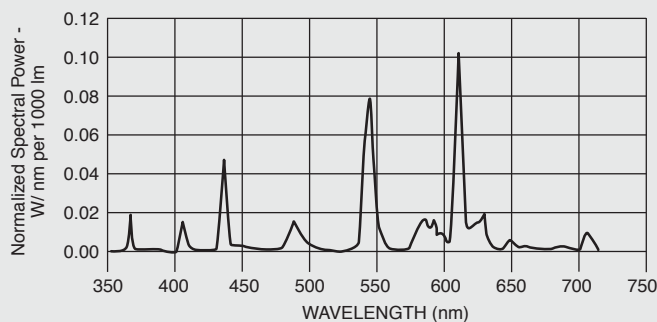
### Photometric Characteristics

Initial Lumens ----- 5000  
 Mean Lumens (40% of rated life) ----- 4750  
 Correlated Color Temperature (Kelvin) ----- 3500  
 Color Rendering Index (CRI) ----- 85  
 Normal Efficacy (Lumens/Watts) ----- 92.6

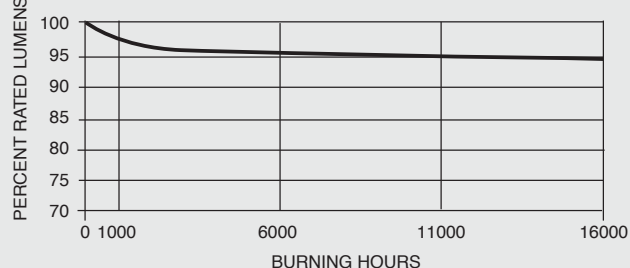
### Electrical Characteristics

Lamp Watts ----- 54  
 Nominal Lamp Volts ----- 118  
 Nominal Lamp Operating Frequency (Hz) -- 50-60 Hz  
 Min. Starting Temperature (°C) ----- -20  
 Min. Starting Lamp Voltage at 10°C ----- 520  
 Min. Cathode Resistance (Rh/Rc) ----- 4.25  
 Max. Cathode Resistance (Rh/Rc) ----- 6.5

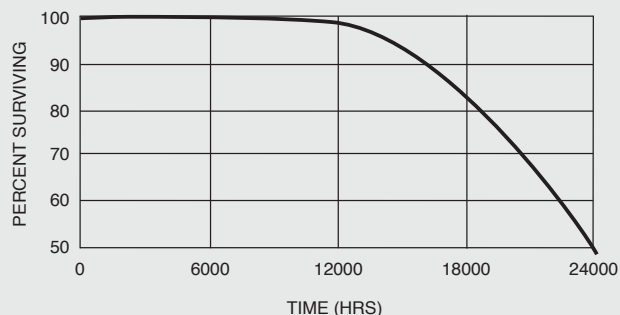
### Spectral Power Distribution



### Lamp Lumen Maintenance



### Typical Lamp Mortality



**24** MONTH STANDARD WARRANTY

For the most up-to-date specs, please visit [www.tcp.com](http://www.tcp.com)

\*Testing performed with Instant Start Ballast.