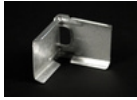




# ELLIOTT ELECTRIC SUPPLY

We Deliver...Lower Cost, Quality Products, & Personal Service

2310 N. Stallings Dr.  
75964-0000, TX Nacogdoches  
Phone: 936-569-7941  
Fax: 936-560-4685



## 2017TC STL Int. Corner Coupling 2000

Wiremold/Legrand

|                  |  |
|------------------|--|
| Catalog Number   | 2017TC   |
| Manufacturer     | Wiremold/Legrand   |
| Description      | <P>Can Be Used As Inside Corner Coupling or As Coupling and Straight Thru Fitting. Furnished With One Fiber Bushing.</P> |
| Weight per unit  | 0.0500 (lbs/each)  |
| Product Category | Metallic Raceway & Accessories   |

### Features

|         |         |
|---------|---------|
| Voltage | 125.0 V |
|---------|---------|

### Descriptions

|                        |  |
|------------------------|--|
| Description            | STL INT. CORNER COUPLING 2000  |
| extra long description | WM 2017TC STL INT. CORNER COUPLING   |
| Long Description       | <p>Can be used as inside corner coupling or as coupling and straight thru fitting. Furnished with one fiber bushing.</p> |
| Product Type           | STL Int. Corner Coupling 2000  |
| Special Features       | Steel Raceway, Compact low profile design, Full range of fittings, one and two - gang device boxes.                      |

### Manufacturer Information

|                           |                |
|---------------------------|----------------|
| Brand                     | WIREMOLD       |
| GTIN                      | 00786776090772 |
| Manufacturers Part Number | 2017TC         |
| UPC                       | 786776090772   |

### Taxonomies, Classifications, and Categories

|                      |   |
|----------------------|---|
| Category Description | Panduit & Wiremold Metallic & Non-Metallic Raceways |
| Type                 | Plugmold  |

### Trade Size

|          |      |
|----------|------|
| Amperage | 15.0 |
|----------|------|

### Packaging

|                 |      |
|-----------------|------|
| Carton          | 1    |
| Weight Per each | 0.05 |

### Uses, Certifications, and Standards

|                          |   |
|--------------------------|---|
| environmental conditions | Dry Interior Locations  |
| standard                 | CULUS, ROHS, cULus Listed Base & Blank Cover: File E4376 Guide RJBT. Multioutlet Assemblies: File E15191 Guide PVGT. Fittings: File E41751 Guide RJPR. Base & Blank Cover & Plugmold Series w/Snapicoil Haarness: Meets Article 386 of NEC. Meets Section 12-3032 of CEC. cULus Listed Raceway: File E4376 Guide RJBT. Fittings: File E41751 Guide RJPR. Base & Black Cover: Meets Article 386 of NEC. Meets Section 12-600 of CEC. |