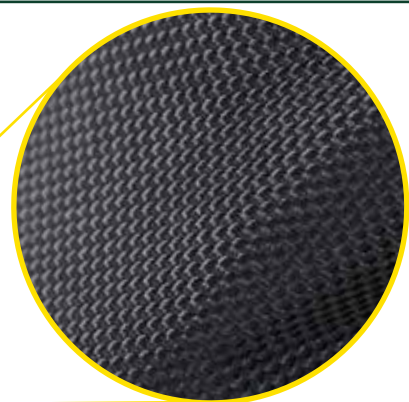




## GENERAL TOOL BELT MATERIAL AND FEATURES

5609



### BALLISTIC POLYESTER

Premium quality ballistic poly fabric is woven with elevated tenacity polyester thread in a 2x2 or 2x3 basket weave with yarn made of unusually high denier strength, typically from 840 denier to 1680 denier. Denier refers to the weight and thickness of the yarn, not necessarily to the strength of the fabric. The 2x2 "ballistic weave" is extraordinarily strong and lightweight, and resists abrasion and tearing. Ballistic poly fabric is great for high-use and extreme work applications.

### PATENTED POUCH HANDLES

Allow for simple belt adjustments and easy one-hand carrying, and convenient on-hook storage.

### HEAVY-DUTY STITCHING AND RIVETS

Bar-tack stitching and rivets used to reduce additional wear and to reinforce stress points for added durability.

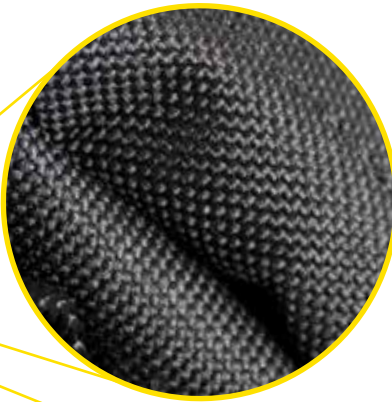
### MULTI-USE, EASY ACCESS POCKETS

Large main pockets and small side and interior pockets, allow for the carrying of a wide variety of tools.

TOOLS & SPECIALTY ITEMS

## GENERAL SOFT SIDE MATERIAL AND FEATURES

ECPL38



### POLYESTER

Quality polyester fabric is woven with thread that has been coated with a synthetic polymer in order to increase durability and fabric strength. Polyester is a versatile yarn and can easily be blended with other fibers to enhance specific properties that create materials with wear, and environmental resistance. Polyester fibers have high tenacity as well as low environmental absorption which makes it able to handle stressful usage and work environments.

### REINFORCED WEB HANDLES

Padded web carrying handles for comfort and convenience.

### HEAVY-DUTY STITCHING

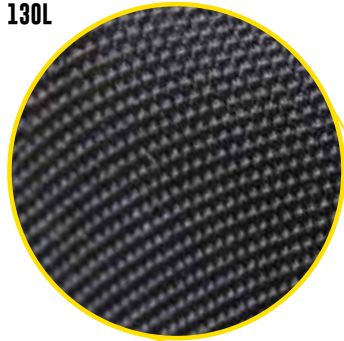
Heavy-duty, bar-tack stitching used to reduce additional wear and to reinforce stress points for added durability.

### MULTI-USE, EASY ACCESS POCKETS

Multi-use pockets inside and outside to help organize a wide variety of hand tools.

## GENERAL GLOVE MATERIAL AND FEATURES

130L

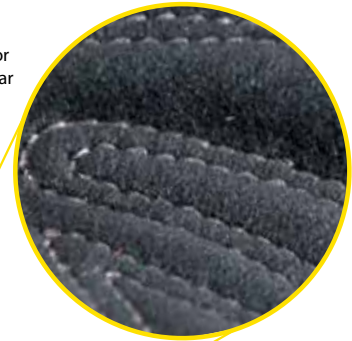


### SPANDEX BACK

Stretch spandex back has exceptional elasticity and breathability. Spandex is known for its strength, flexibility and fit.

### SYNTHETIC PALM

Synthetic palm material for increased abrasion and tear resistance.



Full neoprene cuff with textured TPR wrist strap with medical grade hook and loop closure, and textured pull-on tab.

Padded knuckles provide protection against bumps.



Reinforced fingertips for enhanced wear and durability.

Terry-wipe thumb helps gently remove sweat or debris from face.

Padded palm for enhanced wear and durability.

2030X



### WORK GLOVES

Take a quick look at our line of traditional work gloves and we're confident you'll find the hand protection that's right for you. We have all the top styles and materials representing both the DIY'er and the professional. Whether you're looking for Safety Cuffs, Drivers, String Knit, Latex Dipped or Chemical, we have the fit and coverage to defend your hands from harsh working conditions.

130L



### HIGH DEXTERITY WORK GLOVES

CLC Flex Grip gloves deliver an unmatched blend of style, function and quality. They're form-fitted for added dexterity and reduced fatigue. We use quality materials and time-tested construction methods to make this dynamically styled line the best-of-the-best in high dexterity gloves.

285L



### HYBRID WORK GLOVES

We've taken premium grade leather and combined it with breathable, stretch spandex to give the ultimate in comfort and performance. Our Hybrid line is truly a synergistic blend of materials that work better together providing durability and comfort along with a strikingly stylish look and solid feel.

## TOOL BELTS

PC 6770



### 3 PIECE ELECTRICIANS COMBO TOOL BELT

A premium quality 3-piece electrician's combo tool belt in ballistic poly fabric with a 3" padded, double-tongue roller buckle belt, cordless drill pocket, and 20 total pockets and sleeves for your favorite connectors and tools.

- Easy carry handle design provides simple adjustments, easy carrying and storage of apron without spilling contents.
- Totally versatile - all parts removable and interchangeable.
- Double layer of rugged, lightweight ballistic fabric.
- Metal clip holds all measuring tape sizes.
- Metal tape chain and tool snap. Pocket to hold cordless drill.
- 3" Wide padded belt for comfort with double tongue steel roller buckle.
- Snap-in hammer holder
- Fits waist sizes 29" - 46"

CAT. NO.	UPC	STD	MSTR	WT/STD
5609	084298560903	1	3	3.00#

## SUSPENDERS & BELTS

PC 6770

TOOLS & SPECIALTY ITEMS



### PADDED WORK SUSPENDERS

- 2" Wide foam-filled comfort pads.
- Heavy-duty clips front and rear.
- Comfortable heavy duty straps.
- Adjustable to fit all sizes



### PADDED CONSTRUCTION SUSPENDER

- Designed to transfer weight from waist to shoulders.
- Fully adjustable length, front and back to fit all sizes.
- Convenient quick fastening system.
- Heavy-duty padding for user comfort.
- Heavy-duty nylon web for extra strength.



### 5" WIDE PADDED COMFORT BELT

- Heavy-duty double layer lightweight fabric will not rot, crack, harden or mildew.
- 2" Double tongue metal roller buckle.
- Foam padding.
- Grip-Strip™ fastening system holds pouches securely in place.
- 5265 Fits waist sizes 29"-46" - 5625X fits waist sizes 47"-56"

CAT. NO.	UPC	STD	MSTR	WT/STD
5121	084298512100	1	3	0.65#

CAT. NO.	UPC	STD	MSTR	WT/STD
5122	084298512209	1	3	0.65#

CAT. NO.	UPC	STD	MSTR	WT/STD
5625	084298562518	1	3	0.95#
5625X	084298562532	1	3	0.95#

## TOOL HOLDERS

PC 6770



### 3 MULTI-PURPOSE CLIP ON ZIPPERED BAGS

- Made of polyester fabric.
- Includes 3 convenient sizes: 9" x 7", 7" x 6" and 6" x 5".
- Durable clip hangs on tool belts, belt loops, etc.
- Carry and organize all your misc. parts, tools and accessories.

CAT. NO.	UPC	STD	MSTR	WT/STD
1100	084298011009	1	3	0.29#

### TOOL POUCHES



#### 21 POCKET ZIPPERED PROFESSIONAL ELECTRICIAN'S TOOL POUCH

- Made of polyester fabric and ballistic binding.
- Zippered top flap to prevent spillage of tools when not in use.
- Ergonomic rubber handle and padded shoulder strap design for easy storage and the ideal way to carry loaded tool pouch.
- Zippered back pocket for 8" x 5" writing pad.
- Outside pocket to hold cell phone and 3 outside large screwdriver holders.

CAT. NO.	UPC	STD	MSTR	WT/STD
1509	084298015090	1	3	2.67#



#### SMALL POLY ZIPTOP™ UTILITY POUCH

- Made of polyester fabric and ballistic binding.
- Snap-back feature helps keep cover out of the way.
- Additional large front panel pocket.
- Zippered cover secures parts and tools in pouch and accommodates long-handled tools.

CAT. NO.	UPC	STD	MSTR	WT/STD
1523	084298015236	1	3	0.57#



#### MEDIUM POLY ZIPTOP™ UTILITY POUCH

- Double-pull zipper cover secures parts and tools in pouch while able to accommodate long-handled tools.
- Snap-back feature helps keep cover out of the way.
- Additional large front panel pocket.
- Slots, sleeves and straps to accommodate a variety of hand tools.
- 'J'-clip, tape strap, and measuring tape clip.
- Clip on or fits belts to 2 1/4" wide

CAT. NO.	UPC	STD	MSTR	WT/STD
1524	084298015243	1	3	0.92#



#### 9 POCKET POLY MULTI-PURPOSE "CARRY-ALL"

- Made of polyester fabric.
- Main zippered compartment with 7 internal pockets.
- 2 External pockets and 5 web loops.
- Carabiner for key chain, small tools, etc

CAT. NO.	UPC	STD	MSTR	WT/STD
1504	084298015045	1	3	0.58#



#### 12 POCKET PROFESSIONAL ELECTRICIAN'S TOOL POUCH

- Double layer of rugged, lightweight ballistic poly fabric.
- 3 Large main pockets and 3 smaller front pockets.
- 6 Large screwdriver holders.
- Electrical tape chain and tool snap.
- Metal clip holds all measuring tape sizes.
- Innovative handle design for easy adjustment and carrying.

CAT. NO.	UPC	STD	MSTR	WT/STD
5505	084298550508	1	3	0.92#



#### 20 POCKET BALLISTIC POLY PROFESSIONAL ELECTRICIAN'S TOOL POUCH

- Double layer of rugged, lightweight ballistic poly fabric.
- Handle and padded shoulder strap design for easy storage and the ideal way to carry loaded tool pouch.
- Heavy-duty tool snap and electrical tape strap.
- 6 Large screwdriver holders.
- Steel hammer loop.
- Adjustable shoulder strap.

CAT. NO.	UPC	STD	MSTR	WT/STD
5508	084298550805	1	3	1.92#

TOOLS & SPECIALTY ITEMS

## TOOL HOLDERS

PC 6770



### 4 POCKET POLY MULTI-PURPOSE TOOL HOLDER

- Made of polyester fabric.
- Versatile 3-way attachment for pants, web suspenders, work aprons, etc.
- Securely holds small tools or accessories like pliers, mini-flashlights, screwdrivers, etc.

CAT. NO.	UPC	STD	MSTR	WT/STD
1104	084298011047	1	3	0.19#



### DELUXE CORDLESS POLY DRILL HOLSTER

- Made of polyester fabric.
- Holds most brands of T-handle drills.
- Multi outer pockets and sleeves for complete bit organization.
- Safety strap with quick release buckle.
- Hook & loop backing to keep strap back when not in use.

CAT. NO.	UPC	STD	MSTR	WT/STD
5023	084298050237	1	3	0.58#



### LARGE CELL PHONE HOLDER

- Versatile 3-way attachment for belts, web suspenders, pants, etc.
- Holds most brands of large cell phones.
- Heavy-duty clip on back and padded inside to protect cell phones.
- Elastic side pockets for pens, pencils, small tools, etc.

CAT. NO.	UPC	STD	MSTR	WT/STD
5127	084298051272	1	3	0.21#

## SOFT SIDE TOOL CARRIERS

PC 6770



### 75 POCKET - TOOL BACKPACK

- Made of ballistic polyester fabric.
- Enough interior panels to hold a multitude of tools including: 14pc. wrench sets, electric drills, extension cords, pliers, screwdrivers and much more.
- 7" x 5" Multi-compartment plastic tray included.
- Carry it with adjustable padded shoulder straps or handles.
- 13"W x 17½"H x 9"D

CAT. NO.	UPC	STD	MSTR	WT/STD
1132	084298011320	1	3	4.83#



### 44 POCKET - DELUXE TOOL BACKPACK

- 36 Inside and 8 outside pockets to organize a wide variety of tools and accessories.
- Adjustable padded shoulder straps with slip-resistant material.
- Large pads on back for extra comfort.
- 2-way adjustable sternum strap.
- 13 1/4"W x 16"H x 8 1/2"

CAT. NO.	UPC	STD	MSTR	WT/STD
1134	084298011344	1	3	5.00#

## SOFT SIDE TOOL CARRIERS



### 15" LARGE TRAYTOTE™ BAG

- 13 Pocket outside and 10 inside to organize a wide range of tools and accessories.
- 13 1/2" x 9" Multi-compartment plastic parts tray included to organize small parts.
- Reinforced web carrying handles.
- Top opens wide for easy interior access.
- Heavy-duty stitching and bar tacking at all stress points.
- 15" L x 10" W x 12" H

CAT. NO.	UPC	STD	MSTR	WT/STD
1139	084298011399	1	3	3.50#



### 18 POCKET - DRAWSTRING BUCKET BAG™

- 6 large compartments for organizing and stowing small parts.
- 6 pockets outside and 6 inside for a variety of tools and accessories.
- Easy lock/release drawstring system.
- Soft bottom panel prevents tipping and spilling.
- 10" D x 7" H

CAT. NO.	UPC	STD	MSTR	WT/STD
1148	084298011481	1	3	1.00#



### 22 POCKET - 16" LARGE BIGMOUTH® TOOL TOTE

- 12 Pockets inside and 10 outside to organize tools and accessories.
- Opens wide for easy access to bag's contents.
- Padded reinforced web carrying handles and adjustable shoulder strap.
- Opens wide for easy access to bag's contents.
- Heavy duty stitching and bar tacking at all stress points.
- 16" L x 8 1/2" W x 10" H

CAT. NO.	UPC	STD	MSTR	WT/STD
1165	084298011658	1	3	3.08#



### 25 POCKET - 8" ELECTRICAL & MAINTENANCE TOOL CARRIER

- 7" x 5 1/2" Multi-compartment plastic parts tray included to organize small parts.
- Box-shaped design prevents tipping over.
- Pockets for drill bits and tips, testers, pliers, screwdrivers, etc.
- Extra padded carrying handle and adjustable shoulder strap.
- 8" L x 8" W x 16" H

CAT. NO.	UPC	STD	MSTR	WT/STD
1526	084298015267	1	3	2.75#



### 22 POCKET - 11" ELECTRICAL & MAINTENANCE TOOL CARRIER

- 8 3/4" x 6 1/2" Multi-compartment plastic tray included to organize small parts.
- 14 Multi-use outside pockets and 8 inside to organize a wide range of tools and accessories.
- Main divided pocket with elastic loops for large tools
- Box shaped design prevents tipping.
- Padded carrying handle and adjustable shoulder strap.
- Electrical tape strap.
- 11" L x 10" W x 19" H

CAT. NO.	UPC	STD	MSTR	WT/STD
1528	084298015281	1	3	5.50#



### 16 POCKET - 16" CENTER TRAY TOOL BAG

- 13 1/2" x 9" Multi-compartment plastic tray included, stores into middle compartment for easy access to the rest of bag contents.
- 8 Pockets outside and 8 inside to organize a wide range of tools and accessories.
- Main pocket with web loops to accommodate large tools.
- Extra padded carrying handles and adjustable shoulder strap.
- Metal tool snap and electrical tape strap.
- 16" L x 9" W x 9" H

CAT. NO.	UPC	STD	MSTR	WT/STD
1529	084298015298	1	3	2.50#

TOOLS & SPECIALTY ITEMS

## SOFT SIDE TOOL CARRIERS

PC 6770



**43 POCKET - 23" ELECTRICAL & MAINTENANCE TOOL CARRIER**

- 7" x 5½" Multi-compartment plastic tray included.
- 2 Window pockets for easy view of pocket contents, one removable and one stationary.
- Box-shaped design prevents tipping.
- Pockets for drill bits and tips, cell phone, electrical tester, electrical tape strap, etc.
- 23"L x 12"W x 15"H

CAT. NO.	UPC	STD	MSTR	WT/STD
1530	084298015304	1	3	3.20#



**23 POCKET - 16" TOTE BAG WITH TOP-SIDE PLASTIC TRAY**

- 10 Pockets inside and 13 pockets outside to organize tools and accessories.
- 10" x 3" Multi-compartment plastic tray to organize small parts, recessed in top for easy access.
- Padded web carrying handles and adjustable shoulder strap.
- 16"L x 8"W x 11"H

CAT. NO.	UPC	STD	MSTR	WT/STD
1534	084298015342	1	3	4.00#



**33 POCKET - 13" MULTI-COMPARTMENT TOOL CARRIER**

- 23 Pockets inside and 10 pockets outside to organize tools and accessories.
- Zippered side panel prevents spillage of tools when carrying or storing carrier.
- Vertical pockets keep tools in sight for quick access.
- Padded reinforced web carrying handles and adjustable shoulder strap.
- 13"L x 7"W x 13"H

CAT. NO.	UPC	STD	MSTR	WT/STD
1537	084298015373	1	3	4.00#

TOOLS & SPECIALTY ITEMS



**20 POCKET - 12" SOFTSIDED TOOL BOX**

- 12 Multi-use outside pockets and 8 inside pockets to organize a wide range of tools and accessories.
- Padded web carrying handle and adjustable shoulder strap.
- 8" x 3" Multi-compartment plastic tray to organize small parts or accessories.
- Zippered pocket to secure valuables.
- 12"L x 8½"W x 14"H

CAT. NO.	UPC	STD	MSTR	WT/STD
1570	084298015700	1	3	4.67#



**27 POCKET - 20" OPEN TOP SOFTSIDED TOOL BOX**

- Removable and adjustable partition slides into place to customize tool box to your storage needs.
- Padded adjustable shoulder strap.
- Wide open main compartment.
- Sturdy metal handle bar with molded foam grip for easy carrying.
- 20"L x 11"W x 11"H

CAT. NO.	UPC	STD	MSTR	WT/STD
1579	084298015793	1	3	7.00#



### TECH GEAR™ BAGS

#### TECH GEAR™ 53 POCKET - LIGHTED BACKPACK

Built-In LED light can be easily directed at work area or into tool carrier to help identify tools and parts. • 3 Levels of light output allow adjustment for wide area illumination or close-up work. • Light Output/Levels: 39 Lumens max., 3 Levels. • Dual compartment design for better-organized tool storage. • 2 Straps for cordless drill/driver and battery charger. • 28 Tool pockets, 14 accessory bit pockets and 11 multi-use pockets for your favorite tools, parts and accessories. • Carrying handles for easy transport. • Adjustable padded shoulders with sternum strap and back padding for comfort. • Large base pad feet to help reduce wear and abrasion. • Powered by 2 AAA batteries, included. • U.S. and Int'l Patents Pending. • 13"W x 16"H x 8"D.

CAT. NO.	UPC	STD	MSTR	WT/STD
L255	084298122552	1	3	4.95#

#### 29 POCKET - TECH GEAR™ LIGHTED 14" BIGMOUTH™ TOOL BAG

Built-in LED light can be easily directed at work area or into tool bag to help identify tools and parts. • 3 levels of light output allow adjustment for wide area illumination or close-up work. • Light Output/Levels: 39 Lumens max., 3 Levels. • BigMouth™ design gives easy access to tools and accessories. • 11 multi-use pockets inside and 18 outside to help you better organize your tools. • Padded web carrying handles and adjustable shoulder strap for comfortable and convenient no-hands transport. • Base pad feet to help reduce wear and abrasion. • Powered by two AAA batteries, included. • U.S. and Int'l Patents Pending. • 14"L x 8"W x 11.5"H

CAT. NO.	UPC	STD	MSTR	WT/STD
L230	084298122309	1	3	3.60#

#### 22 POCKET - TECH GEAR™ LIGHT HANDLE 15" OPEN TOP CARRIER

LED light handle can be easily directed at work area or into tool carrier to help identify tools and parts. • 3 levels of light output allow adjustment for wide area illumination or close-up work. • Light Output/Levels: 39 Lumens max., 3 Levels. • Ergonomic handle design helps reduce stress on hand and wrist. • Convenient open compartment for power tools and accessories. • 6 multi-use pockets inside and 16 outside to help organize a wide variety of hand tools. • Padded, adjustable shoulder strap for easy carrying. • Base pad feet to help reduce wear and abrasion. • Powered by two AAA batteries, included. • U.S. and Int'l Patents Pending. • 15"L x 8.5"W x 11.5"H

CAT. NO.	UPC	STD	MSTR	WT/STD
L234	084298122347	1	3	4.40#

#### 56 POCKET - TECH GEAR™ LIGHT HANDLE 18" DUAL COMPARTMENT TOOL CARRIER

Built-In LED light handle can be easily directed at work area or into tool carrier to help identify tools and parts. • 3 levels of light output allow adjustment for wide area illumination or close-up work. • Light Output/Levels: 39 Lumens max., 3 Levels. • Ergonomic handle design helps reduce stress on hand and wrist. • Features a compartment designed for power tools and another with pockets for hand tools and accessories. • 42 multi-use pockets inside and 14 outside to help organize a wide variety of hand tools. • 7" x 5½" multi-compartment plastic parts tray included. • Padded, adjustable shoulder strap. • Base pad feet to help reduce wear and abrasion. • Powered by two AAA batteries, included. • U.S. and Int'l Patents Pending. • 18"L x 10"W x 13"H

CAT. NO.	UPC	STD	MSTR	WT/STD
L245	084298122453	1	NA	8.15#

#### 17 POCKET - LIGHTED HANDLE 17" ROLLER BAG

• Telescoping LED lighted handle can be easily directed at work area or into tool carrier to help identify tools and parts. LED light can also illuminate your path while transporting the bag. • 3 levels of light output allow adjustment for wide area illumination or close-up work. • Sturdy telescoping handle extends for fast transport of heavy loads. • 6 Multi-use pockets inside and 11 outside to help organize a wide variety of hand tools. • Heavy-duty treaded wheels for easy bag movement over rough terrain. • Magnetic folding zipper top conveniently attaches to telescoping handle for full access to main compartment. • Large interior holds most large power tools and accessories. • Padded web carrying handles. • U.S. and Int'l Patents Pending. • Approx. 17"L x 9.5"W x 12.5"H.

CAT. NO.	UPC	STD	MSTR	WT/STD
L258	084298122583	1	3	9.35#



TOOLS & SPECIALTY ITEMS

## E-CHARGE

## PC 6770

**NEW STYLE**



### USB CHARGING BATTERY PACK



### LED LIGHT SYSTEM



### 36 POCKET LIGHTED USB CHARGING TOOL BACKPACK

USE THE INCLUDED BATTERY PACK TO CHARGE 2 USB DEVICES

- Use the included lithium battery as a USB charging source and to power the LED light system.
- 4 Internal charging wall pockets for tablets, smartphones, and small laptops.
- 2-Level, 200 Lumen LED light system with adjustable steel neck for lighting bag contents or work area.
- 31 Multi-use pockets inside, 5 pockets outside, and 4 additional loops and measuring tape clip to help organize a wide variety of hand tools.

CAT. NO.	UPC	STD	MSTR	WT/STD
ECPL38	084298231339	1	2	7.30#

## KNEELING MATS & KNEE PADS

## PC 6770

TOOLS & SPECIALTY ITEMS

### MEDIUM INDUSTRIAL KNEELING MAT (14" X 21")



- NBR material will not degrade with oil or petroleum contact.
- Unique handle location provides more useful kneeling area.
- Excellent shock absorption and cushioning properties.
- Silicone free material.
- 21" x 14"

CAT. NO.	UPC	STD	MSTR	WT/STD
302CLC	084298003028	1	3	2.08#

### LARGE INDUSTRIAL KNEELING MAT (28" X 16")



- NBR material will not degrade with oil or petroleum contact.
- Unique handle location provides more useful kneeling area.
- Excellent shock absorption and cushioning properties.
- Silicone free material.
- Beveled edge design.
- 28" x 16"

CAT. NO.	UPC	STD	MSTR	WT/STD
303CLC	084298003035	1	3	2.83#

### ULTRAFLEX® NON-SKID KNEEPADS



- Ultraflex® upper cap design for comfort and protection.
- Soft, flexible outer shell protects and grips most surfaces without scratching or scuffing.
- High density, closed-cell foam for all-day comfort.
- Slot-n-Dot™ strap connections.
- Memory-Flex™ synthetic rubber straps.
- One size fits all.

CAT. NO.	UPC	STD	MSTR	WT/STD
361CLC	084298003615	1	3	1.60#

### PROFESSIONAL KNEEPADS



- Thick ½" high density, closed cell foam for all day comfort.
- Breathable neoprene lower straps secure below the knee for comfort.
- Large caps are over sized for more protective coverage.
- Upper elastic strap with slide buckle fasteners for rapid fit.
- One size fits all

CAT. NO.	UPC	STD	MSTR	WT/STD
345CLC	084298003455	1	3	1.93#

## CLIMATE GEAR

## PC 6618



### YELLOW POLYESTER 3 PIECE RAIN SUIT

- Constructed with heavyweight 0.35mm PVC with polyester backing.
- Jacket, bib pants and detachable hood.
- Full cut sizes to fit over clothing.
- Rear mesh vents for breathability.
- Bib style pants with snap fly front and adjustable straps.
- Available in sizes: M-XL

CAT. NO.	UPC	SIZE	STD	MSTR	WT/STC
R101M	084298010132	M	1	6	3.43#
R101L	084298010149	L	1	6	3.43#
R101X	084298010156	XL	1	6	3.43#

### WORK GLOVES



#### ECONOMY SPLIT COWHIDE DRIVER

These traditional split cowhide driver work gloves have a Gunn-cut style palm and an open cuff with a shirred wrist.

CAT. NO.	UPC	SIZE	STD	MSTR	WT/STD
2054M	084298205439	M	1	12	0.32#
2054L	084298205446	L	1	12	0.34#
2054X	084298205453	XL	1	12	0.35#



#### PREMIUM TOP GRAIN COWHIDE DRIVER

These superior quality, top grain cowhide driver work gloves have a leather palm patch and a hook-and-loop closure wrist strap.

CAT. NO.	UPC	SIZE	STD	MSTR	WT/STD
2058M	084298205866	M	1	12	0.24#
2058L	084298205842	L	1	12	0.25#
2058X	084298205859	XL	1	12	0.26#



#### TOP GRAIN DEERSKIN DRIVER

Best quality, top grain deerskin driver work gloves with a Gunn-cut style palm and an open cuff with a shirred wrist.

CAT. NO.	UPC	SIZE	STD	MSTR	WT/STD
2063M	084298206337	M	1	12	0.25#
2063L	084298206344	L	1	12	0.26#
2063X	084298206351	XL	1	12	0.33#



#### TOP GRAIN COWHIDE DRIVER

Deluxe quality, top grain cowhide driver work gloves have a Gunn-cut style palm and an open cuff with a shirred wrist.

CAT. NO.	UPC	SIZE	STD	MSTR	WT/STD
2065M	084298206535	M	1	12	0.26#
2065L	084298206542	L	1	12	0.27#
2065X	084298206559	XL	1	12	0.28#



#### TOP GRAIN PIGSKIN DRIVER

Deluxe quality, top grain pigskin driver work gloves have a leather palm patch and an open cuff with a shirred wrist.

CAT. NO.	UPC	SIZE	STD	MSTR	WT/STD
2069M	084298206931	M	1	12	0.20#
2069L	084298206948	L	1	12	0.22#
2069X	084298206955	XL	1	12	0.23#



#### SPLIT COWHIDE WINTER GLOVES

These deluxe quality split cowhide winter driver work gloves have 80 gram polyester insulation, a Gunn-cut style palm, and an open cuff with a shirred wrist.

CAT. NO.	UPC	SIZE	STD	MSTR	WT/STD
2056M	084298205637	M	1	12	0.55#
2056L	084298205606	L	1	12	0.58#
2056X	084298205651	XL	1	12	0.61#



#### LATEX GRIPPER GLOVES

A quality cotton/polyester knit shell glove with a latex dip "gripper" palm finish and an elasticized knit wrist.

CAT. NO.	UPC	SIZE	STD	MSTR	WT/STD
2030M	084298203039	M	1	12	0.17#
2030L	084298203077	L	1	12	0.18#
2030X	084298203053	XL	1	12	0.20#



#### LATEX GRIPPER GLOVES 3-PACK

A 3-pack of our quality cotton/polyester knit shell gloves with a latex dip "gripper" palm finish and an elasticized knit wrist.

CAT. NO.	UPC	SIZE	STD	MSTR	WT/STD
P2030M	084298213038	M	1	12	0.65#
P2030L	084298203084	L	1	12	0.68#
P2030X	084298213052	XL	1	12	0.70#

TOOLS & SPECIALTY ITEMS

## WORK GLOVES

PC 6773



### T-TOUCH™ TECHNICAL SAFETY GLOVES

The lightweight black seamless stretch nylon/spandex glove shell is dipped with nitrile PU palm coating providing maximum comfort, dexterity, sensitivity, and tactility.

CAT. NO.	UPC	SIZE	STD	MSTR	WT/STD
2038M	084298203831	M	1	12	0.11#
2038L	084298203848	L	1	12	0.12#
2038X	084298203855	XL	1	12	0.13#



### BROWN JERSEY GLOVES

Standard weight cotton/polyester brown jersey work gloves with a knit wrist cuff.

CAT. NO.	UPC	SIZE	STD	MSTR	WT/STD
2008	084298200809	OSFA	1	12	0.13#



### ECONOMY COTTON/POLY STRING KNIT GLOVES

Traditional cotton/polyester string knit gloves or glove liner which can be worn on either hand.

CAT. NO.	UPC	SIZE	STD	MSTR	WT/STD
2010	084298201004	OSFA	1	12	0.11#



### FLEECE LINED COTTON JERSEY GLOVES

Heavyweight cotton/polyester black jersey winter work gloves with a red fleece lining and a overlock knit wrist cuff.

CAT. NO.	UPC	SIZE	STD	MSTR	WT/STD
2013	084298201301	OSFA	1	12	0.24#



### NITRILE DISPOSABLE GLOVES, NON-POWDERED, 100/BOX

4 mil. industrial grade, non-powdered, nitrile disposable gloves with rolled cuffs, can be worn on either hand.

CAT. NO.	UPC	SIZE	STD	MSTR	WT/STD
2322L	084298232244	L	1	12	1.75#
2322X	084298232251	XL	1	12	1.75#



### NITRILE DISPOSABLE GLOVES, NON-POWDER, 50/BOX

5 mil., deluxe quality, powder-free, nitrile industrial grade disposable gloves are puncture and abrasion resistant.

CAT. NO.	UPC	SIZE	STD	MSTR	WT/STD
2323L	084298232343	L	1	12	1.10#



### BLACK NITRILE DISPOSABLE GLOVES, NON-POWDERED, 100/BOX

Our 6 mil. deluxe quality, powder-free, nitrile disposable gloves with rolled cuffs and textured finish, can be worn on either hand.

CAT. NO.	UPC	SIZE	STD	MSTR	WT/STD
2337M	084298233739	M	1	12	1.44#
2337L	084298233746	L	1	12	1.53#
2337X	084298233753	XL	1	12	1.74#



### LATEX DISPOSABLE GLOVES, NON-POWDERED, 100/JAR

8 mil. Disposable latex gloves, superior quality, designed for the working professional.

CAT. NO.	UPC	SIZE	STD	MSTR	WT/STD
LG100	781002598602	OSFA	1	12	2.35#

TOOLS & SPECIALTY ITEMS

## FLEX GRIP HIGH DEXTERITY GLOVES

PC 6774

### WORKRIGHT OC™ GLOVES



- Padded synthetic palm material is soft and comfortable to wear.
- Open cuff design with textured pull-on tab for easy-on, easy-off.
- Textured fingertip pads provide added abrasion resistance.
- Padded knuckles for protection against bumps.
- Stretch spandex back for flexibility and fit.

CAT. NO.	UPC	SIZE	STD	MSTR	WT/STD
123M	084298812330	M	1	12	0.17#
123L	084298812361	L	1	12	0.17#
123X	084298812378	XL	1	12	0.18#

### WORKRIGHT WINTER™ GLOVES



- Cold weather insulated for warmth.
- Padded synthetic palm material is soft and comfortable to wear.
- Open cuff design with textured pull-on tab for easy-on, easy-off.
- Textured fingertip pads provide added abrasion resistance.
- Padded knuckles for protection against bumps.
- Stretch spandex back for flexibility and fit.

CAT. NO.	UPC	SIZE	STD	MSTR	WT/STD
L123L	084298812346	L	1	12	0.23#
L123X	084298812353	XL	1	12	0.23#

### WORKRIGHT™ GLOVES



- Padded synthetic palm material is soft and comfortable to wear.
- Elastic cuff with hook and loop closure and textured pull-on tab.
- Textured fingertip pads provide added abrasion resistance.
- Padded knuckles for protection against bumps.
- Stretch spandex back for flexibility and fit.

CAT. NO.	UPC	SIZE	STD	MSTR	WT/STD
124M	084298812439	M	1	12	0.19#
124L	084298812446	L	1	12	0.19#
124X	084298812453	XL	1	12	0.19#



### HIVISIBILITY™ GLOVES



- High visibility spandex with reflective fingertips and strap closure.
- 3 Touch screen finger tips for use with multiple devices.
- Padded synthetic palm material is soft and comfortable to wear.
- Open cuff design with textured pull-on tab for easy-on, easy-off.
- Padded knuckles for protection against bumps.
- Stretch spandex back for flexibility and fit.



CAT. NO.	UPC	SIZE	STD	MSTR	WT/STD
128M	084298812835	M	1	12	0.20#
128L	084298812842	L	1	12	0.21#
128X	084298812859	XL	1	12	0.22#

### SUBCONTRACTOR™ GLOVES



- Ring-Cut™ feature easily converts to "fingerless" glove of your choice.
- Padded synthetic palm material is soft and comfortable to wear.
- Elastic cuff with hook and loop closure and textured pull-on tab.
- Textured fingertip pads provide added abrasion resistance.
- Padded knuckles for protection against bumps.
- Stretch spandex back for flexibility and fit.

CAT. NO.	UPC	SIZE	STD	MSTR	WT/STD
130M	084298813030	M	1	12	0.22#
130L	084298813047	L	1	12	0.23#
130X	084298813054	XL	1	12	0.24#
130XX	084298813061	2XL	1	12	0.25#

### BOXER™ GLOVES



- Silicone palm print provides better grip on smooth surfaces.
- Padded synthetic palm material is soft and comfortable to wear.
- Elastic cuff with hook and loop closure and textured pull-on tab.
- Fingertip pads provide added abrasion resistance.
- Padded knuckles for protection against bumps.
- Stretch spandex back for flexibility and fit.

CAT. NO.	UPC	SIZE	STD	MSTR	WT/STD
135M	084298813535	M	1	12	0.22#
135L	084298813542	L	1	12	0.23#
135X	084298813559	XL	1	12	0.24#

### PRO FRAMER XC™ GLOVES



- XtraCoverage™ palm is reinforced for added abrasion resistance and better grip.
- Fingerless design for better dexterity and feel for small parts and nails.
- Padded fingers and knuckles for protection against bumps.
- Full neoprene cuff with medical grade hook and loop closure and textured pull-on tab.
- Stretch-Fit™ thumb and spandex back for flexibility and fit.
- Textured TPR wrist closure with secure hook and loop closure.

CAT. NO.	UPC	SIZE	STD	MSTR	WT/STD
140M	084298814037	M	1	12	0.25#
140L	084298814044	L	1	12	0.26#
140X	084298814051	XL	1	12	0.27#

TOOLS & SPECIALTY ITEMS

## HYBRID GLOVES

PC 6774



### TOP GRAIN DEERSKIN WITH REINFORCED PALM GLOVES

A premium quality deerskin glove, CLC Hybrid™ gloves combine supple leather with a breathable spandex back for durability and comfort, with a reinforced palm and fingertips, plus a neoprene wrist cuff to help keep debris out.

CAT. NO.	UPC	SIZE	STD	MSTR	WT/STD
285M	084298828539	M	1	12	0.38#
285L	084298828546	L	1	12	0.38#
285X	084298828553	XL	1	12	0.38#

TOOLS & SPECIALTY ITEMS

## CUT LEVEL 5 GLOVES

PC 6773



### CUT RESISTANT POLYURETHANE DIP GLOVES

The Cut Level 5 PU dip glove has a 4544 EN388 rating, the highest rating possible. The knit glove is engineered for exceptional cut protection and dexterity. The combination of HDPE, fiberglass, nylon, and polyurethane coating offers a new level of durability.

CAT. NO.	UPC	SIZE	STD	MSTR	WT/STD
2105M	084298210532	M	1	12	0.19#
2105L	084298210549	L	1	12	0.21#
2105X	084298210556	XL	1	12	0.22#



### CUT AND IMPACT RESISTANT NITRILE DIP GLOVES

The Cut Level 5 and Impact Resistant PU dip glove has a 4544 EN388 rating, the highest rating possible. The knit glove is engineered for exceptional cut protection and dexterity. The combination of HDPE, fiberglass, nylon, sandy nitrile coating, and TPR pads offers the next level of ultimate hand safety and durability.

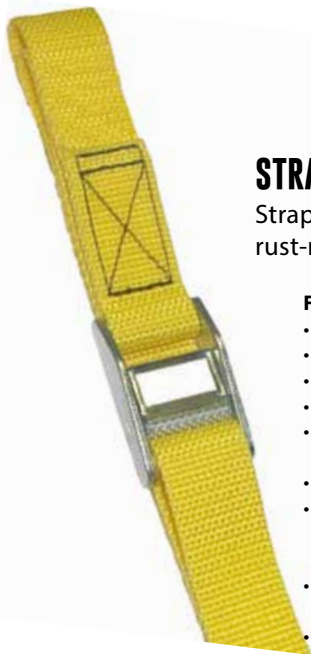
CAT. NO.	UPC	SIZE	STD	MSTR	WT/STD
2115M	084298211539	M	1	12	0.50#
2115L	084298211546	L	1	12	0.52#
2115X	084298211553	XL	1	12	0.53#



## WEB STRAPS

# STRAP-IT

## HEAVY-DUTY TIE-DOWN STRAPS



### STRAP-IT HEAVY DUTY TIE-DOWN STRAPS

Strap-Its™ are made of durable 1" wide webbing, that are available in various lengths, with sturdy rust-resistant, cam-lock buckles, and are designed for securing small loads and bundles.

#### FEATURES:

- Weatherproof
- 750 lb. Test webbing
- Strong 1" Heavy duty web construction
- Rustproof, cam-action buckle
- For securing contractor, diy, landscaping, maintenance and recreational loads
- Available in 2 piece bag (2WS Series)
- Also available as individual straps in convenient corrugated box of 12 (WS series)
- Display box comes with header card (WS00)
- Caution! Always wear eye protection

CAT. NO.	UPC	SIZE	COLOR	STD	MSTR	WT/STD
WS00	781002854739	-	Assorted	1		8.00#
WS02	781002241607	2'	Red	12	144	2.13#
WS04	781002241614	4'	Yellow	12	144	2.38#
WS06	781002241621	6'	Green	12	144	2.90#
WS08	781002241638	8'	Purple	12	144	3.45#
WS10	781002241645	10'	Blue	12	144	3.45#
WS12	781002241652	12'	Black	12	144	3.70#
2WS02	781002582113	2'	Red	1	12	0.37#
2WS04	781002582120	4'	Yellow	1	12	0.40#
2WS06	781002582137	6'	Green	1	12	0.51#
2WS08	781002582144	8'	Purple	1	12	0.57#
2WS10	781002582151	10'	Blue	1	12	0.66#
2WS12	781002582168	12'	Black	1	12	0.72#

#### WS00

Display Contains: 36 Web Straps (6 of each length)



#### 2WS02



Heavy-use Strap-It tie-down straps are now available in 6 popular color-coded lengths.

TOOLS & SPECIALTY ITEMS

## MERCHANDISING

Gloves, Bags and Accessories are individually packaged with hang tags and informative labels where applicable. Hang tags allow for versatile merchandising on your show room floor. You have the option to hang or place material on modular merchandisers, slatwall or pegboard for an appealing display. Additional merchandising materials are also available upon request.



**CLCBANNER**  
Showroom Banner 17" x 48"

TOOLS & SPECIALTY ITEMS



**C1091**  
2' Single Sided Merchandiser



**C1092**  
2' Double Sided Merchandiser



**GR01**  
2' Single Sided Glove Merchandiser

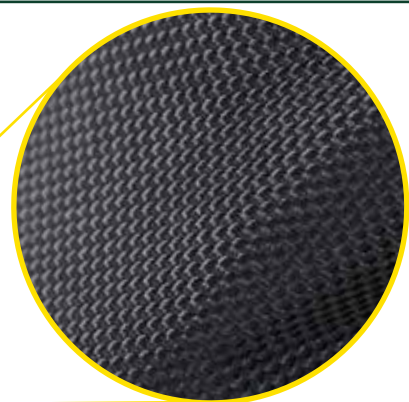






## GENERAL TOOL BELT MATERIAL AND FEATURES

5609



### BALLISTIC POLYESTER

Premium quality ballistic poly fabric is woven with elevated tenacity polyester thread in a 2x2 or 2x3 basket weave with yarn made of unusually high denier strength, typically from 840 denier to 1680 denier. Denier refers to the weight and thickness of the yarn, not necessarily to the strength of the fabric. The 2x2 "ballistic weave" is extraordinarily strong and lightweight, and resists abrasion and tearing. Ballistic poly fabric is great for high-use and extreme work applications.

### PATENTED POUCH HANDLES

Allow for simple belt adjustments and easy one-hand carrying, and convenient on-hook storage.

### HEAVY-DUTY STITCHING AND RIVETS

Bar-tack stitching and rivets used to reduce additional wear and to reinforce stress points for added durability.

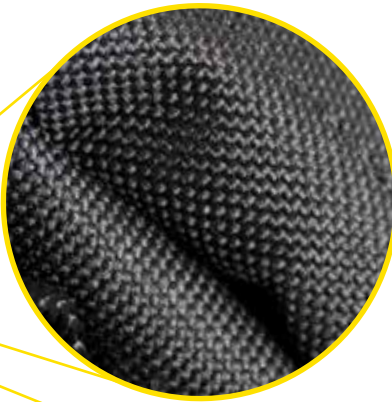
### MULTI-USE, EASY ACCESS POCKETS

Large main pockets and small side and interior pockets, allow for the carrying of a wide variety of tools.

TOOLS & SPECIALTY ITEMS

## GENERAL SOFT SIDE MATERIAL AND FEATURES

ECPL38



### POLYESTER

Quality polyester fabric is woven with thread that has been coated with a synthetic polymer in order to increase durability and fabric strength. Polyester is a versatile yarn and can easily be blended with other fibers to enhance specific properties that create materials with wear, and environmental resistance. Polyester fibers have high tenacity as well as low environmental absorption which makes it able to handle stressful usage and work environments.

### REINFORCED WEB HANDLES

Padded web carrying handles for comfort and convenience.

### HEAVY-DUTY STITCHING

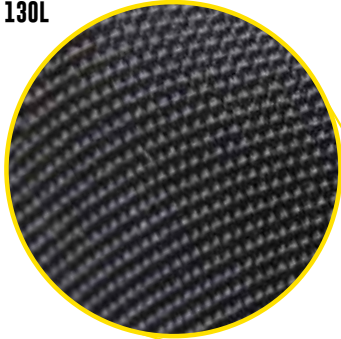
Heavy-duty, bar-tack stitching used to reduce additional wear and to reinforce stress points for added durability.

### MULTI-USE, EASY ACCESS POCKETS

Multi-use pockets inside and outside to help organize a wide variety of hand tools.

## GENERAL GLOVE MATERIAL AND FEATURES

130L

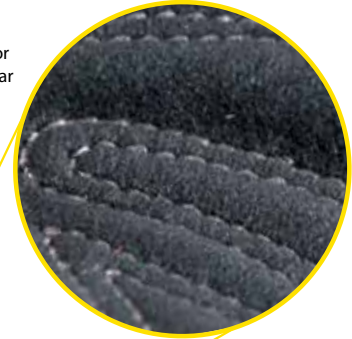


### SPANDEX BACK

Stretch spandex back has exceptional elasticity and breathability. Spandex is known for its strength, flexibility and fit.

### SYNTHETIC PALM

Synthetic palm material for increased abrasion and tear resistance.



Full neoprene cuff with textured TPR wrist strap with medical grade hook and loop closure, and textured pull-on tab.

Padded knuckles provide protection against bumps.



Reinforced fingertips for enhanced wear and durability.

Terry-wipe thumb helps gently remove sweat or debris from face.

Padded palm for enhanced wear and durability.

2030X



### WORK GLOVES

Take a quick look at our line of traditional work gloves and we're confident you'll find the hand protection that's right for you. We have all the top styles and materials representing both the DIY'er and the professional. Whether you're looking for Safety Cuffs, Drivers, String Knit, Latex Dipped or Chemical, we have the fit and coverage to defend your hands from harsh working conditions.

130L



### HIGH DEXTERITY WORK GLOVES

CLC Flex Grip gloves deliver an unmatched blend of style, function and quality. They're form-fitted for added dexterity and reduced fatigue. We use quality materials and time-tested construction methods to make this dynamically styled line the best-of-the-best in high dexterity gloves.

285L



### HYBRID WORK GLOVES

We've taken premium grade leather and combined it with breathable, stretch spandex to give the ultimate in comfort and performance. Our Hybrid line is truly a synergistic blend of materials that work better together providing durability and comfort along with a strikingly stylish look and solid feel.

## TOOL BELTS

PC 6770



### 3 PIECE ELECTRICIANS COMBO TOOL BELT

A premium quality 3-piece electrician's combo tool belt in ballistic poly fabric with a 3" padded, double-tongue roller buckle belt, cordless drill pocket, and 20 total pockets and sleeves for your favorite connectors and tools.

- Easy carry handle design provides simple adjustments, easy carrying and storage of apron without spilling contents.
- Totally versatile - all parts removable and interchangeable.
- Double layer of rugged, lightweight ballistic fabric.
- Metal clip holds all measuring tape sizes.
- Metal tape chain and tool snap. Pocket to hold cordless drill.
- 3" Wide padded belt for comfort with double tongue steel roller buckle.
- Snap-in hammer holder
- Fits waist sizes 29" - 46"

CAT. NO.	UPC	STD	MSTR	WT/STD
5609	084298560903	1	3	3.00#

## SUSPENDERS & BELTS

PC 6770

TOOLS & SPECIALTY ITEMS



### PADDED WORK SUSPENDERS

- 2" Wide foam-filled comfort pads.
- Heavy-duty clips front and rear.
- Comfortable heavy duty straps.
- Adjustable to fit all sizes



### PADDED CONSTRUCTION SUSPENDER

- Designed to transfer weight from waist to shoulders.
- Fully adjustable length, front and back to fit all sizes.
- Convenient quick fastening system.
- Heavy-duty padding for user comfort.
- Heavy-duty nylon web for extra strength.



### 5" WIDE PADDED COMFORT BELT

- Heavy-duty double layer lightweight fabric will not rot, crack, harden or mildew.
- 2" Double tongue metal roller buckle.
- Foam padding.
- Grip-Strip™ fastening system holds pouches securely in place.
- 5265 Fits waist sizes 29"-46" - 5625X fits waist sizes 47"-56"

CAT. NO.	UPC	STD	MSTR	WT/STD
5121	084298512100	1	3	0.65#

CAT. NO.	UPC	STD	MSTR	WT/STD
5122	084298512209	1	3	0.65#

CAT. NO.	UPC	STD	MSTR	WT/STD
5625	084298562518	1	3	0.95#
5625X	084298562532	1	3	0.95#

## TOOL HOLDERS

PC 6770



### 3 MULTI-PURPOSE CLIP ON ZIPPERED BAGS

- Made of polyester fabric.
- Includes 3 convenient sizes: 9" x 7", 7" x 6" and 6" x 5".
- Durable clip hangs on tool belts, belt loops, etc.
- Carry and organize all your misc. parts, tools and accessories.

CAT. NO.	UPC	STD	MSTR	WT/STD
1100	084298011009	1	3	0.29#

### TOOL POUCHES



#### 21 POCKET ZIPPERED PROFESSIONAL ELECTRICIAN'S TOOL POUCH

- Made of polyester fabric and ballistic binding.
- Zippered top flap to prevent spillage of tools when not in use.
- Ergonomic rubber handle and padded shoulder strap design for easy storage and the ideal way to carry loaded tool pouch.
- Zippered back pocket for 8" x 5" writing pad.
- Outside pocket to hold cell phone and 3 outside large screwdriver holders.

CAT. NO.	UPC	STD	MSTR	WT/STD
1509	084298015090	1	3	2.67#



#### SMALL POLY ZIPTOP™ UTILITY POUCH

- Made of polyester fabric and ballistic binding.
- Snap-back feature helps keep cover out of the way.
- Additional large front panel pocket.
- Zippered cover secures parts and tools in pouch and accommodates long-handled tools.

CAT. NO.	UPC	STD	MSTR	WT/STD
1523	084298015236	1	3	0.57#



#### MEDIUM POLY ZIPTOP™ UTILITY POUCH

- Double-pull zipper cover secures parts and tools in pouch while able to accommodate long-handled tools.
- Snap-back feature helps keep cover out of the way.
- Additional large front panel pocket.
- Slots, sleeves and straps to accommodate a variety of hand tools.
- 'J'-clip, tape strap, and measuring tape clip.
- Clip on or fits belts to 2 1/4" wide

CAT. NO.	UPC	STD	MSTR	WT/STD
1524	084298015243	1	3	0.92#



#### 9 POCKET POLY MULTI-PURPOSE "CARRY-ALL"

- Made of polyester fabric.
- Main zippered compartment with 7 internal pockets.
- 2 External pockets and 5 web loops.
- Carabiner for key chain, small tools, etc

CAT. NO.	UPC	STD	MSTR	WT/STD
1504	084298015045	1	3	0.58#



#### 12 POCKET PROFESSIONAL ELECTRICIAN'S TOOL POUCH

- Double layer of rugged, lightweight ballistic poly fabric.
- 3 Large main pockets and 3 smaller front pockets.
- 6 Large screwdriver holders.
- Electrical tape chain and tool snap.
- Metal clip holds all measuring tape sizes.
- Innovative handle design for easy adjustment and carrying.

CAT. NO.	UPC	STD	MSTR	WT/STD
5505	084298550508	1	3	0.92#



#### 20 POCKET BALLISTIC POLY PROFESSIONAL ELECTRICIAN'S TOOL POUCH

- Double layer of rugged, lightweight ballistic poly fabric.
- Handle and padded shoulder strap design for easy storage and the ideal way to carry loaded tool pouch.
- Heavy-duty tool snap and electrical tape strap.
- 6 Large screwdriver holders.
- Steel hammer loop.
- Adjustable shoulder strap.

CAT. NO.	UPC	STD	MSTR	WT/STD
5508	084298550805	1	3	1.92#

TOOLS & SPECIALTY ITEMS

## TOOL HOLDERS

PC 6770



### 4 POCKET POLY MULTI-PURPOSE TOOL HOLDER

- Made of polyester fabric.
- Versatile 3-way attachment for pants, web suspenders, work aprons, etc.
- Securely holds small tools or accessories like pliers, mini-flashlights, screwdrivers, etc.

CAT. NO.	UPC	STD	MSTR	WT/STD
1104	084298011047	1	3	0.19#



### DELUXE CORDLESS POLY DRILL HOLSTER

- Made of polyester fabric.
- Holds most brands of T-handle drills.
- Multi outer pockets and sleeves for complete bit organization.
- Safety strap with quick release buckle.
- Hook & loop backing to keep strap back when not in use.

CAT. NO.	UPC	STD	MSTR	WT/STD
5023	084298050237	1	3	0.58#



### LARGE CELL PHONE HOLDER

- Versatile 3-way attachment for belts, web suspenders, pants, etc.
- Holds most brands of large cell phones.
- Heavy-duty clip on back and padded inside to protect cell phones.
- Elastic side pockets for pens, pencils, small tools, etc.

CAT. NO.	UPC	STD	MSTR	WT/STD
5127	084298051272	1	3	0.21#

## SOFT SIDE TOOL CARRIERS

PC 6770



### 75 POCKET - TOOL BACKPACK

- Made of ballistic polyester fabric.
- Enough interior panels to hold a multitude of tools including: 14pc. wrench sets, electric drills, extension cords, pliers, screwdrivers and much more.
- 7" x 5" Multi-compartment plastic tray included.
- Carry it with adjustable padded shoulder straps or handles.
- 13"W x 17½"H x 9"D

CAT. NO.	UPC	STD	MSTR	WT/STD
1132	084298011320	1	3	4.83#

### 44 POCKET - DELUXE TOOL BACKPACK

- 36 Inside and 8 outside pockets to organize a wide variety of tools and accessories.
- Adjustable padded shoulder straps with slip-resistant material.
- Large pads on back for extra comfort.
- 2-way adjustable sternum strap.
- 13 1/4"W x 16"H x 8 1/2"

CAT. NO.	UPC	STD	MSTR	WT/STD
1134	084298011344	1	3	5.00#

TOOLS & SPECIALTY ITEMS

## SOFT SIDE TOOL CARRIERS

PC 6770



### 15" LARGE TRAYTOTE™ BAG

- 13 Pocket outside and 10 inside to organize a wide range of tools and accessories.
- 13 1/2" x 9" Multi-compartment plastic parts tray included to organize small parts.
- Reinforced web carrying handles.
- Top opens wide for easy interior access.
- Heavy-duty stitching and bar tacking at all stress points.
- 15" L x 10" W x 12" H

CAT. NO.	UPC	STD	MSTR	WT/STD
1139	084298011399	1	3	3.50#



### 18 POCKET - DRAWSTRING BUCKET BAG™

- 6 large compartments for organizing and stowing small parts.
- 6 pockets outside and 6 inside for a variety of tools and accessories.
- Easy lock/release drawstring system.
- Soft bottom panel prevents tipping and spilling.
- 10" D x 7" H

CAT. NO.	UPC	STD	MSTR	WT/STD
1148	084298011481	1	3	1.00#



### 22 POCKET - 16" LARGE BIGMOUTH® TOOL TOTE

- 12 Pockets inside and 10 outside to organize tools and accessories.
- Opens wide for easy access to bag's contents.
- Padded reinforced web carrying handles and adjustable shoulder strap.
- Opens wide for easy access to bag's contents.
- Heavy duty stitching and bar tacking at all stress points.
- 16" L x 8 1/2" W x 10" H

CAT. NO.	UPC	STD	MSTR	WT/STD
1165	084298011658	1	3	3.08#



### 25 POCKET - 8" ELECTRICAL & MAINTENANCE TOOL CARRIER

- 7" x 5 1/2" Multi-compartment plastic parts tray included to organize small parts.
- Box-shaped design prevents tipping over.
- Pockets for drill bits and tips, testers, pliers, screwdrivers, etc.
- Extra padded carrying handle and adjustable shoulder strap.
- 8" L x 8" W x 16" H

CAT. NO.	UPC	STD	MSTR	WT/STD
1526	084298015267	1	3	2.75#



### 22 POCKET - 11" ELECTRICAL & MAINTENANCE TOOL CARRIER

- 8 3/4" x 6 1/2" Multi-compartment plastic tray included to organize small parts.
- 14 Multi-use outside pockets and 8 inside to organize a wide range of tools and accessories.
- Main divided pocket with elastic loops for large tools
- Box shaped design prevents tipping.
- Padded carrying handle and adjustable shoulder strap.
- Electrical tape strap.
- 11" L x 10" W x 19" H

CAT. NO.	UPC	STD	MSTR	WT/STD
1528	084298015281	1	3	5.50#



### 16 POCKET - 16" CENTER TRAY TOOL BAG

- 13 1/2" x 9" Multi-compartment plastic tray included, stores into middle compartment for easy access to the rest of bag contents.
- 8 Pockets outside and 8 inside to organize a wide range of tools and accessories.
- Main pocket with web loops to accommodate large tools.
- Extra padded carrying handles and adjustable shoulder strap.
- Metal tool snap and electrical tape strap.
- 16" L x 9" W x 9" H

CAT. NO.	UPC	STD	MSTR	WT/STD
1529	084298015298	1	3	2.50#

TOOLS & SPECIALTY ITEMS

## SOFT SIDE TOOL CARRIERS

PC 6770



**43 POCKET - 23" ELECTRICAL & MAINTENANCE TOOL CARRIER**

- 7" x 5½" Multi-compartment plastic tray included.
- 2 Window pockets for easy view of pocket contents, one removable and one stationary.
- Box-shaped design prevents tipping.
- Pockets for drill bits and tips, cell phone, electrical tester, electrical tape strap, etc.
- 23"L x 12"W x 15"H

CAT. NO.	UPC	STD	MSTR	WT/STD
1530	084298015304	1	3	3.20#



**23 POCKET - 16" TOTE BAG WITH TOP-SIDE PLASTIC TRAY**

- 10 Pockets inside and 13 pockets outside to organize tools and accessories.
- 10" x 3" Multi-compartment plastic tray to organize small parts, recessed in top for easy access.
- Padded web carrying handles and adjustable shoulder strap.
- 16"L x 8"W x 11"H

CAT. NO.	UPC	STD	MSTR	WT/STD
1534	084298015342	1	3	4.00#



**33 POCKET - 13" MULTI-COMPARTMENT TOOL CARRIER**

- 23 Pockets inside and 10 pockets outside to organize tools and accessories.
- Zippered side panel prevents spillage of tools when carrying or storing carrier.
- Vertical pockets keep tools in sight for quick access.
- Padded reinforced web carrying handles and adjustable shoulder strap.
- 13"L x 7"W x 13"H

CAT. NO.	UPC	STD	MSTR	WT/STD
1537	084298015373	1	3	4.00#

TOOLS & SPECIALTY ITEMS



**20 POCKET - 12" SOFTSIDED TOOL BOX**

- 12 Multi-use outside pockets and 8 inside pockets to organize a wide range of tools and accessories.
- Padded web carrying handle and adjustable shoulder strap.
- 8" x 3" Multi-compartment plastic tray to organize small parts or accessories.
- Zippered pocket to secure valuables.
- 12"L x 8½"W x 14"H

CAT. NO.	UPC	STD	MSTR	WT/STD
1570	084298015700	1	3	4.67#



**27 POCKET - 20" OPEN TOP SOFTSIDED TOOL BOX**

- Removable and adjustable partition slides into place to customize tool box to your storage needs.
- Padded adjustable shoulder strap.
- Wide open main compartment.
- Sturdy metal handle bar with molded foam grip for easy carrying.
- 20"L x 11"W x 11"H

CAT. NO.	UPC	STD	MSTR	WT/STD
1579	084298015793	1	3	7.00#



### TECH GEAR™ BAGS

#### TECH GEAR™ 53 POCKET - LIGHTED BACKPACK

Built-In LED light can be easily directed at work area or into tool carrier to help identify tools and parts. • 3 Levels of light output allow adjustment for wide area illumination or close-up work. • Light Output/Levels: 39 Lumens max., 3 Levels. • Dual compartment design for better-organized tool storage. • 2 Straps for cordless drill/driver and battery charger. • 28 Tool pockets, 14 accessory bit pockets and 11 multi-use pockets for your favorite tools, parts and accessories. • Carrying handles for easy transport. • Adjustable padded shoulders with sternum strap and back padding for comfort. • Large base pad feet to help reduce wear and abrasion. • Powered by 2 AAA batteries, included. • U.S. and Int'l Patents Pending. • 13"W x 16"H x 8"D.

CAT. NO.	UPC	STD	MSTR	WT/STD
L255	084298122552	1	3	4.95#

#### 29 POCKET - TECH GEAR™ LIGHTED 14" BIGMOUTH™ TOOL BAG

Built-in LED light can be easily directed at work area or into tool bag to help identify tools and parts. • 3 levels of light output allow adjustment for wide area illumination or close-up work. • Light Output/Levels: 39 Lumens max., 3 Levels. • BigMouth™ design gives easy access to tools and accessories. • 11 multi-use pockets inside and 18 outside to help you better organize your tools. • Padded web carrying handles and adjustable shoulder strap for comfortable and convenient no-hands transport. • Base pad feet to help reduce wear and abrasion. • Powered by two AAA batteries, included. • U.S. and Int'l Patents Pending. • 14"L x 8"W x 11.5"H

CAT. NO.	UPC	STD	MSTR	WT/STD
L230	084298122309	1	3	3.60#

#### 22 POCKET - TECH GEAR™ LIGHT HANDLE 15" OPEN TOP CARRIER

LED light handle can be easily directed at work area or into tool carrier to help identify tools and parts. • 3 levels of light output allow adjustment for wide area illumination or close-up work. • Light Output/Levels: 39 Lumens max., 3 Levels. • Ergonomic handle design helps reduce stress on hand and wrist. • Convenient open compartment for power tools and accessories. • 6 multi-use pockets inside and 16 outside to help organize a wide variety of hand tools. • Padded, adjustable shoulder strap for easy carrying. • Base pad feet to help reduce wear and abrasion. • Powered by two AAA batteries, included. • U.S. and Int'l Patents Pending. • 15"L x 8.5"W x 11.5"H

CAT. NO.	UPC	STD	MSTR	WT/STD
L234	084298122347	1	3	4.40#

#### 56 POCKET - TECH GEAR™ LIGHT HANDLE 18" DUAL COMPARTMENT TOOL CARRIER

Built-In LED light handle can be easily directed at work area or into tool carrier to help identify tools and parts. • 3 levels of light output allow adjustment for wide area illumination or close-up work. • Light Output/Levels: 39 Lumens max., 3 Levels. • Ergonomic handle design helps reduce stress on hand and wrist. • Features a compartment designed for power tools and another with pockets for hand tools and accessories. • 42 multi-use pockets inside and 14 outside to help organize a wide variety of hand tools. • 7" x 5½" multi-compartment plastic parts tray included. • Padded, adjustable shoulder strap. • Base pad feet to help reduce wear and abrasion. • Powered by two AAA batteries, included. • U.S. and Int'l Patents Pending. • 18"L x 10"W x 13"H

CAT. NO.	UPC	STD	MSTR	WT/STD
L245	084298122453	1	NA	8.15#

#### 17 POCKET - LIGHTED HANDLE 17" ROLLER BAG

• Telescoping LED light handle can be easily directed at work area or into tool carrier to help identify tools and parts. LED light can also illuminate your path while transporting the bag. • 3 levels of light output allow adjustment for wide area illumination or close-up work. • Sturdy telescoping handle extends for fast transport of heavy loads. • 6 Multi-use pockets inside and 11 outside to help organize a wide variety of hand tools. • Heavy-duty treaded wheels for easy bag movement over rough terrain. • Magnetic folding zipper top conveniently attaches to telescoping handle for full access to main compartment. • Large interior holds most large power tools and accessories. • Padded web carrying handles. • U.S. and Int'l Patents Pending. • Approx. 17"L x 9.5"W x 12.5"H.

CAT. NO.	UPC	STD	MSTR	WT/STD
L258	084298122583	1	3	9.35#



TOOLS & SPECIALTY ITEMS

## E-CHARGE

## PC 6770

**NEW STYLE**



### USB CHARGING BATTERY PACK



### LED LIGHT SYSTEM



### 36 POCKET LIGHTED USB CHARGING TOOL BACKPACK

USE THE INCLUDED BATTERY PACK TO CHARGE 2 USB DEVICES

- Use the included lithium battery as a USB charging source and to power the LED light system.
- 4 Internal charging wall pockets for tablets, smartphones, and small laptops.
- 2-Level, 200 Lumen LED light system with adjustable steel neck for lighting bag contents or work area.
- 31 Multi-use pockets inside, 5 pockets outside, and 4 additional loops and measuring tape clip to help organize a wide variety of hand tools.

CAT. NO.	UPC	STD	MSTR	WT/STD
ECPL38	084298231339	1	2	7.30#

## KNEELING MATS & KNEE PADS

## PC 6770

TOOLS & SPECIALTY ITEMS

### MEDIUM INDUSTRIAL KNEELING MAT (14" X 21")



- NBR material will not degrade with oil or petroleum contact.
- Unique handle location provides more useful kneeling area.
- Excellent shock absorption and cushioning properties.
- Silicone free material.
- 21" x 14"

CAT. NO.	UPC	STD	MSTR	WT/STD
302CLC	084298003028	1	3	2.08#

### LARGE INDUSTRIAL KNEELING MAT (28" X 16")



- NBR material will not degrade with oil or petroleum contact.
- Unique handle location provides more useful kneeling area.
- Excellent shock absorption and cushioning properties.
- Silicone free material.
- Beveled edge design.
- 28" x 16"

CAT. NO.	UPC	STD	MSTR	WT/STD
303CLC	084298003035	1	3	2.83#

### ULTRAFLEX® NON-SKID KNEEPADS



- Ultraflex® upper cap design for comfort and protection.
- Soft, flexible outer shell protects and grips most surfaces without scratching or scuffing.
- High density, closed-cell foam for all-day comfort.
- Slot-n-Dot™ strap connections.
- Memory-Flex™ synthetic rubber straps.
- One size fits all.

CAT. NO.	UPC	STD	MSTR	WT/STD
361CLC	084298003615	1	3	1.60#

### PROFESSIONAL KNEEPADS



- Thick ½" high density, closed cell foam for all day comfort.
- Breathable neoprene lower straps secure below the knee for comfort.
- Large caps are over sized for more protective coverage.
- Upper elastic strap with slide buckle fasteners for rapid fit.
- One size fits all

CAT. NO.	UPC	STD	MSTR	WT/STD
345CLC	084298003455	1	3	1.93#

## CLIMATE GEAR

## PC 6618



### YELLOW POLYESTER 3 PIECE RAIN SUIT

- Constructed with heavyweight 0.35mm PVC with polyester backing.
- Jacket, bib pants and detachable hood.
- Full cut sizes to fit over clothing.
- Rear mesh vents for breathability.
- Bib style pants with snap fly front and adjustable straps.
- Available in sizes: M-XL

CAT. NO.	UPC	SIZE	STD	MSTR	WT/STC
R101M	084298010132	M	1	6	3.43#
R101L	084298010149	L	1	6	3.43#
R101X	084298010156	XL	1	6	3.43#

### WORK GLOVES



#### ECONOMY SPLIT COWHIDE DRIVER

These traditional split cowhide driver work gloves have a Gunn-cut style palm and an open cuff with a shirred wrist.

CAT. NO.	UPC	SIZE	STD	MSTR	WT/STD
2054M	084298205439	M	1	12	0.32#
2054L	084298205446	L	1	12	0.34#
2054X	084298205453	XL	1	12	0.35#



#### PREMIUM TOP GRAIN COWHIDE DRIVER

These superior quality, top grain cowhide driver work gloves have a leather palm patch and a hook-and-loop closure wrist strap.

CAT. NO.	UPC	SIZE	STD	MSTR	WT/STD
2058M	084298205866	M	1	12	0.24#
2058L	084298205842	L	1	12	0.25#
2058X	084298205859	XL	1	12	0.26#



#### TOP GRAIN DEERSKIN DRIVER

Best quality, top grain deerskin driver work gloves with a Gunn-cut style palm and an open cuff with a shirred wrist.

CAT. NO.	UPC	SIZE	STD	MSTR	WT/STD
2063M	084298206337	M	1	12	0.25#
2063L	084298206344	L	1	12	0.26#
2063X	084298206351	XL	1	12	0.33#



#### TOP GRAIN COWHIDE DRIVER

Deluxe quality, top grain cowhide driver work gloves have a Gunn-cut style palm and an open cuff with a shirred wrist.

CAT. NO.	UPC	SIZE	STD	MSTR	WT/STD
2065M	084298206535	M	1	12	0.26#
2065L	084298206542	L	1	12	0.27#
2065X	084298206559	XL	1	12	0.28#



#### TOP GRAIN PIGSKIN DRIVER

Deluxe quality, top grain pigskin driver work gloves have a leather palm patch and an open cuff with a shirred wrist.

CAT. NO.	UPC	SIZE	STD	MSTR	WT/STD
2069M	084298206931	M	1	12	0.20#
2069L	084298206948	L	1	12	0.22#
2069X	084298206955	XL	1	12	0.23#



#### SPLIT COWHIDE WINTER GLOVES

These deluxe quality split cowhide winter driver work gloves have 80 gram polyester insulation, a Gunn-cut style palm, and an open cuff with a shirred wrist.

CAT. NO.	UPC	SIZE	STD	MSTR	WT/STD
2056M	084298205637	M	1	12	0.55#
2056L	084298205606	L	1	12	0.58#
2056X	084298205651	XL	1	12	0.61#



#### LATEX GRIPPER GLOVES

A quality cotton/polyester knit shell glove with a latex dip "gripper" palm finish and an elasticized knit wrist.

CAT. NO.	UPC	SIZE	STD	MSTR	WT/STD
2030M	084298203039	M	1	12	0.17#
2030L	084298203077	L	1	12	0.18#
2030X	084298203053	XL	1	12	0.20#



#### LATEX GRIPPER GLOVES 3-PACK

A 3-pack of our quality cotton/polyester knit shell gloves with a latex dip "gripper" palm finish and an elasticized knit wrist.

CAT. NO.	UPC	SIZE	STD	MSTR	WT/STD
P2030M	084298213038	M	1	12	0.65#
P2030L	084298203084	L	1	12	0.68#
P2030X	084298213052	XL	1	12	0.70#

TOOLS & SPECIALTY ITEMS

## WORK GLOVES

PC 6773



### T-TOUCH™ TECHNICAL SAFETY GLOVES

The lightweight black seamless stretch nylon/spandex glove shell is dipped with nitrile PU palm coating providing maximum comfort, dexterity, sensitivity, and tactility.

CAT. NO.	UPC	SIZE	STD	MSTR	WT/STD
2038M	084298203831	M	1	12	0.11#
2038L	084298203848	L	1	12	0.12#
2038X	084298203855	XL	1	12	0.13#



### BROWN JERSEY GLOVES

Standard weight cotton/polyester brown jersey work gloves with a knit wrist cuff.

CAT. NO.	UPC	SIZE	STD	MSTR	WT/STD
2008	084298200809	OSFA	1	12	0.13#



### ECONOMY COTTON/POLY STRING KNIT GLOVES

Traditional cotton/polyester string knit gloves or glove liner which can be worn on either hand.

CAT. NO.	UPC	SIZE	STD	MSTR	WT/STD
2010	084298201004	OSFA	1	12	0.11#



### FLEECE LINED COTTON JERSEY GLOVES

Heavyweight cotton/polyester black jersey winter work gloves with a red fleece lining and a overlock knit wrist cuff.

CAT. NO.	UPC	SIZE	STD	MSTR	WT/STD
2013	084298201301	OSFA	1	12	0.24#



### NITRILE DISPOSABLE GLOVES, NON-POWDERED, 100/BOX

4 mil. industrial grade, non-powdered, nitrile disposable gloves with rolled cuffs, can be worn on either hand.

CAT. NO.	UPC	SIZE	STD	MSTR	WT/STD
2322L	084298232244	L	1	12	1.75#
2322X	084298232251	XL	1	12	1.75#



### NITRILE DISPOSABLE GLOVES, NON-POWDER, 50/BOX

5 mil., deluxe quality, powder-free, nitrile industrial grade disposable gloves are puncture and abrasion resistant.

CAT. NO.	UPC	SIZE	STD	MSTR	WT/STD
2323L	084298232343	L	1	12	1.10#



### BLACK NITRILE DISPOSABLE GLOVES, NON-POWDERED, 100/BOX

Our 6 mil. deluxe quality, powder-free, nitrile disposable gloves with rolled cuffs and textured finish, can be worn on either hand.

CAT. NO.	UPC	SIZE	STD	MSTR	WT/STD
2337M	084298233739	M	1	12	1.44#
2337L	084298233746	L	1	12	1.53#
2337X	084298233753	XL	1	12	1.74#



### LATEX DISPOSABLE GLOVES, NON-POWDERED, 100/JAR

8 mil. Disposable latex gloves, superior quality, designed for the working professional.

CAT. NO.	UPC	SIZE	STD	MSTR	WT/STD
LG100	781002598602	OSFA	1	12	2.35#

TOOLS & SPECIALTY ITEMS

## FLEX GRIP HIGH DEXTERITY GLOVES

PC 6774

### WORKRIGHT OC™ GLOVES



- Padded synthetic palm material is soft and comfortable to wear.
- Open cuff design with textured pull-on tab for easy-on, easy-off.
- Textured fingertip pads provide added abrasion resistance.
- Padded knuckles for protection against bumps.
- Stretch spandex back for flexibility and fit.

CAT. NO.	UPC	SIZE	STD	MSTR	WT/STD
123M	084298812330	M	1	12	0.17#
123L	084298812361	L	1	12	0.17#
123X	084298812378	XL	1	12	0.18#

### WORKRIGHT WINTER™ GLOVES



- Cold weather insulated for warmth.
- Padded synthetic palm material is soft and comfortable to wear.
- Open cuff design with textured pull-on tab for easy-on, easy-off.
- Textured fingertip pads provide added abrasion resistance.
- Padded knuckles for protection against bumps.
- Stretch spandex back for flexibility and fit.

CAT. NO.	UPC	SIZE	STD	MSTR	WT/STD
L123L	084298812346	L	1	12	0.23#
L123X	084298812353	XL	1	12	0.23#

### WORKRIGHT™ GLOVES



- Padded synthetic palm material is soft and comfortable to wear.
- Elastic cuff with hook and loop closure and textured pull-on tab.
- Textured fingertip pads provide added abrasion resistance.
- Padded knuckles for protection against bumps.
- Stretch spandex back for flexibility and fit.

CAT. NO.	UPC	SIZE	STD	MSTR	WT/STD
124M	084298812439	M	1	12	0.19#
124L	084298812446	L	1	12	0.19#
124X	084298812453	XL	1	12	0.19#



### HIVISIBILITY™ GLOVES



- High visibility spandex with reflective fingertips and strap closure.
- 3 Touch screen finger tips for use with multiple devices.
- Padded synthetic palm material is soft and comfortable to wear.
- Open cuff design with textured pull-on tab for easy-on, easy-off.
- Padded knuckles for protection against bumps.
- Stretch spandex back for flexibility and fit.

CAT. NO.	UPC	SIZE	STD	MSTR	WT/STD
128M	084298812835	M	1	12	0.20#
128L	084298812842	L	1	12	0.21#
128X	084298812859	XL	1	12	0.22#



### SUBCONTRACTOR™ GLOVES



- Ring-Cut™ feature easily converts to "fingerless" glove of your choice.
- Padded synthetic palm material is soft and comfortable to wear.
- Elastic cuff with hook and loop closure and textured pull-on tab.
- Textured fingertip pads provide added abrasion resistance.
- Padded knuckles for protection against bumps.
- Stretch spandex back for flexibility and fit.

CAT. NO.	UPC	SIZE	STD	MSTR	WT/STD
130M	084298813030	M	1	12	0.22#
130L	084298813047	L	1	12	0.23#
130X	084298813054	XL	1	12	0.24#
130XX	084298813061	2XL	1	12	0.25#

### BOXER™ GLOVES



- Silicone palm print provides better grip on smooth surfaces.
- Padded synthetic palm material is soft and comfortable to wear.
- Elastic cuff with hook and loop closure and textured pull-on tab.
- Fingertip pads provide added abrasion resistance.
- Padded knuckles for protection against bumps.
- Stretch spandex back for flexibility and fit.

CAT. NO.	UPC	SIZE	STD	MSTR	WT/STD
135M	084298813535	M	1	12	0.22#
135L	084298813542	L	1	12	0.23#
135X	084298813559	XL	1	12	0.24#

### PRO FRAMER XC™ GLOVES



- XtraCoverage™ palm is reinforced for added abrasion resistance and better grip.
- Fingerless design for better dexterity and feel for small parts and nails.
- Padded fingers and knuckles for protection against bumps.
- Full neoprene cuff with medical grade hook and loop closure and textured pull-on tab.
- Stretch-Fit™ thumb and spandex back for flexibility and fit.
- Textured TPR wrist closure with secure hook and loop closure.

CAT. NO.	UPC	SIZE	STD	MSTR	WT/STD
140M	084298814037	M	1	12	0.25#
140L	084298814044	L	1	12	0.26#
140X	084298814051	XL	1	12	0.27#

TOOLS & SPECIALTY ITEMS

## HYBRID GLOVES

PC 6774



### TOP GRAIN DEERSKIN WITH REINFORCED PALM GLOVES

A premium quality deerskin glove, CLC Hybrid™ gloves combine supple leather with a breathable spandex back for durability and comfort, with a reinforced palm and fingertips, plus a neoprene wrist cuff to help keep debris out.

CAT. NO.	UPC	SIZE	STD	MSTR	WT/STD
285M	084298828539	M	1	12	0.38#
285L	084298828546	L	1	12	0.38#
285X	084298828553	XL	1	12	0.38#

TOOLS & SPECIALTY ITEMS

## CUT LEVEL 5 GLOVES

PC 6773



### CUT RESISTANT POLYURETHANE DIP GLOVES

The Cut Level 5 PU dip glove has a 4544 EN388 rating, the highest rating possible. The knit glove is engineered for exceptional cut protection and dexterity. The combination of HDPE, fiberglass, nylon, and polyurethane coating offers a new level of durability.

CAT. NO.	UPC	SIZE	STD	MSTR	WT/STD
2105M	084298210532	M	1	12	0.19#
2105L	084298210549	L	1	12	0.21#
2105X	084298210556	XL	1	12	0.22#



### CUT AND IMPACT RESISTANT NITRILE DIP GLOVES

The Cut Level 5 and Impact Resistant PU dip glove has a 4544 EN388 rating, the highest rating possible. The knit glove is engineered for exceptional cut protection and dexterity. The combination of HDPE, fiberglass, nylon, sandy nitrile coating, and TPR pads offers the next level of ultimate hand safety and durability.

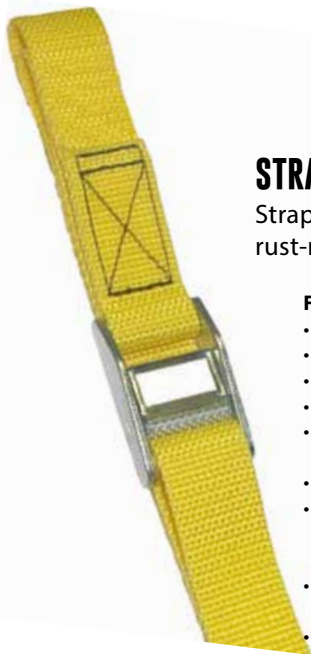
CAT. NO.	UPC	SIZE	STD	MSTR	WT/STD
2115M	084298211539	M	1	12	0.50#
2115L	084298211546	L	1	12	0.52#
2115X	084298211553	XL	1	12	0.53#



## WEB STRAPS

# STRAP-IT

HEAVY-DUTY TIE-DOWN STRAPS



### STRAP-IT HEAVY DUTY TIE-DOWN STRAPS

Strap-Its™ are made of durable 1" wide webbing, that are available in various lengths, with sturdy rust-resistant, cam-lock buckles, and are designed for securing small loads and bundles.

**FEATURES:**

- Weatherproof
- 750 lb. Test webbing
- Strong 1" Heavy duty web construction
- Rustproof, cam-action buckle
- For securing contractor, diy, landscaping, maintenance and recreational loads
- Available in 2 piece bag (2WS Series)
- Also available as individual straps in convenient corrugated box of 12 (WS series)
- Display box comes with header card (WS00)
- Caution! Always wear eye protection

CAT. NO.	UPC	SIZE	COLOR	STD	MSTR	WT/STD
WS00	781002854739	-	Assorted	1		8.00#
WS02	781002241607	2'	Red	12	144	2.13#
WS04	781002241614	4'	Yellow	12	144	2.38#
WS06	781002241621	6'	Green	12	144	2.90#
WS08	781002241638	8'	Purple	12	144	3.45#
WS10	781002241645	10'	Blue	12	144	3.45#
WS12	781002241652	12'	Black	12	144	3.70#
2WS02	781002582113	2'	Red	1	12	0.37#
2WS04	781002582120	4'	Yellow	1	12	0.40#
2WS06	781002582137	6'	Green	1	12	0.51#
2WS08	781002582144	8'	Purple	1	12	0.57#
2WS10	781002582151	10'	Blue	1	12	0.66#
2WS12	781002582168	12'	Black	1	12	0.72#

**WS00**

Display Contains: 36 Web Straps (6 of each length)



**2WS02**



Heavy-use Strap-It tie-down straps are now available in 6 popular color-coded lengths.

TOOLS & SPECIALTY ITEMS

## MERCHANDISING

Gloves, Bags and Accessories are individually packaged with hang tags and informative labels where applicable. Hang tags allow for versatile merchandising on your show room floor. You have the option to hang or place material on modular merchandisers, slatwall or pegboard for an appealing display. Additional merchandising materials are also available upon request.



**CLCBANNER**  
Showroom Banner 17" x 48"

TOOLS & SPECIALTY ITEMS



**C1091**  
2' Single Sided Merchandiser



**C1092**  
2' Double Sided Merchandiser



**GR01**  
2' Single Sided Glove Merchandiser

