

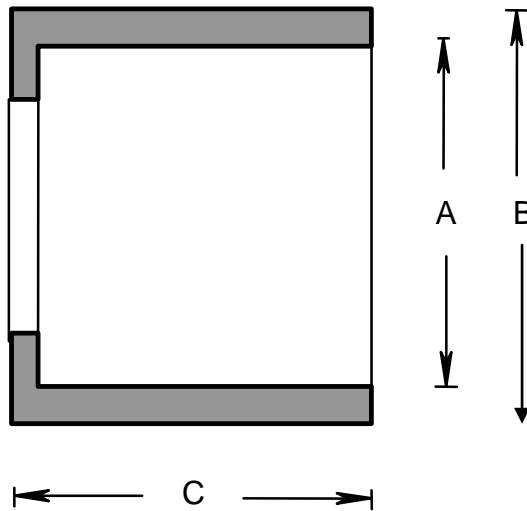
RIGID PVC CONDUIT FITTINGS - KRALOY

ISSUE DATE:  
DATE D'EMISSION: 2009 11 15

REDUCER BUSHINGS

SUPERCEDES:  
REPLACE: 2004 05 15

3



PRODUCT CODE	PART NUMBER	NOMINAL SIZE		A		B		C	
		(in)	(mm)	(in)	(mm)	(in)	(mm)	(in)	(mm)
078353	MR0705	3/4 X 1/2	21 X 16	0.840	21	1.050	27	0.635	26
078354	MR1007	1 X 3/4	27 X 21	1.050	27	1.305	33	0.810	21
078355	MR1005	1 X 1/2	27 X 16	0.840	21	1.305	33	0.810	21
078356	MR1207	1 1/4 X 3/4	35 X 21	1.050	27	1.660	42	1.110	28
078357	MR1210	1 1/4 X 1	35 X 27	1.305	33	1.660	42	1.110	28
078358	MR1507	1 1/2 X 3/4	41 X 21	1.050	27	1.885	48	1.280	56
078359	MR1510	1 1/2 X 1	41 X 27	1.305	33	1.885	48	1.280	56
078360	MR1512	1 1/2 X 1 1/4	41 X 35	1.660	42	1.885	48	1.280	56
078361	MR2010	2 X 1	53 X 27	1.305	33	2.360	60	1.695	43
078362	MR2015	2 X 1 1/2	53 X 35	1.660	42	2.360	60	1.695	43
078363	MR2012	2 X 1 1/4	53 X 41	1.885	48	2.360	60	1.695	43
078364	MR2520	2 1/2 X 2	63 X 53	2.360	60	2.900	73	1.750	45
078365	MR3020	3 X 2	78 X 53	2.360	60	3.500	89	1.895	48
078366	MR3025	3 X 2 1/2	78 X 63	2.900	73	3.500	89	1.895	48
078367	MR4030	4 X 3	103 X 78	3.470	89	4.495	142	2.125	54
078368	MR4035	4 X 3 1/2	103 X 91	3.890	102	4.495	142	2.125	54
078369	MR4020	4 X 2	103 X 53	2.360	60	4.495	142	2.125	54
178122*	MR0705	3/4 X 1/2	21 X 16	0.840	21	1.050	27	0.635	26
178132*	MR1007	1 X 3/4	27 X 21	1.050	27	1.305	33	0.810	21
178133*	MR1210	1 1/4 X 1	35 X 27	1.305	33	1.660	42	1.110	28
178155*	MR1512	1 1/2 X 1 1/4	41 X 35	1.660	42	1.885	48	1.280	56
178156*	MR2012	2 X 1 1/2	53 X 41	1.885	48	2.360	60	1.695	43
178157*	MR2520	2 1/2 X 2	63 X 53	2.360	60	2.900	73	1.750	45

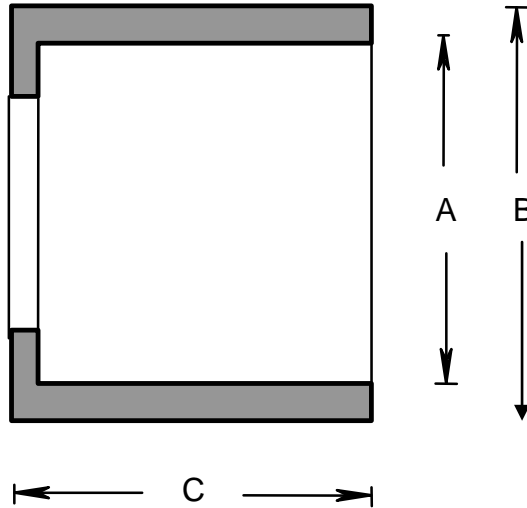
\* Bulk Packed for Pacific Circle

RIGID PVC CONDUIT FITTINGS - KRALOY

ISSUE DATE:  
DATE D'EMISSION: 2009 11 15

REDUCER BUSHINGS

SUPERCEDES:  
REPLACE: 2004 05 15



PRODUCT CODE	PART NUMBER	NOMINAL SIZE		A		B		C	
		(in)	(mm)	(in)	(mm)	(in)	(mm)	(in)	(mm)
078353	MR0705	3/4 X 1/2	21 X 16	0.840	21	1.050	27	0.635	26
078354	MR1007	1 X 3/4	27 X 21	1.050	27	1.305	33	0.810	21
078355	MR1005	1 X 1/2	27 X 16	0.840	21	1.305	33	0.810	21
078356	MR1207	1 1/4 X 3/4	35 X 21	1.050	27	1.660	42	1.110	28
078357	MR1210	1 1/4 X 1	35 X 27	1.305	33	1.660	42	1.110	28
078358	MR1507	1 1/2 X 3/4	41 X 21	1.050	27	1.885	48	1.280	56
078359	MR1510	1 1/2 X 1	41 X 27	1.305	33	1.885	48	1.280	56
078360	MR1512	1 1/2 X 1 1/4	41 X 35	1.660	42	1.885	48	1.280	56
078361	MR2010	2 X 1	53 X 27	1.305	33	2.360	60	1.695	43
078362	MR2015	2 X 1 1/2	53 X 35	1.660	42	2.360	60	1.695	43
078363	MR2012	2 X 1 1/4	53 X 41	1.885	48	2.360	60	1.695	43
078364	MR2520	2 1/2 X 2	63 X 53	2.360	60	2.900	73	1.750	45
078365	MR3020	3 X 2	78 X 53	2.360	60	3.500	89	1.895	48
078366	MR3025	3 X 2 1/2	78 X 63	2.900	73	3.500	89	1.895	48
078367	MR4030	4 X 3	103 X 78	3.470	89	4.495	142	2.125	54
078368	MR4035	4 X 3 1/2	103 X 91	3.890	102	4.495	142	2.125	54
078369	MR4020	4 X 2	103 X 53	2.360	60	4.495	142	2.125	54
178122*	MR0705	3/4 X 1/2	21 X 16	0.840	21	1.050	27	0.635	26
178132*	MR1007	1 X 3/4	27 X 21	1.050	27	1.305	33	0.810	21
178133*	MR1210	1 1/4 X 1	35 X 27	1.305	33	1.660	42	1.110	28
178155*	MR1512	1 1/2 X 1 1/4	41 X 35	1.660	42	1.885	48	1.280	56
178156*	MR2012	2 X 1 1/2	53 X 41	1.885	48	2.360	60	1.695	43
178157*	MR2520	2 1/2 X 2	63 X 53	2.360	60	2.900	73	1.750	45

\* Bulk Packed for Pacific Circle